

AHN-12 PURPLE MARTIN HOUSE

CASA MARTIN MORADA | MAISON MARTIN VIOLET

Premium House Assembly

Asamblea de Casa Premium | Assemblage de maison premium



Tool Needed: Phillips Screwdriver
Herramienta necesaria: Destornillador Phillips
Outil nécessaire : tournevis cruciforme

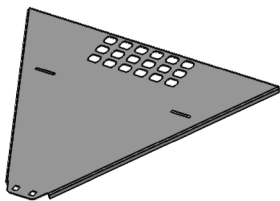
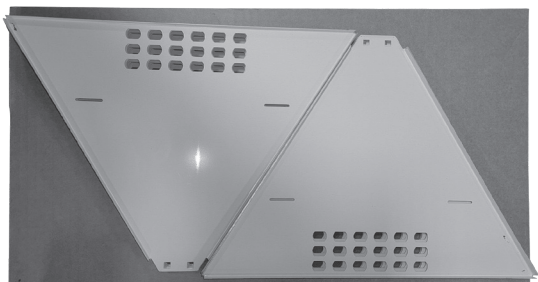


Gloves Recommended
Guantes recomendados
Gants recommandés



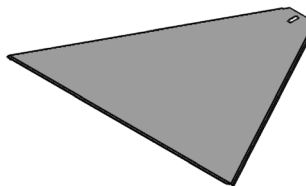
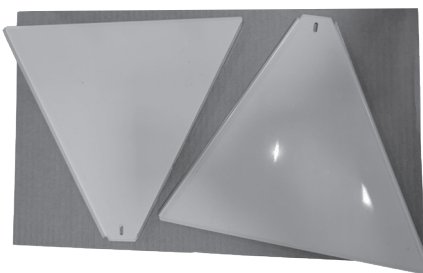
PARTS LIST FROM THE BOX

TOP BOX LAYER



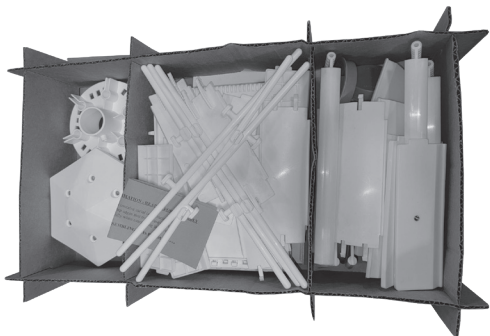
103159 x 12
FLOOR PANEL

SECOND BOX LAYER



103157 x 6
ROOF PANEL

BOTTOM BOX LAYERS



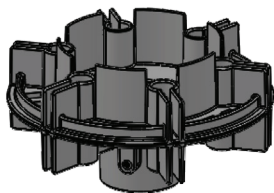
103156 x 12
BACK WALL



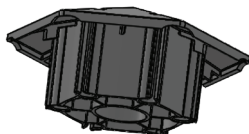
103154 x 12
WALL
INSERT LH



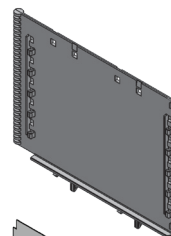
103162 x 12
WALL
INSERT RH



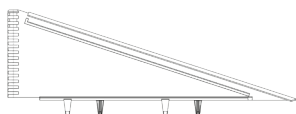
103153 x 3
MANIFOLD



103155 x 1
ROOF CAP



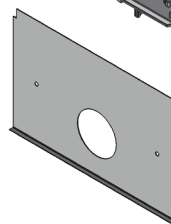
103152 x 12
INNER WALL



103161 x 6
ROOF SUPPORT

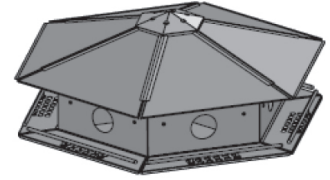
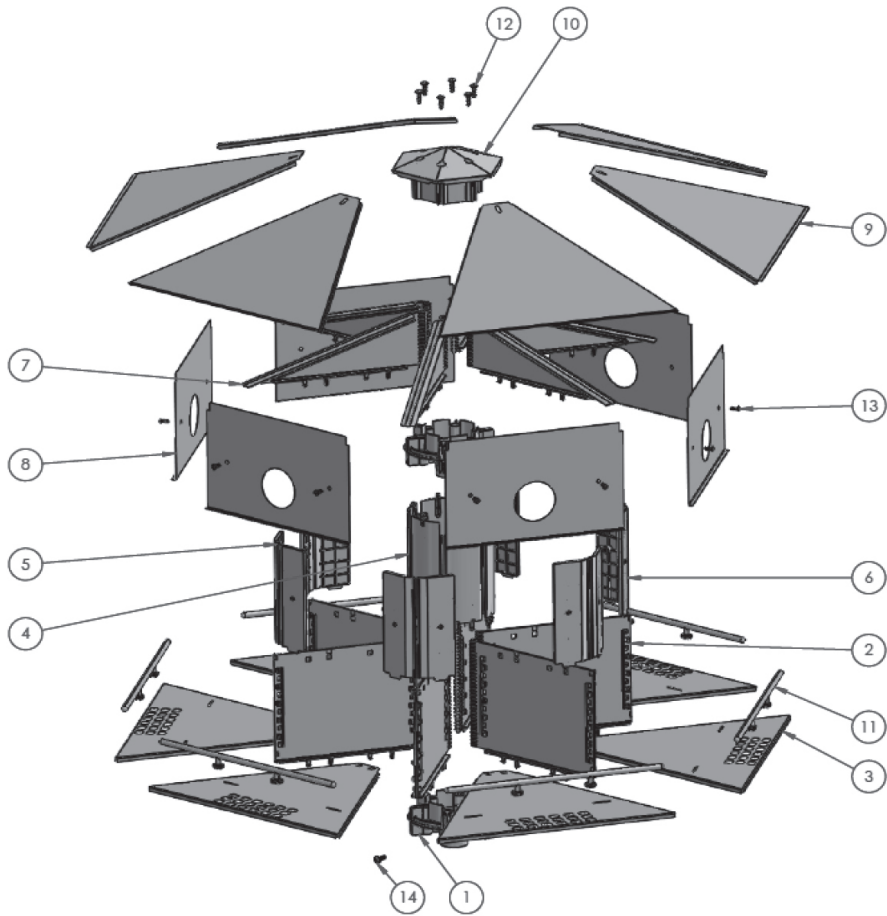


103158 x 12
RAILING

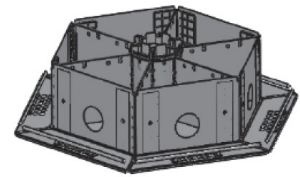
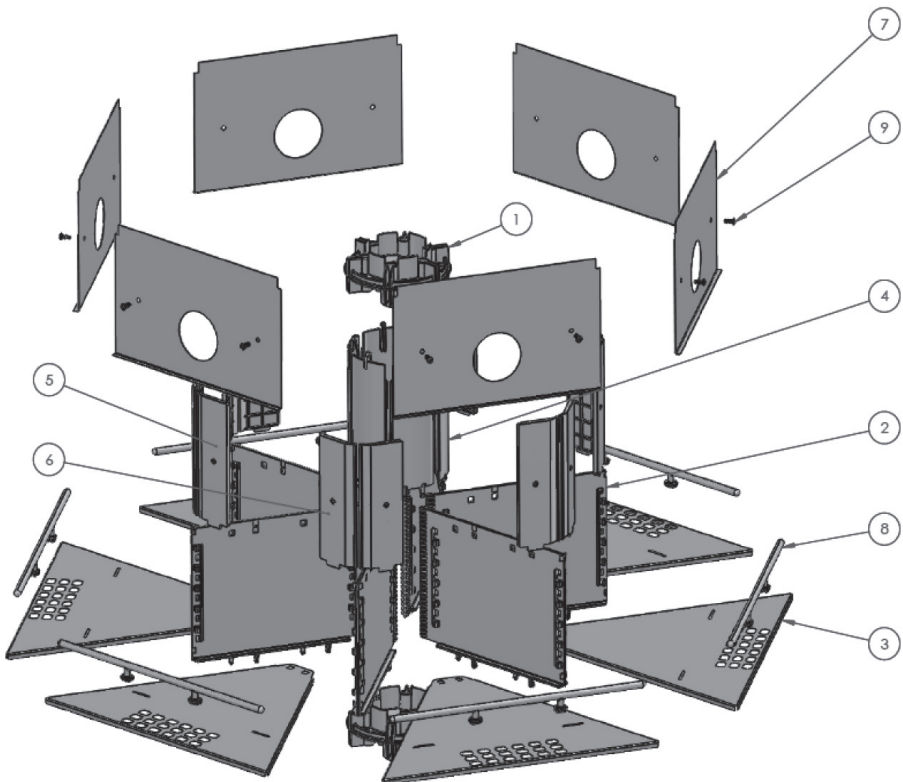


103160 x 12
ROUND
OPENING
PANEL

EXPLODED ASSEMBLY VIEW

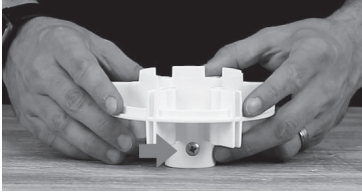


ITEM NO.	PART NUMBER	DESCRIPTION	QTY.
1	103153	MARTIN HOUSE MANIFOLD LOWER	2
2	103152	INNER WALL	6
3	103159	PANEL, FLOOR	6
4	103156	BACK WALL	6
5	103154	WALL INSERT LH	6
6	103162	WALL INSERT RH	6
7	103161	ROOF SUPPORT	6
8	103160	PANEL, DOOR, ROUND OPENING	6
9	103157	PANEL, ROOF	6
10	103155	CAP, ROOF	1
11	103158	RAILING	6
12	016754	PHILLIPS HEAD THREAD FORMING SCREW	6
13	012230-1	M4 X 10mm LG PHILLIPS HEAD BOLT, SS	12
14	014859-1	PHILIPS ROUNDED HEAD SCREW	1



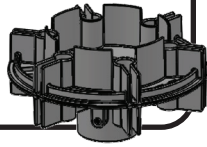
ITEM NO.	PART NUMBER	DESCRIPTION	QTY.
1	103153	MARTIN HOUSE MANIFOLD LOWER	2
2	103152	INNER WALL	6
3	103159	PANEL, FLOOR	6
4	103156	BACK WALL	6
5	103154	WALL INSERT LH	6
6	103162	WALL INSERT RH	6
7	103160	PANEL, DOOR, ROUND OPENING	6
8	103158	RAILING	6
9	012230-1	M4 X 10mm LG PHILLIPS HEAD BOLT, SS	12

1. Set **103153** base down on the table. Screw side should be facing down.



1. Coloque la base **103153** sobre la mesa. El lado del tornillo debe estar hacia abajo.

1. Posez la base **103153** sur la table. Le côté de la vis doit être orienté vers le bas.

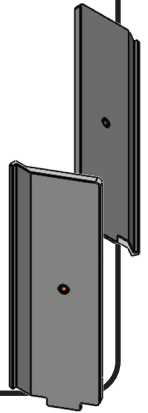


5. Slide **103162** (x6) and **103154** (x6) into the front of **103152**.

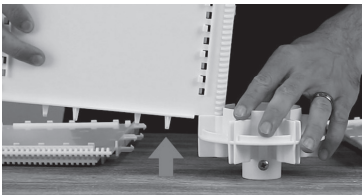


5. Deslice **103162** (x6) y **103154** (x6) en la parte delantera de **103152**.

5. Faites glisser **103162** (x6) et **103154** (x6) à l'avant de **103152**.

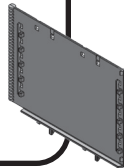


2. Attach **103152** (x6) to the base. Teeth side should be facing down. *Optional: Do Step 2 & 3 together.*



2. Fije **103152** (x6) a la base. El lado de los dientes debe estar hacia abajo. *Opcional: Realice los pasos 2 y 3 juntos.*

2. Fixez **103152** (x6) à la base. Le côté des dents doit être orienté vers le bas. *Facultatif : effectuez les étapes 2 et 3 ensemble.*

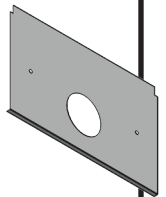


6. Screw **103160** (x6) onto the front of **103162** and **103154** of each side. The curve side should rest on the bottom.

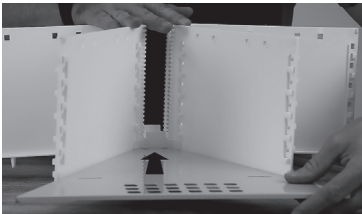


6. Atornille **103160** (x6) en la parte delantera de **103162** y **103154** de cada lado. El lado de la curva debe descansar en la parte inferior.

6. Visser **103160** (x6) à l'avant de **103162** et **103154** de chaque côté. Le côté courbe doit reposer sur le fond.

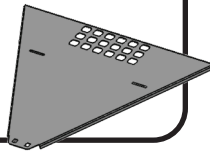


3. Hold **103159** (x6) to the base. In-between **103152**.

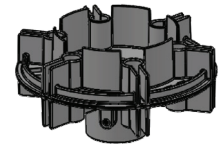


3. Fije **103159** (x6) a la base. Entre **103152**.

3. Fixez **103159** (x6) à la base. Entre **103152**.



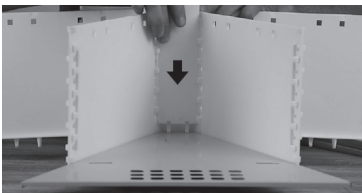
7. Slide **103153** onto the top of the house until it locks in place. Make sure all the teeth lock into place.



7. Deslice **103153** en la parte superior de la casa hasta que encaje en su lugar. Asegúrese de que todos los dientes encajen en su lugar.

7. Faites glisser **103153** sur le dessus de la maison jusqu'à ce qu'il se verrouille en place. Assurez-vous que toutes les dents se verrouillent en place.

4. Slide **103156** (x6) inbetween **103152** and lock it into the base.



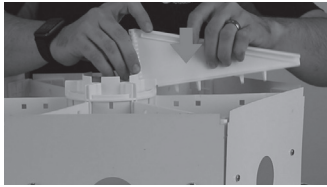
4. Deslice **103156** (x6) entre **103152** y asegúrelo en la base.

4. Faites glisser **103156** (x6) entre **103152** et verrouillez-le dans la base.



**REPEAT STEPS
2-7 TO BUILD THE
SECOND STORY OF
YOUR HOUSE ON
TOP OF THE FIRST
STORY.**

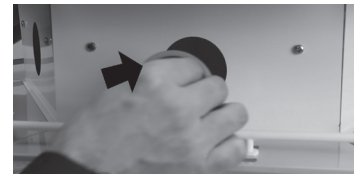
8. Slide **103156** (x6) in-between **103152** and lock it into the base.



8. Deslice **103156** (x6) entre **103152** y asegúrelo en la base.

8. Faites glisser **103156** (x6) entre **103152** et verrouillez-le dans la base.

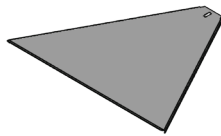
12. (optional) Use green caps to cover house openings when storing the unit during off-season.



12. (opcional) Use tapas verdes para cubrir las aberturas de la casa cuando almacene la unidad fuera de temporada.

12. (facultatif) Utilisez des bouchons verts pour couvrir les ouvertures de la maison lors du stockage de l'appareil hors saison.

9. Slide **103157** (x6) onto the top of the house in-between **103161**. **103157** sides should rest flush in **103161** grooves.

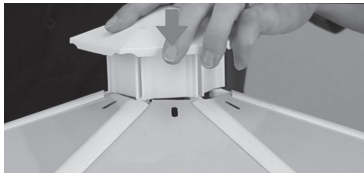


9. Deslice **103157** (x6) en la parte superior de la casa entre **103161**. Los lados de **103157** deben descansar al ras en las ranuras de **103161**.

9. Faites glisser **103157** (x6) sur le dessus de la maison entre **103161**. Les côtés **103157** doivent reposer dans les rainures **103161**.

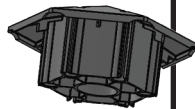


10. Screw **103155** onto the top of the house.



10. Atornille **103155** en la parte superior de la casa.

10. Vissez **103155** sur le dessus de la maison.



11. Snap **103158** (x12) onto the sides of the house in the desired placement.



11. Encaje **103158** (x12) en los costados de la casa en la ubicación deseada.

11. Encliquetez **103158** (x12) sur les côtés de la maison à l'emplacement souhaité.



HEATH[™]

OUTDOOR PRODUCTS

Heath Outdoor Products
140 Mill Street
Coopersville, MI 49404
www.heathoutdoorproducts.com

HW1059 R1122

⚠ **WARNING:** Cancer and Reproductive Harm.

⚠ **ADVERTENCIA:** Cáncer y Daños Reproductivos.

⚠ **AVERTISSEMENT:** Cancer et Dommages Reproductifs.

⚠ www.P65Warnings.ca.gov