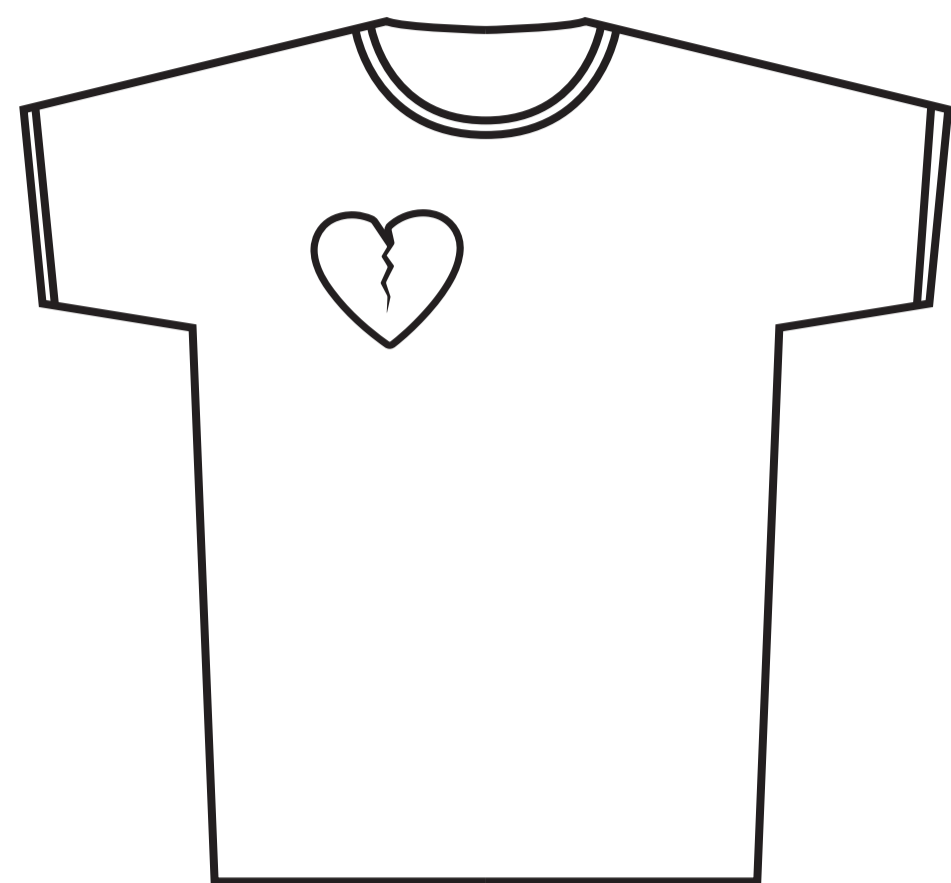
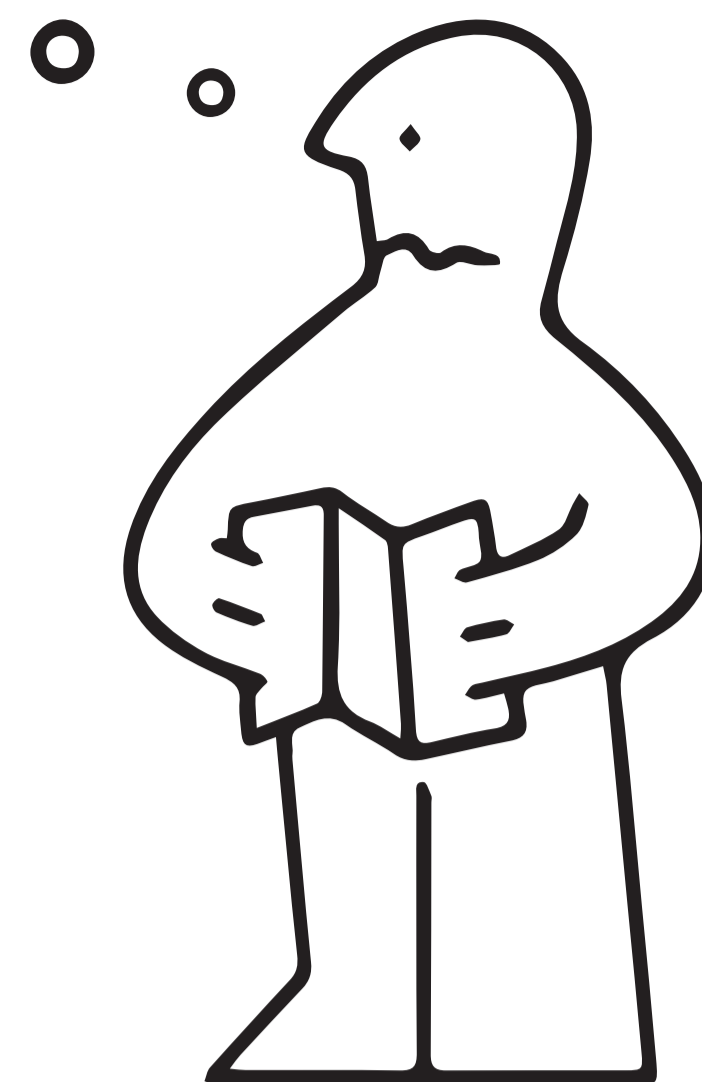
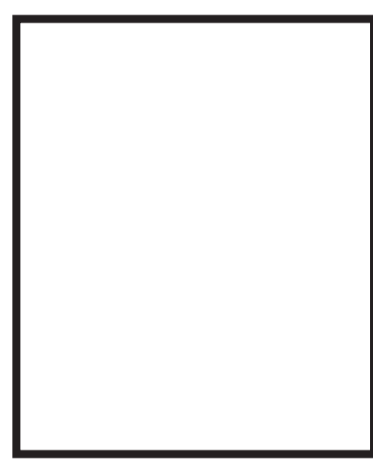


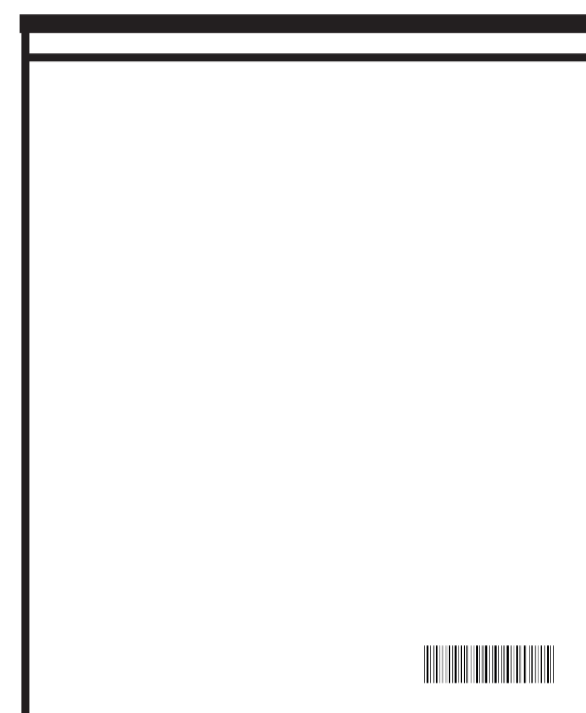
HÖW TÖ FÖLD



1x

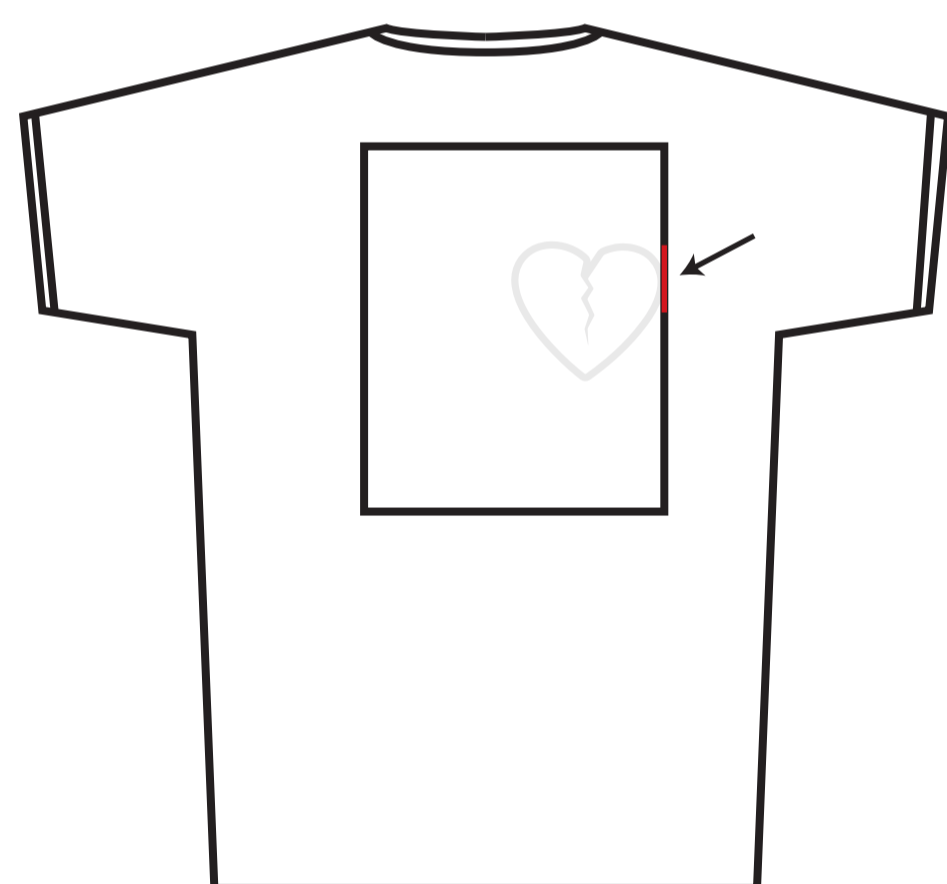


1x
cardboard

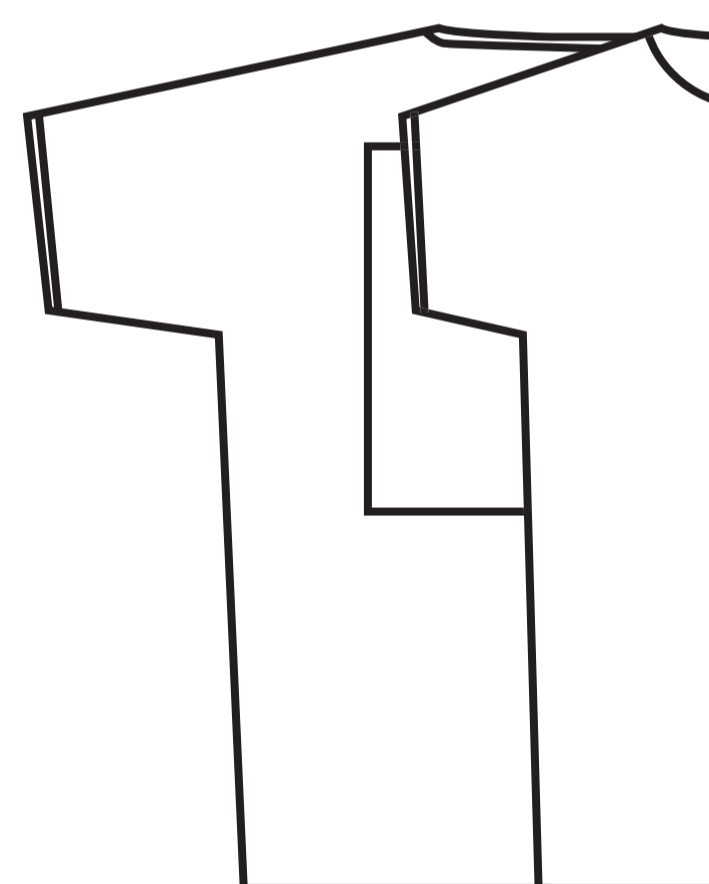


1x
transparent bag

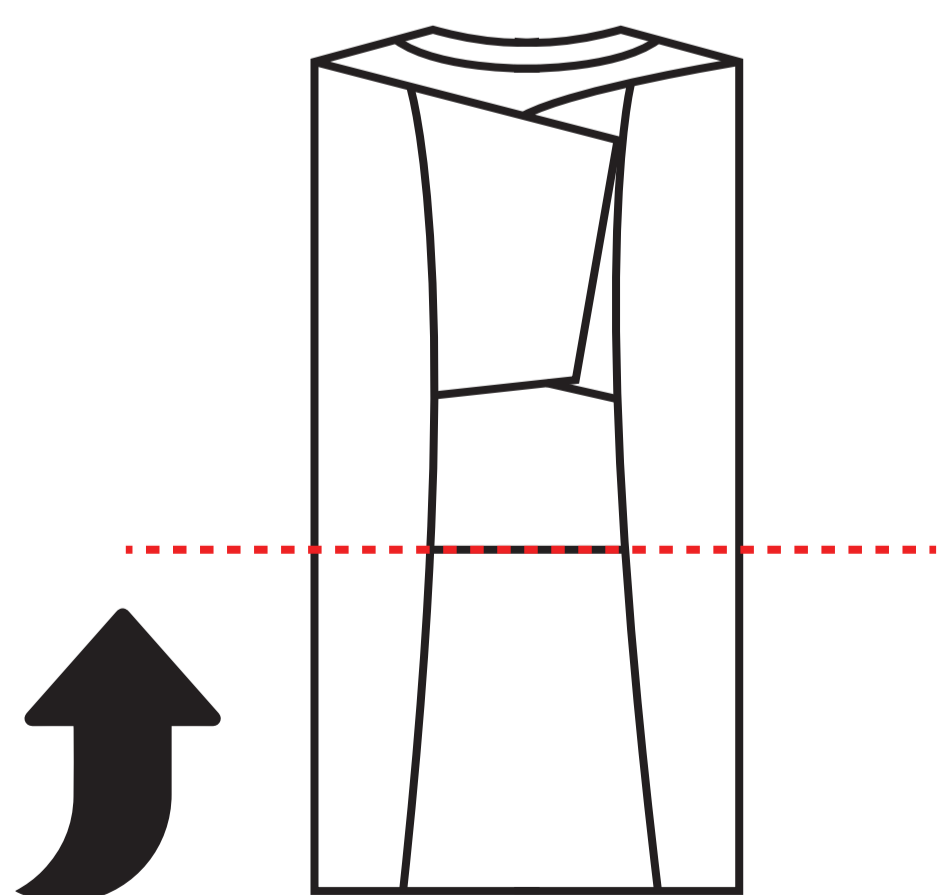
- 1.** Spread the t-shirt on its belly
Put the cardboard on the back
Make sure it's aligned to the heart patch



- 2.** Fold the sleeve where the heart patch is first
Make sure that the heart patch does not fold!



- 3.** Fold the other sleeve the same way
And lastly fold the bottom of the t-shirt up



- 4.** Slide it smoothly in the transparent bag
(The front of the bag is where the barcode is)

