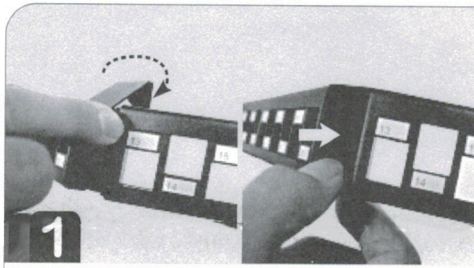


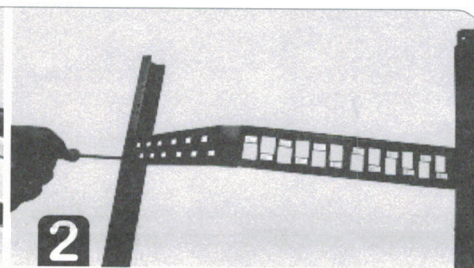
Installation Instructions

V-Shape Angled Patch Panel



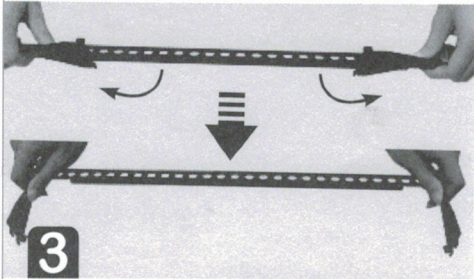
1

Hood the Cap at the front.



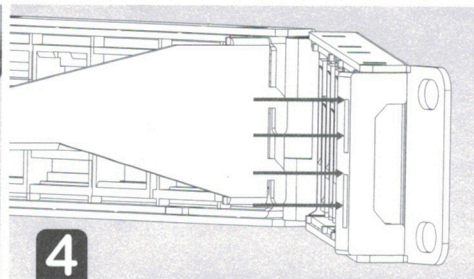
2

Fix the patch panel on the rack.



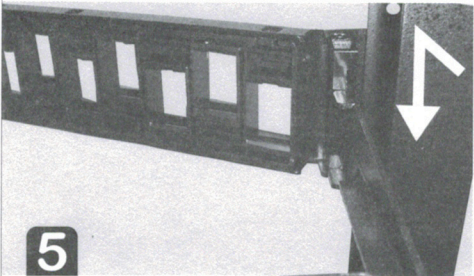
3

Unfold the rear cable manager.



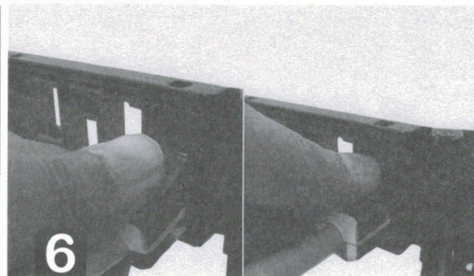
4

Assemble the cable manager to the panel.



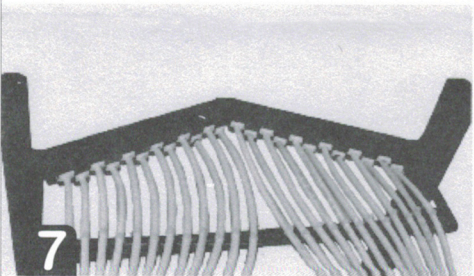
5

Assemble the cable manager to the panel.



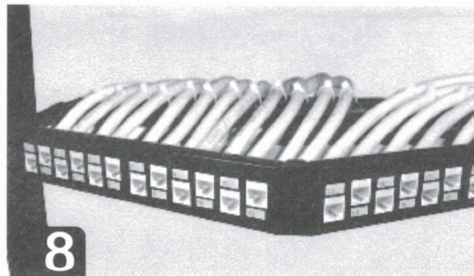
6

Load the keystone to the panel.



7

Use supplied cable ties to tighten each cable.



8

Installation completed!