

## PIVOT FRAME WALL MOUNT RACKS & ACCESSORIES



(Cover and brackets sold separately)

The Pivot Frame Wall Mount Rack makes network equipment installation and maintenance easy for installers. Its pivot feature allows the rackmount frame to swing down and stop at 90 degrees, giving installers full access to the rear of equipment. For installation, 12 rack screws are included with the rack.

To help protect the equipment within the rack, the Pivot Frame Wall Mount Rack Cover was designed as an enclosure for the rack. In order to create a larger racking solution, network installers will often mount multiple Pivot Frame Wall Mount Racks above and/or below each other, and in this case, the cover acts as a separator between each unit.

Install the Pivot Frame Stationary Rackmount Brackets to add an extra U space to the top or bottom of the rack. In some cases, routers, hubs or other non-rack mountable devices are placed on an installed shelf within the rack configuration. When these are positioned within the rack, the devices tend to slide off when the pivot frame is tilted down. Designed with that in mind, the Pivot Frame Stationary Rackmount Brackets allow these devices to be mounted and secured in a fixed position.

Gain full access to all sides of your equipment with the Pivot Frame Wall Mount Rack.

### FEATURES

**Pivot Frame Wall Mount Racks** - Open frame design allows the rack to be installed over existing equipment without having to remove or re-terminate network cables. Its design and the laser knockouts on both sides of the rack also provide numerous locations for routing cabling in and out of the rack.

**Pivot Frame Wall Mount Rack Cover** - Easily slides on to the Pivot Frame Wall Mount Rack, and the rear cut out provides a convenient entrance point for cable routing.

**Pivot Frame Stationary Rackmount Brackets** - Attach the pair of brackets to the Pivot Frame Wall Mount Rack to add an extra U space to the rack. Brackets allow non-rack mountable components to remain in place when the frame is pivoted down.



## 4U PIVOT FRAME WALL MOUNT RACK SPECIFICATIONS



Part Number	1915-3-400-04
Width	21.90"
Depth	12.25"
Height	8.41"
UPC	879447005448
Warranty	Limited Lifetime Warranty
Shipping Method	FedEx Ground

## 8U PIVOT FRAME WALL MOUNT RACK SPECIFICATIONS



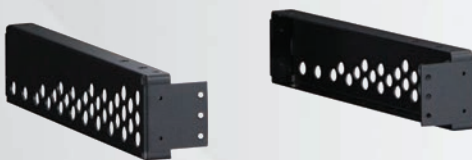
Part Number	1915-3-400-08
Width	21.90"
Depth	12.25"
Height	15.41"
UPC	879447005455
Warranty	Limited Lifetime Warranty
Shipping Method	FedEx Ground

## PIVOT FRAME WALL MOUNT RACK COVER SPECIFICATIONS



Part Number	1915-3-401-00
Width	21.67"
Depth	12.25"
Height	0.32"
UPC	879447005462
Warranty	Limited Lifetime Warranty
Shipping Method	FedEx Ground

## PIVOT FRAME STATIONARY RACKMOUNT BRACKETS SPECIFICATIONS



Part Number	1915-3-402-00
Width	2.04"
Depth	12.25"
Height	2.62"
UPC	879447005479
Warranty	Limited Lifetime Warranty
Shipping Method	FedEx Ground