



# CAT6 600MHz CMR Solid Unshielded Bulk Cable

Category 6 UTP Unshielded 1000' 8 Conductor, Bulk, PVC Jacket, 23AWG Solid-Bare Copper, Pull Box (ETL). Our bulk cable is marked in descending order so you always know how much cable is left.

### Applications

- 10/100/1000Base-T Gigabit Ethernet
- 100Base-VG
- 155 Mbps and 622-Mbps ATM
- 550 MHz Broadband Video, Voice, T1, ISDN
- Other high-performance applications
  - Backbone
  - Floor-to-floor backbone
  - Horizontal cabling to desktop

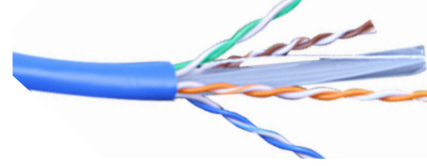
### Compliance

- ANSI/TIA-568.2-D (Category 6)
- REACH
- ETL Verified
- RoHS Compliance for the Requirement of European Union Issued Directive 2002/95/EC

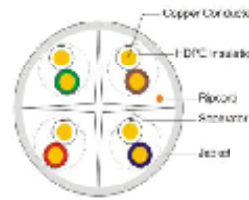
### Physical Characteristics

- Conductor Size: 23AWG
- Conductor Material: Solid Bare Copper
- Insulation Material: High Density Polyethylene
- Insulation Diameter: 0.967mm
- Number of Conductors: 8 Conductors
- Number of Pairs: 4 Pairs
- Outer Shield Material: N/A
- Drain Wire: No
- Outer Jacket Material: CMR PVC (Complies RoHS)
- Outer Jacket Diameter: 5.7mm ± 0.3mm
- Outer Jacket Rip Cord: Yes

## CAT6



### Technical Diagram



### Available Jacket Colors

- Blue Item# C6U-7698RB
- White Item# C6U-7704RW
- Black Item# C6U-7697RK

### Cable Features

- Tested to 600MHz.
- Meets or exceeds CAT6 T568.2-D standards.
- Easy to use pull box with bigger payout.
- Cable is marked in descending order so you always know how much cable is in the box.
- Extra headroom provides room for growth.
- Low attenuation and power-sum crosstalk.

### Construction Facts

- The PVC Cable has high density polyethylene insulation.
- Longitudinal rip cord for easy jacket opening.

### Cable Put-Ups:

- Cable is supplied in 1000ft increments in a pull box.

## CAT6 600MHz Solid Unshielded Bulk Cable Electrical Specifications

| Frequency<br>MHz<br>(Maximum) | ATT<br>dB/100 m<br>(328 ft.)<br>(Maximum) | NEXT<br>dB/100 m<br>(328 ft.)<br>(Minimum) | PS-NEXT<br>dB/100 m<br>(328 ft.)<br>(Minimum) | ACRF<br>dB/100 m<br>(328 ft.)<br>(Minimum) | PS-ACRF<br>dB/100 m<br>(328 ft.)<br>(Minimum) | Return Loss<br>dB<br>(Minimum) | DELAY<br>ns/100 m<br>(328 ft.)<br>(Minimum) |
|-------------------------------|---|--|---|--|---|--------------------------------|---|
| 1                             | 1.9                                       | 65.0                                       | 62.0  | 64.2                                       | 61.2  | 19.1                           | 521.0                                       |
| 4                             | 3.5                                       | 64.1                                       | 61.8  | 52.1                                       | 49.1  | 21.0                           | 504.0                                       |
| 10                            | 5.5                                       | 57.8                                       | 55.5  | 44.2                                       | 41.2  | 21.0                           | 498.0                                       |
| 31.25                         | 10.0                                      | 50.0                                       | 47.5  | 34.3                                       | 31.3  | 18.5                           | 494.0                                       |
| 62.50                         | 14.4                                      | 45.1                                       | 42.7  | 28.3                                       | 25.3  | 17.0                           | 492.0                                       |
| 100                           | 18.6                                      | 41.8                                       | 39.3  | 24.2                                       | 21.2  | 16.0                           | 491.0                                       |
| 200                           | 27.4                                      | 36.9                                       | 34.3  | 18.2                                       | 15.2  | 14.5                           | 490.0                                       |
| 250                           | 31.1                                      | 35.3                                       | 32.7  | 16.2                                       | 13.2  | 10.0                           | 490.0                                       |
| 300                           | 34.6                                      | 34.0                                       | 31.4  | 14.6                                       | 11.6  | 9.2                            | 490.0                                       |
| 400                           | 41.1                                      | 32.0                                       | 29.3  | 12.1                                       | 9.1   | 8.0                            | 490.0                                       |
| 500                           | 47.1                                      | 30.4                                       | 27.6  | 10.2                                       | 7.2   | 7.0                            | 490.0                                       |
| 600                           | 52.7                                      | 29.0                                       | 26.3  | 8.6  | 5.6   | 6.2                            | 489.0                                       |

PrimusCable.com - (951) 824-1571





## CAT6 600MHz CMR Solid Unshielded Bulk Cable

### Pair Color Code Chart

- Pair 1 ----- White/Blue Stripe & Blue
- Pair 2 ----- White/Orange Stripe & Orange
- Pair 3 ----- White/Green Stripe & Green
- Pair 4 ----- White/Brown Stripe & Brown

### Mechanical Characteristics

- Storage Temperature Range: 0 ~ +30°C
- Installation Temperature Range: 0 ~ +50°C
- Operating Temperature Range: -20 ~ +60°C
- Bulk Cable Weight: 30lbs. / 1000FT
- Max. Recommended Pulling Tension: 110N
- Min. Bend Radius/Minor Axis: N/A
- Min. Bend/Installation: N/A
- Test Object: Jacket
- Test Material: PVC
- Before Tensile Strength: ≥13.5
  - Aging Elongation: ≥150
  - Aging Condition: 100°C for 168hrs
- After Tensile Strength: ≥12.5
  - Aging Elongation: ≥125
  - Cold Bend: N/A

### Electrical Characteristics

- Unbalanced to Ground Capacitance Max: 160 pF/100m
- Nominal Velocity of Propagation: N/A
- Maximum Delay: 491.0 @ 100MHz (ns/100m)
- Maximum Delay Skew: ≤ 44 (ns/100m)
- Maximum Conductor DC Resistance: 9.38 (@ 20°C Ω/100m)
- Maximum Operating Voltage: N/A
- Maximum DCR Unbalanced: 2% (@ 20°C)
- Attenuation (Maximum)
  - 31.1dB/100m (328.1ft.) @ 250MHz
  - 52.7dB/100m (328.1ft.) @ 600MHz
- 1.0 - 100MHz Impedance: 100Ω ± 15%
- NEXT (Minimum)
  - 35.3dB/100m (328.1ft.) @ 250MHz
  - 29.0dB/100m (328.1ft.) @ 600MHz
- PS-NEXT (Minimum)
  - 32.7dB/100m (328.1ft.) @ 250MHz
  - 26.3dB/100m (328.1ft.) @ 600MHz
- Return Loss (Minimum)
  - 10.0dB/100m (328.1ft.) @ 250MHz
  - 6.2dB/100m (328.1ft.) @ 600MHz

### Jacket Printing

PRIMUS CABLE UTP 4PR 23AWG CAT6 600MHz CMR ETL VERIFIED TO ANSI/TIA-568.2-D (VID:007) ▲ XXXXFT

Sequential foot markers on jacket.

©2022 CRN Solutions Inc. dba. Primus Cable  
All Rights Reserved.

Although Primus Cable makes every reasonable effort to ensure their accuracy at the time of this publication, information and specifications described herein are subject to error or omission and to change without notice, and the listing of such information and specifications does not ensure product availability.

Primus Cable provides the information and specifications herein on an “AS IS” basis, with no representations or warranties, whether express, statutory or implied. In no event will Primus Cable be liable for any damages (including consequential, indirect, incidental, special, punitive, or exemplary damages) whatsoever, even if Primus Cable has been advised of the possibility of such damages, whether in an action under contract, negligence or any other theory, arising out of or in connection with the use, or inability to use, the information or specifications described herein.

All sales of Primus Cable products are subject to Primus Cable’s standard terms and conditions of sale.

Primus Cable believes this product to be in compliance with EU RoHS (Directive 2002/EC, 27 Jan. 2003). Material manufactured prior to the compliance date may be in stock at Primus Cable facilities and in our Distributor’s inventory. The information provided in this Product Disclosure, and the identification of materials listed as reportable or restricted within the Product Disclosure, is correct to the best of Primus Cable’s knowledge, information, and belief at the date any other operation of the product itself or the one that it becomes a part of. This Product Disclosure is not to be considered a warranty or quality specification and regulations based on their individual usage of the product.

Primus Cable declares this product to be in compliance with EU LVD (Low Voltage Directive 73/23/EEC), as amended by directive 93/68/EEC

[PrimusCable.com](http://PrimusCable.com) - (951) 824-1571

