







Tropicalia 13013

Catherine Martin by Mokum

Status	Active	Composition	100% SD PL	Martindale	75,000 Martindale Cycles
Brand	Catherine Martin by Mokum	Width	136cm / 53.5"	Wyzenbeek	90,000 Wyzenbeek Double Rubs
Collection	Club Tropicalia	Weight	420.0g/m / 384g/yd	Colourfastness	UV 6-7/8 Blue Scale
Country of Origin	Italy	Horizontal Repeat	136cm / 53.5"	Fire Retardancy	AS 1530.3, NFPA 260 - Class 1, CAL 117
Finishes	Teflon Finish	Vertical Repeat	119cm / 46.9"	Environmental	—

Care Instructions

 Do not tumble dry	 Drip dry in shade	 Drycleaning Gentle cycle
 Low iron max 110C	 Machine wash cool gentle cycle	 Use diluted bleach as required

Usage

 Upholstery Heavy Duty	 Accessory
---	---

Attributes

 Fire Retardant	 Outdoor Use	Stain Resistant
--	---	-----------------

Colours



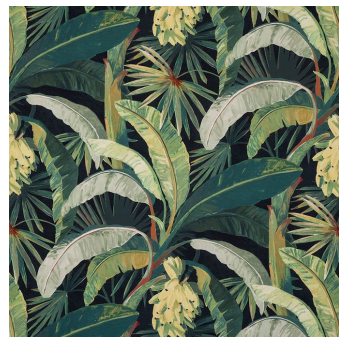
Coral



Silver



Hollywood



Midnight



Porcelain Blue



Sepia

James Dunlop