







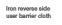
JAMES DUNLOP TEXTILES

Metallique 12394


Catherine Martin by Mokum

Status	Active	Composition	69% PL, 18% CO, 8% PC, 5% LI	Martindale	—
Brand	Catherine Martin by Mokum	Width	140cm / 55.1"	Wyzenbeek	—
Collection	Majorelle	Weight	442.0g/m / 404g/yd	Colourfastness	UV 5/8 Blue Scale
Country of Origin	Germany	Horizontal Repeat	None / None	Fire Retardancy	—
Finishes	'—'	Vertical Repeat	None / None	Environmental	—

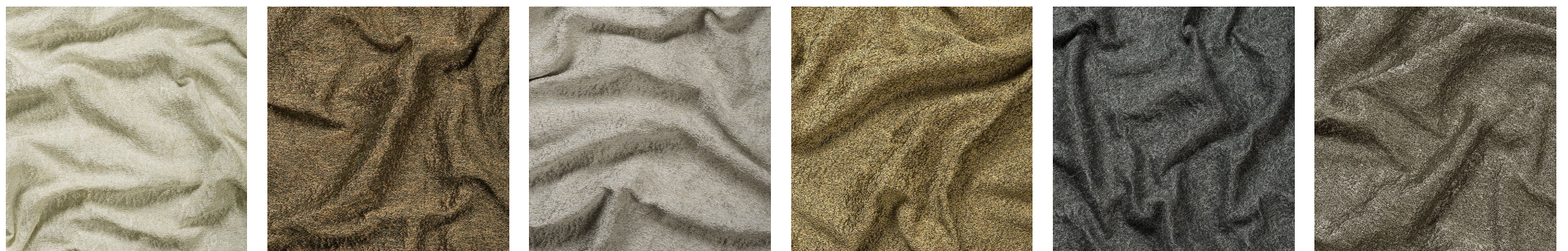
Care Instructions

- | | | |
|--|--|---|
|  Do not bleach |  Do not tumble dry |  Drip dry in shade |
|  Drycleaning Gentle cycle |  Machine wash cool gentle cycle |  Med Iron max 150C |
-  Warning: Iron reverse side use barrier cloth
-

Usage

-  Curtains
-

Colours



Alabaster

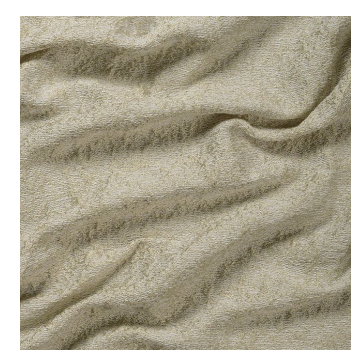
Copper

Diamond

Gold

Obsidian

Pewter



White Gold



Zinc