


JAMES DUNLOP TEXTILES


Hamam 12422


Catherine Martin by Mokum


Status	Active	Composition	74% VI, 26% PL	Martindale	16,000 Martindale Cycles
Brand	Catherine Martin by Mokum	Width	140cm / 55.1"	Wyzenbeek	55,000 Wyzenbeek Double Rubs
Collection	Majorelle	Weight	684.0g/m / 625g/ yd	Colourfastness	UV 6/8 Blue Scale
Country of Origin	Turkey	Horizontal Repeat	9cm / 3.5"	Fire Retardancy	NFPA 260 - Class 1, CAL 117
Finishes	'—'	Vertical Repeat	9cm / 3.5"	Environmental	—


Care Instructions

 Do not bleach

 Do not iron

 Do not tumble dry

 Do not wash


 Drycleaning Gentle cycle

Usage

 Upholstery Medium Duty

 Accessory

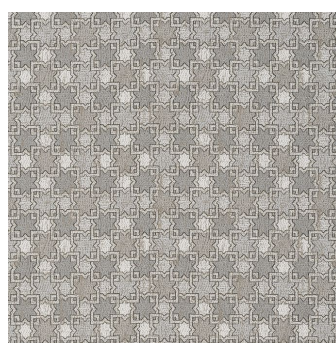
Attributes

 Fire Retardant

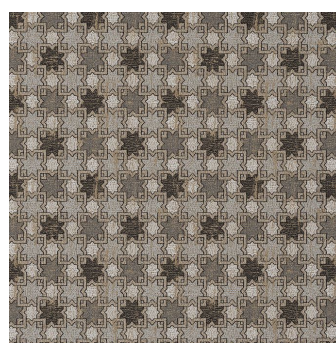
Colours



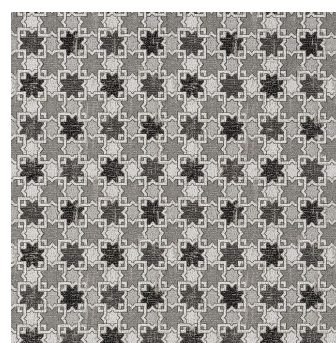
Copper



Marble



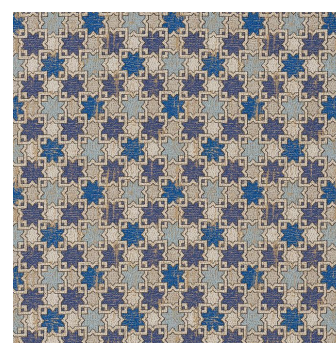
Marcasite



Onyx



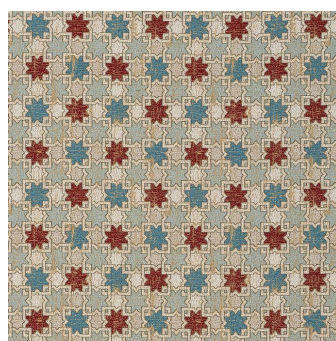
Opal



Sapphire



Teal



Turquoise