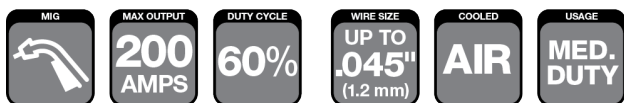


Classic No. Series

Classic® No.2 200 AMP MIG Gun Air-Cooled



WELDING PROCESSES:

MIG (GMAW), Aluminum (GMAW)

Standard Options Include:

- Rear Connector and Knucklehead™ Flexible Conductor Tube
- Standard Conductor Tube – Part No. 62J-60 (Stock No.1620-1301) on all guns up to 15ft (4.6 m)
- Part No. 62J-45 (Stock No. 1620-1300) on all guns over 15ft (4.6 m)
- Conduit Liner – 42 Series

Industry

- Ship and Offshore Yards
- Repair and Maintenance
- Steel Industry
- Industrial and General Fabrication
- Automotive

FEATURES

- **The Industry Standard** for over 40 years
- **Oval-Shaped Handle** reduces grip required to manipulate MIG gun and eases operator fatigue
- **High-Impact Crush-Resistant Handle** uses special plastic composition for long-lasting durability and dependability
- **Heavy Duty Handle** balanced to pivot at center for ease of use in different welding positions
- **Metal Jacketed Three-Layer Conductor Tube Construction** (copper tube/silicon-resin glass insulator/metal jacket) for improved electrical conductivity
- **Trigger Contains Silver Plated Contacts** with self-cleaning action every time it is engaged or disengaged
- **Heavy Duty Design** for dependable industrial applications
- **Field Repairable Cablehoz®** requires no additional connectors
- **Gun Hanger** located at bottom for convenience of resting the gun when not in use
- **Split Handle Case** provides access for easy repairs
- **Improved Performance** with longer life consumables
- **Wide Selection** of front end consumables available
- **Front and Rear Steel Spring Strain Relief** provides support to the Cablehoz coming out of the rear of the handle and minimizes wire feed issues
- **Heavy Duty Contact Tips** in high heat applications offered
- **Interchangeable Front End Consumables** between Tweco® Classic No. and Tweco Spray Master® series

CLASSIC NO.2 200 AMP

SPECIFICATIONS	
Description	Classic No.2 200 Amp
Welding Output CO2 Gas	200 A at 60%
Wire Diameter, Mild Steel	Up To 0.045" (1.2mm)
Wire Diameter, Stainless	Up To 0.045" (1.2mm)
Wire Diameter, Aluminium	Up To 0.045" (1.2mm)
Certification Mark (Standards)	CE IEC 60974-7
Operating Temperature	-10 to +40 °C
Cable Length	10 ft. (3 m), 12 ft. (3.6 m), 15 ft. (4.6 m), and 20 ft. (6.1 m)

Tweco® Style Rear Connector

Adapter kits are available to fit Tweco rear connection to most wire feeders

Wire Size	Length	Part No.	Stock No.
Up To .035" (0.9 mm)	10 ft (3 m)	210-3035	1020-1111
	12 ft (3.6 m)	212-3035	1020-1112
	15 ft (4.6 m)	215-3035	1020-1113
	20 ft (6.1 m)	220-3035	1020-1114
	25 ft (7.6m)	225-3035	1020-1115
Up To .045" (1.2 mm)	10 ft (3 m)	210-4045	1020-1121
	12 ft (3.6 m)	212FN-4045	1020-1322
	15 ft (4.6 m)	215-4045	1020-1123
	15 ft (4.6 m)	215-4045K4**	1020-1660
	25 ft (7.6m)	225-4045	1020-1125

Miller® Style Rear Connector

Wire Size	Length	Part No.	Stock No.
Up To .035" (0.9 mm)	10 ft (3 m)	M210-3035	1020-1130
	12 ft (3.6 m)	M212-3035	1020-1132
	15 ft (4.6 m)	M215-3035	1020-1134
Up To .035" (0.9 mm)	10 ft (3 m)	M210-4045	1020-1131
	12 ft (3.6 m)	M212-4045	1020-1133
	15 ft (4.6 m)	M215-4045	1020-1135
	15 ft (4.6 m)	M215-4045K4**	1020-1661

Euro-Kwik Style Rear Connector

Wire Size	Length	Part No.	Stock No.
Up To .035" (0.9 mm)	10 ft (3 m)	X210-3035	1020-1612
Up To .045" (1.2 mm)	12 ft (3.6 m)	X212-4045	1020-1622
	15 ft (4.6 m)	X215-4045	1020-1623

**Suffix "K4" = Knucklehead Conductor Tube – Part No. 62SFLX4-80 (Stock No. 1620-1106)

Lincoln® Style Rear Connector

Fits Lincoln LN7, 8, 9, SP200

Wire Size	Length	Part No.	Stock No.
Up To .035" (0.9 mm)	10 ft (3 m)	L210-3035	1020-1140
	12 ft (3.6 m)	L212-3035	1020-1142
	15 ft (4.6 m)	L215-3035	1020-1144

Contact Tips – Standard Threaded Style

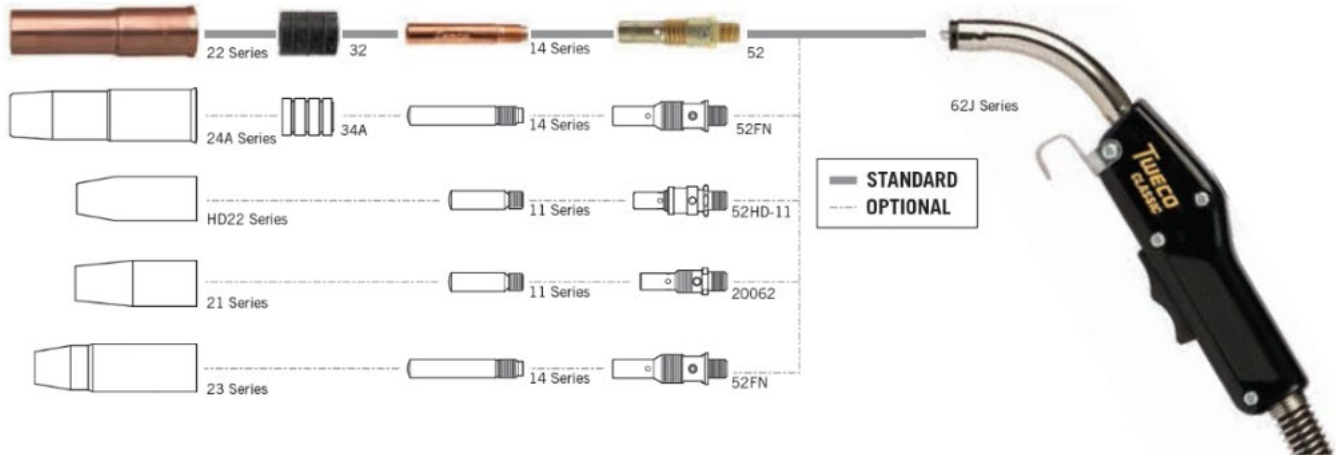
14, 14H & 14T Series

0.25" (6.35 mm) Outside Diameter –
.250-28 UNF Threads - 1.50" (38.1 mm) Overall Length



Wire Size (in / mm)	Tip I.D. (in / mm)	Standard		Heavy Duty		Tapered	
		Part No.	Stock No.	Part No.	Stock No.	Part No.	Stock No.
.023" (0.6 mm)	.031" (0.79 mm)	14-23	1140-1100	NA		14T-23	1140-1300
.030" (0.8 mm)	.038" (0.97 mm)	14-30	1140-1101	NA		14T-30	1140-1301
.035" (0.9 mm)	.044" (1.12 mm)	14-35	1140-1102	14H-35	1140-1202	14T-35	1140-1302
.040" (1.0 mm)	.048" (1.22 mm)	14-40	1140-1103	14H-40	1140-1203	14T-40	1140-1303
.045" (1.2 mm)	.054" (1.37 mm)	14-45	1140-1104	14H-45	1140-1204	11T-45	1140-1304
3/64" AL (1.2 mm)	.064" (1.65 mm)	14-52	1140-1105	14H-52	1140-1205	14T-52	1140-1305
.052" (1.3 mm)	.073" (1.85 mm)	14-116	1140-1106	14H-116	1140-1206	14T-116	1140-1306
1/16" (1.6 mm)	.090" (2.29 mm)	14-564	1140-1109	14H-564	1140-1209	NA	
5/64" (2.0 mm)	.059" (1.50 mm)	14A-364	1140-1113	14AH-364	1140-1213	NA	
1/16" AL (1.6 mm)	.082" (2.08 mm)	NA		14AH-116	1140-1214	NA	

CLASSIC NO.2 200 AMP



Nozzles & Nozzle Insulators – Air-Cooled

22 Series

Formed Nozzle - 0.750" (19.05 mm) Outside Diameter Use with Nozzle Insulator
Part No. 32 (Stock No. 1320-1100). 2 per pack



Nozzle Style	Bore Diameter	Part No.	Stock No.	Nozzle Design	Nozzle/Contact Tip Relationship
Slip-On	3/8" (9.5 mm)	22-37SS	1220-1101	Standard Short Stop	1/16" (1.6mm) – 1/4" (6.4mm) Recess, No Projection
	3/8" (9.5 mm)	22T-37SS	1220-1301	Standard Short Stop	1/16" (1.6mm) – 1/4" (6.4mm) Recess, No Projection
	1/2" (12.7 mm)	22-50	1220-1110	Standard	3/32" (2.4mm) Projection, 1/4" (6.4mm) Recess
	1/2" (12.7 mm)	22-50SS	1220-1111	Standard Short Stop	1/16" (1.6mm) – 1/4" (6.4mm) Recess, No Projection
	5/8" (15.9 mm)	22-62	1220-1120	Standard	3/32" (2.4mm) Projection, 1/4" (6.4mm) Recess
	5/8" (15.9 mm)	22-62SS	1220-1121	Standard Short Stop	1/16" (1.6mm) – 1/4" (6.4mm) Recess, No Projection

Conductor Tubes – Air-Cooled

Classic No. 2

Description	Part No.	Stock No.	Outer Jacket Material	Back End Threads	Front End Threads
60 Degree with 3" (76.2 mm) Radius	62J-60	1620-1301	Metal	I.D. 3/8"-24UNF-2B	I.D. 3/8"-24UNF-2B O.D. 9/16"-18 UNF-2A
60 Degree with 2" (50.5 mm) Radius	62A-60	1620-1102	Fiber	I.D. 3/8"-24UNF-2B	I.D. 3/8"-24UNF-2B O.D. 9/16"-18 UNF-2A

Conduit Liners – For Use With Steel Welding Wires

180-250 Amp – Steel Wound

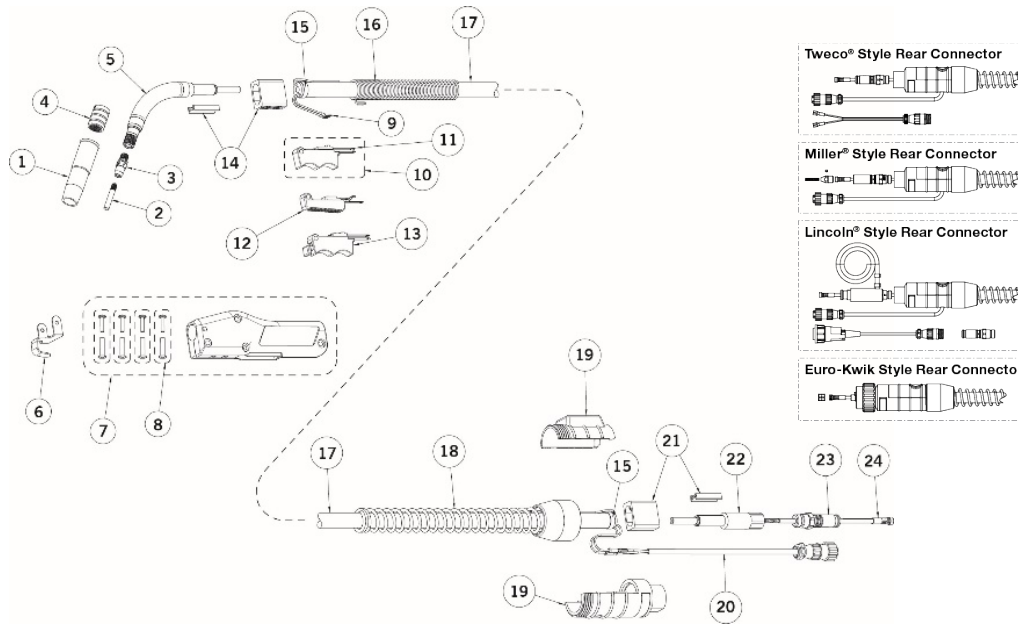
Wire Size	Length	Part No.	Stock No.
.030" - .035" (0.8 - 0.9 mm)	15 ft (4.6 m)	42-3035-15	1420-1113
.030" - .035" (0.8 - 0.9 mm)	25 ft (7.6 m)	42-3035-25	1420-1115
.040" - .045" (1.0 - 1.2 mm)	15 ft (4.6 m)	42-4045-15	1420-1123
.040" - .045" (1.0 - 1.2 mm)	25 ft (7.6 m)	42-4045-25	1420-1125
.052" - 1/16" (1.3 - 1.6 mm)	15 ft (4.6 m)	42-116-15	1420-1124

Conduit Liners – For Use With Aluminium Welding Wires

180-250 Amp – Teflon

Wire Size	Length	Part No.	Stock No.
.030" - 3/64" (0.8 - 1.2 mm)	15 ft (4.6 m)	42N-3545-15	1420-1003

Replacement Parts



#	Description	Classic No. 2
		Part No./ Stock No.
1	Nozzle	Refer to Page 3
2	Contact Tip	Refer to Page 2
3	Diffuser	52 1520-1101
4	Nozzle Insulator	32 1320-1100
5	Conductor Tube	Refer to Page 3
6	Gun Hanger	152 2020-2152
7	Handle (Standard)	83RC 2030-2084
	Handle (Dual Schedule)	--
8	Binder Posts & Screws	122FM 2020-2122
9	Trigger Control Wire Terminal (Standard - 2 ea.)	244 2040-2224
	Trigger Control Wire Terminal (Dual Schedule - 4 ea.)	--
10	Trigger Assembly (Standard)	92RR 2020-2093
11	Trigger Blades	94RC 2040-2100
12	Trigger Assembly (Dual Schedule)	--
13	Trigger Assembly (Locking)	--
14	Front Cable Connector	102 2020-2102

#	Description	Classic No. 2
		Part No./ Stock No.
15	Cable Clamp	136 2060-2690
16	Front Strain Relief Spring	142-6-SPR 2020-2144
17	Cablehoz®	200 1720-2100
18	Rear Strain Relief Spring	235RSSR 2060-2035
19	Rear Case (Direct Plug)	R6RC 2060-2040
	Rear Case (Euro)	X6RC 2060-2006
20	Control Wire (Standard)	MS354-DSM 2060-2140
	Control Wire (Dual Schedule)	194DS 2040-2195
21	Rear Cable Connector (Direct Plug)	104 2040-2104
	Rear Cable Connector (Euro)	172X-M 2020-2181
22	Adapter (Direct Plug)	M170-2H 2020-2165
NS	Repair/Conversion Kits	83R-CK 2030-2085
23	Connector Plug	--
24	Conduit Assembly	Refer to Page 3
NS	Protective Cable Wrap, 50 ft (15.2 m) per box	TCR50 9900-1150



ESAB / esab.com

