

# G30 Welding Helmet

## Flip front welding and grinding helmet



*G30 Closed*

The G30 is a unique design in flip front welding and grinding helmets. The visor provides effective protection from UV and IR radiation when the visor is both open and closed, and is available in different shade levels. The helmet is equipped with a strong and comfortable head gear.

- Changeable inner and outer lens
- Lightweight shell
- Large inner grinding visor
- Comfortable headgear

Visit [esab.com](http://esab.com) for more information.

### Process

- SMAW/MMA (Stick)
- GMAW (MIG/MAG)
- GTAW (TIG)
- Grinding
- Oxy Fuel Cutting
- Plasma Cutting
- PAW - Plasma Arc Welding



*Large inner grinding visor.*



*G30 Front Closed*

# G30 Welding Helmet

## Specifications

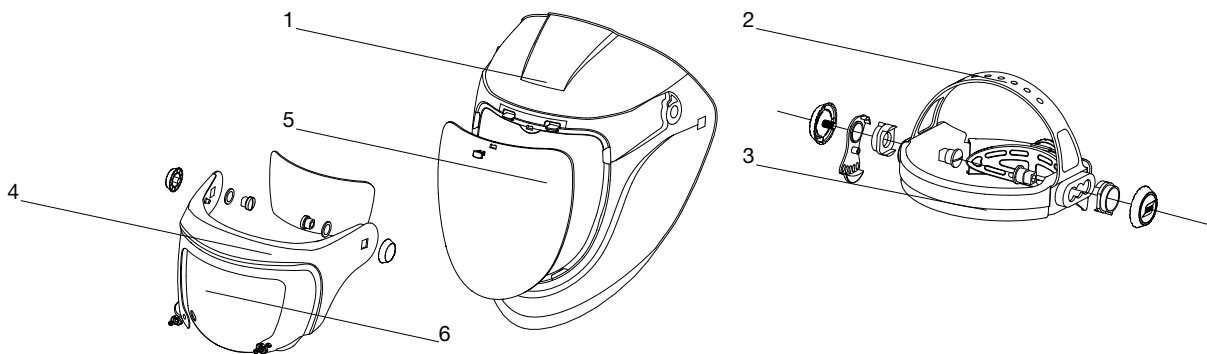
Viewing Area	6.1 x 6.7 in. (155 x 170 mm) large visor
Large Inner Lens Shade Options	Clear, Shade 2, Shade 3, Shade 5
Outer Flip Visor Shade Options	Shade 5, Shade 8, Shade 10
Standards	CE, ANSI, CSA, ASNZS
Weight	1.2 lbs. (570 g)

## Ordering Information

Description	Part Number
G30 Shade 10	0700000430
G30 Shade 11	0700000431

## Wear & Spare Parts

Description	Part Number
1 Main Shell G30, G40, G50	0700000515
2 Headgear	0700000415
3 Sweat Band	0700000414
4 Flip Up Frame G30 including screws	0700000508
5 Large Inner Visor G30, G40, G50 - Clear	0700000501
5 Large Inner Visor G30 Shade 2	0700000502
5 Large Inner Visor G30 Shade 3	0700000503
5 Large Inner Visor G30 Shade 5	0700000504
6 Outer Flip Visor G30 Shade 5	0700000505
6 Outer Flip Visor G30 Shade 8	0700000506
6 Outer Flip Visor G30 Shade 10	0700000507



ESAB / [esab.com](http://esab.com)

