



VELOCITY2 SPRAY MASTER® MIG GUN SERIES

FEATURES

- **VELOCITY2 CONSUMABLES**
with new ground-breaking innovation inspired by welders for welders
- **SOLID COPPER CONDUCTOR PATH** with fewer connections for optimized electrical surface contact
- **FEWER CONSUMABLE PARTS**
mean less complexity and lower cost of ownership
- **GAS PORTED VELOCITY2 CONTACT TIPS** stay cooler and last longer
- **EXTENDED LENGTH TRIGGER** allows welders to adjust their grip for access, comfort and to avoid radiated heat
- **EASY TO USE VELOCITY2 TIPS** eliminates threads and requires no tools
- **TIPS CAN BE ROTATED** to prolong life requiring fewer changes
- **EXCELLENT WIRE FEEDABILITY**
with centered liner
- **SUPERIOR WELDING PERFORMANCE**
from a smoother, more stable arc
- **COMPACT, ERGONOMIC HANDLE DESIGN** is balanced to pivot at the center of the handle for ease of use, thereby reducing operator fatigue
- **FRONT AND REAR STEEL SPRING STRAIN RELIEF** provides support to the Cablehoz® coming out of the rear of the handle and minimizes wire feed issues
- **SPLIT HANDLE CASE** provides access for ease of repairs in the field
- **DURABLE, METAL-JACKETED, FOUR-LAYER CONDUCTOR TUBE** rotates easily for different welding positions and lowers heat in the front end
- **CRIMPED FRONT CABLEHOZ CONNECTION** for improved electrical conductivity
- **DESIGNED FOR SPRAY AND PULSE TRANSFER MODES**, maintains the copper needed for high duty cycle welding

VELOCITY2
SPRAY MASTER
MIG GUN SERIES

VELOCITY2 SPRAY MASTER® MIG GUN SERIES



VELOCITY2 SPRAY MASTER® MIG GUN SERIES

80% Duty Cycle—Mixed Gases
Suitable for Heavy Duty Fabrication,



THE BEST JUST GETS BETTER, ALL WITHOUT CHANGING OUR TIME-TESTED PROVEN COMPONENTS.

The Spray Master MIG Gun receives VELOCITY2 Medium and Heavy Duty consumables to create a new line of MIG guns, the VELOCITY2 Spray Master series. VELOCITY2 Spray Master series maintains the features that made the original Spray Master legendary:

- **COMPACT ERGONOMIC HANDLE DESIGN** is preferred by many for comfort and maneuverability while reducing operator fatigue.
- **EXTENDED LENGTH TRIGGER** allows welders to adjust and reposition their grip for access, comfort and to avoid radiated heat. Adjusting your grip helps avoid repetitive motion, thus reducing fatigue.
- **FULLY ROTATABLE CONDUCTOR TUBE** allows welders further options to reconfigure the MIG Gun form factor to solve access issues, improve maneuverability, as well as reducing fatigue and adjusting for comfort.
- **THICK-WALLED, FOUR-LAYER CONDUCTOR TUBE** is designed for heavy duty cycle applications. The outer layer is made from a high temperature silicone tube decreasing the effect of radiant heat to the MIG gun.
- **MAINTAINS THE ORIGINAL TWECO CABLEHOZ** in 250, 350, and 450 Amp versions that provide the required electrical and thermal conductivity along with cable flexibility that is best in class.

VELOCITY2 Spray Master series is outfitted with VELOCITY2 a revolutionary new approach in MIG consumables that will change the game in terms of welder productivity. VELOCITY2 was designed by welders for welders. For more detailed information on VELOCITY2 Medium and Heavy Duty consumables, visit Tweco.com

SPEED MADE EASY.

Small Ergonomic Handle
Reduces Operator Fatigue

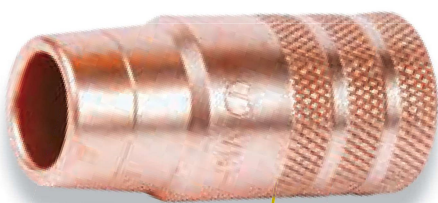
Found on all 250 & 350 amp VELOCITY2 Spray Master Mig Guns Supports Cablehoz®

Cablehoz®
Properly Sized for 80% Duty Cycle in 250, 350, and 450 Amp versions

You can upgrade any standard Spray Master MIG guns by replacing the conductor tube to the next generation VELOCITY2 platform.

NEXT GENERATION TWECO® VELOCITY2 MIG WELDING CONSUMABLES

Patented



Nozzle Assembly
Heavy Duty Copper Nozzle with over molded brass insert that is keyed/ crimped in place making this the most robust nozzle on the market



Contact Tip
with Gas Ports



Conduit Liner
Perfectly Centered inside Tip

Conductor Tube
Fully Insulated

- **YOU SPOKE, WE LISTENED**—Inspired by Welders
- **COST SAVINGS WITH FEWER TIPS**—VELOCITY2 Lasts Longer
- **EASY TO USE**—No More Threads, No Tools
- **SMOOTHER ARC**—Improves Stability and Welding Performance
- **NO DIFFUSER**—Less Complexity, Lower Inventory Costs

SPEED MADE EASY.

All of the features of VELOCITY2 result in more convenience and higher productivity for the welder.

VELOCITY2 Conductor Tubes fit Tweco® Spray Master® V250, V350 & V450 MIG Guns.

CLICK IT AND GO—
EASY TO ADJUST SLIP NOZZLE.



Adjustable Slip Nozzle



Recessed



Flush



Protruding

One of the VELOCITY2 consumable offerings is the Adjustable Slip Nozzle that provides positive indexing to all positions whether you require recessed, flush or protruding tips.



Velocity Nozzle Identification

S=Small
M=Medium
H=Heavy
ET=Extended Taper

Blank=Fixed Threaded
S=Adjustable Slip

V N S 5 0 F S

Velocity Nozzle Orifice Opening Size: Blank=Standard Recess

37=3/8" 62=5/8" F=Flush

50=1/2" 75=3/4" 2PC=Two Piece

R=Recess 1/4" (6.35 mm)

FAS=Spot Weld

FC=Flux Core

Velocity Contact Tip Identification

S=Small
M=Medium
H=Heavy
ET=Extended Taper

A=Aluminum
Blank=Other

V T S A 3 0

Velocity Tip Wire Size:

364=3/64" 116=1/16"

23=0.023" 564=5/64"

30=0.030" 332=3/32"

35=0.035" 40=0.040" 764=7/64"

45=0.045" 18=1/8"

*Reference your MIG gun Operator's Manual for details.

SPRAY MASTER® V250 AMP MIG GUN

MIG FLUX CORED	MAX OUTPUT 250 AMPS	DUTY CYCLE 80%	WIRE SIZE UP TO .045" (1.2 mm)	COOLED AIR	USAGE MED. DUTY
----------------	----------------------------------	--------------------------	---	----------------------	---------------------------



80% Duty Cycle—Mixed Gases
Suitable for Light/Medium Duty Fabrication.

WELDING PROCESSES:

MIG (GMAW), Flux Cored (FCAW), Aluminum (GMAW)

Standard Options Include:

- Rear Connector and Knucklehead™ Flexible Conductor Tube
- Standard Conductor Tube—SMVCTLS60 (Stock No. 1240-1377) on all guns up to 15ft (4.6 m)
- SMVCTLS45 (Stock No. 1240-1376) on all guns over 15ft (4.6 m)
- Conduit Liner—42 Series

Tweco® Style Rear Connector

Adapter kits are available to fit Tweco rear connection to most wire feeders

WIRE SIZE	LENGTH	PART NO.	STOCK NO.
Up To .045" (1.2 mm)	10 ft (3 m)	SMV210-3545	1023-1290
	12 ft (3.6 m)	SMV212-3545	1023-1276
	15 ft (4.6 m)	SMV215-3545	1023-1277
	20 ft (6.1 m)	SMV220-3545	1023-1278
	25 ft (7.6 m)	SMV225-3545	1023-1279

Miller® Style Rear Connector

WIRE SIZE	LENGTH	PART NO.	STOCK NO.
Up To .045" (1.2 mm)	10 ft (3 m)	SMV210M-3545	1023-1280
	12 ft (3.6 m)	SMV212M-3545	1023-1281
	15 ft (4.6 m)	SMV215M-3545	1023-1282
	20 ft (6.1 m)	SMV220M-3545	1023-1283
	25 ft (7.6 m)	SMV225M-3545	1023-1289

Lincoln® Style Rear Connector

Fits Lincoln LN7, 8, 9, SP200

WIRE SIZE	LENGTH	PART NO.	STOCK NO.
Up To .045" (1.2 mm)	10 ft (3 m)	SMV210L-3545	1023-1292
	12 ft (3.6 m)	SMV212L-3545	1023-1285
	15 ft (4.6 m)	SMV215L-3545	1023-1293
	20 ft (6.1 m)	SMV220L-3545	1023-1294
	25 ft (7.6 m)	SMV225L-3545	1023-1295

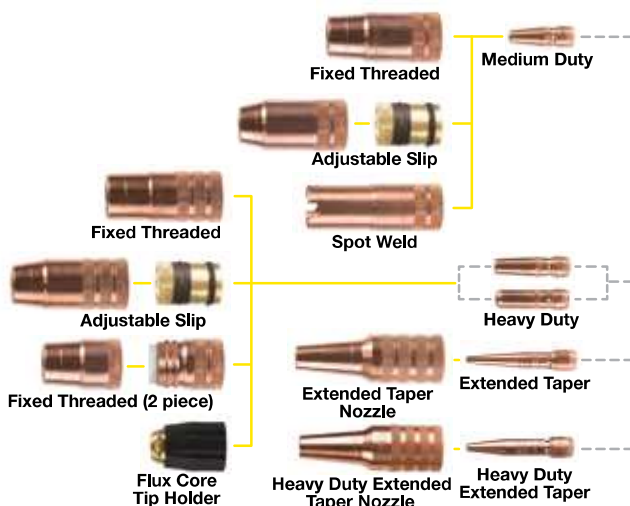
Some Lincoln wire feeders are assembled with their K1500-2 gun receiving bushing that will accept Tweco Style MIG Guns direct from the factory. Control wire Part No. MS354-DSLJ (Stock No. 2060-2137) must be ordered separately.

Euro-Kwik Style Rear Connector

WIRE SIZE	LENGTH	PART NO.	STOCK N
Up To .045" (1.2 mm)	10 ft (3 m)	SMV210X-3545	1023-1286
	12 ft (3.6 m)	SMV212X-3545	1023-1287
	15 ft (4.6 m)	SMV215X-3545	1023-1288
	20 ft (6.1 m)	SMV220X-3545	1023-1291
	25 ft (7.6 m)	SMV225X-3545	1023-1284

Knucklehead Conductor Tube Part No. VCTL64SFLX480 (Stock No. 1640-1337)
Part No. VCTL64SFLX360 (Stock No. 1640-1336)

Long Reach Conductor Tube Part No. SMVCTLS60LM (Stock No. 1640-1403)
Part No. SMVCTLS45LM (Stock No. 1640-1402)



RATED OUTPUT			WIRE SIZE	COOLED	APPLICATION USAGE
Amps	Duty Cycle	Gas			
250 Amps	80%	Mixed	Up To .045" (1.2 mm)	Air	Light/Medium Duty Fabrication

EASY FIND
EASY FIND GUIDE
See Page 24 & 25 for Replacement Parts & Optional Accessories

Miller is a registered trademark of Illinois Tool Works, Inc. Lincoln is a registered trademark of Lincoln Electric Co. The aforementioned registered trademarks are in no way affiliated with Tweco. Tweco is registered trademark of ESAB.

SPRAY MASTER® V350 AMP MIG GUN



80% Duty Cycle—Mixed Gases
Suitable for Medium/Heavy Duty Fabrication.

MIG/FLUX CORED	MAX OUTPUT 350 AMPS	DUTY CYCLE 80%	WIRE SIZE UP TO 1/16" (1.6 mm)	COOLED AIR	USAGE MED. DUTY
----------------	----------------------------------	--------------------------	--	----------------------	---------------------------

WELDING PROCESSES:

MIG (GMAW), Flux Cored (FCAW), Aluminum (GMAW)

Standard Options Include:

- Dual Schedule On/Off Control, Rear Connector and Knucklehead™ Flexible Conductor Tube
- Standard Conductor Tube—SMVCTLS60 (Stock No. 1240-1377) on all guns up to 15ft (4.6 m)
- SMVCTLS45 (Stock No. 1240-1376) on all guns over 15ft (4.6 m)
- Conduit Liner—44 Series

Tweco® Style Rear Connector

Adapter kits are available to fit Tweco rear connection to most wire feeders

WIRE SIZE	LENGTH	PART NO.	STOCK NO.
Up To 1/16" (1.6 mm)	10 ft (3 m)	SMV310-116	1036-1750
	12 ft (3.6 m)	SMV312-116	1036-1752
	15 ft (4.6 m)	SMV315-116	1036-1756
	15 ft (4.6 m)	SMV315-116DSRS	1036-1783
	15 ft (4.6 m)	SMV315-116K4	1036-1759
	20 ft (6.1 m)	SMV320-116	1036-1789
	25 ft (7.6 m)	SMV325-116	1036-1787

Lincoln® Style Rear Connector

Fits Lincoln LN7, 8, 9, SP200

WIRE SIZE	LENGTH	PART NO.	STOCK NO.
Up To 1/16" (1.6 mm)	10 ft (3 m)	SMV310L-116	1036-1785
	12 ft (3.6 m)	SMV312L-116	1036-1753
	15 ft (4.6 m)	SMV315L-116	1036-1762
	15 ft (4.6 m)	SMV315L-116DSRS	1036-1788
	15 ft (4.6 m)	SMV315L-116K4	1036-1764
	20 ft (6.1 m)	SMV320L-116	1036-1781
	25 ft (7.6 m)	SMV325L-116	1036-1786

Some Lincoln wire feeders are assembled with their K1500-2 gun receiving bushing that will accept Tweco Style MIG Guns direct from the factory. Control wire Part No. MS354-DSLJ (Stock No. 2060-2137) must be ordered separately.

Miller® Style Rear Connector

WIRE SIZE	LENGTH	PART NO.	STOCK NO.
Up To 1/16" (1.6 mm)	10 ft (3 m)	SMV310M-116	1036-1751
	12 ft (3.6 m)	SMV312M-116	1036-1754
	15 ft (4.6 m)	SMV315M-116	1036-1765
	15 ft (4.6 m)	SMV315M-116K4	1036-1768
	15 ft (4.6 m)	SMV315M-332K4	1036-1791
	15 ft (4.6 m)	SMV315M-116CT180	1036-1777
	20 ft (6.1 m)	SMV320M-116	1036-1780
	25 ft (7.6 m)	SMV325M-116CT180	1036-1778
	25 ft (7.6 m)	SMV325M-116	1036-1775

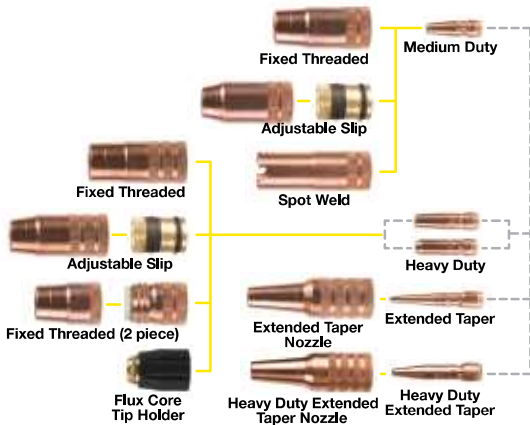
Euro-Kwik Style Rear Connector

WIRE SIZE	LENGTH	PART NO.	STOCK NO.
Up To 1/16" (1.6 mm)	10 ft (3 m)	SMV310X-116	1036-1784
	12 ft (3.6 m)	SMV312X-116	1036-1779
	15 ft (4.6 m)	SMV315X-116	1036-1770
	20 ft (6.1 m)	SMV320X-116	1036-1782
	25 ft (7.6 m)	SMV325X-116	1036-1790

"DSRS" = Dual Schedule Rocker Switch; "K4" = Knucklehead Conductor Tube

Knucklehead Conductor Tube Part No. VCTL64SFLX480 (Stock No. 1640-1337)
Part No. VCTL64SFLX360 (Stock No. 1640-1336)

Long Reach Conductor Tube Part No. SMVCTLS60LM (Stock No. 1640-1403)
Part No. SMVCTLS45LM (Stock No. 1640-1402)



RATED OUTPUT			WIRE SIZE	COOLED	APPLICATION USAGE
Amps	Duty Cycle	Gas			
350 Amps	80%	Mixed	Up To 1/16" (1.6 mm)	Air	Medium/Heavy Duty Fabrication

EASY FIND
EASY FIND GUIDE
See Page 24 & 25 for Replacement Parts & Optional Accessories

Miller is a registered trademark of Illinois Tool Works, Inc. Lincoln is a registered trademark of Lincoln Electric Co. The aforementioned registered trademarks are in no way affiliated with Tweco. Tweco is registered trademark of ESAB.

SPRAY MASTER® V450 AMP MIG GUN



80% Duty Cycle—Mixed Gases
Suitable for Heavy Duty Fabrication.

MIG-FLUX CORED	MAX OUTPUT 450 AMPS	DUTY CYCLE 80%	WIRE SIZE UP TO 1/16" (1.6 mm)	COOLED AIR	USAGE HEAVY DUTY
----------------	-------------------------------	--------------------------	--	----------------------	----------------------------

WELDING PROCESSES:

MIG (GMAW), Flux Cored (FCAW), Aluminum (GMAW)

Standard Options Include:

- Dual Schedule On/Off Control, Locking Trigger, Rear Connector and Knucklehead™ Flexible Conductor Tube
- Standard Conductor Tube—SMVCTLS60 (Stock No. 1240-1377) on all guns up to 15ft (4.6 m)
- SMVCTLS45 (Stock No. 1240-1376) on all guns over 15ft (4.6 m)
- Conduit Liner—44 Series

Tweco® Style Rear Connector

Adapter kits are available to fit Tweco rear connection to most wire feeders

WIRE SIZE	LENGTH	PART NO.	STOCK NO.
Up To 1/16" (1.6 mm)	10 ft (3 m)	SMV410-116	1040-1825
	12 ft (3.6 m)	SMV412-116	1040-1829
	15 ft (4.6 m)	SMV415-116	1040-1833
	15 ft (4.6 m)	SMV415-116LM	1040-1838
	15 ft (4.6 m)	SMV425-116LM	1040-1870
	20 ft (6.1 m)	SMV420-116	1040-1854
	25 ft (7.6 m)	SMV425-116	1040-1859

Miller® Style Rear Connector

WIRE SIZE	LENGTH	PART NO.	STOCK NO.
Up To 1/16" (1.6 mm)	10 ft (3 m)	SMV410M-116	1040-1827
	12 ft (3.6 m)	SMV412M-116	1040-1830
	15 ft (4.6 m)	SMV415M-116	1040-1844
	15 ft (4.6 m)	SMV415M-116DSRS	1040-1846
	15 ft (4.6 m)	SMV415M-116LC	1040-1848
	15 ft (4.6 m)	SMV415M-116LM	1040-1849
	15 ft (4.6 m)	SMV415M-116K4	1040-1874
	20 ft (6.1 m)	SMV420M-116	1040-1855
	25 ft (7.6 m)	SMV425M-116	1040-1861
	25 ft (7.6 m)	SMV425M-116LM	1040-1872

Lincoln® Style Rear Connector

Fits Lincoln LN7, 8, 9, SP200

WIRE SIZE	LENGTH	PART NO.	STOCK NO.
Up To 1/16" (1.6 mm)	10 ft (3 m)	SMV410L-116	1040-1826
	12 ft (3.6 m)	SMV412L-116	1040-1866
	15 ft (4.6 m)	SMV415L-116	1040-1839
	15 ft (4.6 m)	SMV415L-116DSRS	1040-1840
	15 ft (4.6 m)	SMV415L-116LC	1040-1842
	15 ft (4.6 m)	SMV415L-116LM	1040-1843
	15 ft (4.6 m)	SMV415L-116K4	1040-1875
	20 ft (6.1 m)	SM420L-116	1040-1869
	25 ft (7.6 m)	SMV425L-116	1040-1860
	25 ft (7.6 m)	SMV425L-116LM	1040-1871

Some Lincoln wire feeders are assembled with their K1500-2 gun receiving bushing that will accept Tweco Style MIG Guns direct from the factory. Control wire Part No. MS354-DSLJ (Stock No. 2060-2137) must be ordered separately.

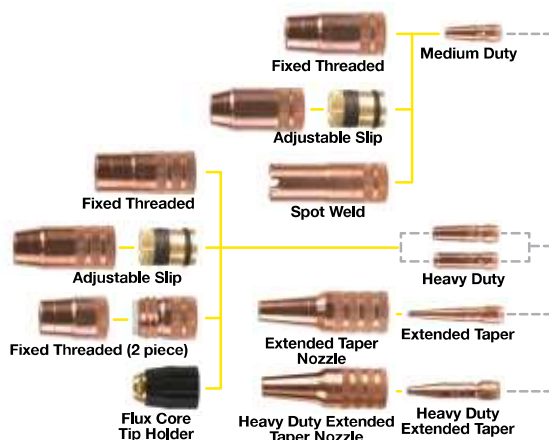
Euro-Kwik Style Rear Connector

WIRE SIZE	LENGTH	PART NO.	STOCK N
Up To 1/16" (1.6 mm)	10 ft (3 m)	SMV410X-116	1040-1828
	12 ft (3.6 m)	SMV412X-116	1040-1832
	15 ft (4.6 m)	SMV415X-116	1040-1850
	20 ft (6.1 m)	SMV420X-116	1040-1867
	25 ft (7.6 m)	SMV425X-116	1040-1868
	25 ft (7.6 m)	SMV425X-116LM	1040-1873

"DSRS" = Dual Schedule Rocker Switch; "LC" = Locking Trigger; "K4" = Knucklehead Conductor Tube; "LM" = Long reach Conductor Tube

Knucklehead Conductor Tube Part No. VCTL64SFLX480 (Stock No. 1640-1337)
Part No. VCTL64SFLX360 (Stock No. 1640-1336)

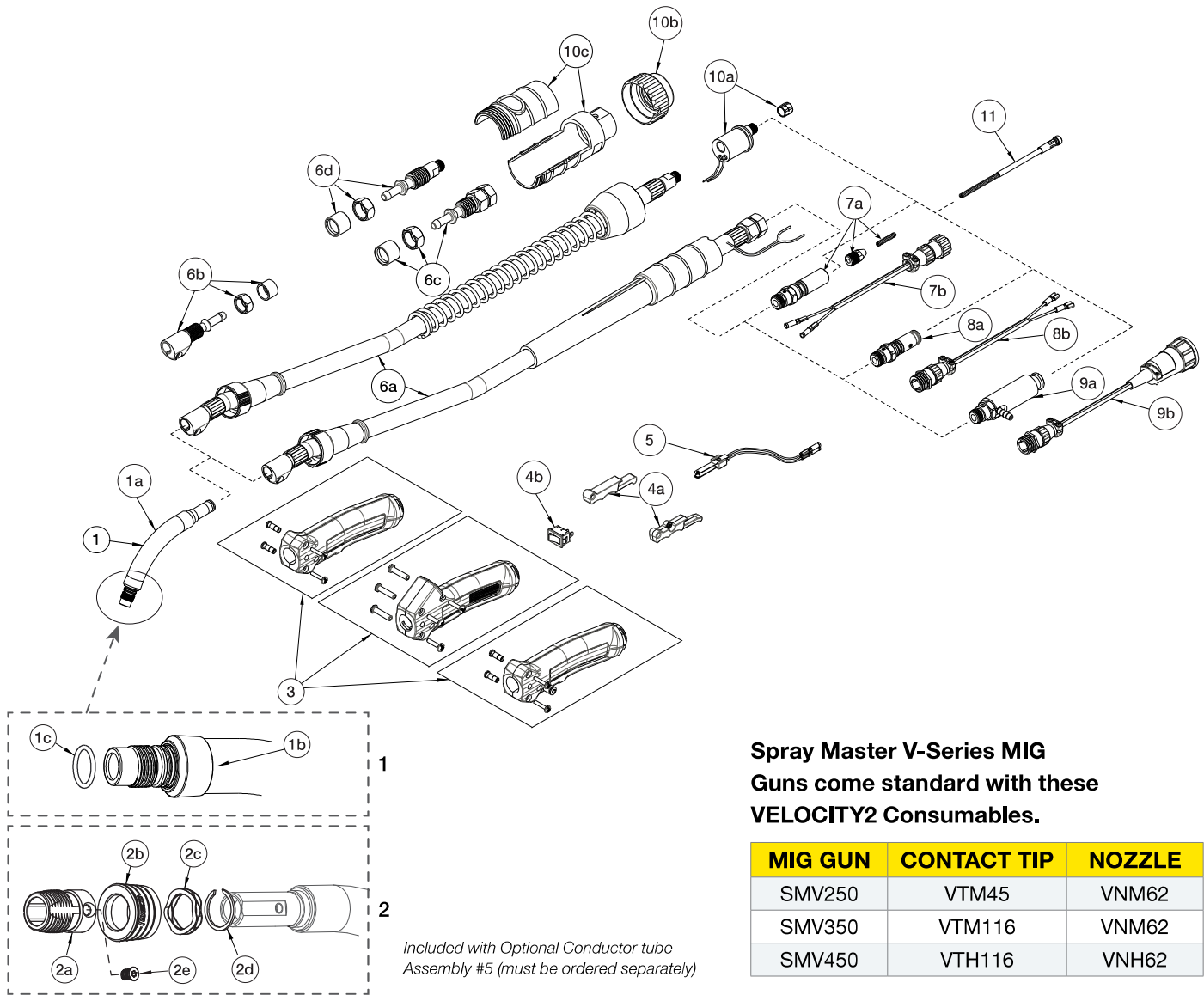
Long Reach Conductor Tube Part No. SMVCTLS60LM (Stock No. 1640-1403)
Part No. SMVCTLS45LM (Stock No. 1640-1402)



RATED OUTPUT			WIRE SIZE	COOLED	APPLICATION USAGE
Amps	Duty Cycle	Gas			
450 Amps	80%	Mixed	Up To 1/16" (1.6 mm)	Air	Heavy Duty Fabrication

EASY FIND
EASY FIND GUIDE
See Page 24 & 25 for Replacement Parts & Optional Accessories

SPRAY MASTER® V-SERIES MIG GUN REPLACEMENT PARTS



Spray Master V-Series MIG Guns come standard with these VELOCITY2 Consumables.

MIG GUN	CONTACT TIP	NOZZLE
SMV250	VTM45	VNM62
SMV350	VTM116	VNM62
SMV450	VTH116	VNH62

SPRAY MASTER® V-SERIES MIG GUN REPLACEMENT PARTS

#	DESCRIPTION	SPRAY MASTER V250 AMP		SPRAY MASTER V350 AMP		SPRAY MASTER V450 AMP	
		PART NO.	STOCK NO.	PART NO.	STOCK NO.	PART NO.	STOCK NO.
1	Conductor Tube—60°	SMVCTLS60	1240-1377	SMVCTLS60	1240-1377	SMVCTLS60	1240-1377
	Conductor Tube—45°	SMVCTLS45	1240-1376	SMVCTLS45	1240-1376	SMVCTLS45	1240-1376
	Conductor Tube—60° LM	SMVCTLS60LM	1640-1403	SMVCTLS60LM	1640-1403	SMVCTLS60LM	1640-1403
	Conductor Tube—45° LM	SMVCTL45LM	1640-1402	SMVCTL45LM	1640-1402	SMVCTL45LM	1640-1402
1a	Silicone Tubing (Sold/Foot)	VCTLJBLK	1640-1409	VCTLJBLK	1640-1409	VCTLJBLK	1640-1409
1b	Insulator, VELOCITY2 Conductor Tube Assy.	VCTLSI	1640-1408	VCTLSI	1640-1408	VCTLSI	1640-1408
1c	O-Ring (Pkg. Of 10 each)	VCTLS015	1640-1410	VCTLS015	1640-1410	VCTLS015	1640-1410
2	Conductor Tube—60° (Stainless Steel Sleeve)	SMVCT60SS	1240-1378	SMVCT60SS	1240-1378	SMVCT60SS	1240-1378
	Conductor Tube—45° (Stainless Steel Sleeve)	SMVCT45SS	1240-1379	SMVCT45SS	1240-1379	SMVCT45SS	1240-1379
	Conductor Tube—60° LM (Stainless Steel Sleeve)	SMVCT60LMSS	1640-1404	SMVCT60LMSS	1640-1404	SMVCT60LMSS	1640-1404
	Conductor Tube—45° LM (Stainless Steel Sleeve)	SMVCT45LMSS	1640-1405	SMVCT45LMSS	1640-1405	SMVCT45LMSS	1640-1405
	Conductor Tube—180° (Stainless Steel Sleeve)	SMVCT180	1240-1375	SMVCT180	1240-1375	SMVCT180	1240-1375
2a	Threaded Stainless Sleeve	VCTLSL	1640-1397	VCTLSL	1640-1397	VCTLSL	1640-1397
2b	Nozzle Collar	VCTLSLK	1640-1398	VCTLSLK	1640-1398	VCTLSLK	1640-1398
2c	Wave Spring	VCTLSPR	1640-1399	VCTLSPR	1640-1399	VCTLSPR	1640-1399
2d	Wave Spring Retainer	PMA64RS	1640-1396	PMA64RS	1640-1396	PMA64RS	1640-1396
2e	Sleeve Screw	VCT41CS	2040-2048	VCT41CS	2040-2048	VCT41CS	2040-2048
3	Handle—Standard Spray Master	SMV82	2060-2082	SMV83	2060-2083	SMV84	2060-2084
	Handle—Dual Schedule (Rocker Switch)	—	—	SMV83DS	2060-2077	SMV84DS	2060-2078
	Handle—Locking Trigger	SMV82LC	2060-2079	SMV83LC	2060-2080	SMV84LC	2060-2081
4a	Trigger—Standard & Dual Schedule	ELC94	2060-2647	ELC94	2060-2647	ELC94	2060-2647
	Trigger—Locking	MS94LC	2060-2693	MS94LC	2060-2693	MS94-LC	2060-2693
4b	Dual Schedule Rocker Switch	—	—	MS94RSW	2060-2694	MS94-RSW	2060-2694
5	Trigger Blade Assembly	ELC94-BL	2060-2671	ELC94BL	2060-2671	ELC94-BL	2060-2671
6a	Cablehoz® Assembly—10 ft (3 m)	—	—	MS310	1730-2035	—	—
	Cablehoz Assembly—12 ft (4 m)	MS212	1720-2116	MS312	1730-2036	MS512	1750-2116
	Cablehoz Assembly—15 ft (5 m)	MS215	1720-2117	MS315	1730-2037	MS515	1750-2117
	Cablehoz Assembly—25 ft (8 m)	—	—	MS325	1730-2038	MS525	1750-2118
	Cablehoz Assembly, Euro-Kwik—12 ft (4 m)	—	—	—	—	MS512X	1750-2119
	Cablehoz Assembly, Euro-Kwik—15 ft (5 m)	MS215X	1720-2108	—	—	MS515X	1750-2120
	Cablehoz Assembly, Euro-Kwik—25 ft (8 m)	MS225X	1720-2109	—	—	—	—
6b	Cablehoz Front Mechanical Connector Replacement Kit	MS102RK	2060-2132	MS104RK	2060-2133	EL106RK	2060-2620
6c	Cablehoz Rear Mechanical Connector Replacement Kit	MS172RK	2060-2134	MS174RK	2060-2135	EL176RK	2060-2697
6d	Cablehoz Rear Mechanical Connector Replacement Kit For Euro-Style	172XM	2020-2181	174XM	2040-2181	176XM	2060-2181
7a	Miller® Rear Connector	350174MHFS	2035-2118	350174MHFS	2035-2118	350174MHFS	2035-2118
7b	Miller Control Wire & Plug	WM354M	2030-2075	WM354M	2030-2075	WM354M	2030-2075
NS	Miller Dual Schedule Control Wire & Plug	—	—	194DS	2040-2195	194DS	2040-2195
8a	Tweco® Rear Connector	350174HFS	2035-2119	350174HFS	2035-2119	350174HFS	2035-2119
8b	Tweco Control Wire	MS354TAJ	2060-2139	MS354TAJ	2060-2139	MS354TAJ	2060-2139
NS	Tweco Dual Schedule Control Wire & Plug	MS354DSTJ	2060-2138	MS354DSTJ	2060-2138	MS354DSTJ	2060-2138
9a	Lincoln® Rear Connector	350174LH	2035-2112	350174LH	2035-2112	350174LH	2035-2112
9b	Lincoln Control Wire & Plug	MS354DSLJ	2060-2137	MS354DSLJ	2060-2137	MS354DSLJ	2060-2137
10a	Euro-Kwik Connection Assembly	174EX1	2040-2276	174EX1	2040-2276	174EX1	2040-2276
10b	Euro-Kwik Nut	174X2	2040-2177	174X2	2040-2177	174X2	2040-2177
10c	Euro-Kwik Connector Case	X6RC	2060-2006	X6RC	2060-2006	X6RC	2060-2006
11	Conduit	Refer to Pages 125-128					

Miller is a registered trademark of Illinois Tool Works, Inc. Lincoln is a registered trademark of Lincoln Electric Co. The aforementioned registered trademarks are in no way affiliated with Tweco. Tweco, Spray Master and Cablehoz are registered trademarks of ESAB.