

Deltaweld® 350 Systems



Quick Specs

Heavy Industrial Manufacturing

General manufacturing
General fabrication
Structural steel fabrication
Transportation
Sheet metal fabrication
Light-gauge tube and sheet

Processes

MIG (GMAW-P)
Flux-cored (FCAW)
Accu-Pulse® MIG (GMAW-P)
(with Intelx™ Pro and Intelx™ Elite feeders)

Auxiliary Power 115 V standard

Input Power
208/230/460 V, 3-phase, 60 Hz

Rated Output
350 A at 60% duty cycle

Output Range 20–400 A, 10–38 V

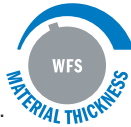
The standard in manufacturing for welders of all skill levels, with Intelx™ wire feeder options that deliver application specific benefits.

Dedicated wire feeder options

- Intelx Basic feeder with arc control means welders can produce better welds with minimal parameter adjustments.
- Intelx Pro feeder adds EZ-Set, Accu-Pulse®, memory buttons and steel and stainless weld programs.
- Intelx Elite feeder adds additional weld programs, intuitive display with on-demand graphics and more control.

Easy to use

EZ-Set simplifies parameter setup based on material thickness, removing complexity.



Pulse capable

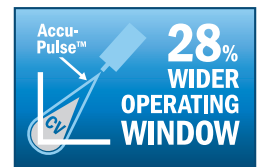
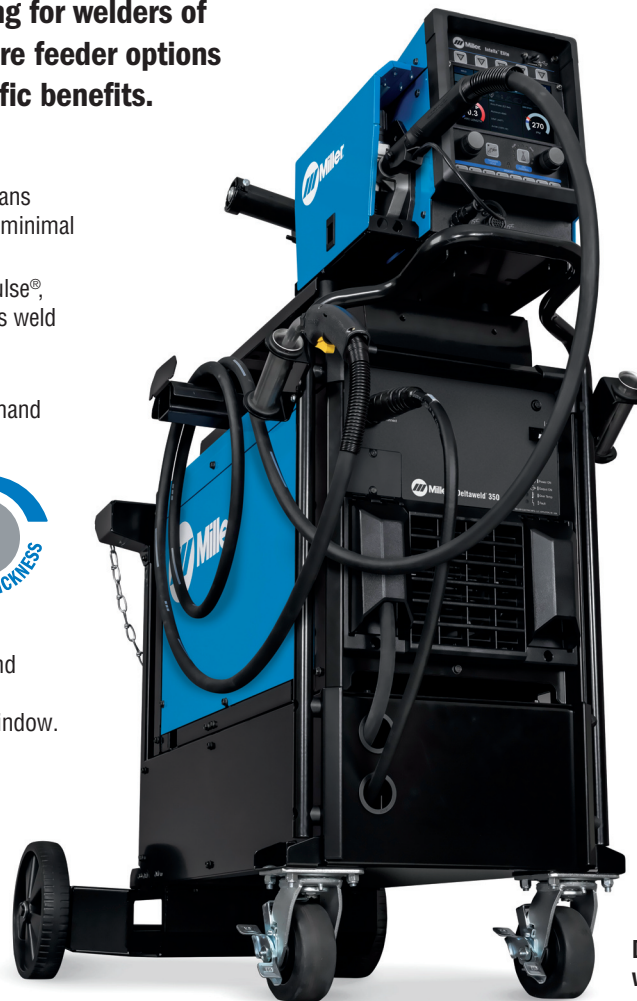
Accu-Pulse offers a more forgiving arc and compensates for variations in operator technique, providing a wider operating window.

Ready to weld

Reduce the time and hassle of setting up welding systems. Make your move to a weld-ready Deltaweld MIGRunner™.

Insight

Optional Welding Intelligence™ weld monitoring system. Get more done, produce higher-quality welds and control costs. See page 6 for more information.



Deltaweld 350 MIGRunner™ with Intelx™ Elite feeder shown.



Power source is warranted for three years, parts and labor.
Original main power rectifier parts are warranted for five years.
Gun warranted for 90 days, parts and labor.



Miller Electric Mfg. LLC
An ITW Welding Company
1635 West Spencer Street
P.O. Box 1079
Appleton, WI 54912-1079 USA

Equipment Sales US and Canada
Phone: 866-931-9730
FAX: 800-637-2315
International Phone: 920-735-4554
International FAX: 920-735-4125

MillerWelds.com
f t y o i n



Deltaweld® 350 Features



Quality-engineered cable management protects your connections to keep you productive.



Deltaweld 350 with Insight

Wind Tunnel Technology™

Internal air flow that protects electrical components and PC boards from dirt, dust, debris — greatly improving reliability.

Fan-On-Demand™

operates only when needed reducing noise, power consumption, and the amount of airborne contaminants pulled through the machine.



ArcConnect™ is a next generation communication that utilizes high speed signals to improve weld performance and allow point-of-use controls to be located at the feeder.

Backwards compatibility. Models are available with both ArcConnect and the standard Miller® 14-pin for use with older Miller® wire feeders.



Deltaweld 350 with meters, 14-pin receptacle and Insight



Standard 115-volt auxiliary power

provides 15 amps of circuit-breaker-protected power.

Intelx™ Feeder Features



Balanced-pressure drive-roll design and tensioners feed wire in its truest and straightest form for consistent feedability, resulting in better welding performance.

Accu-Mate™ connection aligns the gun perfectly in the drive-roll carrier—preventing the gun from being pulled loose and providing consistent wire feeding.

Drive rolls and guides are common with other Miller® industrial feeders (use existing, not new parts).

Inlet guide and intermediate guide installation is toolless.

Rotatable drive assembly allows operator to rotate the drive, eliminating severe bends in the wire feed path. This extends gun-liner life and aids in feeding difficult wires.



Single-wire feeder swivels for convenience and function, eliminating wear on gun and liner assembly. It moves with the MIG gun, allowing operator to see the front of the feeder and which parameters are selected.



Intelx Pro single-wire feeder

- Memory buttons for quick program recall
- Display and controls for volts/arc length, wire feed speed, and EZ-Set (if selected)
- Arc control to fine tune the welding arc
- LCD setup screen for easy selection of welding processes
- Jog and purge button
- Trigger hold, trigger select, preflow and postflow buttons



Intelx Elite single-wire feeder

- Soft keys to easily navigate menus
- Full-color LCD screen to simplify the setup and operation of a fully featured feeder
- Arc control to fine tune welding arc
- Memory buttons for quick program recall
- Trigger connections for standard MIG gun and XR-Aluma-Pro™ Plus and XR™-Pistol Plus push-pull guns



Dual-wire models allow two different wire types to be available on one feeder, avoiding downtime from changing spools and drive rolls.

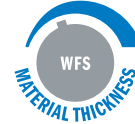
Intelx™ Feeders Comparison



Feature	Intelx™ Basic Feeder	Intelx™ Pro Feeder	Intelx™ Elite Feeder
Digital meters	■	■	Full color LCD
Remote voltage	■	■	■
Wire feed speed	■	■	■
Arc control	■	■	■
Trigger hold	■	■	■
Wire jog and purge	■	■	■
Wire feed speed feedback	■	■	■
Four drive rolls	■	■	■
Rotatable drive	■	■	■
Up to 60 lb. spool	■	■	■
Dual-wire models	■	■	■
MIG process	■	■	■
Insight Core™ compatible*	■	■	■
Insight Centerpoint™ Basic compatible*	■	■	■
EZ-Set MIG		■	■
EZ-Set Accu-Pulse®		■	■
Trigger select		■	■
Preflow		■	■
Postflow		■	■
Memory slots		2	8
Out-of-box steel programs		■	■
Out-of-box stainless programs		■	■
Out-of-box aluminum programs			■
Out-of-box nickel programs			■
Out-of-box copper nickel programs			■
Out-of-box silicon bronze programs			■
Out-of-box titanium programs			■
Profile Pulse™			■
Weld sequence control			■
Trigger dual schedule			■
Dual schedule switch support			■
Parameter limits			■
Memory lockouts			■
System lock			■
Auto thread			■
Auto purge			■
Insight Centerpoint™ Premium compatible*			■

Processes include:

- MIG
- EZ-Set MIG (Intelx Pro and Intelx Elite)
- EZ-Set Accu-Pulse (Intelx Pro and Intelx Elite)



Intelx Pro and Intelx Elite feeder programs include:

- Different wire sizes
- Different gas types
- Flux-cored
- Metal-cored
- Steel
- Stainless steel

Additional Intelx Elite feeder programs include:

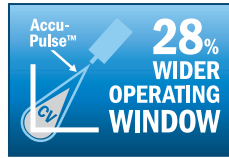
- Aluminum
- Nickel
- Copper nickel
- Silicon bronze
- Titanium

*Insight module required.

Deltaweld® 350 System Processes

Accu-Pulse®

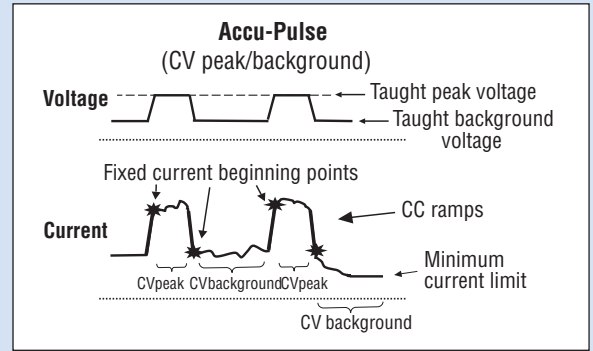
- More forgiving arc compensates for variations in operator technique
- Most adaptive arc on 16 gauge (1.6 mm) and thicker
- Designed for all weld positions



Best For	Standard Spray	Accu-Pulse	Short Circuit
Deposition	A	A	D
Gap filling	D	B	A
Low heat input	D	B	A
Out-of-position welds		A	B
Low spatter	A	A	C
Thick metals	A	A	D
Thin metals		B	A
Increased travel speed	A	A	B

HOT **COLD**

Ratings A, B, C, and D are relative values. An "A" rating indicates a best fit between your performance needs and process. A "blank" rating indicates that the process is not recommended for that application.



The Accu-Pulse process allows for precise control of the pulse arc. Accu-Pulse provides optimum molten puddle control and has power to increase wire feed speeds and deposition 20 to 25 percent in many applications. In most cases, slightly different ratios of gas mixtures will perform well using a similar program and adjusting arc length or the appropriate arc control for the selected process. Contact Miller for more information on less common materials and gas combinations.

Deltaweld® 350 Specifications (Subject to change without notice.)



Mode	Amp/Volt Ranges	Rated Output	Amps Input at Rated Output, 60 Hz, 3-Phase						Dimensions (Includes lift eye)	Net Weight
			208 V	230 V	460 V	575 V	KVA	KW		
MIG (GMAW)	10–38 V	300 A at 29 VDC, 100% duty cycle	29.3	26.5	14.6	—	11.6	10.0	H: 22.36 in. (568 mm) W: 15.35 in. (390 mm) D: 29.15 in. (740 mm)	115 lb. (52.2 kg)
		350 A at 31.5 VDC, 60% duty cycle	36.7	33.4	18.1	—	14.5	12.5		
		425 A at 35.25 VDC, 30% duty cycle	50.0	45.1	23.1	—	18.5	16.9		

Certified by Canadian Standards Association to both the Canadian and U.S. Standards.

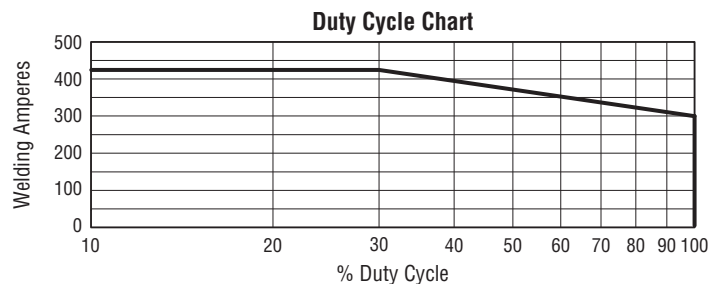
Intelx™ Feeder Specifications (Subject to change without notice.)



Input Power	Welding Power Source	Input Welding Circuit Rating	Wire Feed Speed	Wire Diameter Capacity	Maximum Spool Size Capacity	Dimensions (H x W x D)	Net Weight
50 VDC	Deltaweld 350 or 500	600 A at 113 VDC, 60% duty cycle	50–780 ipm (1.3–19.8 m/min.)	.023–5/64 in. (0.6–2.0 mm) Elite model only: Aluminum: .035–1/16 in. (0.9–1.6 mm)	18 in. (457 mm) 60 lb. (27 kg)	Single-wire: 16.25 x 12.38 x 27.88 in. (413 x 314 x 708 mm) Dual-wire: 14 x 18 x 34.5 in. (356 x 457 x 876 mm)	Single-wire: 44.8 lb. (20.3 kg) Dual-wire: 77 lb. (34.9 kg)

Certified by Canadian Standards Association to both the Canadian and U.S. Standards.

Deltaweld® 350 Performance Data



Insight Welding Intelligence™

With an Insight weld monitoring system you can get more done, produce higher-quality welds and control costs.

Insight Core™

Insight Core is an easy-to-use welding information solution that gives visibility into your operation so you can improve productivity.

- **Measure welding productivity.** See each welder's arc-on time to set baselines, plan improvements and measure goals.
- **View easy-to-understand reports.** Dashboards show trends and develop reports. Compare welders, cells and plants.
- **Identify welding costs.** Make improvements to reduce expenses.
- **Easily install and use.** Just connect it to the internet. View secure data on any web-connected device anywhere.



Insight Centerpoint™ (Purchased license(s) of Centerpoint required.)

On-premises application providing productivity/utilization metrics, capture of welding parameters, operator weld sequence governance, and integration with enterprise IIoT solutions. Scalable to end user needs.

- **Measure welding productivity.** See each welder's arc-on time to set baselines and plan improvements. Capture activities to understand downtime reasons.
- **Govern operator tasks.** Through an easy-to-use operator interface direct welding and non-welding tasks to follow standard work practices, reduce out of sequence welds, and prevent missing welds.
- **Reduce training costs.** Utilize Centerpoint as the "Digital Mentor" to train new welders on proper production steps freeing up senior personnel for more productive activities.
- **Configure weld process remotely.** Full fleet management allows configuration of Deltaweld settings from Centerpoint.

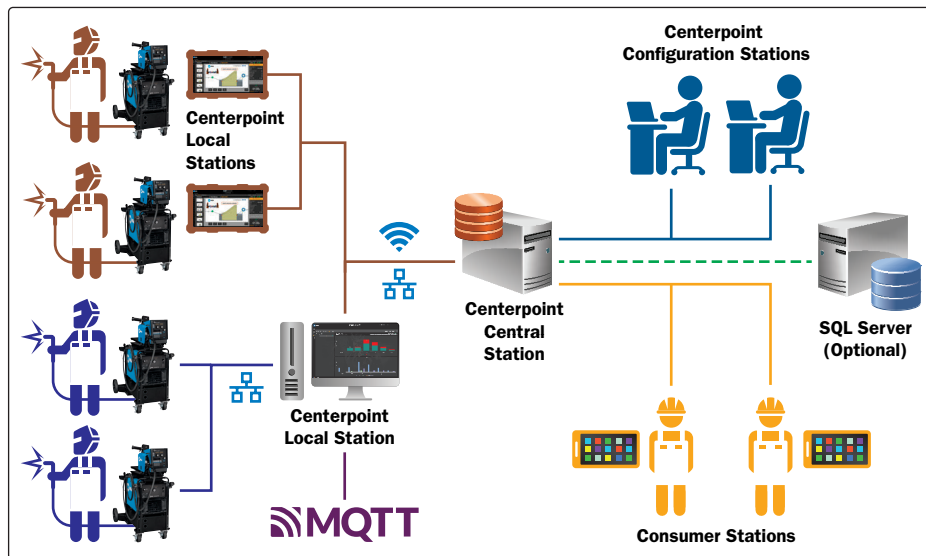
Modes of operation

- **Basic mode** included at no cost.
- **Premium mode** requires a purchased capability key for each Deltaweld.

301485 Centerpoint v10 Single License

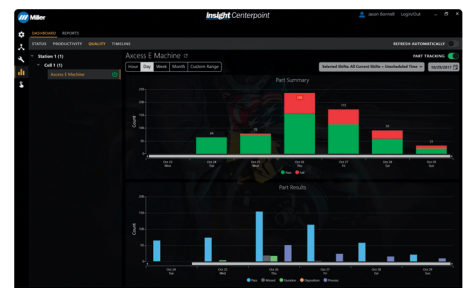
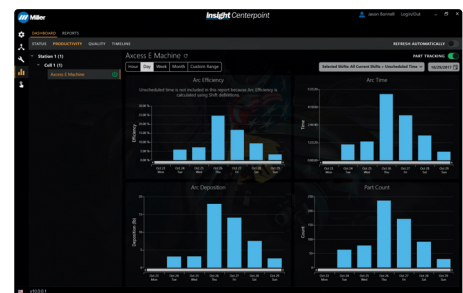
301703 Centerpoint Basic Capability Activation

301490 Centerpoint Premium Capability Activation



▲ Premium mode

▼ Basic mode



Learn more at MillerWelds.com/insight

Deltaweld® 350 MIGRunner™ Packages

951792001
package shown



Deltaweld 350 MIGRunner Packages with Intellex™ Basic Feeder

- 951792001 MIGRunner with single-wire Intellex Basic
- 951817001 MIGRunner with dual-wire Intellex Basic

Packages include:

- Deltaweld power source (907747) with factory-installed running gear with cable holder, gun holders and chains for gas cylinders
- Intellex Basic single- **OR** dual-wire feeder
- 15 ft. (4.6 m) Bernard® BTB Gun 400 A (two with dual-wire feeder) with AccuLock™ consumables
- Cart accessory kit for single- or dual-wire feeders consisting of flowmeter regulator with 5 ft. (1.5 m) gas hose (two with dual-wire feeder), 10 ft. (3 m) 4/0 feeder weld cable with lugs, 15 ft. (4.6 m) work cable with 600-amp C-clamp, and 9 ft. (2.7 m) ArcConnect control/motor cable
- .035/.045 in. V-groove drive rolls
- Quick-setup guide and video

951777001
package shown



Deltaweld 350 MIGRunner Packages with Intellex™ Pro Feeder

- 951777001 MIGRunner with single-wire Intellex Pro
- 951825001* MIGRunner with Insight and single-wire Intellex Pro
- 951818001 MIGRunner with dual-wire Intellex Pro

Packages include:

- Deltaweld power source (907747, or 907747002 on Insight package) with factory-installed running gear with cable holder, gun holders and chains for gas cylinders
- Intellex Pro single- **OR** dual-wire feeder
- 15 ft. (4.6 m) Bernard® BTB Gun 400 A (two with dual-wire feeder) with AccuLock™ consumables
- Cart accessory kit for single- or dual-wire feeders consisting of flowmeter regulator with 5 ft. (1.5 m) gas hose (two with dual-wire feeder), 10 ft. (3 m) 4/0 feeder weld cable with lugs, 15 ft. (4.6 m) work cable with 600-amp C-clamp, and 9 ft. (2.7 m) ArcConnect control/motor cable
- .035/.045 in. V-groove drive rolls
- Quick-setup guide and video

951948001
package shown



Deltaweld 350 MIGRunner Packages with Intellex™ Elite Feeder

- 951946001 MIGRunner with single-wire Intellex Elite
- 951947001** MIGRunner with Insight and single-wire Intellex Elite
- 951948001 MIGRunner with dual-wire Intellex Elite
- 951952001 MIGRunner with single-wire Intellex Elite and push-pull gun
- 951953001 MIGRunner with dual-wire Intellex Elite and push-pull gun

Packages include:

- Deltaweld power source (907747, or 907747002 on Insight package) with factory-installed running gear with cable holder, gun holders and chains for gas cylinders
- Intellex Elite single- **OR** dual-wire feeder
- Push-only gun packages: 15 ft. (4.6 m) Bernard® BTB Gun 400 A (two with dual-wire feeder) with AccuLock™ consumables
- Push-pull gun packages: 25 ft. (7.6 m) XR-Aluma-Pro Plus push-pull gun (and 15 ft. [4.6 m] Bernard® BTB Gun 400 A with AccuLock™ consumables on dual-wire feeder)
- Cart accessory kit for single- or dual-wire feeders consisting of flowmeter regulator with 5 ft. (1.5 m) gas hose (two with dual-wire feeder), 10 ft. (3 m) 4/0 feeder weld cable with lugs, 15 ft. (4.6 m) work cable with 600-amp C-clamp, and 9 ft. (2.7 m) ArcConnect control/motor cable
- Push-only gun packages: .035/.045 in. V-groove drive rolls
- Push-pull gun packages: .035/.047 U-groove drive rolls (and .035/.045 in. V-groove drive rolls with dual-wire feeder)
- Quick-setup guide and video

*Includes Insight Core™ and Insight Centerpoint™ Basic mode. Insight Centerpoint Basic mode requires Centerpoint license(s).

**Includes Insight Core™ and Insight Centerpoint™ Basic mode. Insight Centerpoint Basic mode requires Centerpoint license(s).
Optional Insight Centerpoint Premium (301490) can be added for use with Intellex Elite feeder/ROI.

Genuine Miller® Accessories



Deltaweld 350/500 Running Gear 301523

Features small footprint, dual-cylinder rack, chains for gas cylinders, ergonomic handle design and lockable front casters with two torch holders, and storage area below.



Cart Accessory Kit 301528

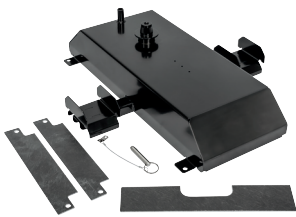
Single-wire feeder kit for use with running gear 301523. See note below for dual-wire feeder kit. Consists of flowmeter regulator with 5-foot (1.5 m) gas hose, 10-foot (3 m) 4/0 feeder weld cable with lugs, 15-foot (4.6 m) work cable with 600-amp C-clamp, and 9-foot (2.7 m) ArcConnect control/motor cable. Dual kit comes with an additional flowmeter regulator and gas hose.

Note: For dual-wire feeder kit both 301528 and 301579 are required.



Stationary Handle Kit 301529

Allows easy movement and portability of the power source.



Feeder Swivel Kit 301533

For single- and dual-wire feeders. Allows feeder to mount to the top of Deltaweld.

Note: ONLY the single-wire feeder can swivel.



Hanging Bail 058435

Used for suspending feeder over work area.



Spool Covers

057607 For single-wire feeders and left side of dual-wire feeders

090389 For right side of dual-wire feeders For 12-inch (305 mm) spool.

Note: Spool covers cannot be installed if the wire drive assembly is in a rotated position.

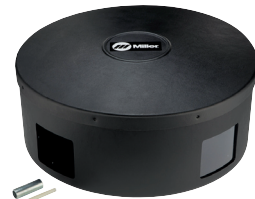
Spool Adapter 047141

For use with 14-pound (6.4 kg) spool of Lincoln self-shielding wire.



Wire Reel Assembly 108008

For 60-pound (27 kg) coil of wire.



Reel Covers

195412 For single-wire feeders and left side of dual-wire feeders

091668 For right side of dual-wire feeders For 60-pound (27 kg) coil. Helps to protect the welding wire from dust and other contaminants.

Note: Reel covers cannot be installed if the wire drive assembly is in a rotated position.



ArcConnect Control/Motor Cables

280471009 9 ft. (2.7 m)

280471015 15 ft. (4.6 m)

280471025 25 ft. (7.6 m)

280471050 50 ft. (15.2 m)

280471075 75 ft. (22.9 m)

280471100 100 ft. (30.5 m)

280471150 150 ft. (45.7 m)

Connects power source directly to feeder or remote operator interface.

Note: Cables cannot be joined together to create longer lengths and extension cables are not available.



Work Sense Leads (volt sense)

300461 25 ft. (7.6 m)

300462 50 ft. (15.2 m)

When connected from the back of the wire feeder to the workpiece, the work

sense lead provides accurate voltage feedback on the wire feeder display, and compensates for any voltage drop from the weld cables.

Coolant Systems

For more information see literature AY/7.2.



Coolmate™ 3 043007 115 V

For use with water-cooled torches rated up to 600 amps. Unique paddle-wheel indicator, external filter and easy-fill spout.



Coolmate™ 3.5 300245 115 V

Industrial, 3.5-gallon cooler designed for water-cooled torches rated up to 600 amps.

Coolant 043809

Sold in cases of four one-gallon recyclable plastic bottles. Miller coolants contain a base of ethylene glycol and deionized water to protect against freezing to -37 degrees Fahrenheit (-38°C) or boiling to 227 degrees Fahrenheit (108°C). Also contains a compound that resists algae growth.

XR™ Push-Pull Guns (ONLY for use with left-hand drive of Intelx™ Elite bench feeders. NOT for use with ROI or Swingarc™ configurations.)



XR-Aluma-Pro Plus



XR-Pistol Plus

XR-Aluma-Pro™ Plus Guns
301575 15 ft. (4.6 m), air-cooled
301574 25 ft. (7.6 m), air-cooled
301576 15 ft. (4.6 m), water-cooled
301577 25 ft. (7.6 m), water-cooled

XR™-Pistol Plus Guns
300753 15 ft. (4.6 m), air-cooled
300754 25 ft. (7.6 m), air-cooled
300757 25 ft. (7.6 m), water-cooled

Available in air- or water-cooled versions in multiple lengths for extended reach with trouble-free, reliable feeding.

Aluminum-series-specific tension setting ensures smooth wire feeding performance with 4000 or 5000 series aluminum wires.

Replaceable feed cable liner is designed to provide consistent arc performance. It also reduces parts cost and service time by allowing a simple means of removing and replacing liner and not the complete feed cable.

Isolated common knurled drive roll helps reduce wear, reducing down time and cost.

Easy-to-rotate self-seating head tube allows for better access into tight spots, providing excellent current transfer.

Serviceability. These guns feature a full-length hook-and-loop sealed leather jacket with integrated strain reliefs for easy cable maintenance and protection. Additionally, the Aluma-Pro Plus guns feature quick connections between the control cable and electrical components (trigger, motor, potentiometer).

Specifications (Subject to change without notice.)

Model	Welding Current Rating	Wire Feed Speed	Wire Type and Diameter Capacity	Dimensions	Net Weight (Gun only)
XR-Aluma-Pro Plus (Air-cooled)	300 A at 100% duty cycle	70–900 ipm (1.8–23 m/min.) dependent on feeder used	.030–1/16 in. (0.8–1.6 mm) aluminum wire	H: 5 in. (127 mm) W: 2.5 in. (64 mm) D: 17 in. (432 mm)	2.5 lb. (1.1 kg)
XR-Aluma-Pro Plus (Water-cooled)	400 A at 100% duty cycle	70–900 ipm (1.8–23 m/min.)	Requires gun wire kit 230708 to run 1/16 in. (1.6 mm) wire		2.9 lb. (1.3 kg)
XR-Pistol Plus (Air-cooled)	200 A at 100% duty cycle 250 A at 60% duty cycle	70–900 ipm (1.8–23 m/min.)	.030–1/16 in. (0.8–1.6 mm) aluminum wire	H: 7.375 in. (187 mm) W: 1.875 in. (48 mm) D: 10.625 in. (270 mm)	2.2 lb. (1 kg)
XR-Pistol Plus (Water-cooled)	400 A at 100% duty cycle		Requires gun wire kit 230708 to run 1/16 in. (1.6 mm) wire		2.4 lb. (1.1 kg)

Certified by Canadian Standards Association to both the Canadian and U.S. Standards. Conforms to European standards.

Note: XR-Aluma-Pro Plus and XR-Pistol Plus guns are only compatible with MPa Plus feeders and the left-hand drive of Intelx Elite bench feeders.

Drive Roll Kits and Guides

Select drive roll kits from chart below according to type and wire size being used. Drive roll kits include four drive rolls, necessary guides and feature an anti-wear sleeve for inlet guide.

Wire Size	V-groove for hard wire	U-groove for soft wire or soft-shelled cored wires	V-knurled for hard-shelled cored wires	U-cogged for extremely soft wire or soft-shelled cored wires (i.e., hard facing types)
.023/.025 in. (0.6 mm)	087132	—	—	—
.030 in. (0.8 mm)	046780	—	—	—
.035 in. (0.9 mm)	046781	044750	046792	—
.035 and .045 in. (0.9 and 1.2 mm)	227061*	244293**	—	—
.040 in. (1.0 mm)	191917	—	—	—
.045 in. (1.1/1.2 mm)	046782	046785	046793	083319
.052 in. (1.3/1.4 mm)	046783	046786	046794	—
1/16 in. (1.6 mm)	046784	046787	046795	046800
.068/.072 in. (1.8 mm)	—	—	—	—
5/64 in. (2.0 mm)	—	046788	046796	046801

*Included with Intelx feeders. Drive roll is dual-size reversible with one .035-inch and one .045-inch groove.

**Included with aluminum packages. Drive roll is dual-size reversible with one .035-inch and one .045-inch groove which also accommodates .047-inch (3/64-inch) wire.

Wire Guides

Wire Size	Inlet Guide	Intermediate Guide
.023–.040 in. (0.6–1.0 mm)	221030	056206
.045–.052 in. (1.2–1.3 mm)	221030	056207
1/16–5/64 in. (1.6–2.0 mm)	221030	056209
5/64–1/8 in. (2.0–3.2 mm)	229919	056211

Note: When ordering hard wire kits, retain factory-supplied inlet guide.

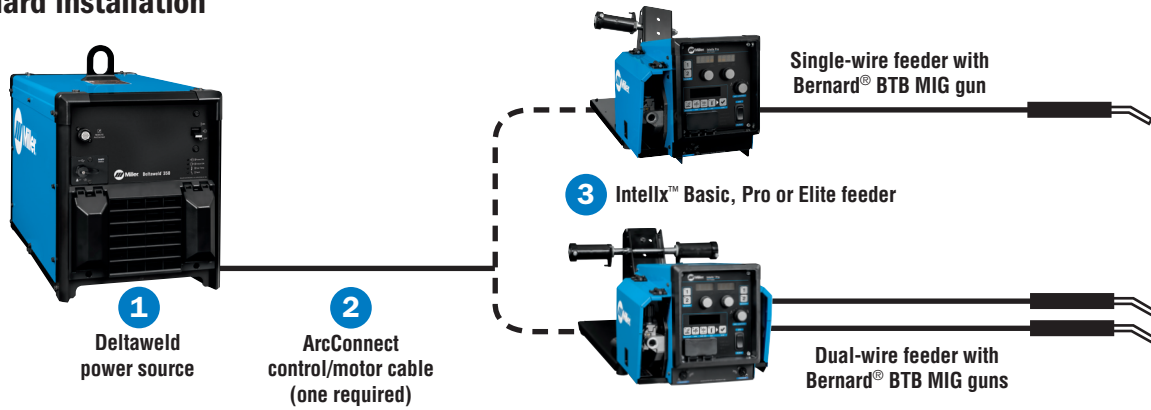
Nylon Guides for Feeding Aluminum

Wire Size	Inlet Guide and Intermediate Guide Kits
.035 in. (0.9 mm)	293928
.047 in. (1.2 mm)	293929
1/16 in. (1.6 mm)	293930

Note: U-groove drive rolls are recommended when feeding aluminum wire.

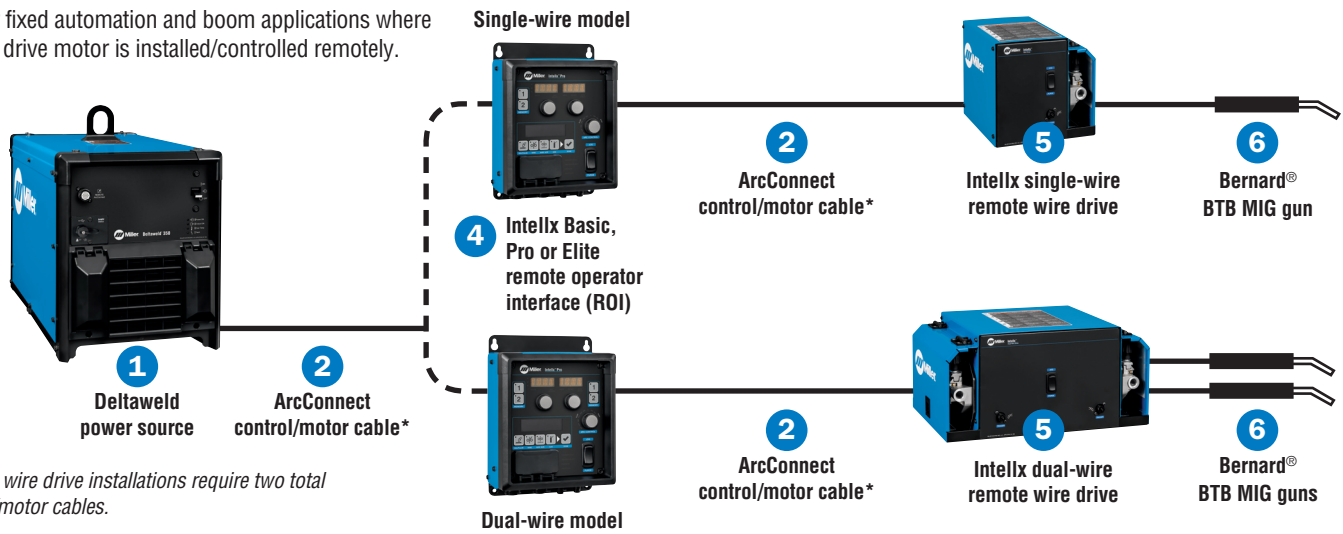
Typical Deltaweld® 350 System Installations

Standard installation



Remote wire drive installation (NOT for use with push-pull guns.)

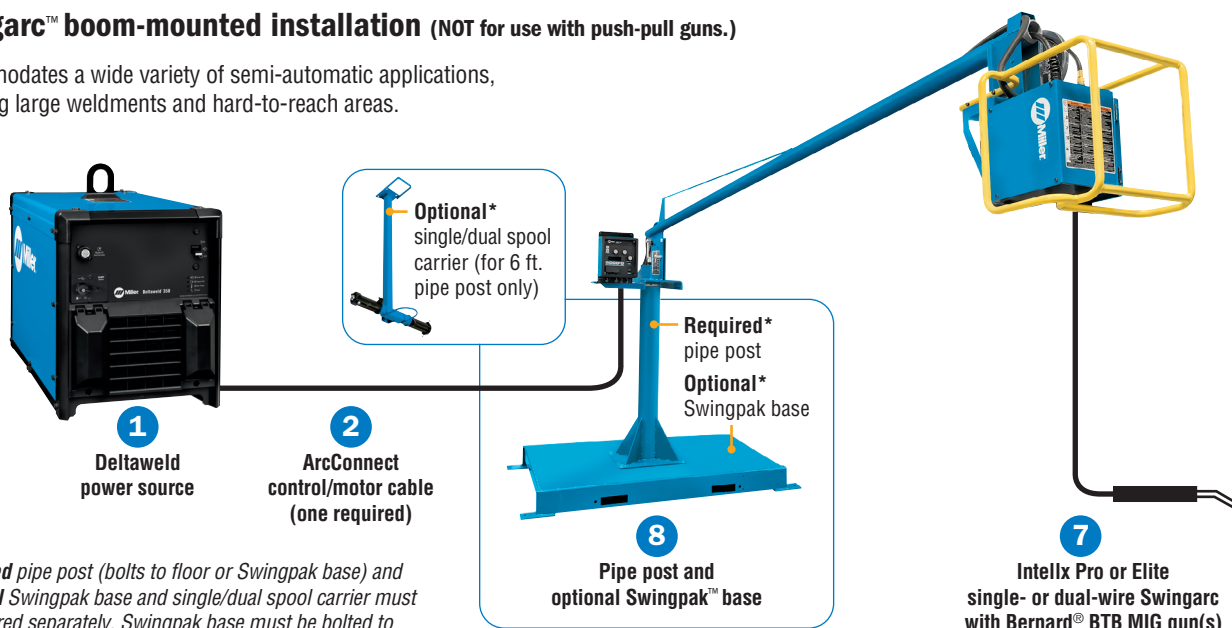
Ideal for fixed automation and boom applications where the wire drive motor is installed/controlled remotely.



*Remote wire drive installations require two total control/motor cables.

Swingarc™ boom-mounted installation (NOT for use with push-pull guns.)

Accommodates a wide variety of semi-automatic applications, including large weldments and hard-to-reach areas.



*Required pipe post (bolts to floor or Swingpak base) and optional Swingpak base and single/dual spool carrier must be ordered separately. Swingpak base must be bolted to the floor for 16-foot Swingarc. See page 11.

Note: DSS, Insight LTD and Wire Retract are not supported at this time.

Ordering Information Most popular models ◀

Configure a Custom Deltaweld System (See corresponding item numbers in Typical Deltaweld Systems Installations on page 10.) See page 12 for packages.

Power Source	Stock No.	Description	Qty.	Price	
1 Deltaweld® 350 208/230/460 V	907747 ◀	With ArcConnect			
	907747001	With ArcConnect, meters and 14-pin receptacle			
	907747002*	With ArcConnect and Insight			
	907747003*	With ArcConnect, 14-pin receptacle and Insight			
Cables and Leads					
2 ArcConnect Control/Motor Cables		See page 8 for available lengths			
	Work Sense Leads (volt sense)	See page 8 for available lengths			
Feeder, ROI and Swingarc					
3 Intelx™ Basic Bench-Style Wire Feeders	951783001	Single-wire feeder with Bernard BTB Gun 400 A	With AccuLock™ consumables and .035/.045 in. V-groove drive rolls		
	951815001	Dual-wire feeder with two Bernard BTB Gun 400 A			
	Intelx Pro Bench-Style Wire Feeders	951784001 ◀		Single-wire feeder with Bernard BTB Gun 400 A	
		951816001		Dual-wire feeder with two Bernard BTB Gun 400 A	
	Intelx Elite	951941001	Single-wire feeder with Bernard BTB Gun 400 A		
	Bench-Style Wire Feeders	951942001	Dual-wire feeder with two Bernard BTB Gun 400 A		
4 Intelx Basic Remote Operator Interface (ROI)	301548	Control box for single-wire drive assembly			
	301551	Control box for dual-wire drive assembly			
	Intelx Pro Remote Operator Interface (ROI)	301552	Control box for single-wire drive assembly		
		301553	Control box for dual-wire drive assembly		
5 Intelx Elite Remote Operator Interface (ROI)	301606	Control box for single-wire drive assembly			
	301607	Control box for dual-wire drive assembly			
6 Intelx Remote Wire Drive	301554	Single-wire drive assembly			
	301555	Dual-wire drive assembly			
6 Bernard BTB Gun 400 A	Q4015AE9EMC	400 A, 15 ft. (4.6 m) with AccuLock™ consumables			
XR™ Push-Pull Guns		ONLY for use with Intelx Elite bench feeders. NOT for use with ROI or Swingarc configurations. See page 9			
7 Intelx Pro Swingarc™ Boom-Mounted Wire Feeders	951804001	12 ft. single-wire model with Bernard BTB Gun 400 A	With AccuLock™ consumables and .035/.045 in. V-groove drive rolls		
	951806001	16 ft. single-wire model with Bernard BTB Gun 400 A			
	951932001	12 ft. dual-wire model with two Bernard BTB Gun 400 A			
	Intelx Elite Swingarc™ Boom-Mounted Wire Feeders	951943001		12 ft. single-wire model with Bernard BTB Gun 400 A	
		951944001		16 ft. single-wire model with Bernard BTB Gun 400 A	
		951945001		12 ft. dual-wire model with two Bernard BTB Gun 400 A	
8 Pipe Post	149838	4 ft. pipe post. Required for mounting Swingarc booms			
	149839	6 ft. pipe post. Required for mounting Swingarc booms			
	Swingpak™ Base	183997	Optional mounting platform for pipe post		
Accessories					
Deltaweld Running Gear	301523	For Deltaweld 350/500			
Cart Accessory Kit		For single- or dual-wire bench feeders. See page 8			
Stationary Handle Kit	301529				
Feeder Accessories		See page 8			
Single/Dual Spool Carrier	300352	Optional spool carrier for 6 ft. pipe post			
Coolant Systems					
		See page 8			

Date:

Total Quoted Price:

*Includes Insight Core™ and Insight Centerpoint™ Basic mode. Insight Centerpoint Basic mode requires Centerpoint license(s).
Optional Insight Centerpoint Premium (301490) can be added for use with Intelx Elite feeder/ROI.

Ordering Information Most popular models ◀

Deltaweld® 350 Packages	Stock No.	Description	Qty.	Price
Deltaweld 350 MIGRunner™ with Single-Wire Intellx™ Basic	951792001	Includes Deltaweld 350 power source (907747), single- or dual-wire Intellx Basic feeder with Bernard® BTB Gun 400 A (two with dual-wire feeder) and AccuLock™ consumables. See page 7 for complete package description		
Deltaweld 350 MIGRunner with Dual-Wire Intellx Basic	951817001			
Deltaweld 350 MIGRunner with Single-Wire Intellx Pro	951777001 ◀	Includes Deltaweld 350 power source (907747, or 907747002 on Insight package), single- or dual-wire Intellx Pro feeder with Bernard® BTB Gun 400 A (two with dual-wire feeder) and AccuLock™ consumables. See page 7 for complete package description		
Deltaweld 350 MIGRunner with Insight and Single-Wire Intellx Pro	951825001*			
Deltaweld 350 MIGRunner with Dual-Wire Intellx Pro	951818001			
Deltaweld 350 MIGRunner with Single-Wire Intellx Elite	951946001	Includes Deltaweld 350 power source (907747, or 907747002 on Insight package), single- or dual-wire Intellx Elite feeder with Bernard® BTB Gun 400 A (two with dual-wire feeder) and AccuLock™ consumables. See page 7 for complete package description		
Deltaweld 350 MIGRunner with Insight and Single-Wire Intellx Elite	951947001**			
Deltaweld 350 MIGRunner with Dual-Wire Intellx Elite	951948001			
Deltaweld 350 with Insight, Running Gear, and Cart Accessory Kit	907802**	Same as above, but without wire feeder and MIG gun (see options on page 11). If ordering a dual-wire feeder, also order accessory kit (301579)		
Deltaweld 350 MIGRunner with Single-Wire Intellx Elite and Push-Pull Gun	951952001	Includes Deltaweld 350 power source (907747), single- or dual-wire Intellx Elite feeder with XR-Aluma-Pro™ Plus push-pull gun (and Bernard® BTB Gun 400 A with AccuLock™ consumables on dual-wire feeder). See page 7 for complete package description		
Deltaweld 350 MIGRunner with Dual-Wire Intellx Elite and Push-Pull Gun	951953001			

Date :

Total Quoted Price:

*Includes Insight Core™ and Insight Centerpoint™ Basic mode. Insight Centerpoint Basic mode requires Centerpoint license(s).

**Includes Insight Core™ and Insight Centerpoint™ Basic mode. Insight Centerpoint Basic mode requires Centerpoint license(s).
Optional Insight Centerpoint Premium (301490) can be added for use with Intellx Elite feeder/ROI.

Distributed by:

