

/ Perfect Welding / Solar Energy / Perfect Charging



# ACCUPOCKET 150/400

Arc stability without a power supply

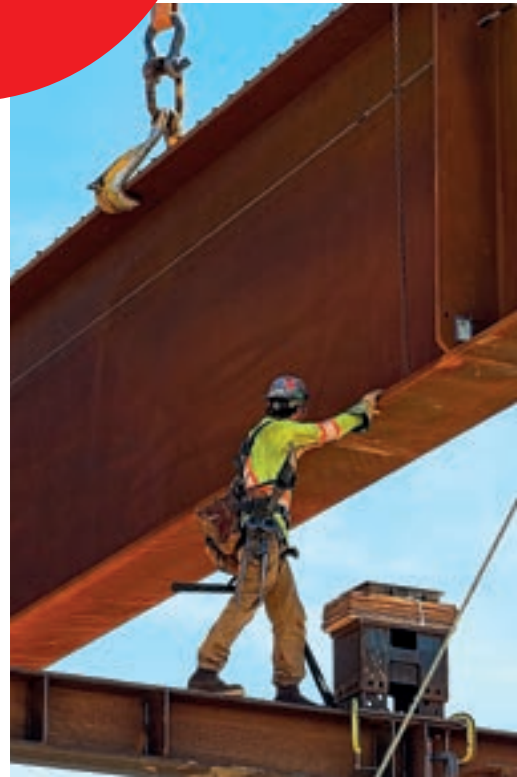


# NO ARC STABILITY WITHOUT A GRID CONNECTION? NO PROBLEM!

What will the conditions be like when welding on site? Will the grid connection there be sufficient for the power source? Thanks to AccuPocket, these concerns will now be a thing of the past. With its battery mode, AccuPocket offers you a welding process that is completely independent from the grid. With conventional solutions, costly grid leads or a heavy, noisy generator are often required at the welding site – neither of which constitute ideal conditions for a welder. This is where AccuPocket can help.

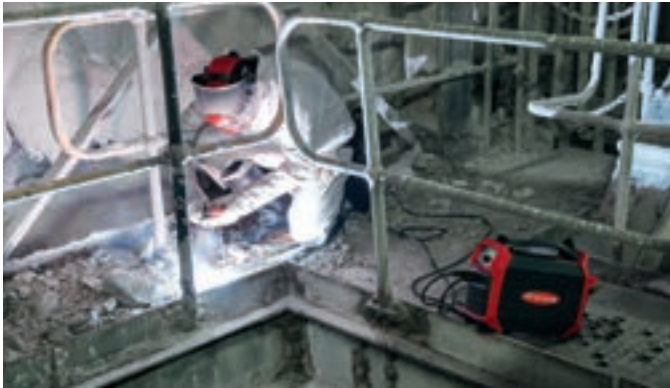
What's your  
welding challenge?

Let's get connected.





# ADVANTAGES OF THE ACCUPOCKET



## THREE DIFFERENT OPERATING MODES

- / Up to 18 electrodes (2.5 mm) with a battery charging in battery mode
- / Generator-powered operation (2 kVA is sufficient)
- / Stable arc for simultaneous charging and welding in hybrid mode

## MOBILE AND ROBUST

- / Integrated battery
- / 11 kg overall weight (without charger)
- / Robust design for use in challenging conditions
- / TIG version with additional functions available



## INCREASED ARC STABILITY THANKS TO BATTERY TECHNOLOGY

- / Easy electrode ignition due to high short-circuit currents
- / Welding voltage independent of state of charge, no arc break
- / Rutile, basic, CEL and special electrodes
- / 6 x 3.25 mm or 18 x 2.5 mm electrodes for full battery charging or 130 cm TIG weld seam at 150 A

## SAFE, HIGH-POWER BATTERY MEETS WELDING TECHNOLOGY

- / LiFePo<sub>4</sub>, 400 Wh
- / No Memory Effect
- / Low self discharge
- / Voltage monitoring for all battery cells
- / Protection from overcharging, deep discharge and overheating
- / Rapid charging in 30 minutes (80% performance)



## TECHNICAL DATA

	AccuPocket	Active Charger 1000/230	Active Charger 1000/120
Nominal voltage of rechargeable battery	52.8 V	- 230 V AC, ±15%	- 120 V AC, ±5%
Charging current during normal charging	10 A	50/60 Hz	
Charging current during rapid charging	18 A	max. 9.5 A eff.	max. 16 A eff.
Battery capacity	396 Wh	max. 16 A	max. 20 A
Battery type	Lithium ion	max. 95%	max. 93.5%
Welding current range		max. 1100 W	
Electrode DC	10–140 A	max. 2.4 W	max. 1.7 W
TIG DC	3–150 A	I (with ground conductor)	
Welding current in hybrid mode		None	
Manual metal arc welding at 40°C (104°F)	18% DC, 140 A 25% DC, 100 A 100% DC, 40 A	Max. approved grid impedance at the interface (PCC) with the public grid	
Welding current in hybrid mode		EMC device class	
TIG welding at 40°C (104°F)	25% DC, 150 A 50% DC, 100 A 100% DC, 65 A	A	
Open circuit voltage	90 V	Marks of conformity	
Reduced open circuit voltage	15 V	CE	
Degree of protection	IP 23	Output voltage	
Type of cooling	AF	30–58 V DC	
Marks of conformity	CE, S	Output current	
Dimensions l/w/h	435 x 160 x 310 mm	Max. 18 A DC	
		Output power	
		max. 1040 W	max. 1025 W
		Cooling	
		Convection and fan	
		Dimensions l/w/h	
		270 x 168 x 100 mm	
		Weight (without cable)	
		approx. 2 kg	
		Degree of protection	
		IP43S	
		Overvoltage category	
		II	
		Device is only permitted to be operated on grids that are grounded at the neutral point.	

/ Perfect Welding / Solar Energy / Perfect Charging

### THREE BUSINESS UNITS, ONE GOAL: TO SET THE STANDARD THROUGH TECHNOLOGICAL ADVANCEMENT.

What began in 1945 as a one-man operation now sets technological standards in the fields of welding technology, photovoltaics and battery charging. Today, the company has around 4,550 employees worldwide and 1,241 patents for product development show the innovative spirit within the company. Sustainable development means for us to implement environmentally relevant and social aspects equally with economic factors. Our goal has remained constant throughout: to be the innovation leader.

Further information about all Fronius products and our global sales partners and representatives can be found at [www.fronius.com](http://www.fronius.com)

v09 May 2018 EN

**Fronius India Private Limited**  
GAT no 312, Nanekarwadi  
Chakan, Taluka - Khed District  
Pune 410501  
India  
Telephone + 91 98 20 60 52 07  
[sales.india@fronius.com](mailto:sales.india@fronius.com)  
[www.fronius.in](http://www.fronius.in)

**Fronius (Thailand) Ltd.**  
Pinthong Industrial Estate I  
789/193 Moo 1, Sriracha,  
Chonburi 20230  
Building: P17/B1  
Thailand  
[sales.Thailand@fronius.com](mailto:sales.Thailand@fronius.com)  
[www.fronius.co.th](http://www.fronius.co.th)

**Fronius Middle East FZE**  
P.O. Box: 263241  
Jebel Ali / JAFZA ONE BUILDING  
Dubai / U.A.E  
Telephone +971 (0) 56 499 8224  
[contact.middleeast@fronius.com](mailto:contact.middleeast@fronius.com)  
[www.fronius.ae/pw](http://www.fronius.ae/pw)

**Fronius Canada Ltd.**  
2875 Argentia Road, Units 4,5 & 6  
Mississauga, ON L5N 8G6  
Canada  
Telephone +1 905 288-2100  
Fax +1 905 288-2101  
[sales.canada@fronius.com](mailto:sales.canada@fronius.com)  
[www.fronius.ca](http://www.fronius.ca)

**Fronius USA LLC**  
6797 Fronius Drive  
Portage, IN 46368  
USA  
Telephone +1 877 FRONIUS  
[sales.usa@fronius.com](mailto:sales.usa@fronius.com)  
[www.fronius-usa.com](http://www.fronius-usa.com)

**Fronius UK Limited**  
Maidstone Road, Kingston  
Milton Keynes, MK10 0BD  
United Kingdom  
Telephone +44 1908 512 300  
Fax +44 1908 512 329  
[info-uk@fronius.com](mailto:info-uk@fronius.com)  
[www.fronius.co.uk](http://www.fronius.co.uk)

**Fronius International GmbH**  
Froniusplatz 1  
4600 Wels  
Austria  
Telephone +43 7242 241-0  
Fax +43 7242 241-953940  
[sales@fronius.com](mailto:sales@fronius.com)  
[www.fronius.com](http://www.fronius.com)