

Classic Series

Auto-Darkening Welding Helmets

Quick Specs

Viewing Area

FS#10 Flip-Up: 5.07 sq. in. (32.71 sq. cm)
VS: 6 sq. in. (38.71 sq. cm)
VSi: 5.88 sq. in. (37.94 sq. cm)

Operating Modes

FS#10 Flip-Up: Weld and grind
VS: Weld, cut and grind
VSi: Weld, grind and X-Mode™
(FS#10 Flip-Up and VSi have integrated grind shields)

Shades

FS#10 Flip-Up: 10
VS: 5–8 (cut), 8–13 (weld)
VSi: 5–8 (cut), 8–13 (weld)

Sensors

FS#10 Flip-Up and VS: 2 VSi: 3

TIG Rating

FS#10 Flip-Up: 20 amps
VS and VSi: 5 amps and below

Switching Speed

FS#10 Flip-Up: 1/3,600 second
VS: 1/23,000 second
VSi: 1/20,000 second

Weight

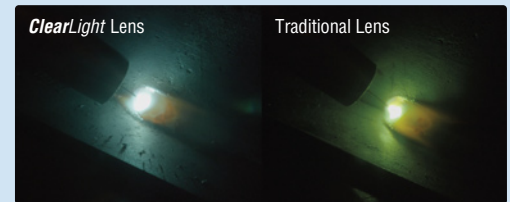
FS#10 Flip-Up: 14 oz. (396 g)
VS: 16 oz. (454 g)
VSi: 23 oz. (652 g)



Black (VS)
287803
shown.



Optional helmet lighting accessory kit includes two lights (one for each side) and all required mounting hardware.



ClearLight™ Lens Technology optimizes contrast and clarity in welding and light states. 1/1/1/2 optical clarity rating allows for a lighter light state while not welding — keeping the helmet down between welds while within arm's reach of the workpiece.

Independent arc sensors provide dependable arc detection.

VSi™ features X-Mode and three independent arc sensors for unsurpassed arc detection. X-Mode prevents sunlight from darkening the lens before welding starts and low-amperage lens opening from obstructed sensors.

VSi and FS#10 Flip-Up feature integrated grinding shields. Provides impact protection and a clear view for grinding.

Auto-on/off power control triggers lens at the strike of an arc.

Meets ANSI Z87.1+ and CSA standards.



Auto-darkening lens is warrantied for three years.



Miller Electric Mfg. LLC
An ITW Welding Company
1635 West Spencer Street
P.O. Box 1079
Appleton, WI 54912-1079 USA

Equipment Sales US and Canada
Phone: 866-931-9730
FAX: 800-637-2315
International Phone: 920-735-4554
International FAX: 920-735-4125

MillerWelds.com




Design Options



Metal Matrix™ (VS)
288519



Liberty™ (VS)
287820



Rise™ (VS)
287815



Metalworks™ (VS)
287810



Black (VS)
287803



FS#10 Flip-Up
287798



VSi™
287794

Ordering Information

Auto-Darkening Welding Helmets	Stock No.	Description	Qty.	Price
Classic Series		See above		
Consumables				
Battery, CR2450	217043	For VS and VSi		
Cover Lens, Inside/Outside	770237 / 770237B	5 pack or 50 pack (bulk). For FS#10 Flip-Up		
Cover Lens, Outside	231411 / 231411B	5 pack or 50 pack (bulk). For VS		
	235628	5 pack. For VSi		
Cover Lens, Inside	231410	5 pack. For VS and VSi		
Grinding Shield	261830	For FS#10 Flip-Up		
	245818	For VSi		
Grinding Shield Tear-Away	254278	5 pack. For VSi		
Replacement Parts/Accessories				
ClearLight™ Auto-Darkening Lens	287830	For FS#10 Flip-Up		
	287806	For VS		
	200541	For VSi		
Headgear	770246			
Helmet Bib	253882			
Slotted Hard Hat Adapter	259637	Compatible with most slotted hard hats		
Hard Hat Adapter	222003	Compatible with Fibre Metal and MSA hats		
Helmet Hook	251018			
Helmet Lighting Accessory Kit	282013			

Date:

Total Quoted Price:

Distributed by:

