



Automation Interface Kit No. 9-8311 For CutMaster True Series

Scope

This kit is for use only with the following Thermal Dynamics Plasma Cutting Systems:

Do not use this kit with any other equipment.

CutMaster 52,82,102,152

CutMaster 12mm,20mm,25mm,35mm, 40mm

CutMaster A40, A60,A80,A120

Supplied Parts

The kits include:

- Automation Interface Pcb 9-8388
- Wire Harness
- (2) #6-32x3/8 Pan Head Screws
- (2) M4x10mm Torx Head Screws
- Installation Instructions

Instructions



WARNINGS

Disconnect primary power at the source before performing any inspection or repairs.

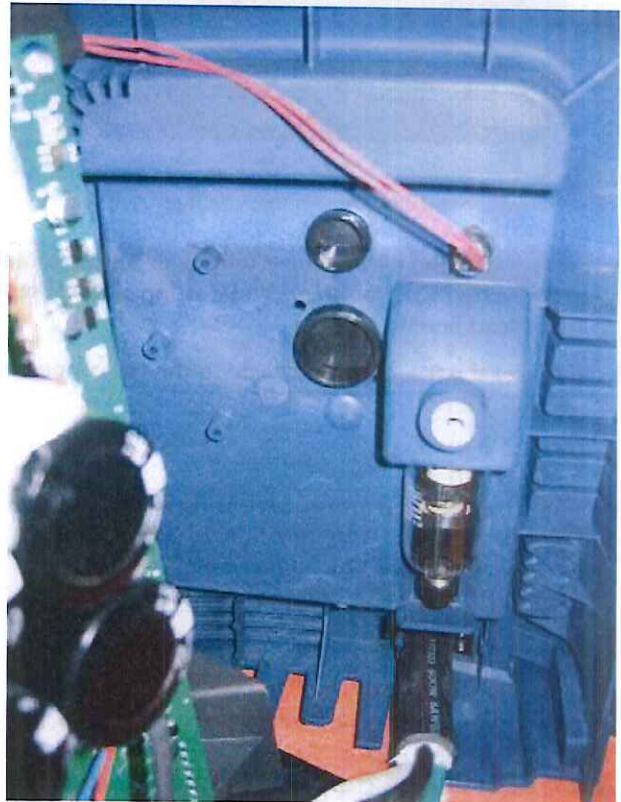
Only a qualified technician should perform this procedure.

Follow the electrostatic discharge instructions included with the component to prevent damage to the component.

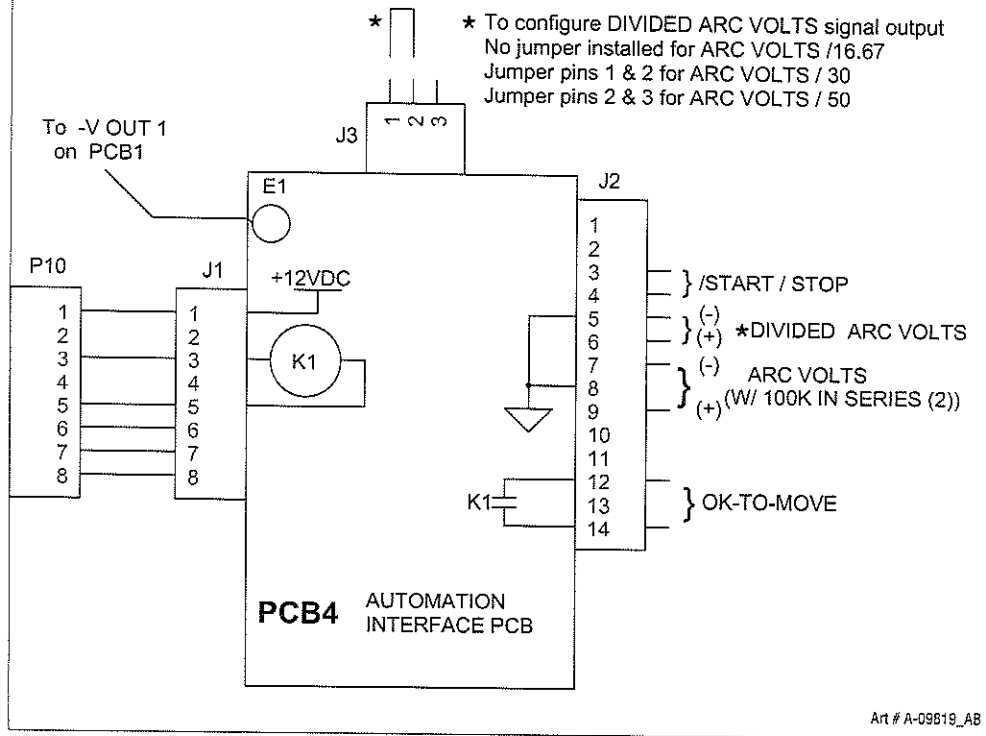
Installation Instructions

Installation Procedure

1. Remove the power supply cover.
2. Connect the supplied harness to the Automation Interface Pcb by attaching the Fast-on terminal onto the mating male terminal and the 8 socket receptacle onto the P2 connector.
3. Remove the lower hole plug from the rear panel.



FULL FEATURED AUTOMATION INTERFACE PCB OPTION



ANTI-STATIC PC BOARD HANDLING PROCEDURES

Replacement PC boards are shipped in a protective enclosure to prevent damage from electrostatic discharge (ESD) during shipping. Included with each replacement board is a ground strap to prevent static damage during installation.



WARNING

Read and understand these instructions and the instructions on the grounding wrist strap package before opening the power supply enclosure or removing the replacement PC board from its protective enclosure.



WARNING

Disconnect primary power to the system before disassembling the torch, torch leads, or power supply enclosure.



WARNING

Do not operate the power supply or test equipment under power while wearing the grounding wrist strap.

CAUTION

PC boards can be irreparably damaged by improper handling due to electrostatic discharge (ESD).

1. Open the wrist strap and unwrap the first two folds of the band. Wrap the adhesive side firmly around your wrist.
2. Unroll the rest of the band and peel the liner from the copper foil at the opposite end.
3. Attach the copper foil to a convenient and exposed electrical ground.
4. Connect the power supply primary cable ground to the same electrical ground as the wrist strap.
5. Open the power supply enclosure (see instruction manual for the power supply) and remove the failed PC board.
6. Carefully open the ESD protective bag and remove the replacement PC board.
7. Install the replacement PC board in the power supply and make all necessary connections.
8. Place the failed PC board in the ESD protective bag and seal for return shipping.
9. Reassemble the power supply enclosure (see instruction manual for the power supply).
10. Remove the grounding wrist strap from your wrist and from the electrical ground connection before reconnecting primary power to the power supply.