

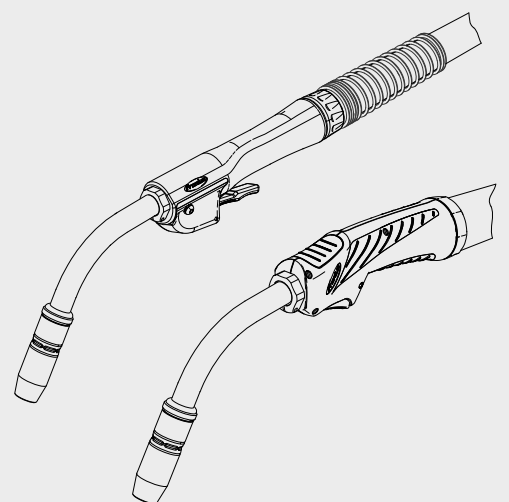


**MTG 320i US Style**  
**MTG 400i US Style**

Spare parts list

EN

MIG/MAG manual welding torch



42,0415,0474

003-28052019

# Spare parts list: MTG 320i/400i US-Style

## MIG Torch Gas - MTG FSC/EH

4,036,406	MTG320i US-Style FSC/EH/15'45°
4,036,407	MTG320i US-Style FSC/EH/15'60°
4,036,410	MTG320i US-Style FSC/EH/20'45°
4,036,411	MTG320i US-Style FSC/EH/20'60°
4,036,422	MTG400i US-Style FSC/EH/15'45°
4,036,423	MTG400i US-Style FSC/EH/15'60°
4,036,426	MTG400i US-Style FSC/EH/20'45°
4,036,427	MTG400i US-Style FSC/EH/20'60°

## MIG Torch Gas - MTG OC/EH

4,036,414	MTG320i US-Style OC/EH/15'45°
4,036,415	MTG320i US-Style OC/EH/15'60°
4,036,418	MTG320i US-Style OC/EH/20'45°
4,036,419	MTG320i US-Style OC/EH/20'60°
4,036,430	MTG400i US-Style OC/EH/15'45°
4,036,431	MTG400i US-Style OC/EH/15'60°
4,036,434	MTG400i US-Style OC/EH/20'45°
4,036,435	MTG400i US-Style OC/EH/20'60°

---

## MIG Torch Gas - MTG FSC/SH

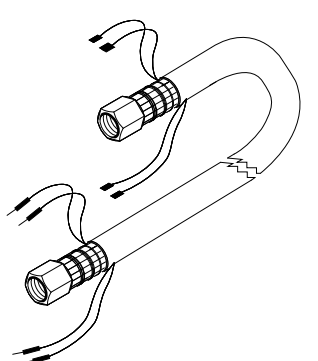
4,036,408	MTG320i US-Style FSC/SH/15'45°
4,036,409	MTG320i US-Style FSC/SH/15'60°
4,036,412	MTG320i US-Style FSC/SH/20'45°
4,036,413	MTG320i US-Style FSC/SH/20'60°
4,036,424	MTG400i US-Style FSC/SH/15'45°
4,036,425	MTG400i US-Style FSC/SH/15'60°
4,036,428	MTG400i US-Style FSC/SH/20'45°
4,036,429	MTG400i US-Style FSC/SH/20'60°

## MIG Torch Gas - MTG OC/SH

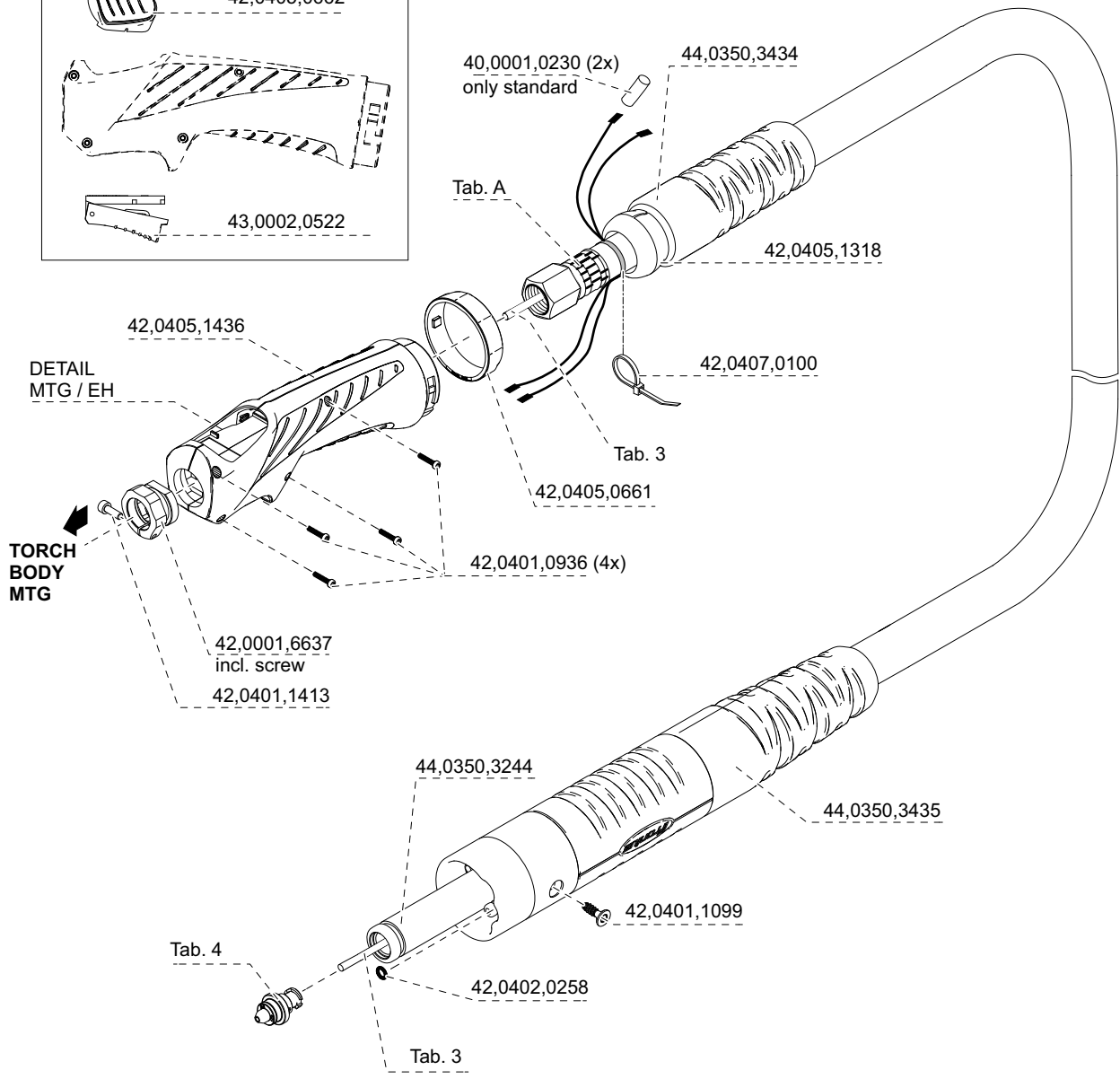
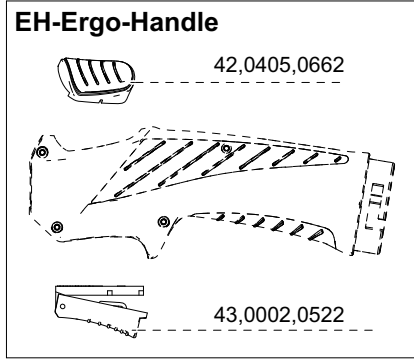
4,036,416	MTG320i US-Style OC/SH/15'45°
4,036,417	MTG320i US-Style OC/SH/15'60°
4,036,420	MTG320i US-Style OC/SH/20'45°
4,036,421	MTG320i US-Style OC/SH/20'60°
4,036,432	MTG400i US-Style OC/SH/15'45°
4,036,433	MTG400i US-Style OC/SH/15'60°
4,036,436	MTG400i US-Style OC/SH/20'45°
4,036,437	MTG400i US-Style OC/SH/20'60°

**MTG - FSC/EH**

TAB. A		
43,0004,5247	15' (4,5m)	MTG 320i US-Style
43,0004,5761	20' (6,0m)	MTG 320i US-Style
-----		
43,0004,4438	15' (4,5m)	MTG 400i US-Style
43,0004,5762	20' (6,0m)	MTG 400i US-Style



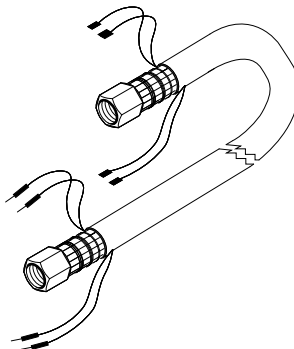
**MTG-EH**



**MTG - OC/EH**

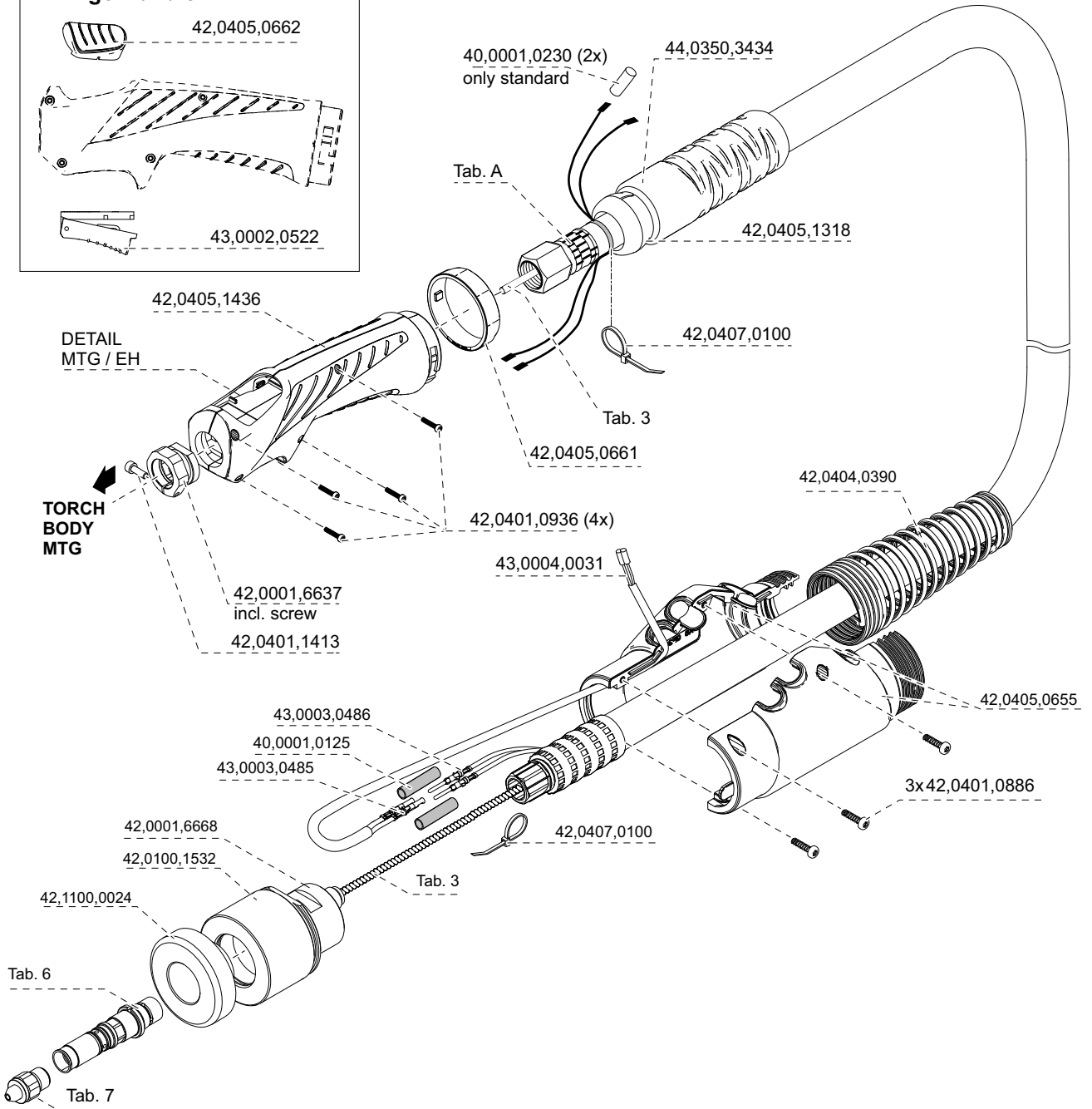
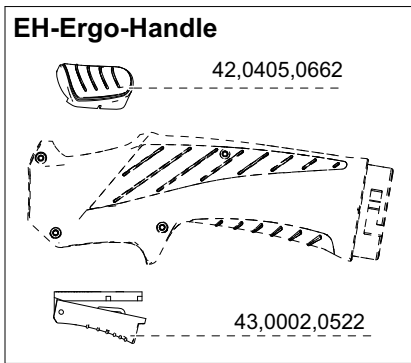
**TAB. A**

43,0004,6051	15' (4,5m)	MTG 320i US-Style
43,0004,6052	20' (6,0m)	MTG 320i US-Style
43,0004,6054	15' (4,5m)	MTG 400i US-Style
43,0004,6055	20' (6,0m)	MTG 400i US-Style



**MTG-EH**

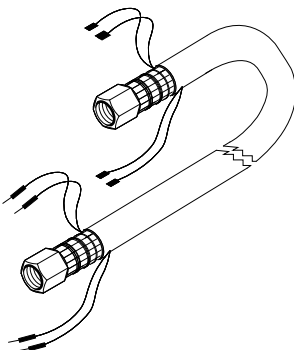
**EH-Ergo-Handle**



**MTG - FSC/SH**

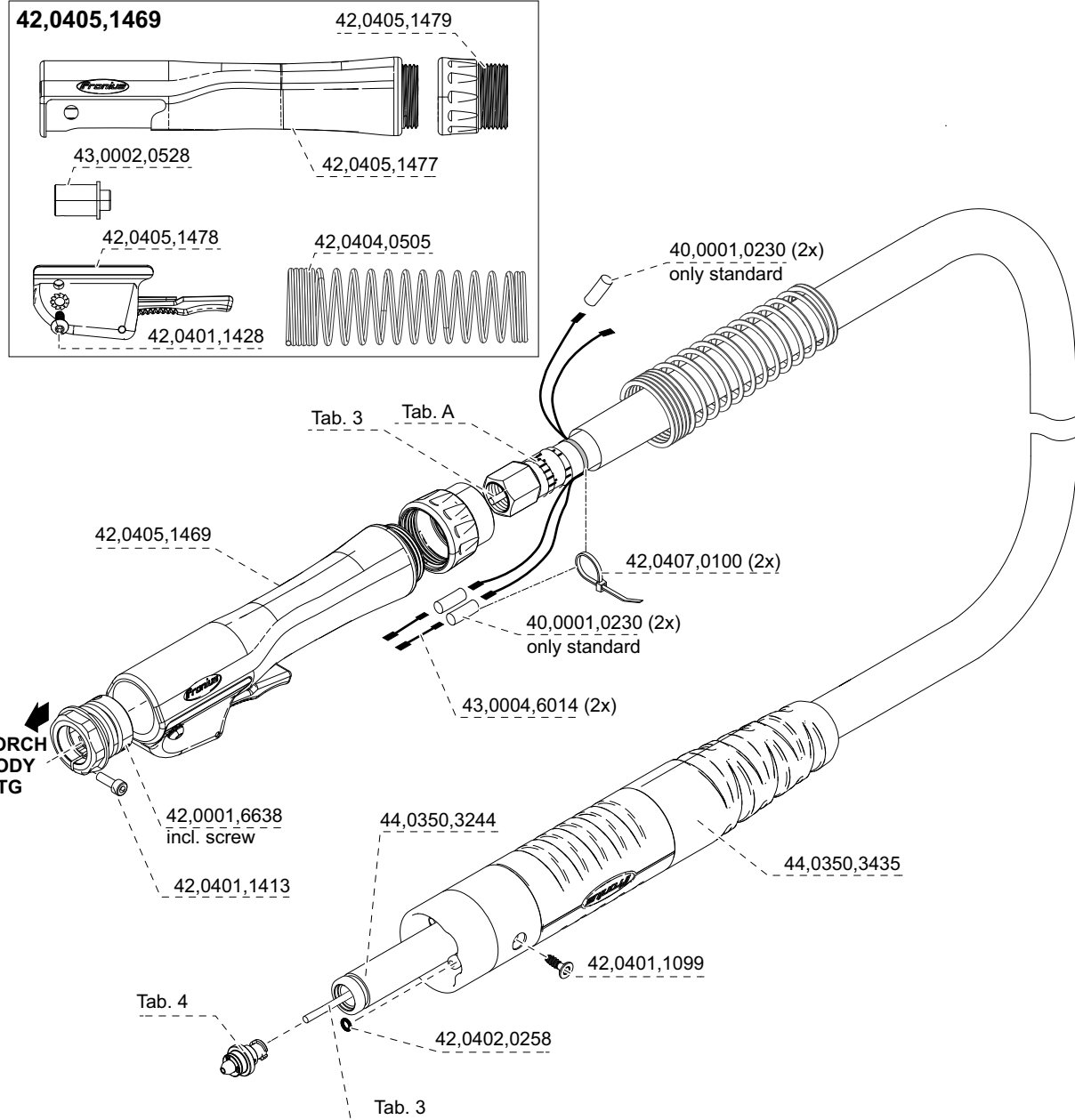
**TAB. A**

43,0004,5247	15'(4,5m)	MTG 320i US-Style
43,0004,5761	20'(6,0m)	MTG 320i US-Style
43,0004,4438	15'(4,5m)	MTG 400i US-Style
43,0004,5762	20'(6,0m)	MTG 400i US-Style



**MTG-Straight-Handle**

**42,0405,1469**



42,0405,1479

43,0002,0528

42,0405,1477

42,0405,1478

42,0404,0505

42,0401,1428

40,0001,0230 (2x)  
only standard

42,0405,1469

42,0407,0100 (2x)

40,0001,0230 (2x)  
only standard

43,0004,6014 (2x)

TORCH BODY  
MTG

42,0001,6638  
incl. screw

42,0401,1413

44,0350,3244

44,0350,3435

42,0401,1099

42,0402,0258

Tab. 3

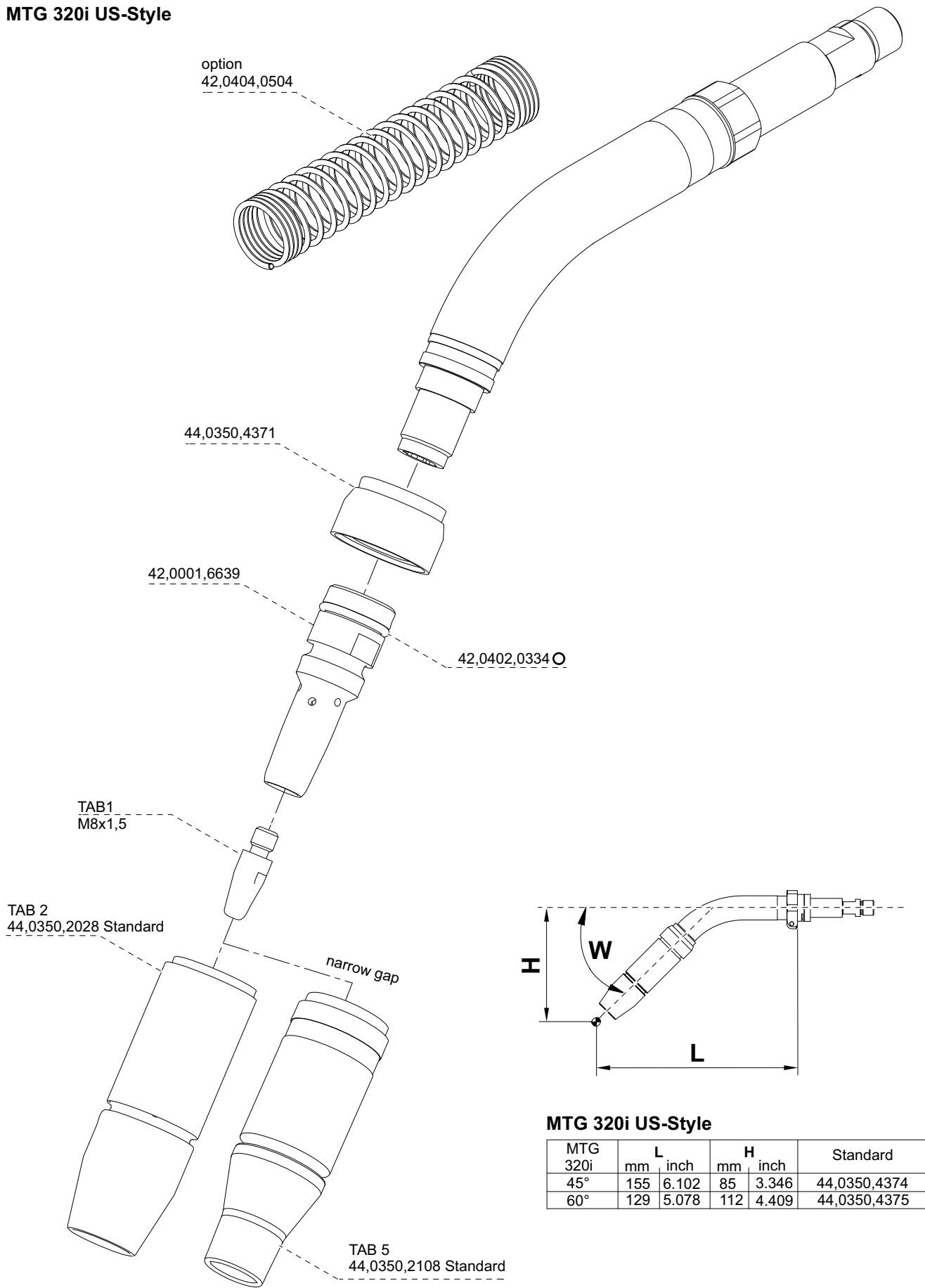
Tab. A

Tab. 4

Tab. 3



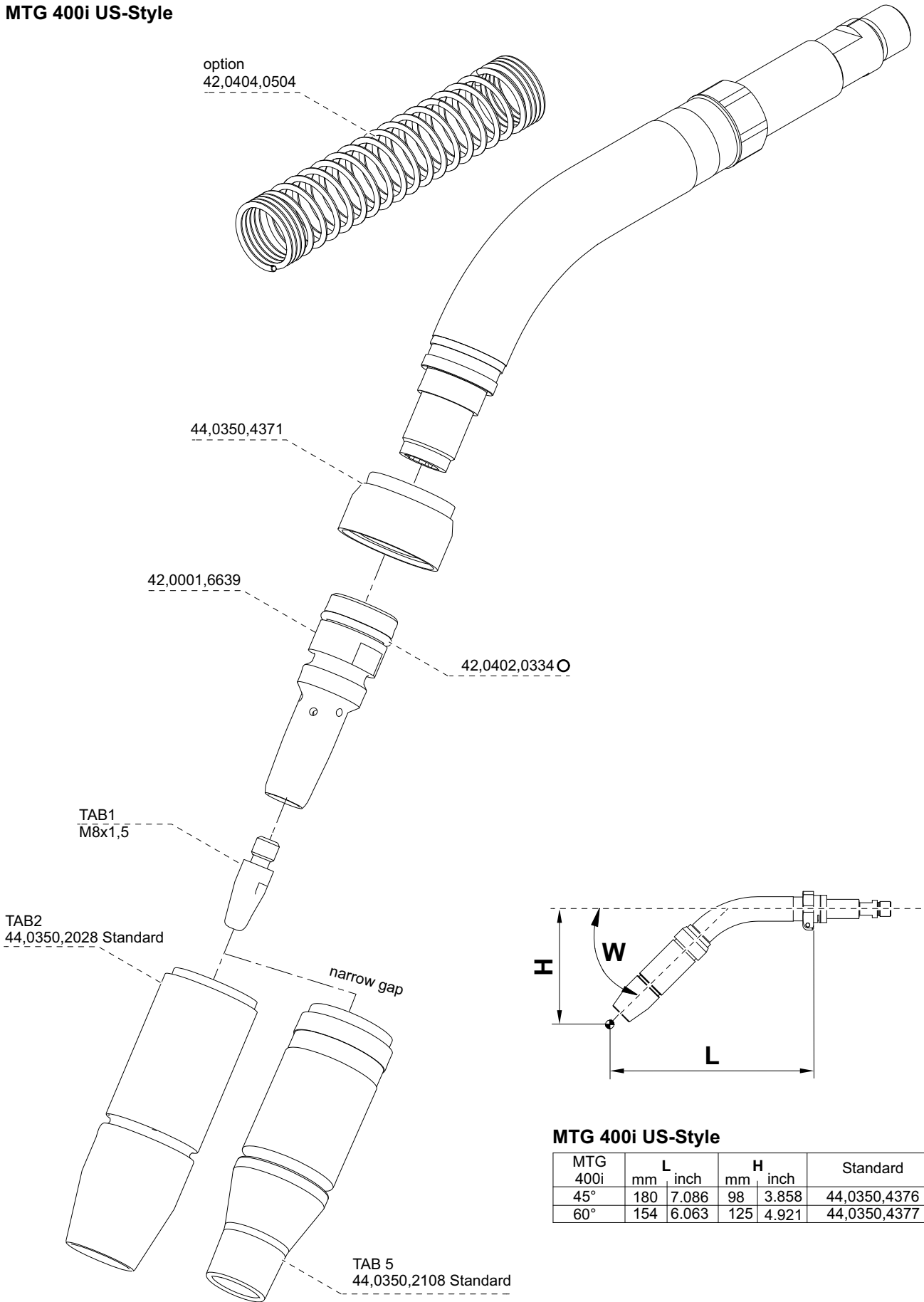
**MTG 320i US-Style**



**MTG 320i US-Style**

MTG 320i	mm	L inch	mm	H inch	Standard
45°	155	6.102	85	3.346	44,0350,4374
60°	129	5.078	112	4.409	44,0350,4375

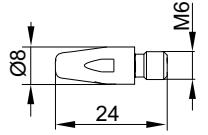
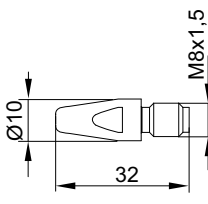
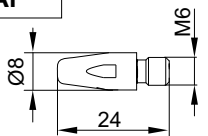
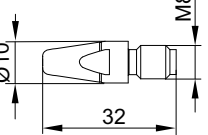
**MTG 400i US-Style**

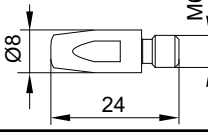
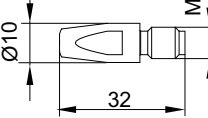


**MTG 400i US-Style**

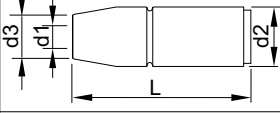
MTG 400i	mm	L inch	mm	H inch	Standard
45°	180	7.086	98	3.858	44,0350,4376
60°	154	6.063	125	4.921	44,0350,4377




TAB. 1 <b>CuCrZr</b>		$\varnothing$ mm	$\varnothing$ inch	Part No.
	0,6	0,023	42,0001,4928	
	0,7	0.027	42,0001,6524,10	
	0,8	0.030	42,0001,4461,10	
	0,9	0.035	42,0001,4462,10	
	1,0	0.040	42,0001,4463,10	
	1,1	0.043	42,0001,6527,10	
	1,2	0.045	42,0001,4464,10	
	1,3	0.051	42,0001,6529,10	
	1,4	0.052	42,0001,4465,10	
	1,5	0.059	42,0001,6522,10	
1,6	0.062	42,0001,4466,10		
	0,7	0.027	42,0001,6482,10	
	0,8	0.030	42,0001,6464,10	
	0,9	0.035	42,0001,6465,10	
	1,0	0.040	42,0001,6466,10	
	1,1	0.043	42,0001,6483,10	
	1,2	0.045	42,0001,6467,10	
	1,3	0.051	42,0001,6484,10	
	1,4	0.052	42,0001,6468,10	
	1,5	0.059	42,0001,6485,10	
	1,6	0.062	42,0001,6469,10	
<b>Al</b> 	0,8	0.030	42,0001,6525,10	
	1,0	0.040	42,0001,6526,10	
	1,2	0.045	42,0001,6528,10	
	1,6	0.062	42,0001,6523,10	
<b>Al</b> 	0,8	0.030	42,0001,6537,10	
	1,0	0.040	42,0001,4750,10	
	1,2	0.045	42,0001,4751,10	
	1,6	0.062	42,0001,4752,10	

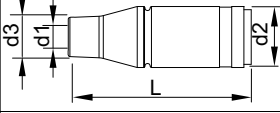
TAB. 1 <b>E-Cu</b>		$\varnothing$ mm	$\varnothing$ inch	Part No.
	0,9	0.035	42,0001,7025,10	
	1,0	0.040	42,0001,7026,10	
	1,2	0.045	42,0001,7027,10	
	0,9	0.035	42,0001,7028,10	
	1,0	0.040	42,0001,7029,10	
	1,2	0.045	42,0001,7030,10	


**TAB. 2**



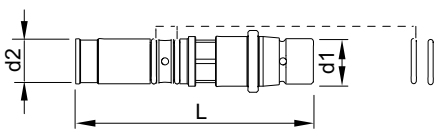
M18x3	d1		d2		d3		L		Part No.		standard
	mm	inch	mm	inch	mm	inch	mm	inch			
	15	0.59	ø25	0.98	18.5	0.73	75	2.95	44,0350,2028		
	15	0.59	ø27	1.06	20.5	0.81	77	3.03	44,0350,2030		

**TAB. 5**



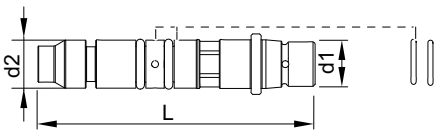
M18x3	d1		d2		d3		L		Part No.		standard
	mm	inch	mm	inch	mm	inch	mm	inch			
	13	0.51	ø25	0.98	16	0.63	75	2.95	44,0350,2108		

**TAB. 6**



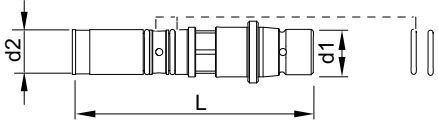
**suitable for Lincoln**

d1		d2		L		Part No.	O-ring No. (2pc.)
mm	inch	mm	inch	mm	inch		
M16x1,5	0.63x0.059	15,81	0.62	83,8	3.3	42,1000,0000	42,0402,0221



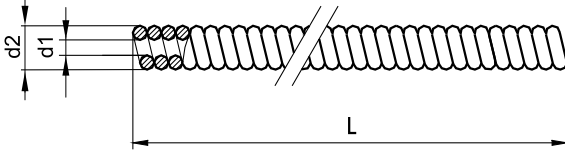
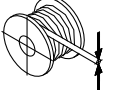
**suitable for Miller**

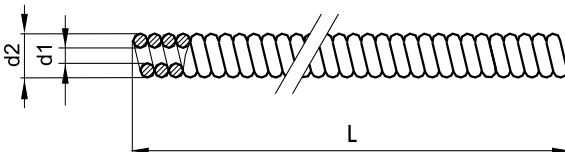
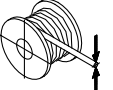
d1		d2		L		Part No.	O-ring No. (2pc.)
mm	inch	mm	inch	mm	inch		
M16x1,5	0.63x0.059	17,3	0.68	99,8	3.93	42,1000,0001	42,0300,0097

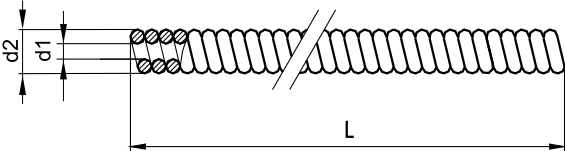
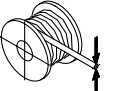


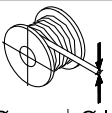


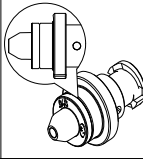
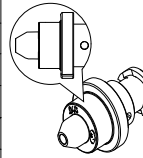

**suitable for Hobart**

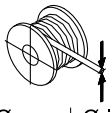
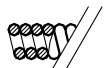
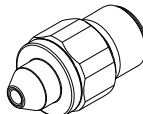
d1		d2		L		Part No.	O-ring No. (2pc.)
mm	inch	mm	inch	mm	inch		
M16x1,5	0.63x0.059	15,8	0.62	85	3.35	42,1000,0002	42,0402,0221

<b>Tab. 3</b>													
<b>STEEL MTG/MTW</b>													
		<b>Fe</b>		<b>d1</b>		<b>d2</b>		<b>Part No.</b>		<b>Part No.</b>		<b>Part No.</b>	
$\varnothing$ mm	$\varnothing$ inch	mm	inch	mm	inch	<b>L</b>		<b>L</b>		<b>L</b>		<b>L</b>	
						5m	16.4feet	15m	49.2feet	50m	160feet		
0,8	.030	1,4	.055	4,4	.176	40,0002,0040,005		40,0002,0040,015		40,0002,0040,050			
0,9-1,0	.035-.040	1,6	.062	4,8	.189	40,0002,0041,005		40,0002,0041,015		40,0002,0041,050			
1,2	.045	1,9	.074	4,9	.192	40,0002,0042,005		40,0002,0042,015		40,0002,0042,050			
1,4-1,6	.052-1/16	2,5	.098	4,9	.192	40,0002,0043,005		40,0002,0043,015		40,0002,0043,050			

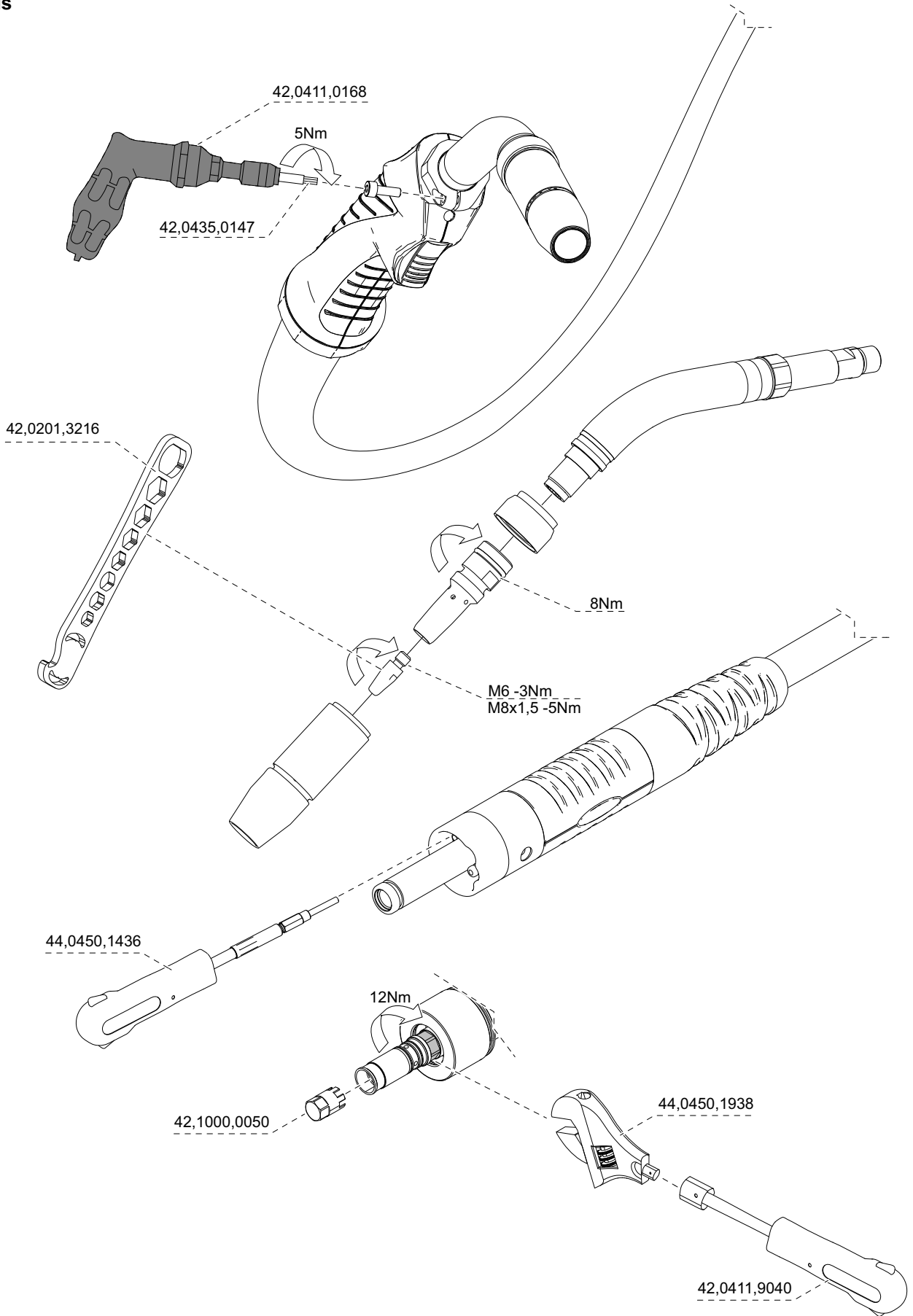
<b>Tab. 3</b>													
<b>CrNi MTG/MTW</b>													
		<b>CrNi</b>		<b>d1</b>		<b>d2</b>		<b>Part No.</b>		<b>Part No.</b>		<b>Part No.</b>	
$\varnothing$ mm	$\varnothing$ inch	mm	inch	mm	inch	<b>L</b>		<b>L</b>		<b>L</b>		<b>L</b>	
						5m	16.4feet	15m	49.2feet	50m	160feet		
0,8	.030	1,4	.055	4,4	.176	40,0002,0044,005		40,0002,0044,015		40,0002,0044,050			
0,9-1,0	.035-.040	1,6	.062	4,8	.189	40,0002,0045,005		40,0002,0045,015		40,0002,0045,050			
1,2	.045	1,9	.074	4,9	.192	40,0002,0046,005		40,0002,0046,015		40,0002,0046,050			
1,4-1,6	.052-1/16	2,5	.098	4,9	.192	40,0002,0047,005		40,0002,0047,015		40,0002,0047,050			

<b>Tab. 3</b>													
<b>STEEL coated MTG/MTW</b>													
		<b>universal</b>		<b>d1</b>		<b>d2</b>		<b>Part No.</b>		<b>Part No.</b>		<b>Part No.</b>	
$\varnothing$ mm	$\varnothing$ inch	mm	inch	mm	inch	<b>L</b>		<b>L</b>		<b>L</b>		<b>L</b>	
						5m	16.4feet	15m	49.2feet	50m	160feet		
0,8	.030	1,4	.055	4,4	.176	40,0002,0052,005		40,0002,0052,015		40,0002,0052,050			
0,9-1,0	.035-.040	1,6	.062	4,8	.189	40,0002,0053,005		40,0002,0053,015		40,0002,0053,050			
1,2	.045	1,9	.074	4,9	.192	40,0002,0054,005		40,0002,0054,015		40,0002,0054,050			
1,4-1,6	.052-1/16	2,5	.098	4,9	.192	40,0002,0055,005		40,0002,0055,015		40,0002,0055,050			

<b>Tab. 4</b>					
<b>FSC</b>					
 Ø mm   Ø inch		 <b>Fe / CrNi Universal</b>	 <b>Alu / CuSi Graphit / Combi</b>	colour	
0,8	.031		44,0350,3314	grey	
0,8	.031	44,0350,3315		grey	
0,9/1,0	.039	44,0350,3317		blue	
1,2	.047	44,0350,3318		red	
1,4/1,6	.062	44,0350,3320		black	
2,0	.078		44,0350,3321	green	
2,4	.095		44,0350,4245	brown	
2,0	.078	42,0001,4589			 only stuck
2,4	.095				
2,8	.110				

<b>Tab. 7</b>					
<b>oc</b>					
 Ø mm   Ø inch		 <b>Fe / CrNi Universal</b>		colour	
0,8	.031	44,0350,3703		grey	
1,0	.040	44,0350,3704		blue	
1,2	.045	44,0350,3705		red	
1,6	1/16	44,0350,3706		black	

**Tools**







**FRONIUS INTERNATIONAL GMBH**

Vorchdorfer Straße 40, A-4643 Pettenbach, Austria

E-Mail: [sales@fronius.com](mailto:sales@fronius.com)

[www.fronius.com](http://www.fronius.com)

Under [www.fronius.com/contact](http://www.fronius.com/contact) you will find the addresses  
of all Fronius Sales & Service Partners and locations