

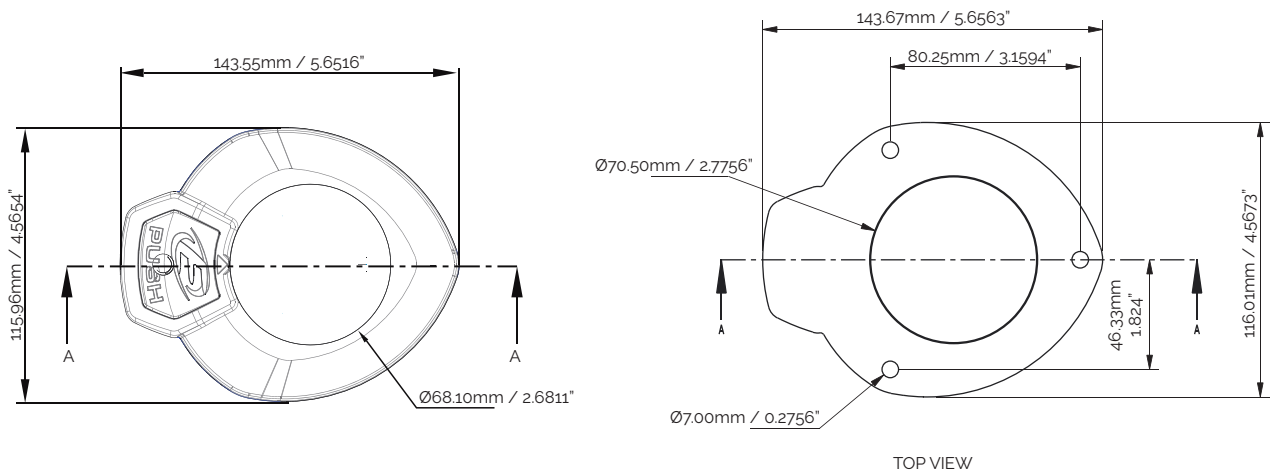


The all new Streamline Series rotating rod holders are more than an evolution, they completely revolutionise the conventional rod holder that binds you to a fixed position with no ability to adapt to environmental factors that can affect your rod and reel at any time while fishing inshore or offshore.

These are the 30-degree, 15-degree, and 0-degree models, the Streamline 360 are a mirror polished full 316 stainless steel rod holder rated to 60kg/135lb tackle, they cover most general fishing needs for a regular straight stock rod and curve stock rod to allow the fine tuning of a position for trolling under outriggers or live bait, and bottom fishing or even kite fishing, the advantages are endless.

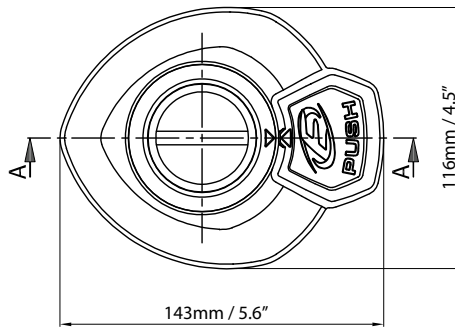
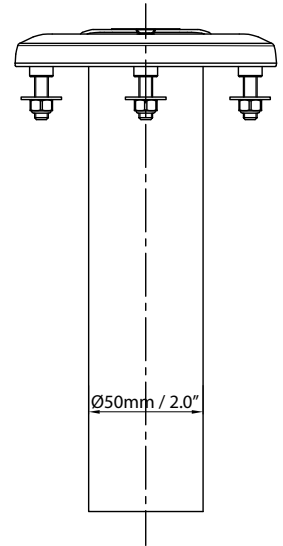
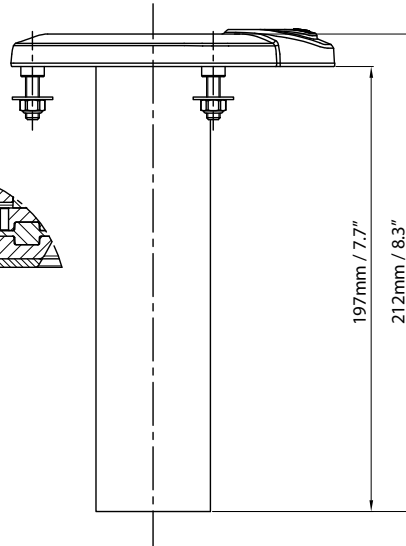
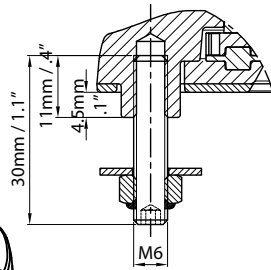
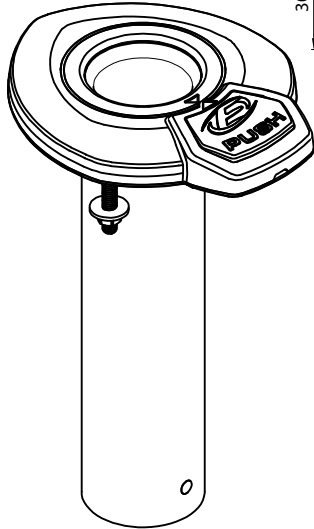
Adjust your rod position for wind, current, wave and tide conditions at anchor or drifting.

Built from the highest quality material they come with a 5 year Manufacturers warranty.



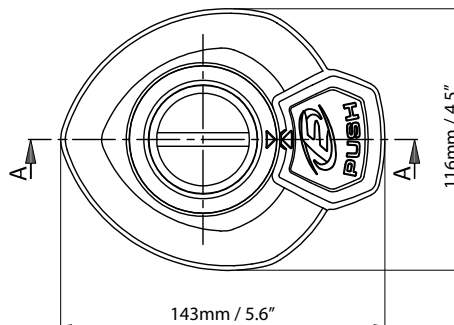
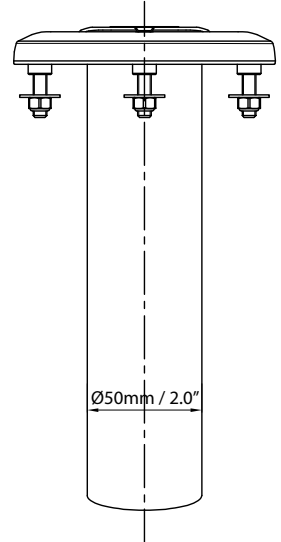
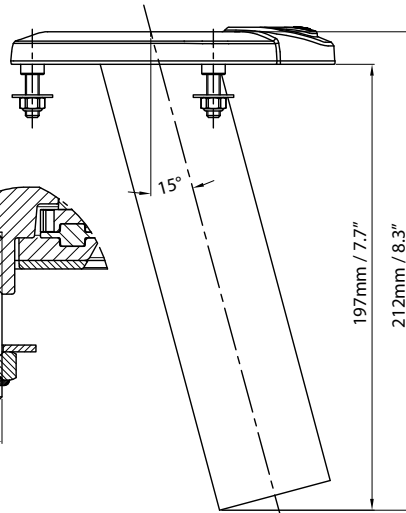
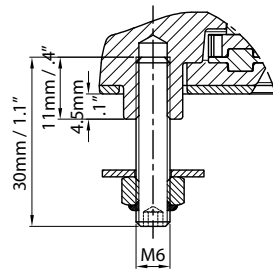
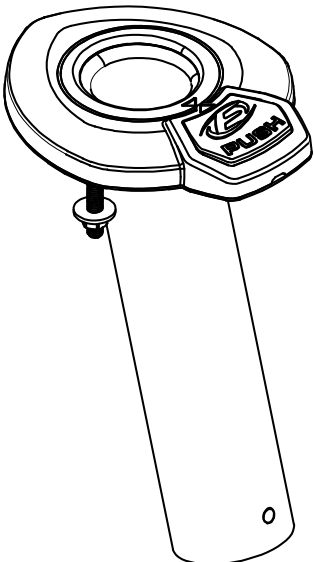
Streamline 360

ROTATING ROD HOLDER 0-DEGREE



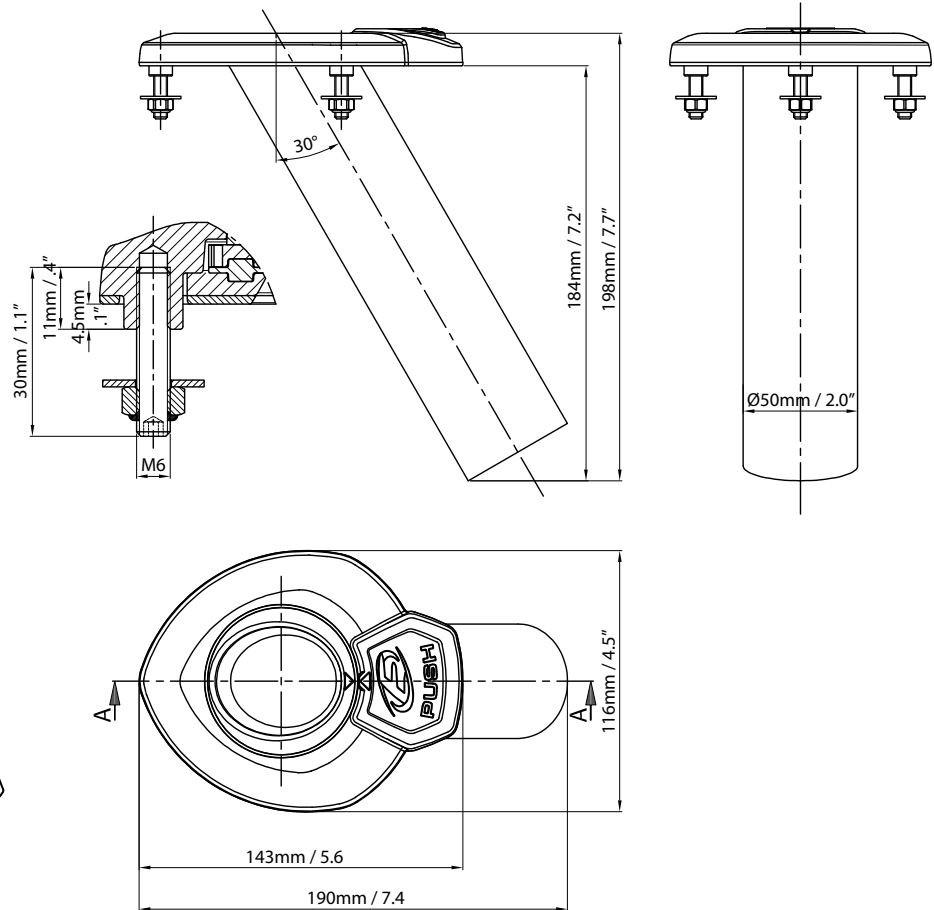
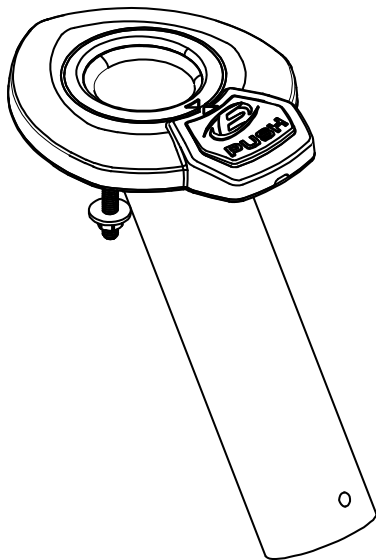
Streamline 360

ROTATING ROD HOLDER 15-DEGREE



Streamline 360

ROTATING ROD HOLDER 30-DEGREE



INSTALLATION INSTRUCTIONS

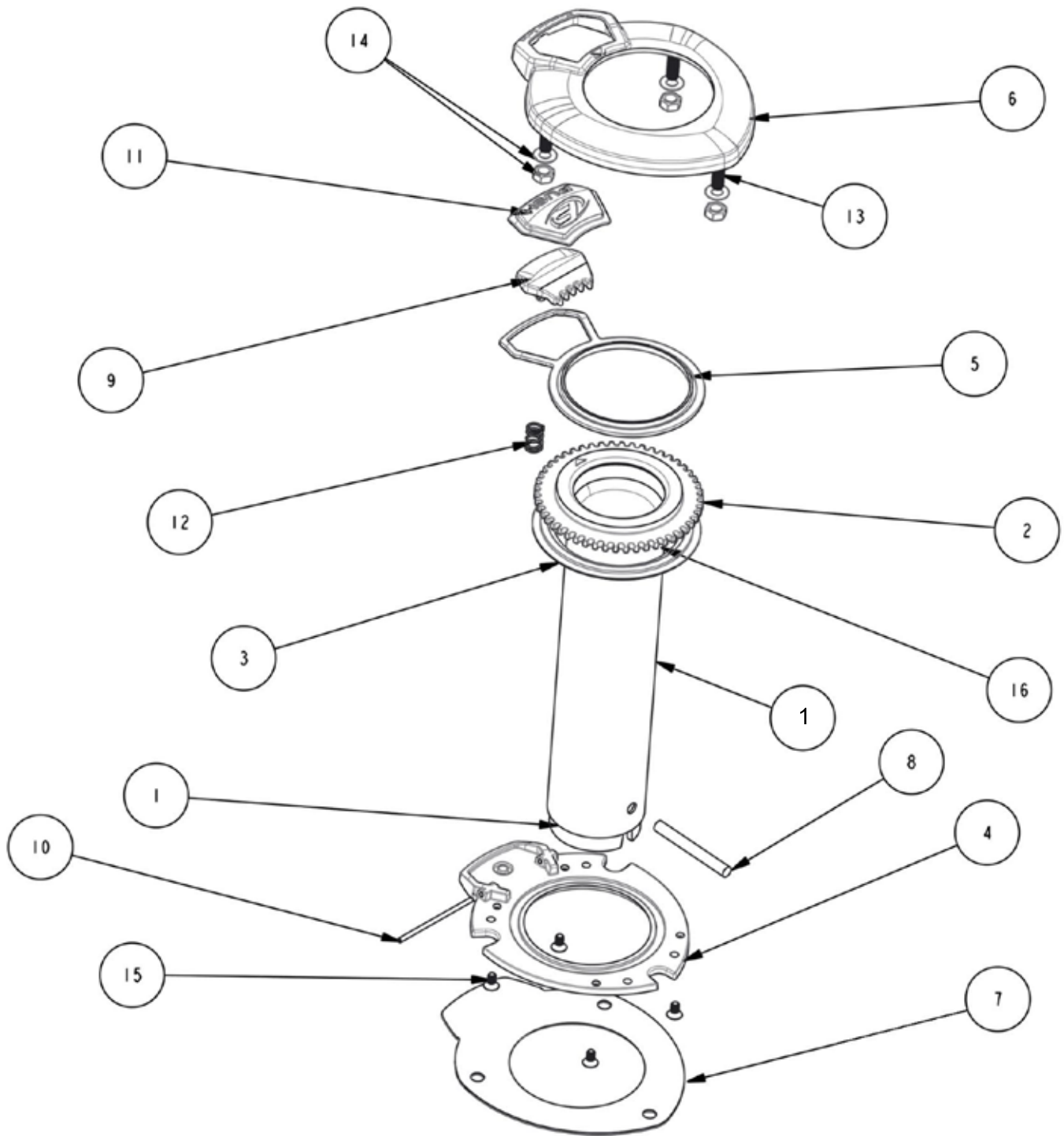
Provided with your Streamline 360 rotating rod holder is an actual size template for ease of positioning your rod holder in the desired location. Depending on the width of your Gunwale and the position of the rod holder being Port, Starboard or on the stern of your craft you need to take into consideration of the amount of rotation you seek in the location of the rod holder.

We recommended you take the time to inspect under the Gunwale for any interference or obstructions that may be present, if properly positioned, be it a retro fit or a fresh install on the Port or Starboard sides of your craft you will all ways acheive a rotation area of at least a minimum 180-degree to the fishing zone with more rotation possible with a wider Gunwale, in the stern of the craft similar conditions apply in positioning for maximum rotation around the fishing zone.

Obviously there will be a difference in the function and rotation depending on your choice of the rod holder be it 30-15-0-degree configuration and tube length.

Please observe the rotation charts for central hole diameters and Gunwale thickness to allow free rotation.

MATERIALS SELECTION STREAMLINE



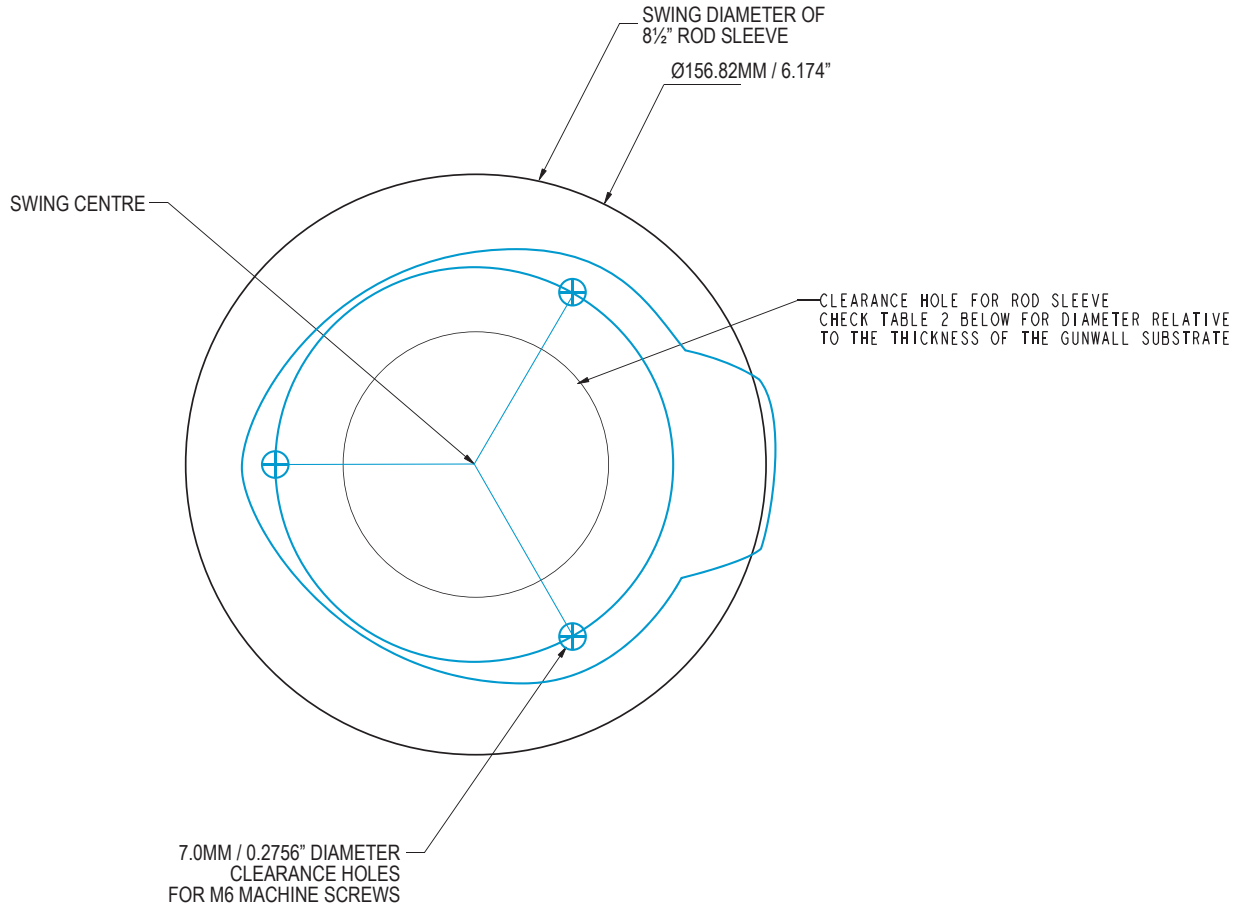


1. ROD SLEEVE: ROLLED AND POLISHED, SEAMLESS 316 STAINLESS STEEL
2. GEAR HEAD: PRECISION CAST, STAMPED, MACHINED AND POLISHED 316 STAINLESS STEEL. PRECISION TIG WELDED TO THE ROD SLEEVE WITH AN ULTRA STRONG DEEP PENETRATION WELD
3. BOTTOM BEARING: INJECTION MOULDED ULTRA HIGH MOLECULAR WEIGHT POLYETHYLENE FOR ULTRA HIGH WEAR, CHEMICAL, COMPRESSION AND SHEER RESISTANCE
4. BASE PLATE: PRECISION CAST, STAMPED, MACHINED AND POLISHED 316 STAINLESS STEEL
5. TOP BEARING: INJECTION MOULDED ULTRA HIGH MOLECULAR WEIGHT POLYETHYLENE FOR ULTRA HIGH WEAR, CHEMICAL, COMPRESSION AND SHEER RESISTANCE
6. TOP COVER: PRECISION CAST, MACHINED AND POLISHED 316 STAINLESS STEEL.
7. GASKET: RESILIENT RUBBER BLEND, DESIGNED SPECIFICALLY TO BE VERY TOUGH AND WEAR RESISTANT AND RESIST ATTACK FROM CHEMICALS AND UV
8. GIMBLE PIN: PRECISION ROLLED AND POLISHED 316 STAINLESS STEEL. TIG WELDED TO THE ROD SLEEVE WITH AN ULTRA STRONG DEEP PENETRATION WELD
9. LOCKING LEVER: PRECISION CAST, MACHINED AND POLISHED 316 STAINLESS STEEL
10. PIVOT PIN: PRECISION ROLLED AND POLISHED 316 STAINLESS STEEL
11. LOCKING LEVER COVER: RESILIENT RUBBER BLEND, DESIGNED SPECIFICALLY TO BE VERY TOUGH AND WEAR RESISTANT AND RESIST ATTACK FROM CHEMICALS AND UV
12. SPRING: TEMPERED 304 SPRING STAINLESS STEEL
13. M6 QUALITY 316 STAINLESS STEEL STUD
14. M6 QUALITY 316 STAINLESS STEEL NUT AND WASHER
15. M X 7.5MM 316 STAINLESS STEEL PHILIPS DRIVE, COUNTERSUNK SCREW, NUT AND WASHER
16. SLEEVE GUIDE: RESILIENT RUBBER BLEND, DESIGNED SPECIFICALLY TO BE VERY TOUGH AND WEAR RESISTANT AND RESIST ATTACK FROM CHEMICALS AND UV



ROTATION GRAPH AND MEASUREMENTS FOR THE 8½” TUBE MODEL

Rotation guide 15 Degree Streamline Series



HOLE SIZES TO ALLOW FOR ROD SLEEVE SWING (15 DEGREE)	
GUNWALL THICKNESS	CLEARANCE HOLE DIAMETER
0.0787 inches	2.4409 inches
0.1575 inches	2.4803 inches
0.2362 inches	2.5197 inches
0.315 inches	2.5591 inches
0.3937 inches	2.5984 inches
0.4724 inches	2.6378 inches
0.5512 inches	2.6772 inches
0.6299 inches	2.7165 inches
0.7087 inches	2.7559 inches
0.7874 inches	2.7953 inches
0.8661 inches	2.8346 inches
0.9449 inches	2.874 inches
1.0236 inches	2.9134 inches
1.1024 inches	2.9921 inches
1.1811 inches	3.0315 inches
1.5748 inches	3.2283 inches
1.9685 inches	3.4252 inches
NOTE: GUNWALL THICKNESS ABOVE 1.9685 INCHES WILL REQUIRE A 15 DEGREE CHAMFER RELIEF	

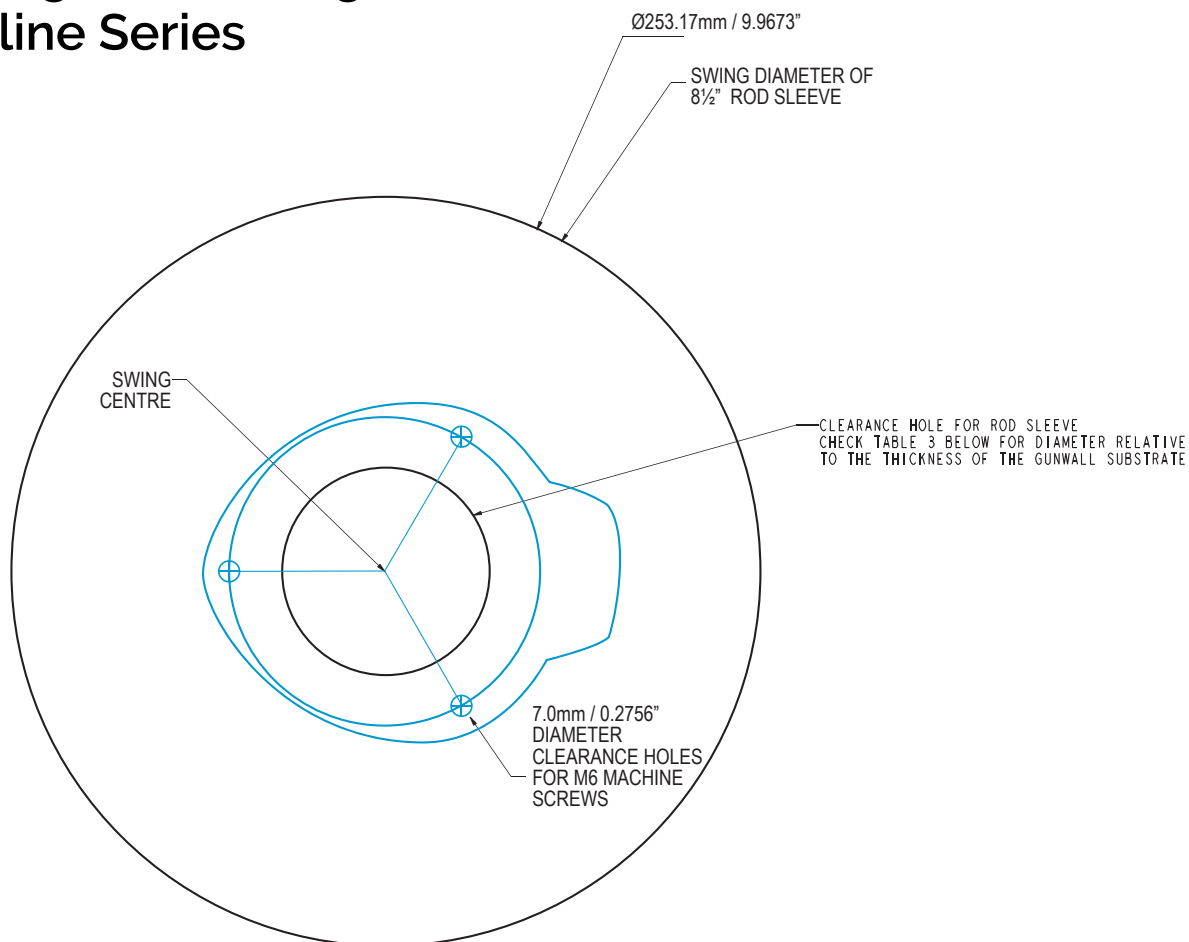
TABLE 2

HOLE SIZES TO ALLOW FOR ROD SLEEVE SWING (15 DEGREE)	
GUNWALL THICKNESS	CLEARANCE HOLE DIAMETER
2.0 MM	62.0 MM
4.0 MM	63.0 MM
6.0 MM	64.0 MM
8.0 MM	65.0 MM
10.0 MM	66.0 MM
12.0 MM	67.0 MM
14.0 MM	68.0 MM
16.0 MM	69.0 MM
18.0 MM	70.0 MM
20.0 MM	71.0 MM
22.0 MM	72.0 MM
24.0 MM	73.0 MM
26.0 MM	74.0 MM
28.0 MM	76.0 MM
30.0 MM	77.0 MM
40.0 MM	82.0 MM
50.0 MM	87.0 MM
NOTE: GUNWALL THICKNESSES ABOVE 50.0 MM WILL REQUIRE A 15 DEGREE CHAMFER RELIEF	

TABLE 2

ROTATION GRAPH AND MEASUREMENTS FOR THE 8½" TUBE MODEL

Rotation guide 30 Degree Streamline Series



HOLE SIZES TO ALLOW FOR ROD SLEEVE SWING (30 DEGREE)	
GUNWALL THICKNESS	CLEARANCE HOLE DIAMETER
0.0787 inches	2.9528 inches
0.1575 inches	3.0315 inches
0.2362 inches	3.1496 inches
0.315 inches	3.2283 inches
0.3937 inches	3.3465 inches
0.4724 inches	3.4252 inches
NOTE: GUNWALL THICKNESS ABOVE 0.4724 INCHES WILL REQUIRE A 30 DEGREE CHAMFER RELIEF	

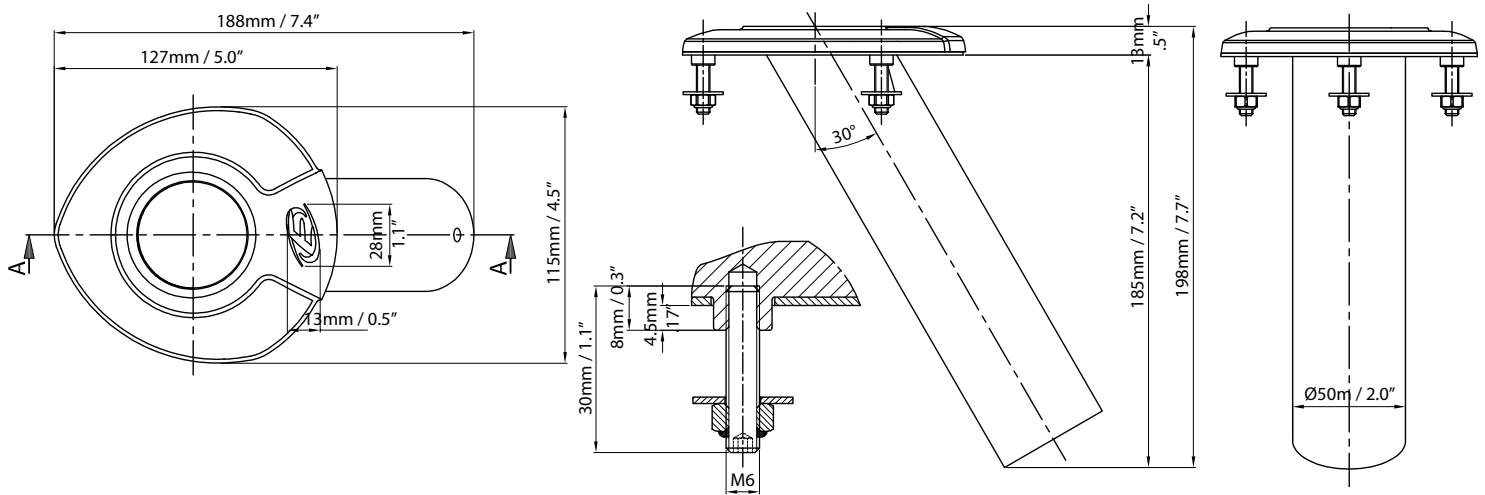
TABLE 3

HOLE SIZES TO ALLOW FOR ROD SLEEVE SWING (30 DEGREE)	
GUNWALL THICKNESS	CLEARANCE HOLE DIAMETER
2.0 MM	75.0 MM
4.0 MM	77.0 MM
6.0 MM	80.0 MM
8.0 MM	82.0 MM
10.0 MM	85.0 MM
12.0 MM	87.0 MM
NOTE: GUNWALL THICKNESSES ABOVE 12.0MM WILL REQUIRE A 30 DEGREE CHAMFER RELIEF	

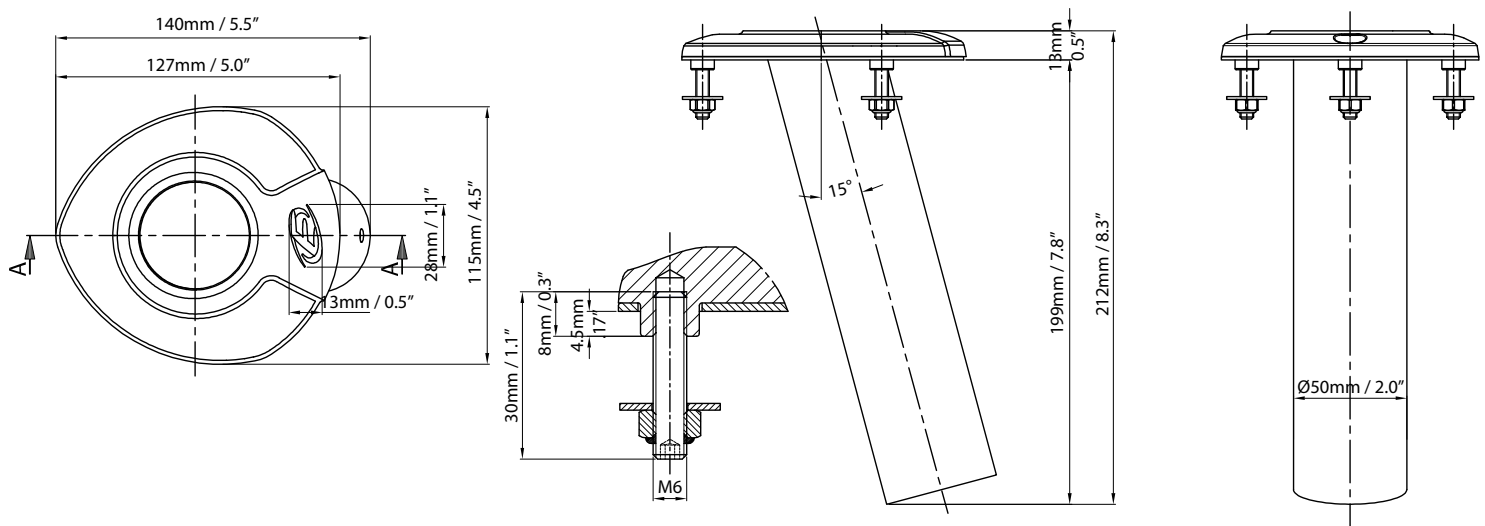
TABLE 3



Streamline FX- FIXED ROD HOLDER 30 DEGREE



Streamline FX- FIXED ROD HOLDER 15 DEGREE



Streamline FX- FIXED ROD HOLDER 0 DEGREE

