

# 1993-1998 ZJ FRONT BUMPER INSTALLATION

Thank you for choosing D.TillFabworks for your aftermarket needs, if you have questions throughout the install just send us an email at [admin@dtillfabworks.com](mailto:admin@dtillfabworks.com) or give us a call at (813) 575-2525.

## Tools required:

- Drill
- General socket set
- Angle grinder
- General drill bit set
- Tape measure
- Masking tape
- Marker

## Hardware included:

- (16x) 3/8" – 16, 7/8" long hex head screw
- (8x) 3/8" – 16, nylon locking hex nut
- (24x) SAE 3/8" washer

## Install:

- Place the Jeep on level ground, remove the OEM bumper cover to begin.



- Remove the factory tow hooks if equipped.

- Place a strip of masking tape over the overhanging portion of the frame rail as shown.



- Measure  $\frac{1}{2}$ " over and scribe a line down the front of the frame face. The goal with this cut is to make it flush with the inside of the frame rail, it is best to be conservative with the amount cut and come back with a flap wheel and clean up what is left.



- Slide the bumper into the frame, use the existing holes on the side of the frame to locate the bumper.

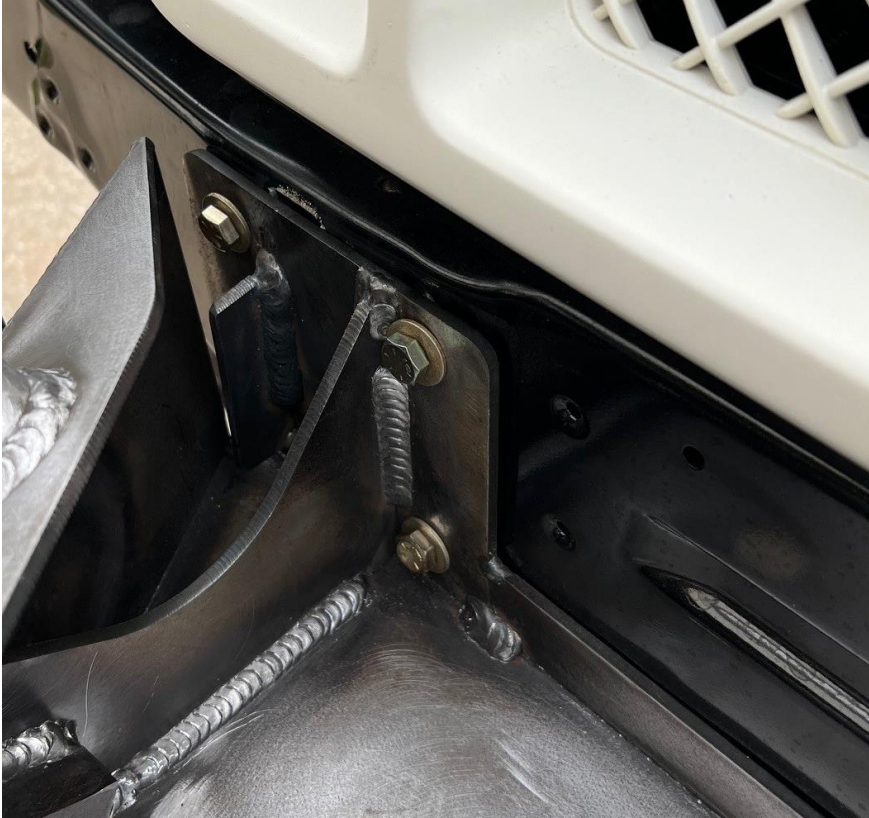


- With the hardware installed on the side of the frame rails, mark the hole locations on the frame face and match drill with a 3/8" drill bit.
- Use the provided template to mark the holes that can't be reached once the bumper is removed.



- At this point of the installation the handling of the bumper will be minimal and would be a good time for paint or coating.

- Loosely install all the hardware with the provided outside frame plates, adjust the bumper as required and tighten all hardware to 35 ft lbs.



Enjoy!