



Chef Works®

PRODUCT CATALOG

BACK OF HOUSE • WAITSTAFF • COATS • PANTS • APRONS • HEADWEAR

INDEX

Executive Coat Collection.....	3
Essential Coat Collection.....	4
Women's Coat Collection.....	10
Men's Pants Collection.....	13
Women's Pants Collection.....	15
Apron Collection.....	16
Kids Collection.....	30
Headwear Collection.....	31
Sizing & Fit Guide.....	32

GUIDE TO SIZING/FITS

Our new and improved sizing guide is designed to help you find your perfect fit. We've developed easy-to-follow instructions for all of our garments. Throughout this catalogue you will see icons next to items that correspond to specific fits and sizing charts.

Please refer to page 30 to match the icons and view the sizing guide.

EXAMPLE

MF 1 Modern Fit
Men's Shirt

sales@chefworks.co.za
www.chefworks.co.za

22 Commerce Crescent, Kramerville, Sandton, 2031
*By Appointment Only



WELCOME

Established in 1964 when Joseph Gross founded a small uniform company in South Africa, Chef Works has evolved into a global force as a solutions based company, designing, manufacturing and supplying culinary apparel to over seventy countries.

Experts in dressing both back and front-of-house staff, Chef Works has a diverse range of customers including international hotel chains, award-winning restaurants and bars, culinary schools, foodservice companies, laundries, and assisted living facilities.

Headquartered in San Diego, California, the corporation has helped pave the way for the current culinary uniform movement by working directly with chefs and culinary personnel to develop innovative, fashion-forward garments.

GUIDE TO FABRIC ICONS



100% cotton • Longer garment lifespan • Pre-shrunk for accurate fit • Luxurious & refined feel for extreme comfort • Silky texture & appearance



Wicks heat & moisture away from skin • Allows cool air back through to body • Encourages evaporation • Cool & comfortable • Award-winning fabric technology



Street-inspired line of culinary apparel • Bold striped patterns, lightweight dual tone denims, unique fabric finishes • New twists on traditional classics • Cutting-edge • Affordable • High-quality



Fine twill fabric • Comfortable & lightweight • Available in a variety of colors



Made from 100% cotton • All natural fibers • Comfortable and breathable



Special washes & treatments to create this unique garment may fade & change the color with wash & wear • Wash separately before wearing • Use a warm iron to remove wrinkles on the back side of the garment

Artist Credit: Gina Faulk, Gina the Artist

Embroidery Credit: Sunfare, SeaSalt Restaurant, Mexx 32, The DogHouseKowloon

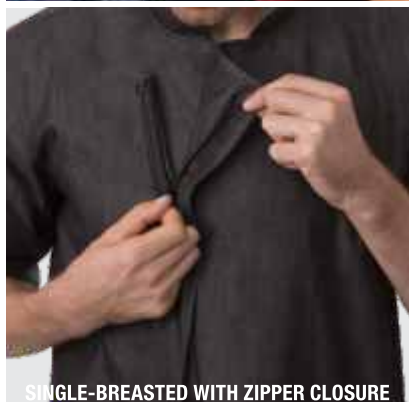
Photography Credits: Aaron Brown, Jim Coit, Don Diaz, Aidin Foster, Martin Rusch, Michael Spangler

GRAMERCY

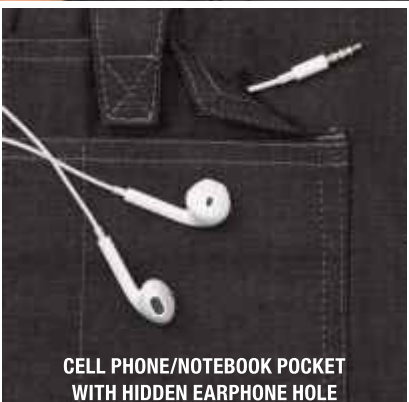


BLK
(black)

Chef Thiago Silva
CHEW Innovation, Boston, MA



SINGLE-BREADED WITH ZIPPER CLOSURE



CELL PHONE/NOTEBOOK POCKET
WITH HIDDEN EARPHONE HOLE



BACK COLLAR APRON HOLDER

136g 100% cotton denim fabric, single-breasted with zipper closure, roll-up long sleeve with tab, back collar apron holder with engraved snap tab, contrast double-stitching throughout, left sleeve rounded thermometer pocket, right sleeve rounded cell phone/notebook pocket with hidden earphone hole.

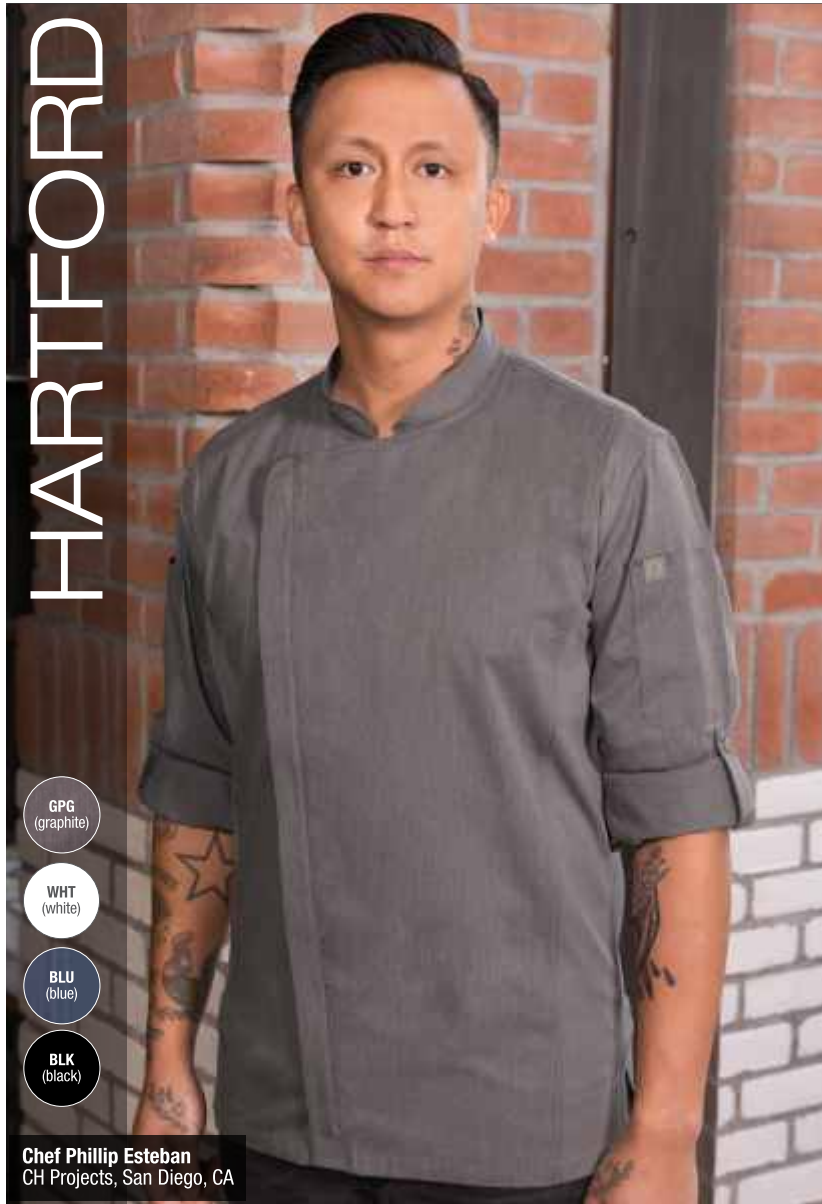
MF 1

BLK
(black)

- 82040S | SMALL
- 82041S | MEDIUM
- 82042S | LARGE
- 82043S | XL

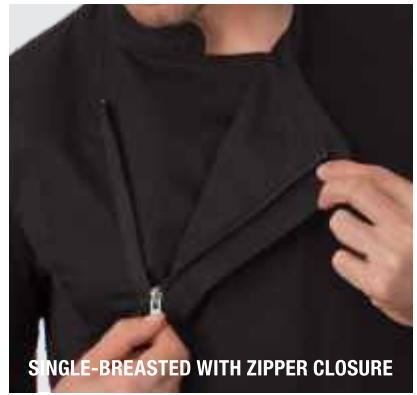
ESSENTIAL COAT COLLECTION

HARTFORD



- GPG (graphite)
- WHT (white)
- BLU (blue)
- BLK (black)

Chef Phillip Esteban
CH Projects, San Diego, CA



NEW COLOURS,
CRAFTED
WITH HEART.

SAY HELLO TO
THE HARTFORD.



133.2g 65/35 poly/cotton 'lite' twill fabric, Cool Vent™ sides, side seam slits, single-breasted with zipper closure, roll-up long sleeve with tab, back collar apron holder with engraved snap, left sleeve thermometer pocket, cell phone/notebook pocket, women's fit available.
Available in GPG, WHT, BLU, BLK

MF 1



	82035S SMALL		82030S SMALL		82481 XS		82480 XS
	82036S MEDIUM		82031S MEDIUM		82025S SMALL		82020S SMALL
	82037S LARGE		82032S LARGE		82026S MEDIUM		82021S MEDIUM
	82038S XL		82033S XL		82027S LARGE		82022S LARGE
	82039S XXL				82028S XL		82023S XL
				82029 XXL	82024 XXL		

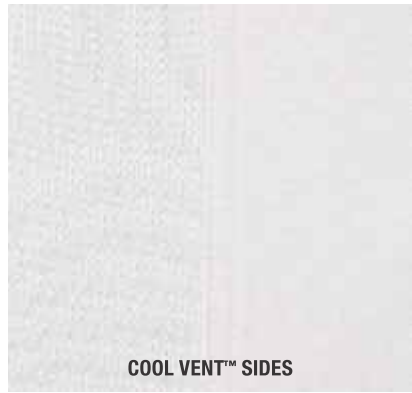
ESSENTIAL COAT COLLECTION

SPRINGFIELD

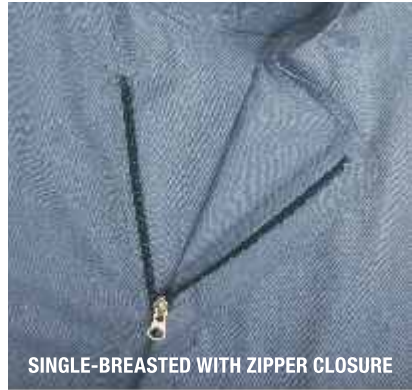


- BLK**
(black)
- WHT**
(white)
- INB**
(ink blue)
- GRY**
(gray)

Jet Tila
Celebrity Chef & Restaurateur, Los Angeles, CA
SPRINGFIELD CHEF COAT



COOL VENT™ SIDES



SINGLE-BREASTED WITH ZIPPER CLOSURE



BACK COLLAR APRON HOLDER



133.2g 65/35 poly/cotton 'lite' twill fabric, Cool Vent™ sides, side seam slits, short-sleeve, single-breasted with zipper closure, back collar apron holder with engraved snap, left sleeve rounded thermometer pocket, right sleeve cell phone/notebook pocket, women's fit available.

Available in BLK, WHT, INB

MF 1



	82485 XS		82484 XS		82105S SMALL		82010 SMALL
	82005S SMALL		82000S SMALL		82106S MEDIUM		82011 MEDIUM
	82006S MEDIUM		82001S MEDIUM		82107S LARGE		82012 LARGE
	82007S LARGE		82002S LARGE		82108S XL		82013 XL
	82008S XL		82003S XL				
	82009 XXL		82004 XXL				

MONTREAL



BLK
(black)

WHT
(white)

Chef Antonio Friscia
Legal Restaurants, San Diego, CA

133.2g 65/35 poly/cotton 'lite' twill fabric, Cool Vent™ back yoke, short-sleeve, cloth-covered buttons, left chest patch & thermometer pockets
Available in BLK, WHT

CF 1

BLK
(black)

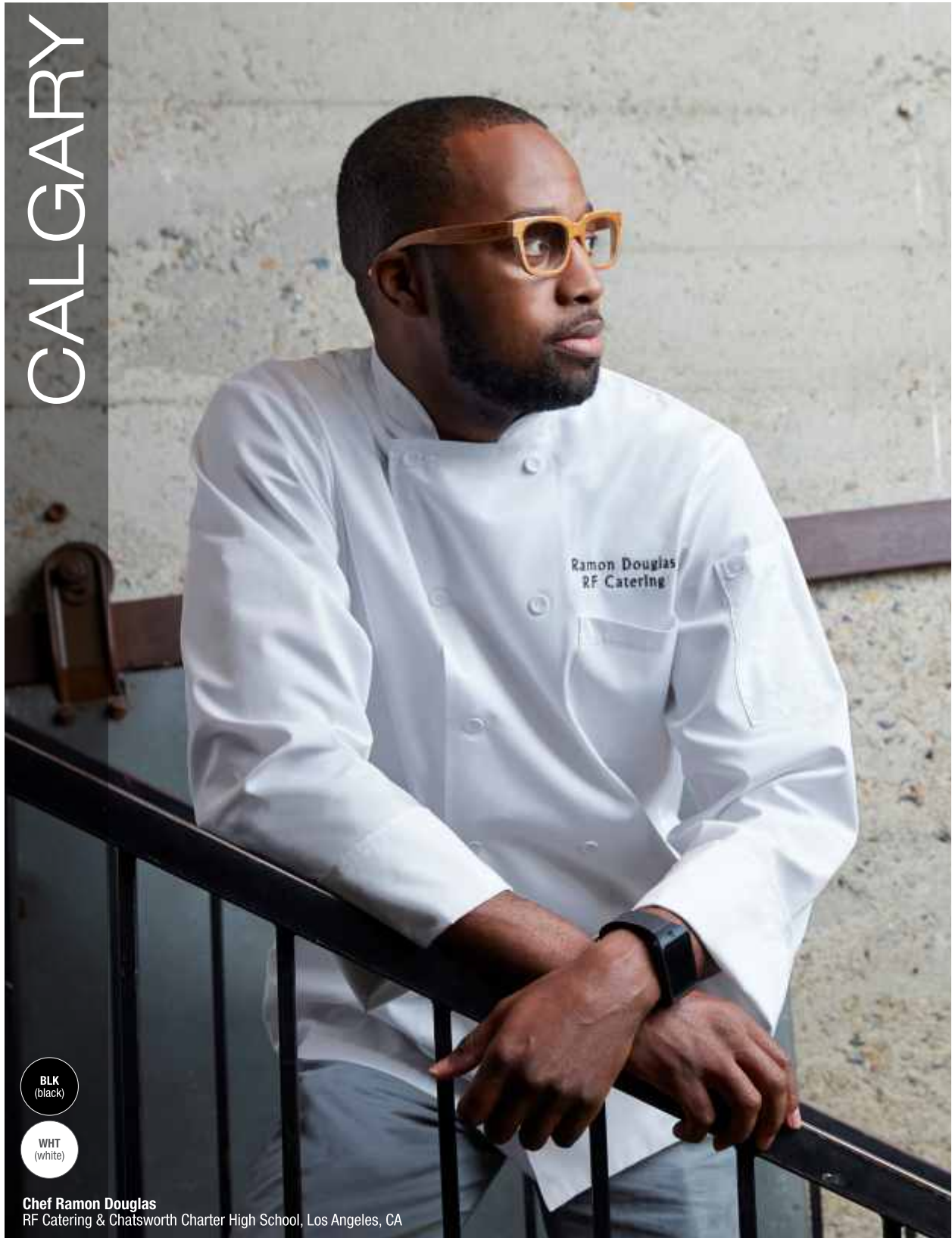
- 82055S | SMALL
- 82056S | MEDIUM
- 82057S | LARGE
- 82058S | XL

WHT
(white)

- 82060S | SMALL
- 82061S | MEDIUM
- 82062S | LARGE
- 82063S | XL



CALGARY



BLK
(black)

WHT
(white)

Chef Ramon Douglas
RF Catering & Chatsworth Charter High School, Los Angeles, CA

133.2g 65/35 poly/cotton 'lite' twill fabric, Cool Vent™ back yoke, turn-back cuffs, cloth-covered buttons, left chest patch & thermometer pockets
Available in BLK, WHT

CF 1

BLK
(black)

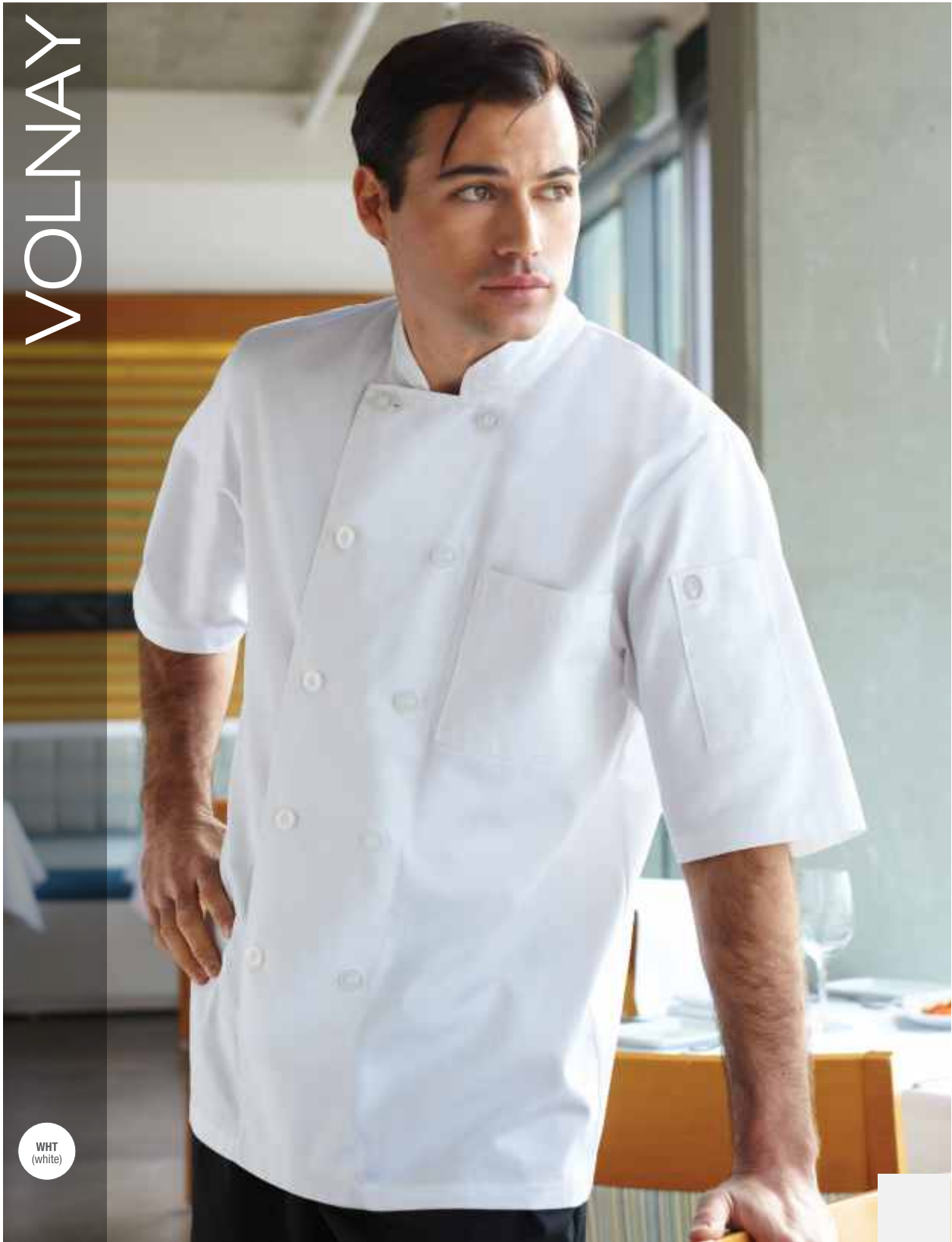
82065S | SMALL
82066S | MEDIUM
82067S | LARGE
82068S | XL

WHT
(white)

82070S | SMALL
82071S | MEDIUM
82072S | LARGE
82073S | XL



VOLNAY



WHT
(white)

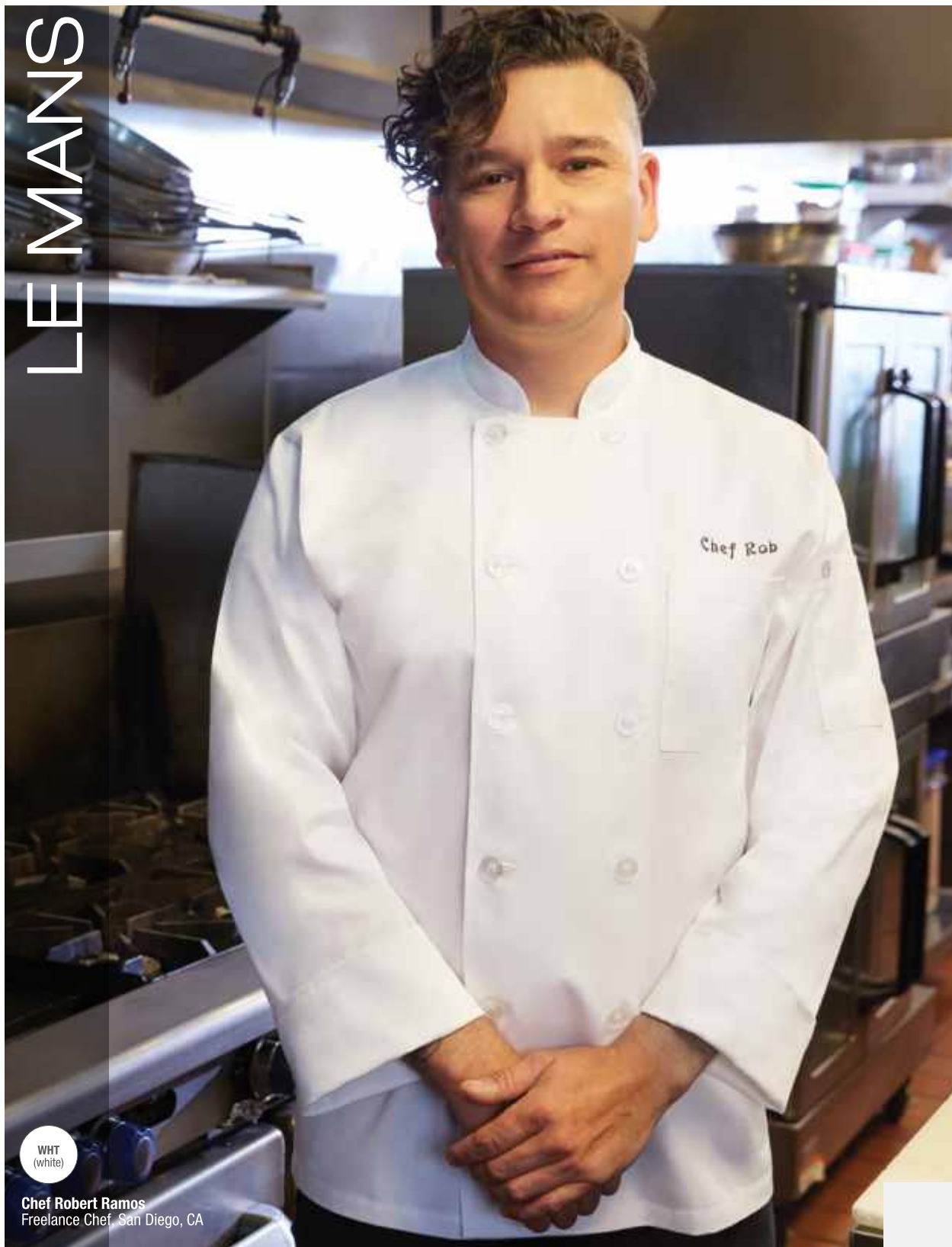
175.8g 65/35 poly/cotton, short-sleeve, matching buttons,
left chest patch & thermometer pockets
Available in WHT

CF 1

<p>WHT (white)</p>	82520 XS	XS
	82520 S	SMALL
	82520 M	MEDIUM
	82520 L	LARGE
	82520 XL	XL
	82520 XXL	XXL



LE MANS



WHT
(white)

Chef Robert Ramos
Freelance Chef, San Diego, CA

175.8g 65/35 poly/cotton, turn-back cuffs, matching buttons,
left chest patch & thermometer pockets.

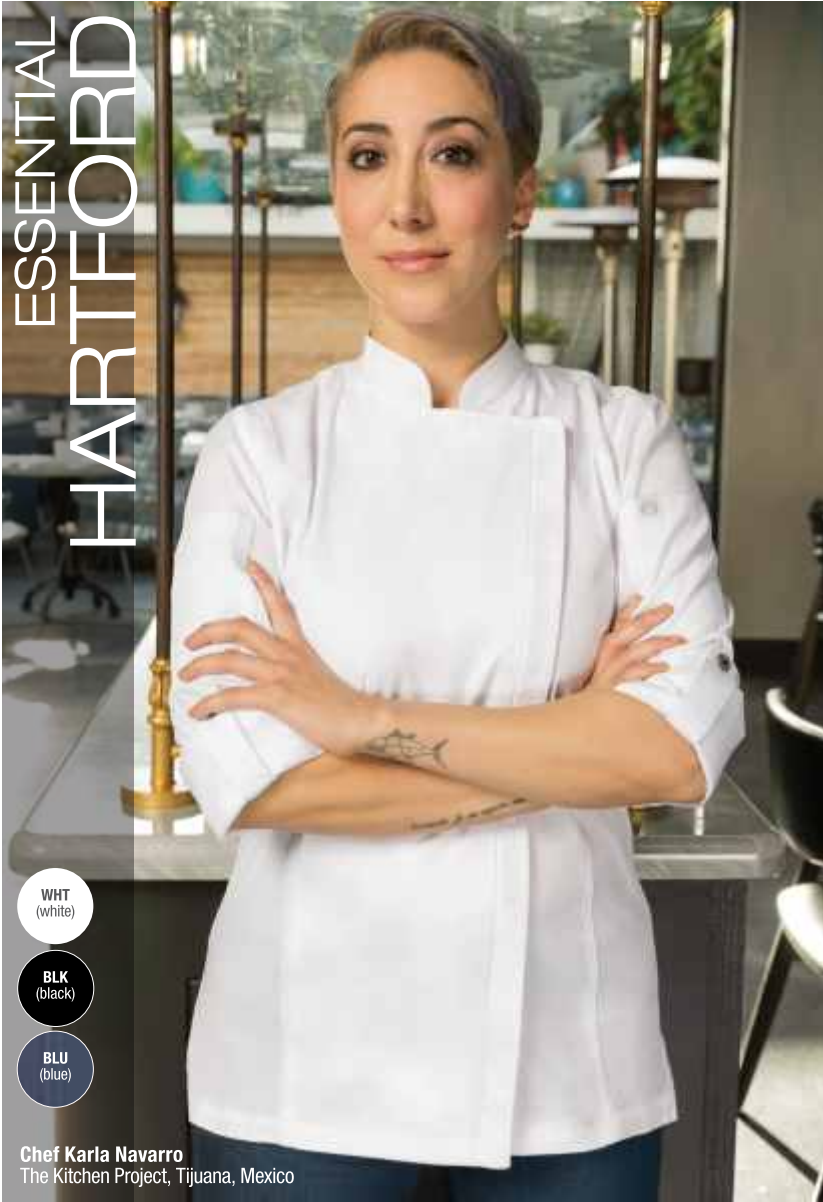
Available in WHT

CF 1

WHT (white)	82539 S	SMALL
	82539 M	MEDIUM
	82539 L	LARGE
	82539 XL	XL
	82539 XXL	XXL



WOMEN'S COAT COLLECTION



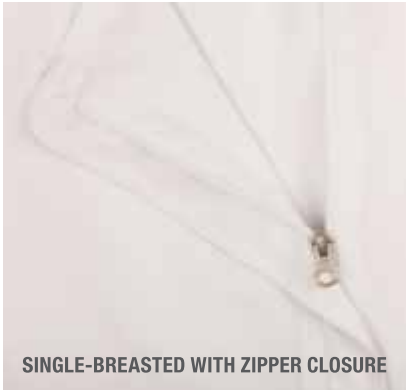
ESSENTIAL
HARTFORD

- WHT
(white)
- BLK
(black)
- BLU
(blue)

Chef Karla Navarro
The Kitchen Project, Tijuana, Mexico



COOL VENT™ SIDES



SINGLE-BREADED WITH ZIPPER CLOSURE



BACK COLLAR APRON HOLDER

DON'T SACRIFICE STYLE FOR FUNCTIONALITY. WITH THE HARTFORD WOMEN'S COAT, YOU'RE TURNING HEADS WHILE GETTING THE JOB DONE.



133.2g 65/35 poly/cotton*lite[®] twill fabric, Cool Vent™ sides and side seam slits, single-breasted with zipper closure, roll-up long sleeve with tab, back collar apron holder with engraved snap, left sleeve rounded thermometer pocket, right sleeve rounded cell phone/notebook pocket
Available in WHT, BLK, BLU

SF 1



- WHT
(white)
- 82090S | SMALL
- 82091S | MEDIUM
- 82092S | LARGE
- 82093S | XL

- BLK
(black)
- 82095S | SMALL
- 82096S | MEDIUM
- 82097S | LARGE
- 82098S | XL

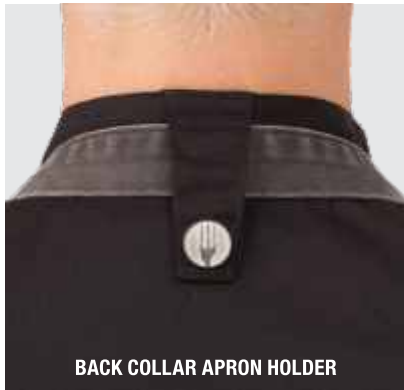
- BLU
(blue)
- 82100S | SMALL
- 82101S | MEDIUM
- 82102S | LARGE
- 82103S | XL



SINGLE-BREADED WITH ZIPPER CLOSURE



COOL VENT™ SIDES



BACK COLLAR APRON HOLDER

ESSENTIAL
SPRINGFIELD

BLK
(black)

WHT
(white)

GRY
(gray)

Chef Einat Admony
Chef/Author/Restaurateur, New York, NY



133.2g 65/35 poly/cotton 'lite' twill fabric, Cool Vent™ sides, side seam slits, short-sleeve, single-breasted with zipper closure, back collar apron holder with engraved snap, left sleeve rounded thermometer pocket, right sleeve rounded cell phone/notebook pocket
Available in BLK, WHT, GRY

SF 1



WHT
(white)

82080S | SMALL
82081S | MEDIUM
82082S | LARGE
82083S | XL

BLK
(black)

82075S | SMALL
82076S | MEDIUM
82077S | LARGE
82078S | XL

GRY
(gray)

82085 | SMALL
82086 | MEDIUM
82087 | LARGE
82088 | XL

ESSENTIAL
SOFIA



BLK
(black)

WHT
(white)

Chef Penelope Wong
Glenmoor Country Club, Cherry Hills Village, CO

133.2g 65/35 poly/cotton 'lite' twill fabric, turn-back cuffs, side seam slits, cloth-covered buttons, thermometer pocket
Available in BLK, WHT

CF 1

WHT
(white)

82240S | SMALL
82241S | MEDIUM
82242S | LARGE
82243S | XL

BLK
(black)

82465S | SMALL
82466S | MEDIUM
82467S | LARGE
82468S | XL



LIGHTWEIGHT SLIM



MODERN STRAIGHT FIT

SITS SLIGHTLY ABOVE
HIP, TAPERED SILHOUETTE
THROUGH THE THIGH FOR A
CONTEMPORARY LOOK. 78.7CM
INSEAM. STRAIGHT THROUGH
THE LEG AND KNEE, TAPERED
45.2CM LEG OPENING.

BLK
(black)

133.2g 65/35 poly/cotton 'lite' fabric, elastic waistband with internal drawstring, zipper fly, side leg panel, back leg seam detail, 2 side seam pockets, 2 back patch pockets.

Available in BLK

MT 1

BLK (black)	82505	XS
	82500	SMALL
	82501	MEDIUM
	82502	LARGE
	82503	XL
	82504	XXL



LIGHTWEIGHT BAGGY



MODERN FIT

—

SITS ON NATURAL WAIST,
STRAIGHT SILHOUETTE
THROUGH THE THIGH AND LEG
FOR A CLEAN LOOK,
82.55CM INSEAM.
STRAIGHT 48.26CM
LEG OPENING



133.2g 65/35 poly/cotton 'lite' twill fabric, double-needle topstitching detail, flat drawstring, curved elastic waistband with zipper fly, cell phone pocket, 2 side seam pockets, 2 oversized back pockets

Available in BLK

MF 1

	82189S	XS
	82190S	SMALL
	82191S	MEDIUM
	82192S	LARGE
	82193S	XL



WOMEN'S
LIGHTWEIGHT SLIM



MODERN
FIT

—

SITS ON NATURAL WAIST,
STREAMLINED SILHOUETTE
THROUGH THE THIGH AND LEG
FOR A POLISHED LOOK,
78.74CM INSEAM.
SLIGHT BOOTCUT, 47CM
LEG OPENING

BLK
(black)

133.2g 65/35 poly/cotton 'lite' twill fabric, contrast elastic waistband with internal drawstring, 2 front set-in pockets
Available in BLK

MF 1

BLK (black)	82510	XS
	82205	SMALL
	82206	MEDIUM
	82207	LARGE
	82208	XL
	82209	XXL





APRON COLLECTION

CRAFTED USING HEAVYWEIGHT FABRICS, CHEF WORKS APRONS OFFER DURABILITY AND SUPERIOR PROTECTION FROM THE ROUGH-AND-TUMBLE KITCHEN LIFESTYLE. DEVELOPED WITH THE CHEF IN MIND, WE WORK ONE-ON-ONE WITH INDUSTRY ELITES TO DESIGN AND DEVELOP THE PERFECT APRONS—FROM OUR CLASSIC LINE-UP TO OUR CONTEMPORARY URBAN COLLECTION™.

APRON COLLECTION



INSPIRED BY THE STRONG COUNTER CULTURE THAT DEFINES THE BAY AREA, OUR DESIGNERS CREATED **THE "ANTI-APRON."**

THE TRADITIONAL NECK STRAP IS REPLACED WITH **CROSSBACK SUSPENDER STRAPS** & FOR OUR POPULAR HALF BISTRO & WAIST STYLE APRONS, WE DEvised A NEW LINE OF **SNAP-ON WAIST TIES.**

THE BERKELEY OFFERS AN ALMOST ENDLESS AMOUNT OF CREATIVITY TO YOUR 5-TO-9 UNIFORM.



324 WAYS TO PERSONALIZE YOUR BERKELEY



CREATE AN APRON THAT'S AS UNIQUE AS YOU ARE. OUR BERKELEYS FEATURE ADDITIONAL SUSPENDER AND SNAP-ON WAIST TIE OPTIONS SOLD SEPERATELY.

MIX & MATCH FOR ADDED FLEXIBILITY & CREATIVITY TO DESIGN A WHOLE NEW LOOK.

HOW TO BERKELEY

STEP 1

CHOOSE YOUR
APRON STYLE.

STEP 2

CHOOSE YOUR
COLOR/SUSPENDER
COMBO.

EACH APRON
COMES WITH
A PAIRED
SUSPENDER—
WHICH CANNOT
BE SUBSTITUTED.

STEP 3 (OPTIONAL)

SELECT ADDITIONAL
APRON STRAPS.

**THE POSSIBILITIES
ARE ENDLESS.**

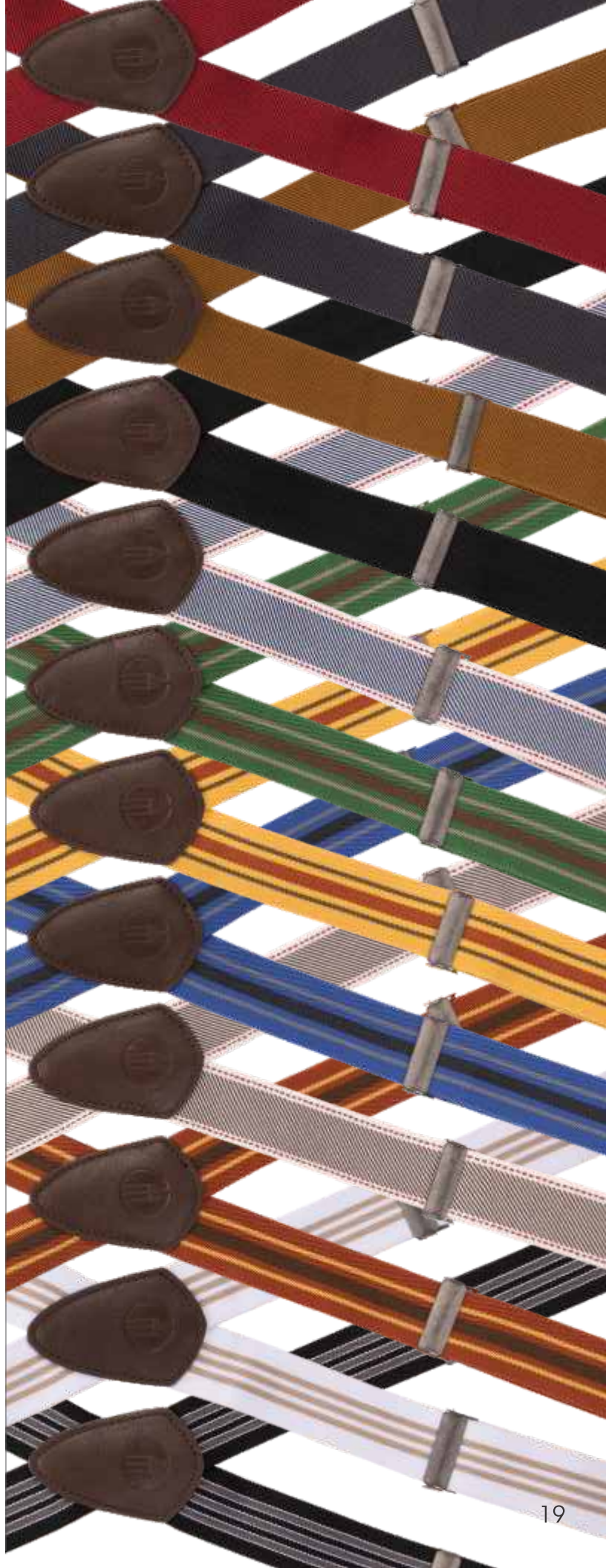
BIB SUSPENDERS

Fits 5' to 6'2" height
STRAP WIDTH: 1¼" (3cm)
ONE SIZE

SNAP-ON WAIST TIES

STRAP WIDTH: 1" (2½cm)
ONE SIZE

*Additional suspenders available on order



BERKELEY



MADE TO FAD

BIB



PERSONALIZE YOUR APRON. ADDITIONAL SUSPENDER SETS SOLD SEPARATELY.



JBK (jet black)



BGY (black/gray)

BERKELEY BIB APRON | 82172S



- Double right chest pockets
- 2 hip pockets
- 84.4cm L x 76.2cm W

BIB



CROSS-BACK DETAIL



BIB SUSPENDERS

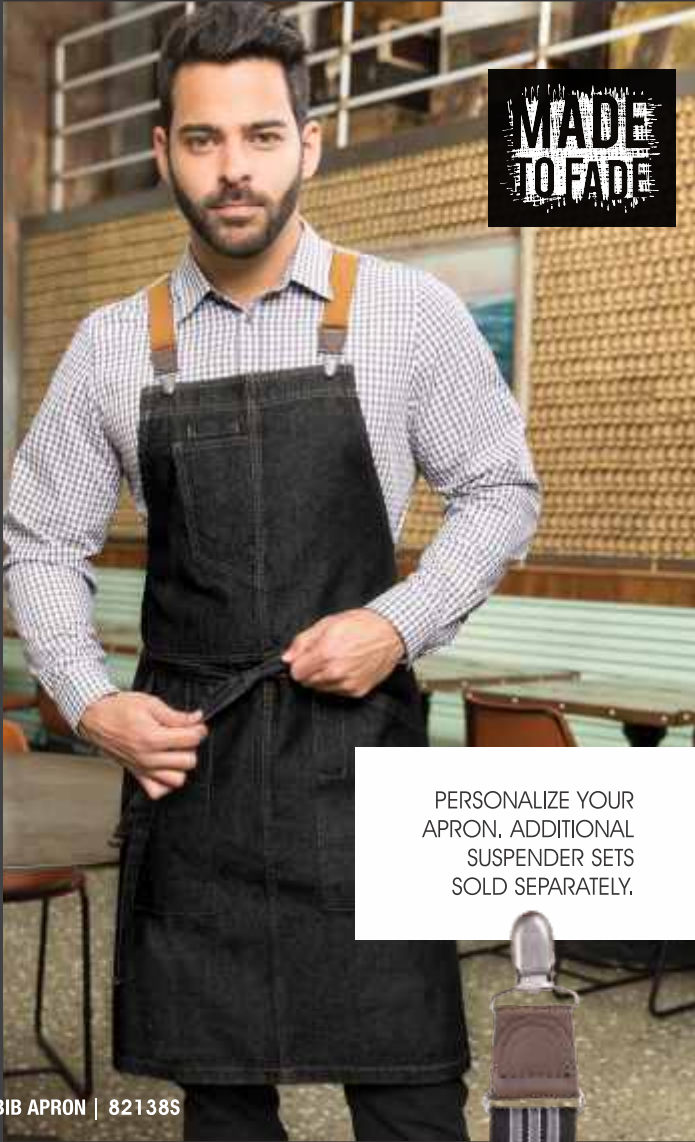
DETAILS

- 285.5g 100% cotton
- Reinforced stress points
- Unisex
- Double-needle stitching
- Pockets with riveted outside ends
- Suspender set included with apron
- Additional suspenders sold separately

BIB SUSPENDERS INCLUDED:
Black/Grey



BERKELEY



MADE TO FAD

PERSONALIZE YOUR APRON, ADDITIONAL SUSPENDER SETS SOLD SEPARATELY.

BLK (black indigo)

DES (desert sand)

BERKELEY BIB APRON | 821385

- Double right chest pockets
- 2 hip pockets
- 84.4cm L x 76.2cm W



CROSS-BACK DETAIL



BIB SUSPENDERS

BIB



BIB



DETAILS

- 235.3g 100% cotton denim
- Reinforced stress points
- Unisex
- Double-needle stitching
- Pockets with riveted outside ends
- Suspender set included with apron
- Additional suspenders sold separately

BIB SUSPENDERS INCLUDED:
Desert Sand



GALVESTON



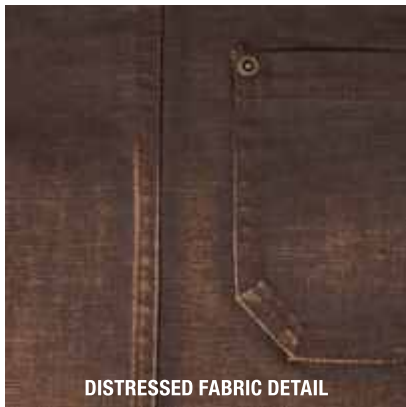
CHO
(chocolate)

GRY
(gray)

CROSS-BACK BIB



CROSS-BACK BIB



DISTRESSED FABRIC DETAIL



CROSS-BACK DETAIL



SNAP DETAILS

CHO
(chocolate)

82140S

GRY
(gray)

82141

263.7g 100% cotton canvas fabric with artisan finish, adjustable cross-back ties with snap tabs, inset chest thermometer pocket with pencil divide, 2 hip pockets with saddle stitching detail, (right with inset pencil pocket), riveted pocket ends

86.36cm L x 76.2cm W



INDY



- SGY (steel gray)
- NBK (navy-black)

INDY HIPSTER APRON

THIS LITTLE NUMBER MAKES A BIG IMPRESSION.



THE NEXT GENERATION. INTRODUCING YOUR NEXT WARDROBE WORKHORSE.

HIPSTER



HIPSTER



263.7g 100% cotton with artisan finish, adjustable belt, metal clasp, D-ring & buckle closure, iPad/notebook pocket, cell phone pocket, thermometer/pen pocket, riveted pocket ends.

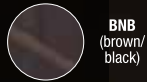
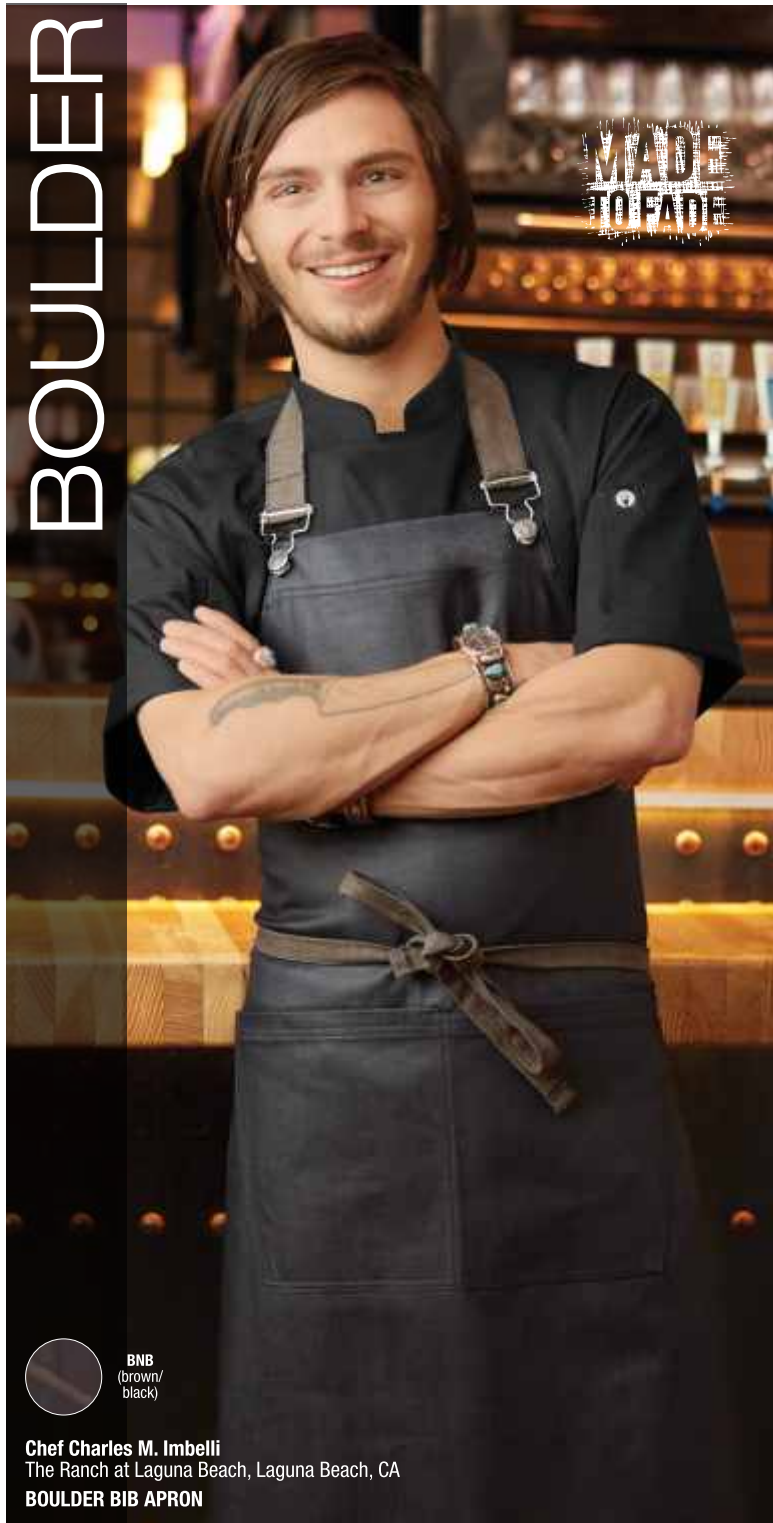
Available in NBK, SGY,
28,58cm L x 39,37cm W

82147
NBK (navy-black)

82148
SGY (steel gray)



BOULDER



BNB
(brown/
black)

Chef Charles M. Imbelli
The Ranch at Laguna Beach, Laguna Beach, CA
BOULDER BIB APRON

306.2g 100% cotton denim with a waxed finish look, towel loop, reverse fabric ties, reinforced stress points, adjustable neck with overall clips, double front pockets

86.36cm L x 76.2cm W

82152S | BIB APRON

BIB



HALF BISTRO

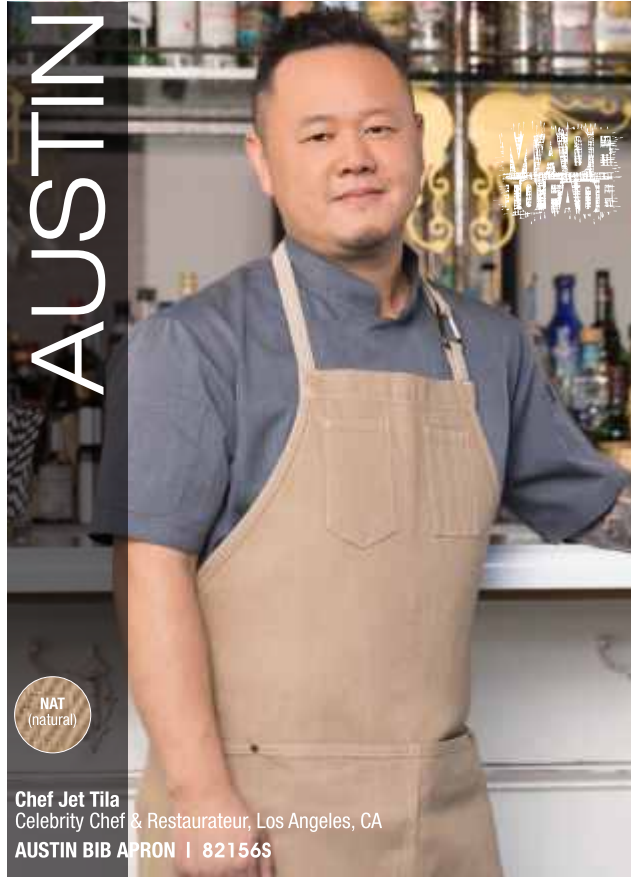


306.2g 100% cotton denim with a waxed finish look, tapered design, reverse fabric ties with grommets, double front pockets

45.72cm L x 78.74cm W

82153 | HALF BISTRO





NAT
(natural)

Chef Jet Tila
Celebrity Chef & Restaurateur, Los Angeles, CA
AUSTIN BIB APRON | 82156S



REVERSE FABRIC TIES



BIB



- 275g 100% cotton denim
- Reverse fabric ties
- Adjustable neck with snaps/carabiner
- Tweezer chest pockets
- Cell phone pocket

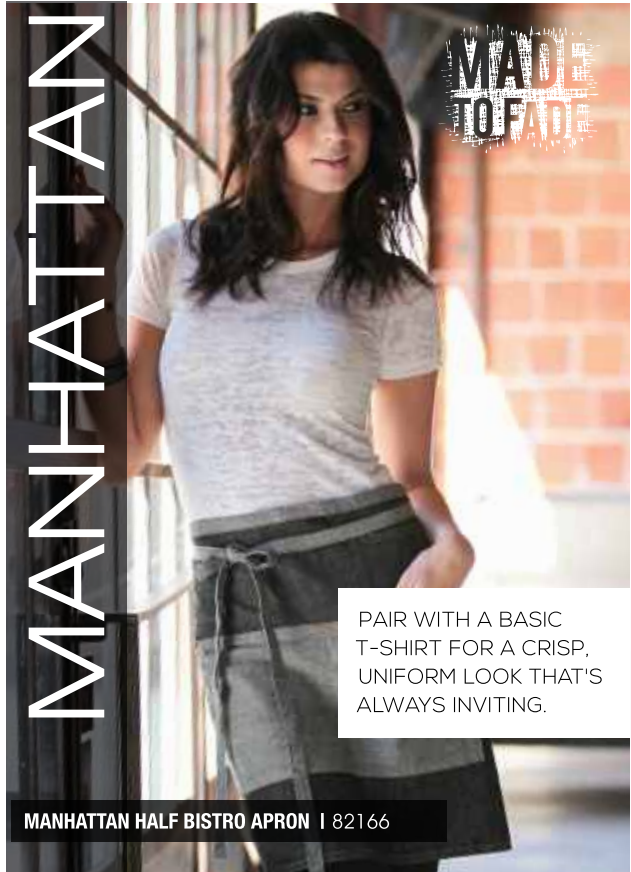
82156S | 86.36cm L x 76.2cm W

HALF BISTRO



- 275g 100% cotton denim
- Reverse fabric ties
- Cell phone hip pocket
- Double front pockets

82157S | 48.26cm L x 71.12cm W



MANHATTAN HALF BISTRO APRON | 82166



MANHATTAN BIB APRON | 82164

HALF BISTRO



184.27g 100% cotton denim, reverse fabric ties & pockets, adjustable metal neck buckle, riveted pocket ends, zipper chest pocket, double front pockets

86.36cm L x 76.2cm W

82166
BLK (black)

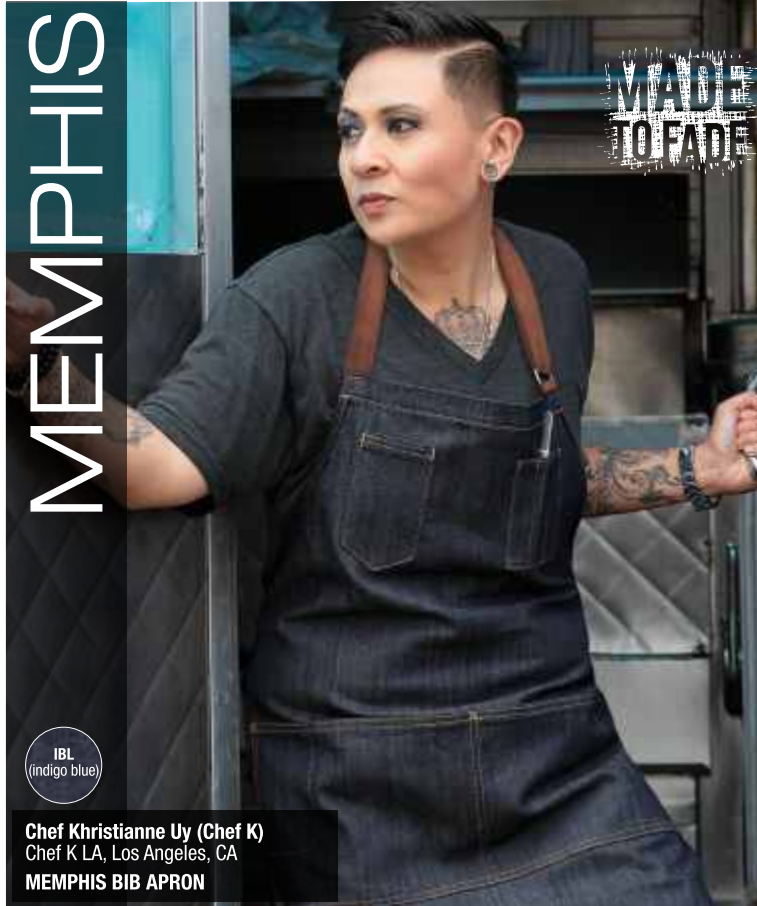
BIB



184.27g 100% cotton denim, reverse fabric ties & pockets, riveted pocket ends, zipper hip pocket, double front pockets

48.26cm L x 71.12cm W

82164
BLK (black)



MEMPHIS

MADE TO FADE

IBL (indigo blue)

Chef Khristianne Uy (Chef K)
 Chef K LA, Los Angeles, CA
MEMPHIS BIB APRON



CONTRAST BROWN TAPE TIES



2 CHEST POCKETS

BIB



HALF BISTRO



235.3g 100% cotton denim, contrast topstitching, adjustable metal neck buckle, contrast tape ties, criss-cross bar tacks, 2 chest pockets, double front pockets

Available in IBL

86.36cm L x 76.2cm W

IBL (indigo blue) **82174**

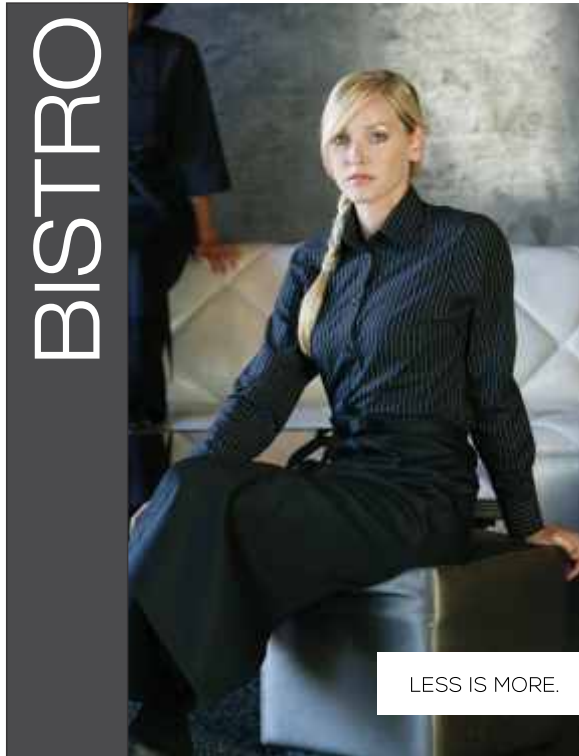
235.3g 100% cotton denim, contrast topstitching, contrast tape ties, criss-cross bar tacks, double front pockets with cell phone divide

Available in IBL

48.26cm L x 71.12cm W

IBL (indigo blue) **82176**





BLK
(black)

WHT
(white)

175.8g 65/35 poly/cotton, patch pocket with pencil divide

Available in BLK, WHT.

81.28cm L x 69.85cm W

BLK
(black)

82181S

WHT
(white)

82180S



175.8g 65/35 poly/cotton, no pocket

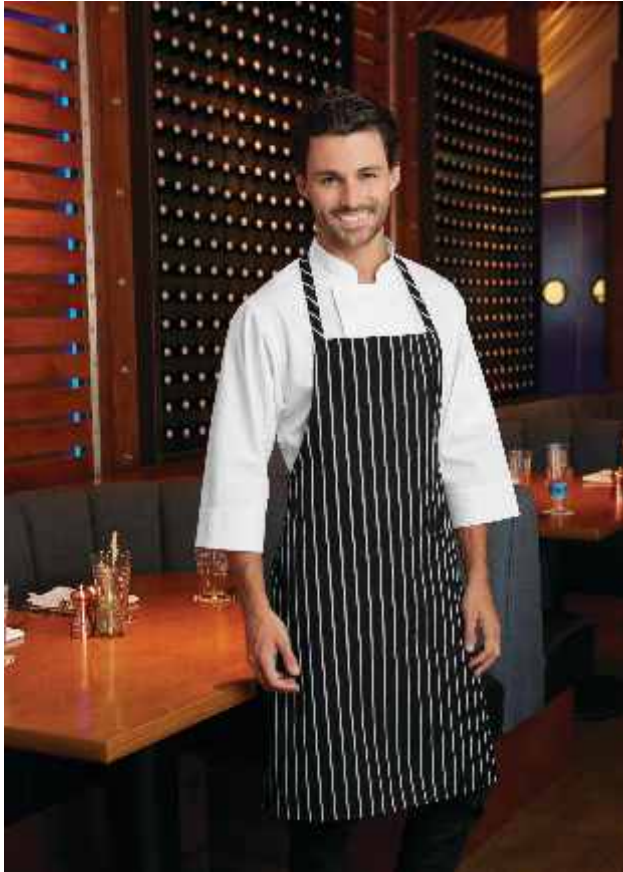
Available in WHT

83.82cm L x 69.85cm W

WHT
(white)

82187

APRON COLLECTION



CHALK STRIPE



176g yarn-dyed 65/35 poly/cotton,
patch pocket with center divide

82184S | 86.36cm L x 68.58cm W

BIB



175.77g 65/35 poly/cotton, adjustable neck buckle,
front patch pocket with center divide

86.36cm L x 60.9cm W



82182S

BIB



175.77g 65/35 poly/cotton, adjustable neck buckle,
front patch pocket with center divide

86.36cm L x 60.9cm W



82183S

KIDS COLLECTION



KIDS
CHEF APRON

WHT
(white)

176g 65/35 poly/cotton, non-adjustable neck, 2 pockets
Available in WHT

47cm L x 43.2cm W

WHT
(white)

82186S

KIDS
CHEF COAT

WHT
(white)

176g 65/35 poly/cotton, long-sleeve, turn-back cuffs,
matching buttons, limited sizing available
Available in WHT

WHT
(white)

82470S | XS
82471S | SMALL
82472S | MEDIUM

KIDS COAT
SIZE CHART

SIZE	AGE	HEIGHT	WEIGHT
XS	3-5	96cm - 112cm	15 - 20 kg
S	6-7	112cm - 127cm	20 - 25kg
M	8-10	127cm - 135cm	25 - 29kg

COOL VENT™
BEANIE



WHT (white)



BLK (black)

Cool Vent™ mesh top, 65/35 poly/cotton base, adjustable Velcro® closure, one size fits most
Available in WHT, BLK



82232S | ONE SIZE



82233S | ONE SIZE

CHEF
HAT



WHT (white)



BLK (black)

176g 65/35 poly/cotton, adjustable Velcro® closure, one size fits most
Available in BLK, WHT



82212S | ONE SIZE



82211S | ONE SIZE

SIZING

Chef Works has the perfect fit for you. To find your perfect fit, we've provided you with three easy-to-follow steps outlined below.

Please note our proprietary designs give Chef Works garments individual fits to allow for maximum comfort and function.

FIND YOUR PERFECT FIT IN 3 EASY STEPS

1

How do you want your garment to fit? Choose your fit from the color-coded charts shown on the next few pages.

2

What are your measurements? All of our garment size charts refer to actual chest, waist or hip measurements. Match yours to our charts to find your size.

3

Pick your garment!

MEASUREMENT GUIDELINES

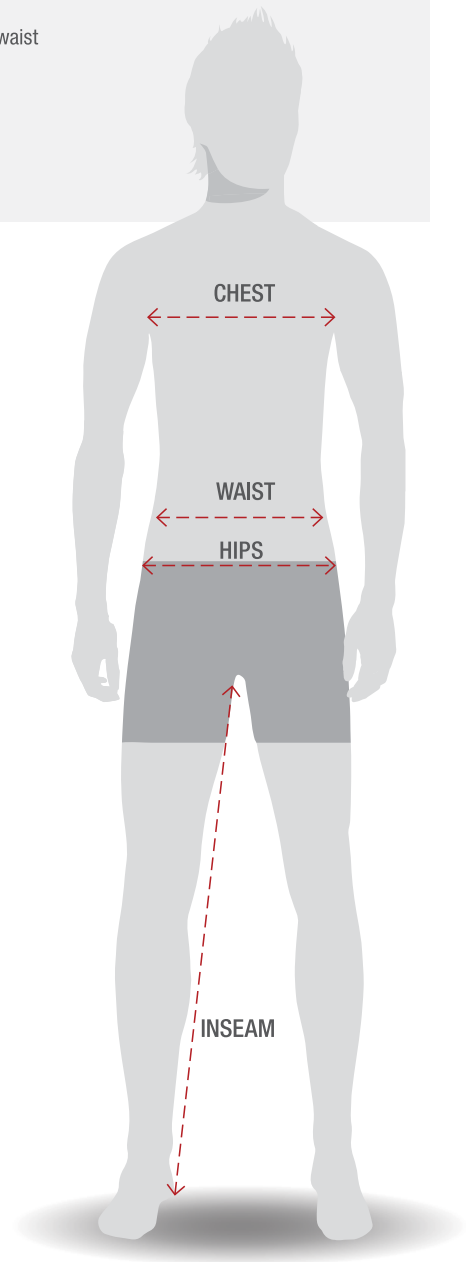
To get the best fit, stand straight and relax. With a measuring tape, use the illustration shown at the right as a guide and follow instructions below.

CHEST: Measure all the way around your body from the fullest part of the chest/bust with your arms down.

WAIST: Measure around your natural waistline above the hips.

HIPS: Measure around the widest part of your hips.

INSEAM: Measure from the base of the crotch to the bottom of your heel.



MEN'S SIZING

MEN'S COATS

COAT FITS	MF	Modern Fit Tailored fit, cut slim through the chest and body.										
	CF	Classic Fit Wider cut through the chest; wider sleeves for increased flexibility.										
	GF	Generous Fit Loosest fit, cut extra-wide through the body and sleeves.										
1	MEN'S/UNISEX COATS (ALPHA)											
	Chest (in)	32/34	36/38	40/42	44/46	48/50	52/54	56/58	60/62	64/66	68/70	72/74
	Size	XS	S	M	L	XL	2XL	3XL	4XL	5XL	6XL	7XL
	Chest (cm)	81/86	91/97	102/107	112/117	122/127	132/137	142/147	152/157	163/168	173/178	183/188
2	MEN'S/UNISEX COATS (NUMERIC)											
	Chest (in)	30	32	34	36	38	40	42	44	46	48	50
	Size	30	32	34	36	38	40	42	44	46	48	50
	Chest (cm)	76	81	86	91	96	102	107	115	117	122	127
	MEN'S/UNISEX COATS CONT'D (NUMERIC)											
	Chest (in)	52	54	56	58	60	62	64	66	68		
	Size	52	54	56	58	60	62	64	66	68		
	Chest (cm)	132	137	142	147	152	157	163	168	173		

MEN'S PANTS

PANT FITS	MF	Modern Fit Sits on natural waist, straight silhouette through the thigh and leg for a clean look, 32.5" inseam. Straight 19" leg opening.										
	MT	Modern Straight Fit Sits slightly above hip, tapered silhouette through the thigh for a contemporary look, 31" inseam. Straight through the leg and knee, tapered 17.8" leg opening.										
	MS	Modern Slim Fit Sits at hip, slim silhouette through the thigh and leg for a fitted look, 31" inseam. Tailored 15.6" leg opening.										
	CF	Classic Fit Sits on natural waist, relaxed fit through thigh and leg for a professional look, 32" inseam. Straight 18.2" leg opening.										
1	MEN'S PANTS (ALPHA)											
	Waist/hips (in)	26/28	30/32	34/36	38/40	42/44	46/48	50/52	54/56	58/60	62/64	66/68
	Size	XS	S	M	L	XL	2XL	3XL	4XL	5XL	6XL	7XL
	Waist/hips (cm)	66/71	76/81	86/91	97/102	107/112	117/122	127/132	137/142	147/152	157/162	167/172
2	MEN'S PANTS (NUMERIC)											
	Waist/hips (in)	24	26	28	30	32	34	36	38	40	42	44
	Size	00	0	2	4	6	8	10	12	14	16	18
	Waist/hips (cm)	61	66	71	76	81	86	91	97	102	107	112

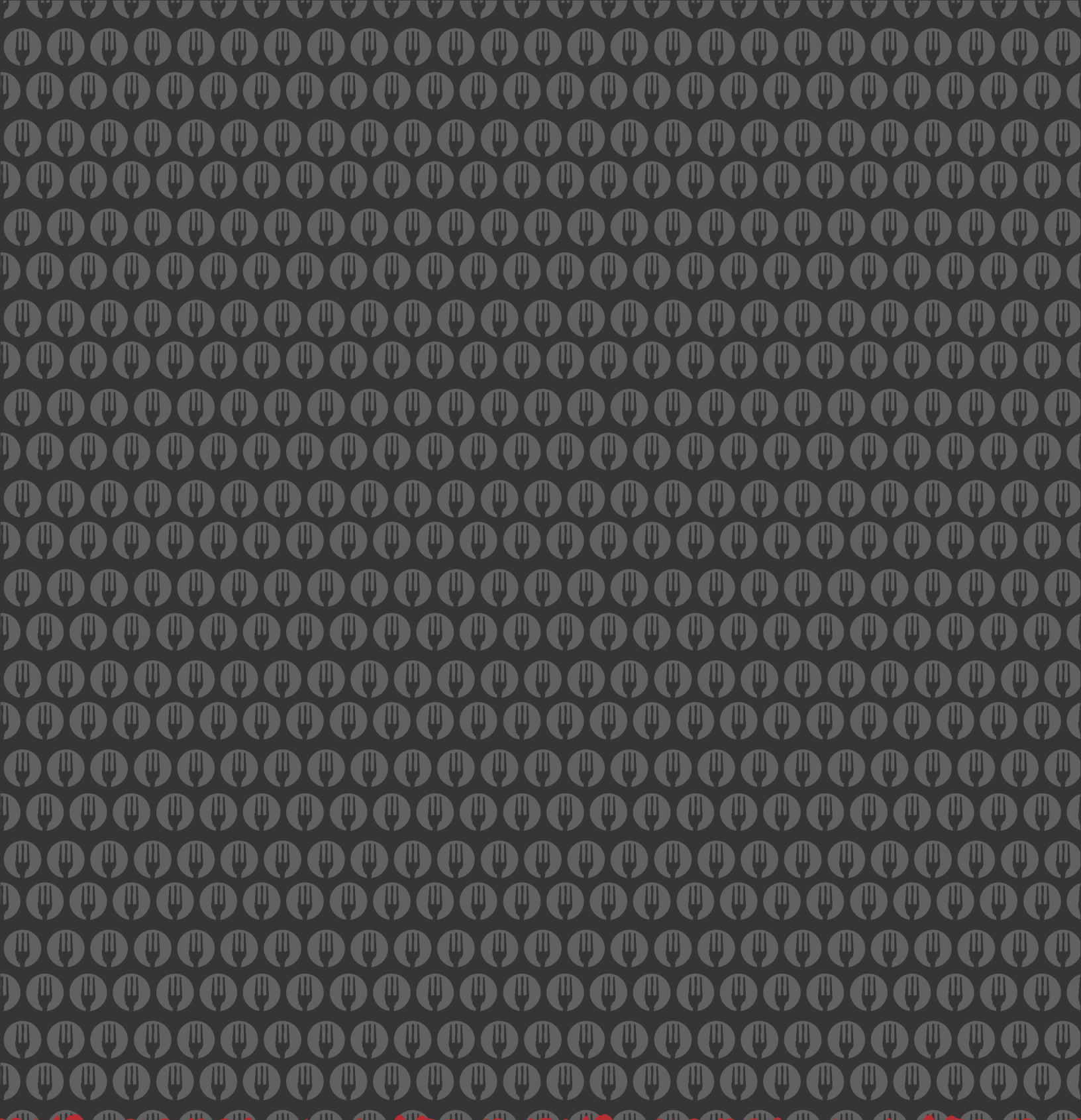
WOMEN'S SIZING

WOMEN'S COATS

COAT FITS	SF	Slim Fit Updated feminine fit skims the body for a form-fitting look.								
	CF	Classic Fit Relaxed fit tailored to the female form without compromising professional look.								
1	WOMEN'S COATS									
	Chest (in)	30/32	34/36	38/40	42/44	46/48	50/52	54/56	58/60	62/64
	Size	XS	S	M	L	XL	2XL	3XL	4XL	5XL
	Chest (cm)	76/81	86/91	97/102	107/112	117/122	127/132	137/142	147/152	157/163

WOMEN'S PANTS

PANT FITS	SF	Slim Fit Sits at hip, fitted silhouette through the thigh and leg for a slim look, 32" inseam. Tailored 16" leg opening.										
	MF	Modern Fit Sits on natural waist, streamlined silhouette through the thigh and leg for a polished look, 31" inseam. Slight bootcut 18.5" leg opening.										
	RF	Relaxed Fit Sits on natural waist, relaxed silhouette through thigh and leg for a professional look, 31.5" inseam. Slight flare 20" leg opening.										
1	WOMEN'S PANTS (ALPHA)											
	Waist/hips (in)	26/28	30/32	34/36	38/40	42/44	46/48	50/52				
	Size	XS	S	M	L	XL	2XL	3XL				
	Waist/hips (cm)	66/71	76/81	86/91	97/102	107/112	117/122	127/132				
2	WOMEN'S PANTS (NUMERIC)											
	Waist/hips (in)	24	26	28	30	32	34	36	38	40	42	44
	Size	00	0	2	4	6	8	10	12	14	16	18
	Waist/hips (cm)	61	66	71	76	81	86	91	97	102	107	112



Follow us on Facebook & Instagram!



www.chefworks.co.za

sales@chefworks.co.za

22 Commerce Crescent, Kramerville, Sandton, 2031

*By Appointment Only

