

### CERTIFICATE OF ANALYSIS

<b>SAMPLE NAME</b>	Patchouli		
<b>FORM</b>	Oil		
<b>CUSTOMER NAME</b>	Sacred Soul Holistics		
<b>CERTIFICATION DATE</b>	29 April 2021		
<b>CUSTOMER REFERENCE</b>	None Provided		
<b>ARL JOB #</b>	A210913	<b>LAB REF. #</b>	ARL2102660
<b>ANALYSIS</b>	GCMS - Compositional (LEVEL 1)		

TEST	RESULTS	TEST METHOD
	Area %	
$\alpha$ -pinene	0.04	ARL-TM101-4*
$\beta$ -pinene	0.10	
$\beta$ -patchoulene	2.45	
$\beta$ -elemene	1.14	
cycloseychellene	0.64	
$\beta$ -caryophyllene	2.89	
$\alpha$ -guaiene	12.57	
seychellene	6.77	
$\alpha$ -humulene	0.56	
$\alpha$ -patchoulene	4.74	
$\delta$ -patchoulene	1.87	
$\gamma$ -patchoulene	0.99	
aciphyllene	3.97	
$\alpha$ -bulnesene	18.02	
norpatchoulenol	0.76	
pogostone	0.72	
pogostol	2.62	
patchouli alcohol	31.76	

\* Assay by GC (MS detection –area percent report)

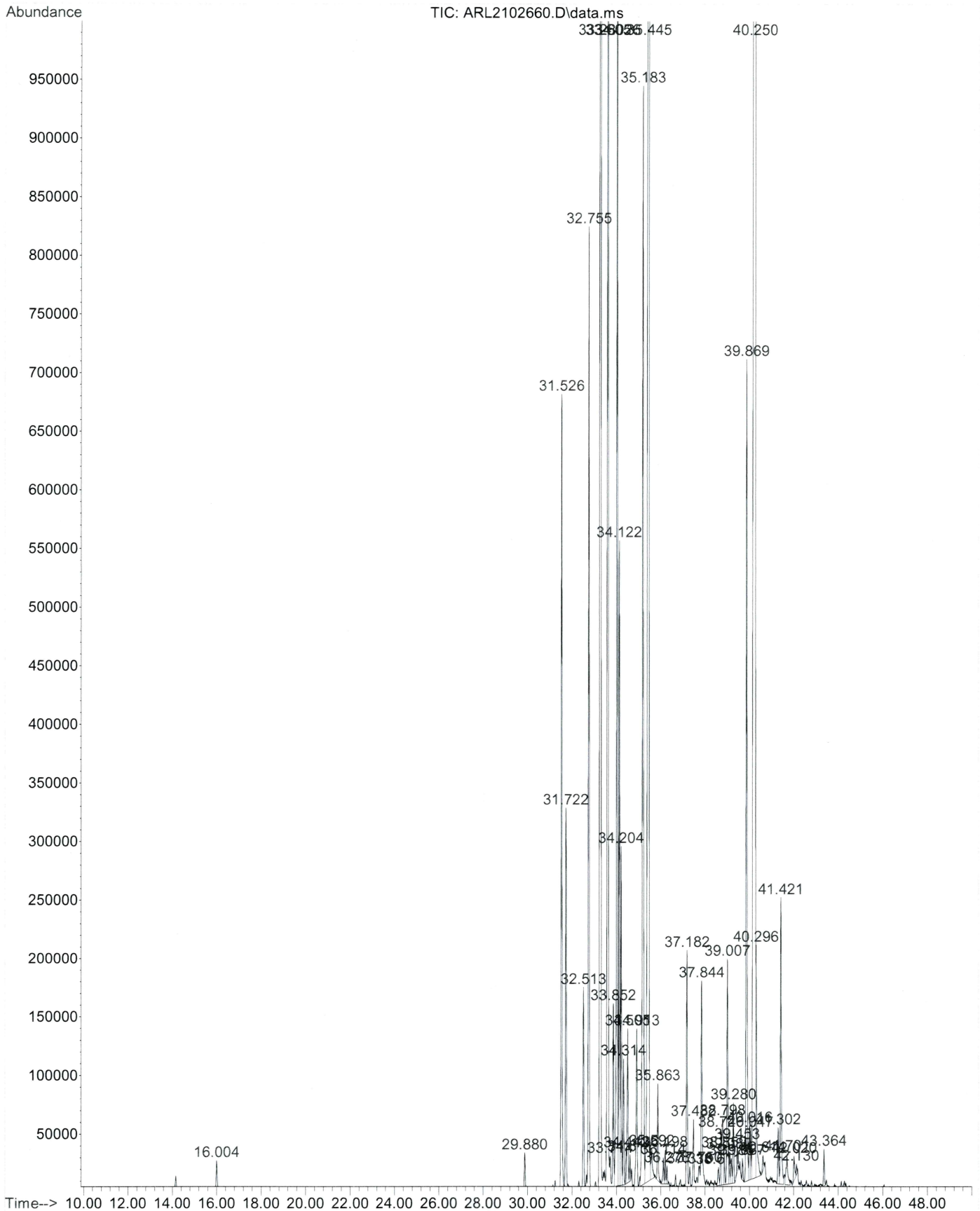


.....  
Anastasia Wilford  
**LABORATORY ASSISTANT**



.....  
Ashley Dowell  
**MANAGER - ARL**

File : I:\LabDATA\GCMS-1\Data\210419\ARL2102660.D  
Operator : AW  
Acquired : 19 Apr 2021 15:33 using AcqMethod ISO-EXT.M  
Instrument : Instrument #1  
Sample Name: Patchouli  
Misc Info :  
Vial Number: 32



AW  
27/4/21

## Library Search Report

Data Path : I:\LabDATA\GCMS-1\Data\210419\  
Data File : ARL2102660.D  
Acq On : 19 Apr 2021 15:33 (#1); 19-04-2021 3:33:26 PM (#2)  
Operator : AW  
Sample : Patchouli  
Misc :  
ALS Vial : 32 Sample Multiplier: 1

Search Libraries: C:\Database\ADAMS.L Minimum Quality: 80  
C:\Database\ESSOILS.L Minimum Quality: 70  
C:\Database\WILEY6.L

Unknown Spectrum: Apex  
Integration Events: Chemstation Integrator - events.e

Pk#	RT	Area%	Library/ID	Ref#	CAS#	Qual
1	14.154	0.04	C:\Database\ADAMS.L 5.85 Pinene<alpha->	912	000080-56-8	94
2	16.005	0.10	C:\Database\ADAMS.L 7.04 Pinene<beta->	305	000127-91-3	93
4	31.529	2.45	C:\Database\ADAMS.L 23.70 Patchoulene<beta->	1240	000514-51-2	98
5	31.722	1.14	C:\Database\ADAMS.L 24.15 Elemene<beta->	309	000515-13-9	99
6	32.510	0.64	C:\Database\ADAMS.L 24.90 Cycloseychellene	1643	052617-34-2	99
7	32.757	2.89	C:\Database\ADAMS.L 25.36 Caryophyllene(E-)	830	000087-44-5	99
8	33.279	12.57	C:\Database\ESSOILS.L GUAIONE - A	197	003691-12-1	94
9	33.603	6.77	C:\Database\ADAMS.L 26.50 Seychellene	1243	020085-93-2	99
11	33.849	0.56	C:\Database\ADAMS.L 26.82 Humulene<alpha->	827	006753-98-6	89
12	34.026	4.74	C:\Database\ADAMS.L 26.92 Patchoulene<alpha->	1241	000560-32-7	99
13	34.120	1.87	C:\Database\ESSOILS.L PATCHOULENE - DELTA	1333	000090-90-3	99
14	34.202	0.99	C:\Database\ADAMS.L 28.91 Patchoulene<gamma->	1242	000508-55-4	99
20	35.183	3.97	C:\Database\ADAMS.L 28.89 Aciphyllene	1642	087745-31-1	99
21	35.448	18.02	C:\Database\ADAMS.L 29.20 Bulnesene<alpha->	1244	003691-11-0	99
27	37.181	0.76	C:\Database\ADAMS.L 31.00 Norpatchoulenol	1644	041429-52-1	94
36	39.008	0.72	C:\Database\ESSOILS.L POGOSTONE	1331	000088-88-3	93
42	39.866	2.62	C:\Database\ESSOILS.L POGOSTOL	818	021698-41-9	95
45	40.248	31.76	C:\Database\ESSOILS.L PATCHOULI ALCOHOL	92	005986-55-0	99

843  
27/4/2