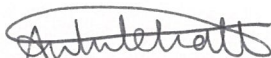


CERTIFICATE OF ANALYSIS

SAMPLE NAME	Eucalyptus polybractea		
FORM	Essential oil		
CUSTOMER NAME	Sacred Soul Holistics		
CERTIFICATION DATE	20 May 2019		
CUSTOMER REFERENCE	19567A		
ARL JOB #	A190980	LAB REF. #	ARL1902532
ANALYSIS	GCMS - Compositional (LEVEL 1)	METHOD	ARL-TM101

TEST	RESULTS	TEST METHOD
	Area %	
α-pinene	1.06	ARL-TM101-3*
sabinene	0.11	
β-pinene	0.54	
myrcene	0.14	
α-phellandrene	0.14	
α-terpinene	0.12	
p-cymene	3.38	
1,8-cineole	89.21	
γ-terpinene	0.15	
terpinolene	0.05	
p-cymenene	0.11	
trans-pinocarveol	0.26	
sabina ketone	0.11	
pinocarvone	0.12	
terpinen-4-ol	0.99	
cryptone	0.30	
α-terpineol	0.39	
myrtenal	0.22	
verbenone	0.12	
trans-carveol	0.06	
cuminaldehyde	0.16	
carvone	0.31	
piperitone	0.07	
phellandral	0.09	
2-oxabicyclo [2.2.2] octan-6-ol, 1,3, 3-trimethyl-, acetate	0.08	
alpha terpinyl acetate	0.45	
δ-cadinene	0.08	
cis-calamenene	0.13	
1-epi-cubenol	0.10	

* Assay by GC (FID detection –area percent report)

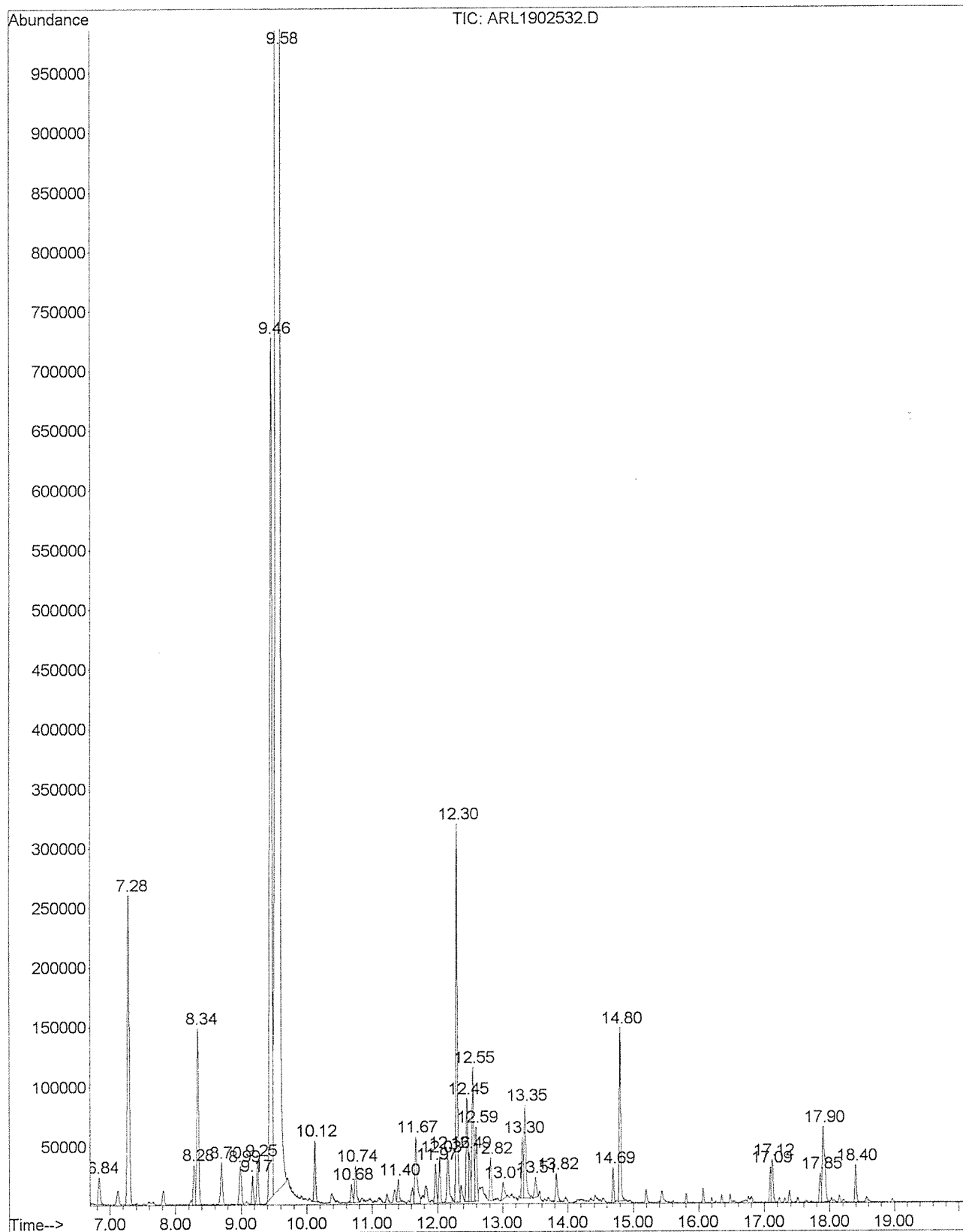


Ms Anastasia Whitehall
LABORATORY ASSISTANT



Ashley Dowell
MANAGER - ARL

File :D:\Data\190506\ARL1902532.D
Operator : Anastasia Whitehall
Acquired : 6 May 2019 13:42 using AcqMethod GCMS-COMPOSITIONAL.
Instrument : Instrument #1
Sample Name: Eucalyptus polybractea 19567A
Misc Info :
Vial Number: 3



6/19
20/5/19

Library Search Report

Data Path : D:\Data\190506\
 Data File : ARL1902532.D
 Acq On : 6 May 2019 13:42
 Operator : Anastasia Whitehall
 Sample : Eucalyptus polybractea 19567A
 Misc :
 ALS Vial : 3 Sample Multiplier: 1

Search Libraries: C:\Database\ESSOILS.L Minimum Quality: 60
 C:\Database\ADAMS.L Minimum Quality: 60
 C:\Database\NIST14.L

Unknown Spectrum: Apex
 Integration Events: Chemstation Integrator - AUTOINT1.E

Pk#	RT	Area%	Library/ID	Ref#	CAS#	Qual
2	7.28	1.06	C:\Database\ESSOILS.L PINENE-A	2	000080-56-8	96
3	8.28	0.11	C:\Database\ESSOILS.L SABINENE	3	003387-41-5	91
4	8.34	0.54	C:\Database\ESSOILS.L PINENE-B	4	000127-91-3	96
5	8.70	0.14	C:\Database\ESSOILS.L MYRCENE	5	000123-35-3	90
6	8.99	0.14	C:\Database\ESSOILS.L PHELLANDRENE-A	6	000099-83-2	90
8	9.25	0.12	C:\Database\ESSOILS.L TERPINENE-A	7	000099-86-5	97
9	9.46	3.38	C:\Database\ESSOILS.L CYMENE-P	8	000099-87-6	97
10	9.58	89.21	C:\Database\ESSOILS.L CINEOLE-1,8	11	000470-82-6	98
11	10.12	0.15	C:\Database\ESSOILS.L TERPINENE-G	12	000099-85-4	91
12	10.68	0.05	C:\Database\ESSOILS.L TERPINOLENE	13	000586-62-9	93
13	10.74	0.11	C:\Database\ESSOILS.L CYMENENE-PARA	235	001195-32-0	97
15	11.67	0.26	C:\Database\ESSOILS.L PINOCARVEOL - TRANS	259	000547-61-5	74
16	11.97	0.11	C:\Database\ESSOILS.L SABINA KETONE	1253	000513-20-2	93
17	12.03	0.12	C:\Database\ESSOILS.L PINOCARVONE	256	016812-40-1	80
19	12.30	0.99	C:\Database\ESSOILS.L TERPINEN-4-OL	18	000562-74-3	98
20	12.45	0.30	C:\Database\ESSOILS.L CRYPTONE	353	000500-02-7	86
22	12.55	0.39	C:\Database\ESSOILS.L TERPINEOL - A	19	1000157-89-9	91

4/3
20/5/19

23	12.59	0.22	C:\Database\ESSOILS.L MYRTENAL	356 000564-94-3	91
24	12.82	0.12	C:\Database\ESSOILS.L VERBENONE	272 000080-57-9	90
25	13.01	0.06	C:\Database\ESSOILS.L CARVEOL-TRANS	111 001197-07-5	96
26	13.30	0.16	C:\Database\ESSOILS.L CUMINALDEHYDE	70 000122-03-2	96
27	13.34	0.31	C:\Database\ESSOILS.L CARVONE	114 002244-16-8	98
28	13.50	0.07	C:\Database\ESSOILS.L PIPERITONE	53 000089-81-6	91
29	13.82	0.09	C:\Database\ESSOILS.L PHELLANDRAL	357 021391-98-0	96
30	14.69	0.08	C:\Database\NIST14.L 2-Oxabicyclo[2.2.2]octan-6-ol, 1,3 ,3-trimethyl-, acetate	76076 057709-95-2	96
31	14.80	0.45	C:\Database\ESSOILS.L ALPHA TERPINYL ACETATE	1483 000080-26-2	91
32	17.09	0.08	C:\Database\ESSOILS.L CADINENE-D	25 000483-76-1	98
33	17.12	0.13	C:\Database\ESSOILS.L CALAMENENE - CIS	185 000483-77-2	93
36	18.40	0.10	C:\Database\ESSOILS.L CUBENOL 1 EPI	604 019912-67-5	81

GCMS-COMPOSITIONAL.M Fri May 10 15:10:29 2019

4/3
20(5/19)

Library Search Report

Data Path : D:\Data\190506\
Data File : ARL1902532.D
Acq On : 6 May 2019 13:42
Operator : Anastasia Whitehall
Sample : Eucalyptus polybractea 19567A
Misc :
ALS Vial : 3 Sample Multiplier: 1

Search Libraries: C:\Database\ESSOILS.L Minimum Quality: 60
C:\Database\ADAMS.L Minimum Quality: 60
C:\Database\NIST14.L

Unknown Spectrum: Apex
Integration Events: Chemstation Integrator - AUTOINT1.E

Pk#	RT	Area%	Library/ID	Ref#	CAS#	Qual
1	6.84	0.09	C:\Database\ESSOILS.L			
			ISO BUTYRATE, ISO - BUTYL	841	000097-85-8	78
			HEXYL BUTYRATE	308	002639-63-6	72
			BUTYL ISOBUTYRATE	1305	000097-87-0	56
2	7.28	1.06	C:\Database\ESSOILS.L			
			PINENE-A	2	000080-56-8	96
			TRICYCLEN	56	000508-32-7	91
			OCIMENE-CIS-B	38	003338-55-4	64
3	8.28	0.11	C:\Database\ESSOILS.L			
			PHELLANDRENE - BETA	374	000555-10-2	91
			SABINENE	3	003387-41-5	91
			PINENE-B	4	000127-91-3	64
4	8.34	0.54	C:\Database\ESSOILS.L			
			PINENE-B	4	000127-91-3	96
			TRICYCLEN	56	000508-32-7	91
			MYRCENE	5	000123-35-3	72
5	8.70	0.14	C:\Database\ESSOILS.L			
			MYRCENE	5	000123-35-3	90
			PINENE-B	4	000127-91-3	60
			TRICYCLEN	56	000508-32-7	50
6	8.99	0.14	C:\Database\ESSOILS.L			
			THUJENE-A	1	002867-05-2	91
			PHELLANDRENE-A	6	000099-83-2	90
			PHELLANDRENE - BETA	374	000555-10-2	50
7	9.17	0.07	C:\Database\ESSOILS.L			
			ISO BUTYRATE, AMYL (PENTYL)	848	002445-72-9	78
			BUTYL ACETATE, 2 - METHYL	840	000624-41-9	9
			ISO AMYL ACETATE	839	000123-92-2	9
8	9.25	0.12	C:\Database\ESSOILS.L			
			TERPINENE-A	7	000099-86-5	97
			P - MENTHA 2,4 DIENE (ISOTERPINOLE NE)	505	000586-63-0	91
			IRONE, ALPHA	1272	000079-69-6	78
9	9.46	3.38	C:\Database\ESSOILS.L			
			CYMENE-P	8	000099-87-6	97
			M-CYMENE	519	000535-77-3	95
			CYCLOHEPTA 1,3,5 TRIENE, 3,7,7 TRI MEHTYL	1459	003479-89-8	90
10	9.58	89.21	C:\Database\ESSOILS.L			
			CINEOLE-1,8	11	000470-82-6	98
			1, 4, CINEOLE	232	000470-67-7	30
			1,3 DI METHOXY PYROGALLOL	470	000091-10-1	27

848
20/5/19

11	10.12	0.15	C:\Database\ESSOILS.L				
			TERPINENE-G	12	000099-85-4	91	
			PELLANDRENE-A	6	000099-83-2	83	
			TRICYCLEN	56	000508-32-7	83	
12	10.68	0.05	C:\Database\ESSOILS.L				
			TERPINOLENE	13	000586-62-9	93	
			PINENE-A	2	000080-56-8	90	
			ELEMENE-DELTA	636	020307-84-0	86	
13	10.74	0.11	C:\Database\ESSOILS.L				
			CYMENENE-PARA	235	001195-32-0	97	
			META CYMENENE	1303	001124-20-5	93	
			DIMETHYL BENZYL CARBINYL ACETATE	1368	000151-05-3	25	
14	11.40	0.07	C:\Database\NIST14.L				
			Cyclohexane,ethenylidene-	5543	005664-20-0	58	
			.alpha.-Campholenal	25862	004501-58-0	58	
			.alpha.-Campholenal	25863	004501-58-0	52	
15	11.67	0.26	C:\Database\ESSOILS.L				
			PINOCARVEOL - TRANS	259	000547-61-5	74	
			SABINOL - CIS	1158	003310-02-9	46	
			BETA PHELLANDRENE EPOXIDE	687	000097-97-1	23	
16	11.97	0.11	C:\Database\ESSOILS.L				
			SABINA KETONE	1253	000513-20-2	93	
			P-MENTH 8 ENE, TRANS	1326	000087-87-3	50	
			CRYPTONE	353	000500-02-7	43	
17	12.03	0.12	C:\Database\ESSOILS.L				
			PINOCARVONE	256	016812-40-1	80	
			BENZYL ACETATE	482	000140-11-4	11	
			TERPINEN - 1 - OL	237	000586-82-3	1	
18	12.16	0.19	C:\Database\NIST14.L				
			Cyclohexanemethanol, .alpha.,.alph	27834	007299-42-5	43	
			a.-dimethyl-4-methylene-				
			1-Chloro-2-methyl-2-propanol	5374	000558-42-9	38	
			7-Octen-2-ol, 2-methyl-6-methylene	27650	000543-39-5	37	
19	12.30	0.99	C:\Database\ESSOILS.L				
			TERPINEN-4-OL	18	000562-74-3	98	
			ISO - LIMONENE	1230	005113-87-1	25	
			PHYTOL	828	000150-86-7	10	
20	12.45	0.30	C:\Database\ESSOILS.L				
			CRYPTONE	353	000500-02-7	86	
			P-MENTH 8 ENE, TRANS	1326	000087-87-3	43	
			P-MENTH 8 ENE, CIS	1325	001879-07-8	32	
21	12.49	0.14	C:\Database\ESSOILS.L				
			P - CYMEN - 8 - OL	258	001197-01-9	64	
			CARVACROL	103	000499-75-2	43	
			THYMOL	102	000089-83-8	43	
22	12.55	0.39	C:\Database\ESSOILS.L				
			TERPINEOL - A	19	1000157-89-9	91	
			TERPINENE-A	7	000099-86-5	55	
			PINENE-B	4	000127-91-3	55	
23	12.59	0.22	C:\Database\ESSOILS.L				
			MYRTENAL	356	000564-94-3	91	
			GAMMA TERPINEN-7-AL	893	022580-90-1	64	
			CARYOPHYLLENE OXIDE	104	001139-30-6	42	
24	12.82	0.12	C:\Database\ESSOILS.L				
			VERBENONE	272	000080-57-9	90	
			GAMMA TERPINEN-7-AL	893	022580-90-1	76	
			TRANS - OCIMENONE	525	033746-72-4	46	

4/13
20/5/19

25	13.01	0.06	C:\Database\ESSOILS.L CARVEOL-TRANS PHELLANDRAL LINALYL ACETATE, DIHYDRO	111 357 1239	001197-07-5 021391-98-0 108597-90-6	96 58 47
26	13.30	0.16	C:\Database\ESSOILS.L CUMINALDEHYDE ANETHOLE - (Z) - CIS ANETHOLE - (E) - TRANS	70 224 223	000122-03-2 025679-28-1 000104-46-1	96 25 9
27	13.34	0.31	C:\Database\ESSOILS.L CARVONE ISO - PIPERITENONE CINEOLE - 2 -OXO	114 289 879	002244-16-8 016750-82-6 000057-57-2	98 35 1
28	13.50	0.07	C:\Database\ESSOILS.L PIPERITONE CARVOTANACETONE ALPHA THUJONE	53 251 479	000089-81-6 000499-71-8 000546-80-5	91 27 12
29	13.82	0.09	C:\Database\ESSOILS.L PHELLANDRAL 2,3 DEHYDRO 1,8 CINEOLE CARVEOL-TRANS	357 526 111	021391-98-0 092760-25-3 001197-07-5	96 53 49
30	14.69	0.08	C:\Database\NIST14.L 2-Oxabicyclo[2.2.2]octan-6-ol, 1,3 ,3-trimethyl-, acetate 2-Oxabicyclo[2.2.2]octan-6-ol, 1,3 ,3-trimethyl-, acetate 2-Oxabicyclo[2.2.2]octan-6-ol, 1,3 ,3-trimethyl-, acetate	76076 76075 76073	057709-95-2 057709-95-2 057709-95-2	96 94 64
31	14.80	0.45	C:\Database\ESSOILS.L ALPHA TERPINYL ACETATE TERPINOLENE IONONE, TRANS ALPHA	1483 13 905	000080-26-2 000586-62-9 000127-41-3	91 83 78
32	17.09	0.08	C:\Database\ESSOILS.L CADINENE-D CAROTA 5,8 DIENE 7-ALPHA-H, 10-BETA-H CADINAL(6),4 DIENE	25 1085 405	000483-76-1 000027-27-3 016729-00-3	98 90 68
33	17.12	0.13	C:\Database\ESSOILS.L CALAMENENE - CIS CALAMENENE, TRANS AROMADENDRA 4,9 DIENE	185 732 1051	000483-77-2 072937-55-4 000009-09-3	93 52 23
34	17.85	0.08	C:\Database\NIST14.L (-)-Spathulenol 1H-Cycloprop[e]azulen-7-ol, decahy dro-1,1,7-trimethyl-4-methylene-, [1ar-(1a.alpha.,4a.alpha.,7.beta., 7a.beta.,7b.alpha.)]- Methyldivinylphenylsilane	83496 83704 42959	077171-55-2 006750-60-3 017983-32-3	47 43 38
35	17.90	0.32	C:\Database\ESSOILS.L CARYOPHYLLENE OXIDE ISO - LIMONENE AMBRINOL, CIS ALPHA	104 1230 1275	001139-30-6 005113-87-1 000068-68-3	70 45 38
36	18.40	0.10	C:\Database\ESSOILS.L CUBENOL 1 EPI CUBENOL, 1,10 DI-EPI ISO - LEDENE(2)	604 861 198	019912-67-5 073365-77-2 1000156-10-8	81 64 53