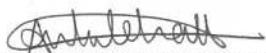


CERTIFICATE OF ANALYSIS

SAMPLE NAME		Patchouli Oil - Pogostemon cablin	
FORM		Essential oil	
CUSTOMER NAME		Sacred Soul Holistics	
CERTIFICATION DATE		21 May 2019	
CUSTOMER REFERENCE			
ARL JOB #	A190980	LAB REF. #	ARL1902535
ANALYSIS	GCMS - Compositional (LEVEL 1)	METHOD	ARL-TM101

TEST	RESULTS	TEST METHOD
	Area %	
α -pinene	0.04	ARL-TM101-3*
β -pinene	0.09	
δ -elemene	0.14	
eugenol	0.06	
α -copaene	0.81	
β -patchoulene	3.16	
β -elemene	1.25	
α -gurjunene	0.13	
cycloseychellene	0.72	
caryophyllene	3.65	
α -guaiene	13.34	
seychellene	7.31	
α -humelene	0.69	
α -patchoulene	5.18	
δ -patchoulene	2.10	
γ -patchoulene	1.05	
aciphyllene	3.80	
α -bulnesene	15.63	
nor-patchoulenol	0.68	
pogostone	0.70	
pogostol	2.43	
patchouli alcohol	27.68	

* Assay by GC (FID detection –area percent report)

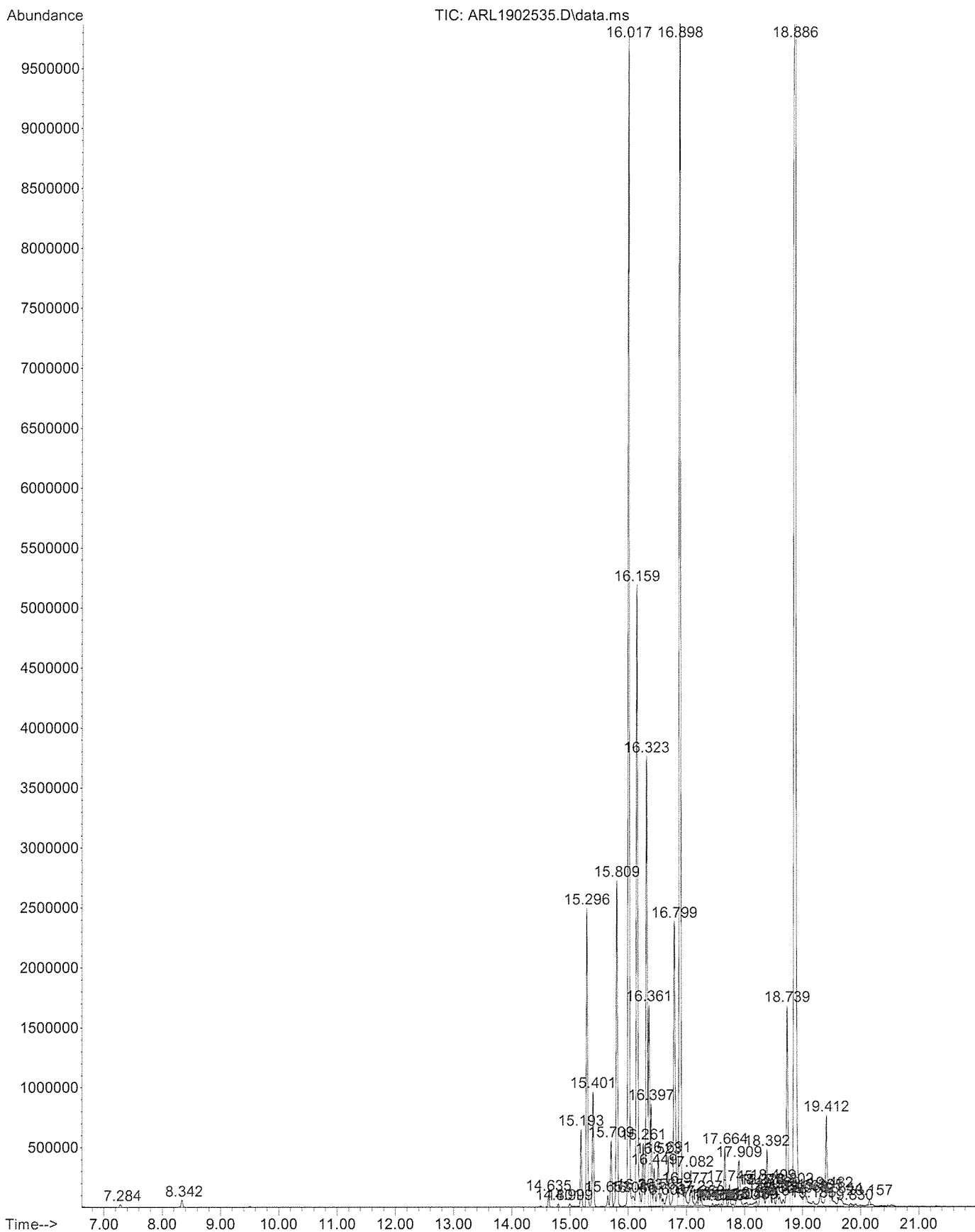


Ms Anastasia Whitehall
LABORATORY ASSISTANT



Ashley Dowell
MANAGER - ARL

File :W:\SCPS\Analytical\LabDATA\GCMS-3\Data\190506\ARL1902535.D
Operator : Anastasia Whitehall
Acquired : 6 May 2019 17:38 using AcqMethod GCMS-COMPOSITIONAL.M
Instrument : Instrument #1
Sample Name: Patchouli Oil- Pogostemon cablin
Misc Info :
Vial Number: 6



Library Search Report

Data Path : W:\SCPS\Analytical\LabDATA\GCMS-3\Data\190506\
Data File : ARL1902535.D
Acq On : 6 May 2019 17:38
Operator : Anastasia Whitehall
Sample : Patchouli Oil- Pogostemon cablin
Misc :
ALS Vial : 6 Sample Multiplier: 1

Search Libraries: C:\Database\ESSOILS.L Minimum Quality: 60
C:\Database\ADAMS.L Minimum Quality: 60
C:\Database\NIST14.L

Unknown Spectrum: Apex
Integration Events: Chemstation Integrator - AUTOINT1.E

Pk#	RT	Area%	Library/ID	Ref#	CAS#	Qual
1	7.286	0.04	C:\Database\ESSOILS.L PINENE-A	2	000080-56-8	95
2	8.341	0.09	C:\Database\ESSOILS.L PINENE-B	4	000127-91-3	94
3	14.635	0.14	C:\Database\ESSOILS.L ELEMENE-DELTA	636	020307-84-0	91
5	14.998	0.06	C:\Database\ESSOILS.L EUGENOL	62	000097-53-0	97
6	15.193	0.81	C:\Database\ESSOILS.L COPAENE - ALPHA	257	003856-25-5	91
7	15.297	3.16	C:\Database\ESSOILS.L PATCHOULENE - BETA	196	000514-51-2	98
8	15.402	1.25	C:\Database\ESSOILS.L ELEMENE - B	151	110823-68-2	91
9	15.653	0.13	C:\Database\ESSOILS.L GURJUNENE - A	187	000489-40-7	99
10	15.709	0.72	C:\Database\ESSOILS.L CYCLOSEYCHELLENE	1148	052617-34-2	99
11	15.810	3.65	C:\Database\ESSOILS.L CARYOPHYLLENE	27	000087-44-5	99
12	16.016	13.34	C:\Database\ESSOILS.L GUAIENE - A	197	003691-12-1	87
14	16.158	7.31	C:\Database\ESSOILS.L SEYCHELLENE	813	020085-93-2	99
16	16.259	0.69	C:\Database\ESSOILS.L HUMULENE	29	006753-98-6	70
17	16.323	5.18	C:\Database\ESSOILS.L PATCHOULENE - ALPHA	814	000560-32-7	99
18	16.360	2.10	C:\Database\ESSOILS.L PATCHOULENE - DELTA	1333	000090-90-3	99
19	16.398	1.05	C:\Database\ESSOILS.L PATCHOULENE - GAMMA	815	000508-55-4	99
25	16.798	3.80	C:\Database\ESSOILS.L ACIPHYLLENE	816	087745-31-1	99
26	16.899	15.63	C:\Database\ESSOILS.L GUAIENE - DELTA (ALPHA-BULNESENE)	315	003691-11-0	99

4/3
20/5/19

36	17.662	0.68	C:\Database\ESSOILS.L NOR-PATCHOULENOL	1332	000089-89-3	99
45	18.392	0.70	C:\Database\ESSOILS.L POGOSTONE	1331	000088-88-3	94
51	18.740	2.43	C:\Database\ESSOILS.L POGOSTOL	818	021698-41-9	95
53	18.886	27.68	C:\Database\ESSOILS.L PATCHOULI ALCOHOL	92	005986-55-0	93

GCMS-COMPOSITIONAL.M Tue May 21 14:47:15 2019

Y/B
20/5/19

Library Search Report

Data Path : W:\SCPS\Analytical\LabDATA\GCMS-3\Data\190506\
Data File : ARL1902535.D
Acq On : 6 May 2019 17:38
Operator : Anastasia Whitehall
Sample : Patchouli Oil- Pogostemon cablin
Misc :
ALS Vial : 6 Sample Multiplier: 1

Search Libraries: C:\Database\ESSOILS.L Minimum Quality: 60
C:\Database\ADAMS.L Minimum Quality: 60
C:\Database\NIST14.L

Unknown Spectrum: Apex
Integration Events: Chemstation Integrator - AUTOINT1.E

Pk#	RT	Area%	Library/ID	Ref#	CAS#	Qual
1	7.286	0.04	C:\Database\ESSOILS.L			
			PINENE-A	2	000080-56-8	95
			TRICYCLENENE	56	000508-32-7	91
			TERPINENE-G	12	000099-85-4	87
2	8.341	0.09	C:\Database\ESSOILS.L			
			PINENE-B	4	000127-91-3	94
			TRICYCLENENE	56	000508-32-7	90
			PINENE-A	2	000080-56-8	86
3	14.635	0.14	C:\Database\ESSOILS.L			
			TERPINENE-A	7	000099-86-5	91
			ELEMENE-DELTA	636	020307-84-0	91
			TERPINOLENE	13	000586-62-9	89
4	14.800	0.04	C:\Database\ESSOILS.L			
			CAROTA 5,8 DIENE	1085	000027-27-3	89
			COPAENE - ALPHA	257	003856-25-5	83
			CUBEBENE-ALPHA	31	017699-14-8	80
5	14.998	0.06	C:\Database\ESSOILS.L			
			EUGENOL	62	000097-53-0	97
			EUGENOL-ISO-E	88	000097-54-1	93
			EUGENOL-ISO-Z	93	005912-86-7	93
6	15.193	0.81	C:\Database\ESSOILS.L			
			CUBEBENE-ALPHA	31	017699-14-8	91
			COPAENE - ALPHA	257	003856-25-5	91
			MUUROLENE - GAMMA	395	030021-74-0	59
7	15.297	3.16	C:\Database\ESSOILS.L			
			PATCHOULENE - BETA	196	000514-51-2	98
			MAALIENE - GAMMA	493	000643-29-8	80
			ZONARENE	409	149115-45-7	70
8	15.402	1.25	C:\Database\ESSOILS.L			
			ELEMENE - B	151	110823-68-2	91
			GERMACRENE A	593	028387-44-2	86
			TRANS BETA BERGAMOTENE	497	035334-59-9	38
9	15.653	0.13	C:\Database\ESSOILS.L			
			GUAIENE-GAMMA	637	072704-03-1	99
			GURJUNENE - A	187	000489-40-7	99
			GUAIADIENE, 6,9	69	036577-33-0	93
10	15.709	0.72	C:\Database\ESSOILS.L			
			CYCLOSEYCHELLENE	1148	052617-34-2	99
			CITRAL, PHOTO A	668	055253-27-5	9
11	15.810	3.65	C:\Database\ESSOILS.L			
			CARYOPHYLLENE	27	000087-44-5	99
			CARYOPHYLLENE, 2-EPI BETA	1270	182368-70-3	87
			CARYOPHYLLENE - GAMMA	188	000118-65-0	76

g/b
20/5/19

12	16.016	13.34	C:\Database\ESSOILS.L				
			GUAIENE - A	197	003691-12-1	87	
			GUAIENE - DELTA (ALPHA-BULNESENE)	315	003691-11-0	52	
			ARISTOLENE	1010	027862-07-3	46	
13	16.083	0.19	C:\Database\NIST14.L				
			.alpha.-Guaiene	68545	003691-12-1	92	
			1H-Indene, 2,3,3a,4-tetrahydro-3,3	68735	059742-39-1	80	
			a,6-trimethyl-1-(1-methylethyl)-				
			Bicyclo[2.2.1]heptane, 2-methylene	23481	077764-41-1	60	
			-3-(1-methylethenyl)-				
14	16.158	7.31	C:\Database\ESSOILS.L				
			SEYCHELLENE	813	020085-93-2	99	
			ANISOLE, 2-METHYL	694	000578-58-5	9	
			m - HYDROXY BENZALDEHYDE	569	000100-83-4	9	
15	16.203	0.13	C:\Database\ESSOILS.L				
			GURJUNENE-A	120	000489-40-7	96	
			CIS ALPHA BISABOLENE	500	029837-07-8	83	
			AROMADENDRENE - ALLO - 9	993	000088-88-2	58	
16	16.259	0.69	C:\Database\ESSOILS.L				
			HUMULENE	29	006753-98-6	70	
			SANTOLINA TRIENE	1112	002153-66-4	58	
			LINALYL ACETATE	1262	000115-95-7	53	
17	16.323	5.18	C:\Database\ESSOILS.L				
			PATCHOULENE - ALPHA	814	000560-32-7	99	
			SATIVENE	443	003650-28-0	38	
			GERMACRONE	809	006902-91-6	37	
18	16.360	2.10	C:\Database\ESSOILS.L				
			PATCHOULENE - DELTA	1333	000090-90-3	99	
			GUAIADIENE, 6,9	69	036577-33-0	93	
			PATCHOULENE - GAMMA	815	000508-55-4	64	
19	16.398	1.05	C:\Database\ESSOILS.L				
			PATCHOULENE - GAMMA	815	000508-55-4	99	
			AROMADENDR-9-ENE	189	085048-01-7	94	
			PATCHOULENE - DELTA	1333	000090-90-3	91	
20	16.450	0.43	C:\Database\ESSOILS.L				
			CARYOPHYLLENE, 2-EPI BETA	1270	182368-70-3	99	
			CARYOPHYLLENE	27	000087-44-5	74	
			AROMADENDRENE-ALLO	28	025246-27-9	70	
21	16.521	0.66	C:\Database\NIST14.L				
			.alpha.-Guaiene	68545	003691-12-1	83	
			.beta.-Humulene	68535	000116-04-1	78	
			.alpha.-Guaiene	68534	003691-12-1	58	
22	16.566	0.15	C:\Database\ESSOILS.L				
			AMORPHA 4,7(11) DIENE	1413	000012-12-4	95	
			FARNESENE Z,E ALPHA	496	026560-14-5	89	
			GURJUNENE - A	187	000489-40-7	70	
23	16.603	0.09	C:\Database\ESSOILS.L				
			GERMACRENE D	67	023986-74-5	98	
			CADINENE-G	68	039029-41-9	93	
			CUBEBENE - BETA	346	013744-15-5	90	
24	16.690	0.65	C:\Database\ESSOILS.L				
			GUAIENE -CIS - BETA	935	000088-84-6	91	
			MAALIENE BETA	91	000489-29-2	90	
			LEDENE	216	021747-46-6	89	
25	16.798	3.80	C:\Database\ESSOILS.L				
			ACIPHYLLENE	816	087745-31-1	99	
			PATCHOULENE - GAMMA	815	000508-55-4	90	
			GUAIENE -CIS - BETA	935	000088-84-6	78	
26	16.899	15.63	C:\Database\ESSOILS.L				

6/8
20/5/19

			GUAIENE - DELTA (ALPHA-BULNESENE)	315	003691-11-0	99
			POGOSTOL	818	021698-41-9	72
			SELINENE - B	148	1000152-04-3	58
27	16.978	0.29	C:\Database\ESSOILS.L			
			ZONARENE	409	149115-45-7	87
			CAROTA 5,8 DIENE	1085	000027-27-3	58
			NUCIFEROL - Z - ACETATE	403	000044-44-1	47
28	17.082	0.50	C:\Database\ESSOILS.L			
			MAALIENE - ALPHA	408	000489-28-1	90
			MUUROLENE - GAMMA	395	030021-74-0	83
			EPI-BICYCLO-SESQUIPELLANDRENE	373	054324-03-7	70
29	17.180	0.06	C:\Database\ESSOILS.L			
			GORGONA 1,4(15),11 TRIENE	597	000097-98-2	93
			AROMADENDRA 4,9 DIENE	1051	000009-09-3	70
			ARISTOLANE, 1,2,9,10 TETRA DEHYDRO	1411	034143-96-9	64
30	17.228	0.11	C:\Database\ESSOILS.L			
			CAROTA 5,8 DIENE	1085	000027-27-3	86
			7-ALPHA-H, 10-BETA-H CADINA1(6),4 DIENE	405	016729-00-3	50
			CADINA 3,5 DIENE	406	004726-51-1	47
31	17.258	0.06	C:\Database\NIST14.L			
			Silphiperfol-4,7(14)-diene	66848	210637-49-3	49
			4,4-Dimethyl-3-(3-methylbut-3-enyl idene)-2-methylenebicyclo[4.1.0]he ptane	66881	079718-83-5	47
			Aromadendrene, dehydro-	66844	1000156-12-5	42
32	17.453	0.03	C:\Database\ESSOILS.L			
			MAALIENE - GAMMA	493	000643-29-8	70
			HEDYCARYOL	83	1000122-12-6	62
			ELEMOL	84	000369-99-6	62
33	17.509	0.02	C:\Database\NIST14.L			
			Bicyclo[3.1.1]heptane, 6,6-dimethy l-3-methylene-	16259	016022-04-1	43
			Silane, phenyl-	5455	000694-53-1	35
			Bicyclo[2.2.1]heptane, 2,2-dimethy l-3-methylene-, (1R)-	16284	005794-03-6	30
34	17.558	0.03	C:\Database\ESSOILS.L			
			SELINENE - B	148	1000152-04-3	95
			GUAIENE - CIS - BETA	935	000088-84-6	95
			GERMACRENE B	396	015423-57-1	81
35	17.603	0.02	C:\Database\ESSOILS.L			
			GURJUNENE-A	120	000489-40-7	83
			GURJUNENE - A	187	000489-40-7	55
			PATCHOULENE - DELTA	1333	000090-90-3	50
36	17.662	0.68	C:\Database\ESSOILS.L			
			NOR-PATCHOULENOL	1332	000089-89-3	99
			POLYGODIAL, 9 - EPI	1365	000098-98-3	16
			POLYGODIAL	1366	006754-20-7	12
37	17.745	0.25	C:\Database\ESSOILS.L			
			AROMADENDRENE EPOXIDE(II)	1334	085710-39-0	64
			HIMACHALOL - ALLO	1047	000006-06-3	38
			GLOBULOL	23	000489-41-8	25
38	17.909	0.91	C:\Database\ESSOILS.L			
			COSTOL - BETA	218	065018-15-6	64
			AMORPHA-4,7(11) DIENE 9-ALPHA HYDR OXY	1079	000024-24-3	45
			VIRIDIFLOROL, - 4 - DEHYDRO	998	000093-92-2	35
39	17.999	0.03	C:\Database\ESSOILS.L			
			VALENCENE	1259	004630-07-3	64
			COPAENE - 8 - OL , ALPHA	606	058569-25-8	43

6/4/0
20/7/19

		AROMADENDRENE	26	025246-27-9	40
40	18.040	0.07 C:\Database\ESSOILS.L			
		AROMADENDR-9-ENE	189	085048-01-7	84
		GUAIADIENE, 6, 9	69	036577-33-0	50
		LEDENE-ISO	119	1000156-10-8	46
41	18.179	0.04 C:\Database\ESSOILS.L			
		SELINENE - A	149	1000193-57-0	81
		GERMACRENE A	593	028387-44-2	70
		MAALIENE - GAMMA	493	000643-29-8	42
42	18.205	0.06 C:\Database\ESSOILS.L			
		HUMULENE - 1,2 - EPOXIDE	336	019888-34-7	87
		CRYPTONE	353	000500-02-7	49
		TRANS - P - MENTHA 1(7), 8 DIEN 2 O	582	002102-62-7	38
43	18.280	0.30 C:\Database\ESSOILS.L			
		AROMADENDRENE EPOXIDE(II)	1334	085710-39-0	99
		COSTOL - BETA	218	065018-15-6	93
		COSTOL - GAMMA	219	065018-14-6	64
44	18.321	0.26 C:\Database\ESSOILS.L			
		AROMADENDRENE-ALLO	28	025246-27-9	90
		EPI-GLOBULOL	361	000552-02-3	30
		CYCLOSEYCHELLENE	1148	052617-34-2	22
45	18.392	0.70 C:\Database\ESSOILS.L			
		POGOSTONE	1331	000088-88-3	94
		GLOBULOL	23	000489-41-8	78
		ACIPHYLLENE	816	087745-31-1	64
46	18.441	0.18 C:\Database\NIST14.L			
		(-)-Spathulenol	83504	077171-55-2	83
		1,1,4,7-Tetramethyldecahydro-1H-cy	100401	1212211-43-2	70
		clopropa[e]azulene-4,7-diol			
		6-Isopropenyl-4,8a-dimethyl-1,2,3,	83643	1000189-10-2	60
		5,6,7,8,8a-octahydro-naphthalen-2-			
		ol			
47	18.501	0.27 C:\Database\ESSOILS.L			
		GLOBULOL	23	000489-41-8	70
		POGOSTOL	818	021698-41-9	64
		EPI-GLOBULOL	361	000552-02-3	50
48	18.568	0.21 C:\Database\ESSOILS.L			
		FARNESENE Z, E ALPHA	496	026560-14-5	93
		VALENCENE	1259	004630-07-3	92
		GUAIENE-GAMMA	637	072704-03-1	86
49	18.609	0.13 C:\Database\ESSOILS.L			
		GLOBULOL	280	000489-41-8	89
		VALENCENE	1259	004630-07-3	78
		SELINENE - B	148	1000152-04-3	78
50	18.669	0.10 C:\Database\ESSOILS.L			
		PALUSTROL (LEDOL)	440	005986-49-2	81
		CARYOPHYLLENLY ALCOHOL - ALPHA	585	004586-22-5	25
		CRYPTONE, 4-HYDROXY	689	000098-98-1	9
51	18.740	2.43 C:\Database\ESSOILS.L			
		POGOSTOL	818	021698-41-9	95
		GURJUNENE - GAMMA	1050	022567-17-5	81
		ACIPHYLLENE	816	087745-31-1	64
52	18.804	0.29 C:\Database\ESSOILS.L			
		SELINA 5,11 DIENE	407	000045-45-1	93
		EUDESMA 6,11 DIENE - TRANS	608	027104-12-7	47
		PALUSTROL (LEDOL)	440	005986-49-2	38
53	18.886	27.68 C:\Database\ESSOILS.L			
		PATCHOULI ALCOHOL	92	005986-55-0	93
		PHENOL, 3-METHOXY, 2-METHYL	1128	006971-52-4	10

6/6
20/5/10

54	19.040	0.19	C:\Database\ESSOILS.L				
			CALACORENE EPOXIDE	1335	034717-35-6	98	
			ARISTOLOCHENE - 5 - EPI	975	000084-84-2	83	
			AROMADENDRENE	26	025246-27-9	80	
55	19.066	0.19	C:\Database\ESSOILS.L				
			CALACORENE EPOXIDE	1335	034717-35-6	89	
			AROMADENDRENE-ALLO	28	025246-27-9	84	
			SELINENE - B	148	1000152-04-3	60	
56	19.186	0.08	C:\Database\ADAMS.L				
		34.42	Aromadendrene epoxide-<allo-	107	085760-81-2	93	
		22.20	Silphiperfol-5-ene<7-epi->	637	138752-23-5	47	
		35.68	Cedranol<5-iso->	402	013567-45-8	43	
57	19.305	0.24	C:\Database\ADAMS.L				
		39.48	Cyclocolorenone<epi->	1804	001911-75-7	70	
		31.86	Zierone	1847	006754-66-1	43	
		36.56	Cyperotundone	1854	003466-15-7	38	
58	19.414	1.32	C:\Database\NIST14.L				
			4-Hydroxy-6-methyl-3-(4-methylpent	87290	023800-56-8	90	
			anoyl)-2H-pyran-2-one				
			Dehydroacetic Acid	38768	000520-45-6	59	
			Ethanone, 1-(2,4,6-trihydroxypheny	38804	000480-66-0	53	
			l)-				
59	19.481	0.35	C:\Database\NIST14.L				
			4-Hydroxy-6-methyl-3-(4-methylpent	87290	023800-56-8	70	
			anoyl)-2H-pyran-2-one				
			4-Methoxy-2,2,5-trimethylcyclopent	38924	1000185-67-3	60	
			-4-ene-1,3-dione				
			1,2,3-Trimethoxybenzene	38848	000634-36-6	46	
60	19.642	0.28	C:\Database\ESSOILS.L				
			GURJUNENE - A	187	000489-40-7	80	
			HIMACHALA 3(12),4 DIENE	1443	060909-28-6	78	
			GUAIADIENE,6,9	69	036577-33-0	55	
61	19.829	0.05	C:\Database\NIST14.L				
			Bicyclo[2.2.1]heptane-1-carbonitri	45381	088653-54-7	38	
			le, 4,7,7-trimethyl-3-oxo-				
			1,6-Bis[dimethyl(chloromethyl)sily	187529	1000217-07-9	25	
			loxy]hexane				
			5,7-Diamino-1,3-diazaadamantane	38723	152278-05-2	22	
62	20.158	0.08	C:\Database\NIST14.L				
			1,2-Benzisothiazole, 3-methyl-	24231	006187-89-9	41	
			Benzene, 1-isothiocyanato-4-methyl	24237	000622-59-3	38	
			m-Tolyl isothiocyanate	24217	000621-30-7	35	