

TECHNICAL CATALOGUE

MECHANICAL FITTINGS



ITAP SpA, founded in Lumezzane (Brescia) in 1972, is currently one of the leading production companies in Italy of valves, fittings and distribution manifolds for plumbing and heating systems. Thanks to fully automated production processes, with 72 tooling machines and 51 assembly lines, we are able to produce 200,000 pieces per day. Our innate pursuit for innovation and observance of technical regulations is supported by the company certification ISO 9001: 2008. The company has always considered its focus on quality as the main tool to obtain significant business results: today ITAP SpA is proud to offer products bearing the approval of numerous international certifying bodies.





MECHANICAL
FITTINGS

SUITABLE FOR
DOMESTIC WATER
SERVICES, HEATING AND
AIR-CONDITIONING
PLANTS, COMPRESSED
AIR SYSTEMS.

151

3-PIECE STRAIGHT CONNECTOR, FLAT WASHER



SIZE	PRESSURE	CODE	PACKING
1/2"	50bar/725psi	1510012	20/220
3/4"	40bar/580psi	1510034	15/150
1"	40bar/580psi	1510100	12/96
1 1/4"	30bar/435psi	1510114	8/64
1 1/2"	30bar/435psi	1510112	6/30
2"	25bar/362,5psi	1510200	2/26

TECHNICAL SPECIFICATIONS

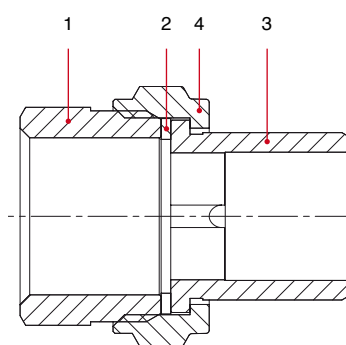
Suitable for domestic water services, heating and air-conditioning plants, compressed air systems.

Body in brass.

Minimum and maximum working temperatures: -20°C, 120°C.

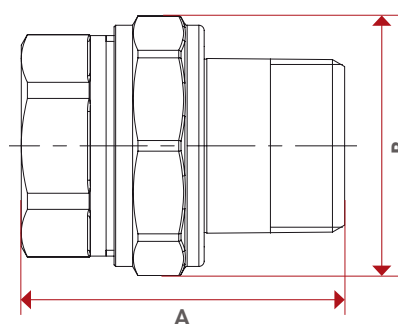
Threads: ISO228 (equivalent to DIN EN ISO 228 and BS EN ISO 228).

MATERIALS



POS.	DESCRIPTION	N.	MATERIAL
1	Straight connector with flat seat	1	Brass CW617N
2	Flat seat washer	1	Fiber
3	Fitting with flat seat	1	Brass CW617N
4	Nut	1	Brass CW617N

OVERALL DIMENSIONS



	1/2"	3/4"	1"	1 1/4"	1 1/2"	2"
DN	15	20	25	32	40	50
A	47	52	61	69,5	74	78
B	33	40,5	49	55	69	87
Kg/cm ² bar	50	40	40	30	30	25
LBS - psi	725	580	580	435	435	362,5

CERTIFICATIONS



152

3-PIECE ELBOW, FLAT WASHER



SIZE	PRESSURE	CODE	PACKING
1/2"	50bar/725psi	1520012	15/240
3/4"	40bar/580psi	1520034	12/96
1"	40bar/580psi	1520100	8/64
1 1/4"	30bar/435psi	1520114	6/48

TECHNICAL SPECIFICATIONS

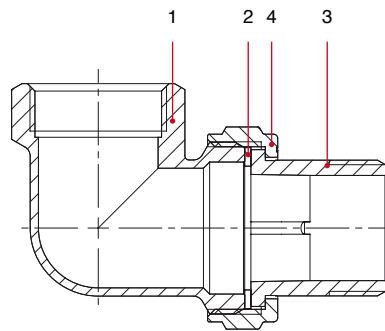
Suitable for domestic water services, heating and air-conditioning plants, compressed air systems.

Body in brass.

Minimum and maximum working temperatures: -20°C, 120°C.

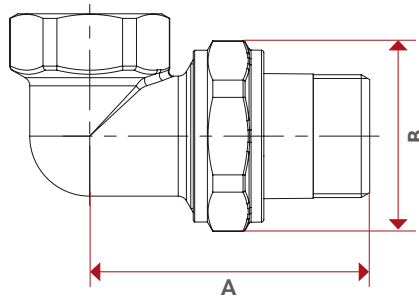
Threads: ISO228 (equivalent to DIN EN ISO 228 and BS EN ISO 228).

MATERIALS



POS.	DESCRIPTION	N.	MATERIAL
1	Elbow adaptor	1	Brass CW617N
2	Flat seat washer	1	Fiber
3	Fitting with flat seat	1	Brass CW617N
4	Nut	1	Brass CW617N

OVERALL DIMENSIONS



	1/2"	3/4"	1"	1 1/4"
DN	15	20	25	32
A	51,5	59,5	70	79,5
B	33	40,5	49	55
Kg/cm ² bar	50	40	40	30
LBS - psi	725	580	580	435

CERTIFICATIONS



161

3-PIECE STRAIGHT CONNECTOR, WITH O-RING



SIZE	PRESSURE	CODE	PACKING
1/2"	50bar/725psi	1610012	20/220
3/4"	40bar/580psi	1610034	15/150
1"	40bar/580psi	1610100	12/96
1 1/4"	30bar/435psi	1610114	8/64
1 1/2"	30bar/435psi	1610112	6/30
2"	25bar/362,5psi	1610200	2/26

TECHNICAL SPECIFICATIONS

Suitable for domestic water services, heating and air-conditioning plants, compressed air systems.

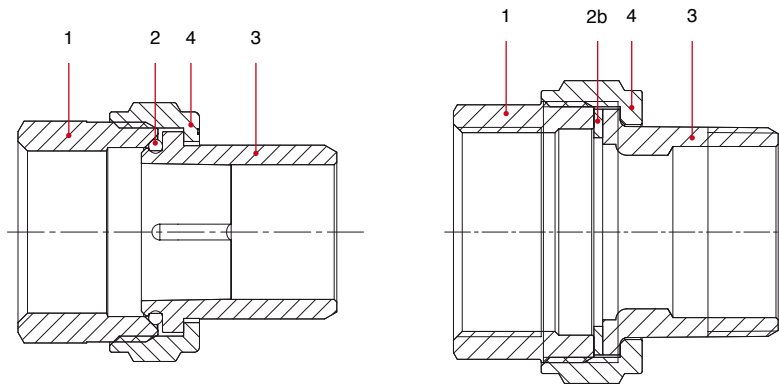
Body in nickel-plated brass.

Minimum and maximum working temperatures: -20°C, 120°C.

Threads: ISO228 (equivalent to DIN EN ISO 228 and BS EN ISO 228).

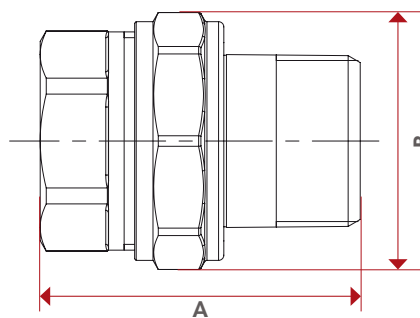
Sizes 1 1/2" and 2" have flat seats.

MATERIALS



POS.	DESCRIPTION	N.	MATERIAL
1	Straight connector	1	Nickel-plated brass CW617N
2	O-Ring	1	NBR
2b	Flat seat washer	1	Fibre
3	Fitting	1	Nickel-plated brass CW617N
4	Nut	1	Nickel-plated brass CW617N

OVERALL DIMENSIONS



	1/2"	3/4"	1"	1 1/4"	1 1/2"	2"
DN	15	20	25	32	40	50
A	46	52	61	68	73,5	78
B	33	40,5	49	55	69	87
Kg/cm ² bar	50	40	40	30	30	25
LBS - psi	725	580	580	435	435	362,5

CERTIFICATIONS



161G

3-PIECE STRAIGHT CONNECTOR, WITH O-RING



SIZE	PRESSURE	CODE	PACKING
1/2"	50bar/725psi	1610012G	20/220
3/4"	40bar/580psi	1610034G	15/150
1"	40bar/580psi	1610100G	12/96
1 1/4"	30bar/435psi	1610114G	8/64

TECHNICAL SPECIFICATIONS

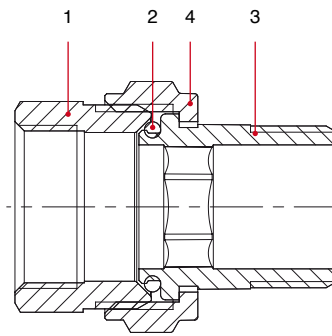
Suitable for domestic water services, heating and air-conditioning plants, compressed air systems.

Body in brass.

Minimum and maximum working temperatures: -20°C, 120°C.

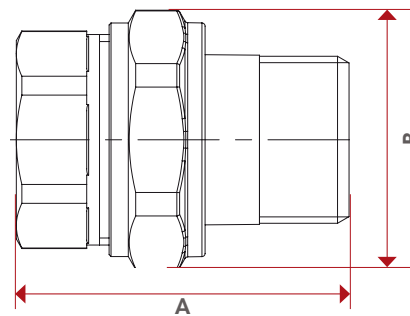
Threads: ISO228 (equivalent to DIN EN ISO 228 and BS EN ISO 228).

MATERIALS



POS.	DESCRIPTION	N.	MATERIAL
1	Straight connector	1	Brass CW617N
2	O-Ring	1	NBR
3	Fitting	1	Brass CW617N
4	Nut	1	Brass CW617N

OVERALL DIMENSIONS



	1/2"	3/4"	1"	1 1/4"
DN	15	20	25	32
A	46	52	61	68
B	33	40,5	49	55
Kg/cm ² bar	50	40	40	30
LBS - psi	725	580	580	435

CERTIFICATIONS



162

3-PIECE ELBOW, WITH O-RING



SIZE	PRESSURE	CODE	PACKING
1/2"	50bar/725psi	1620012	15/240
3/4"	40bar/580psi	1620034	12/96
1"	40bar/580psi	1620100	8/64
1 1/4"	30bar/435psi	1620114	6/48

TECHNICAL SPECIFICATIONS

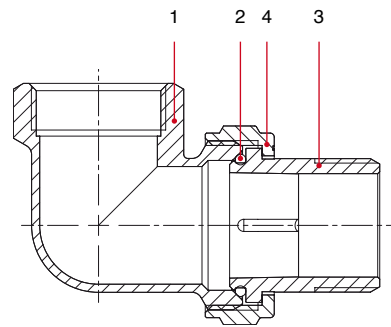
Suitable for domestic water services, heating and air-conditioning plants, compressed air systems.

Body in nickel-plated brass.

Minimum and maximum working temperatures: -20°C, 120°C.

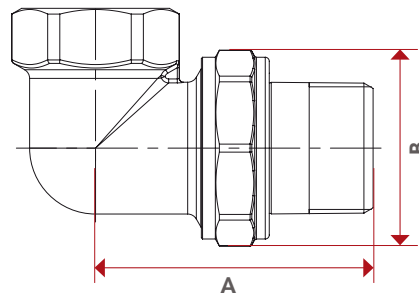
Threads: ISO228 (equivalent to DIN EN ISO 228 and BS EN ISO 228).

MATERIALS



POS.	DESCRIPTION	N.	MATERIAL
1	Elbow adaptor	1	Nickel-plated brass CW617N
2	O-Ring	1	NBR
3	Fitting	1	Nickel-plated brass CW617N
4	Nut	1	Nickel-plated brass CW617N

OVERALL DIMENSIONS



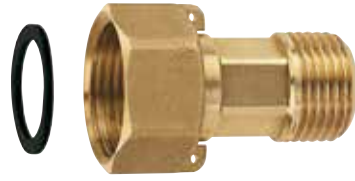
	1/2"	3/4"	1"	1 1/4"
DN	15	20	25	32
A	51	58,5	69,5	80
B	33	40,5	49	55
Kg/cm ² bar	50	40	40	30
LBS - psi	725	580	580	435

CERTIFICATIONS



154

CONNECTOR FOR WATER METERS



SIZE	PRESSURE	CODE	PACKING
3/4"x1/2"	20bar/290psi	1540034	2/400
1"x3/4"	20bar/290psi	1540100	2/200
1"1/4x1"	20bar/290psi	1540114	2/100
1"1/2x1"1/4	20bar/290psi	1540112	2/80
2"x1"1/2	20bar/290psi	1540200	2/40
2"1/2x2"	20bar/290psi	1540212	1/28

TECHNICAL SPECIFICATIONS

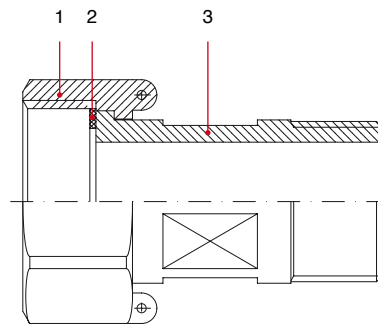
Nut and tail in brass.

Minimum and maximum working temperatures: -20°C, 120°C.

Threads: ISO228 (equivalent to DIN EN ISO 228 and BS EN ISO 228).

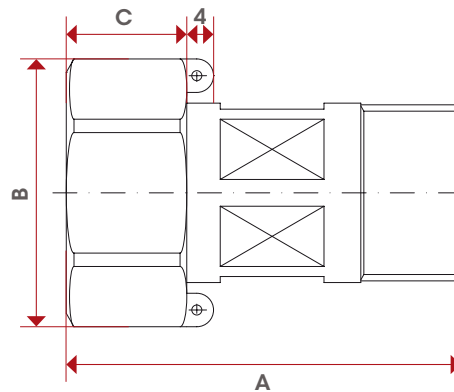
Available sizes: F3/4"xM1/2", F1"XM3/4", F1"1/4XM1", F1"1/2XM1"1/4, F2"XM1"1/2, F2"1/2XM2".

MATERIALS



POS.	DESCRIPTION	N.	MATERIAL
1	Nut	1	Brass CW617N
2	Washer	1	EPDM
3	Tail	1	Brass CW617N

OVERALL DIMENSIONS



	1/2"	3/4"	1"	1"1/4	1"1/2	2"
DN	15	20	25	32	40	50
A	45,5	57	60,5	71	80,5	94
B	32	40,5	51,6	59,5	70	89
C	15	17	22	23	25	30
Kg/cm ² bar	20	20	20	20	20	20
LBS - psi	290	290	290	290	290	290

CERTIFICATIONS



3/4" - 1"

110

5-WAY CONNECTOR
FOR PUMPS
AND TANKS

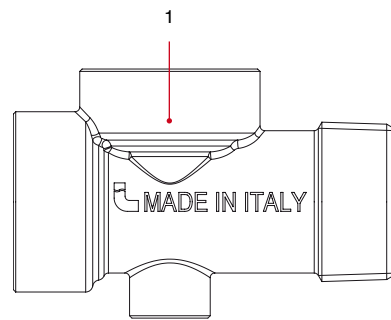


SIZE	PRESSURE	CODE	PACKING
1"	25bar/362,5psi	1100100	1/125

TECHNICAL SPECIFICATIONS

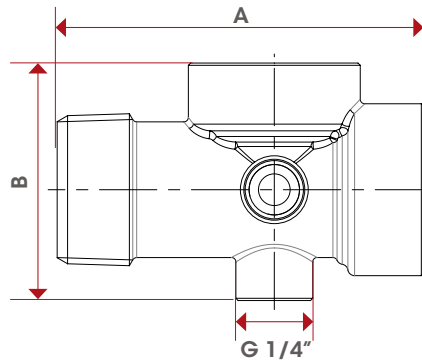
Body in brass.
Nominal pressure: 25bar.
Female threads: ISO228
(equivalent to DIN EN ISO 228 and BS EN ISO 228).
Male threads: ISO 7/1
(equivalent to DIN EN 10226-1 and BS EN 10226-1).

MATERIALS



POS.	DESCRIPTION	N.	MATERIAL
1	Body	1	Brass CW617N

OVERALL DIMENSIONS



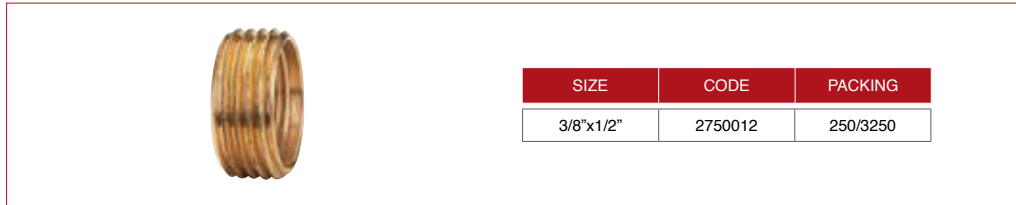
	1"
A	81
B	52,5
Kg/cm ² bar	25
LBS - psi	362,5

CERTIFICATIONS



275

REDUCTION 3/8"x1/2"



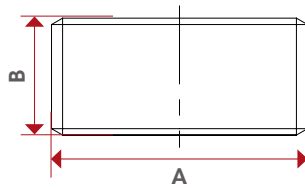
TECHNICAL SPECIFICATIONS

Threads: ISO228 (equivalent to DIN EN ISO 228 and BS EN ISO 228).

MATERIALS

POS.	DESCRIPTION	N.	MATERIAL
1	Reduction	1	Brass CW614W

OVERALL DIMENSIONS



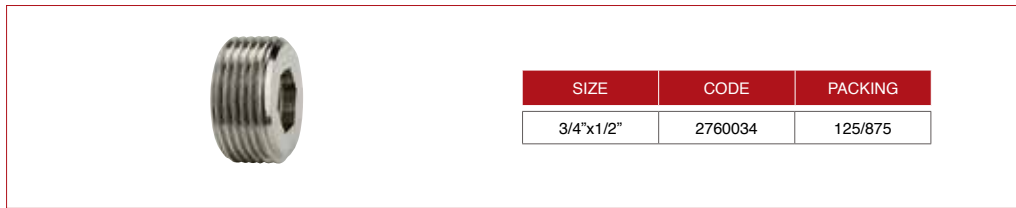
	1/2"
A	20,8
B	9,5

CERTIFICATIONS



276

REDUCTION 3/4"x1/2",
INNER HEXAGON



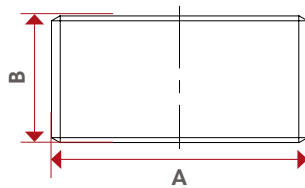
TECHNICAL SPECIFICATIONS

Threads: ISO228 (equivalent to DIN EN ISO 228 and BS EN ISO 228).

MATERIALS

POS.	DESCRIPTION	N.	MATERIAL
1	Reduction	1	Nickel-plated brass CW614W

OVERALL DIMENSIONS



	1/2"
A	26,3
B	13

CERTIFICATIONS



142

P.T.F.E. TAPER



TECHNICAL SPECIFICATIONS

Available size: mm.12xmm.0,076. Length: m.12.

ROL075

THREAD SEALING FOR
METAL THREAD JOINTS



CODE	PACKING
ROL075	7/91

ml. 75

TUB100

THREAD SEALING FOR
METAL THREAD JOINTS



CODE	PACKING
TUB100	7/91

ml. 100





NOTES

A series of horizontal dashed lines for taking notes, starting from the top right of the 'NOTES' header and extending across the page.



ITAP S.p.A.
Via Ruca 19
25065 Lumezzane
Brescia (ITALIA)
Tel 030 89270
Fax 030 8921990
www.itap.it
info@itap.it