

TECHNICAL CATALOGUE

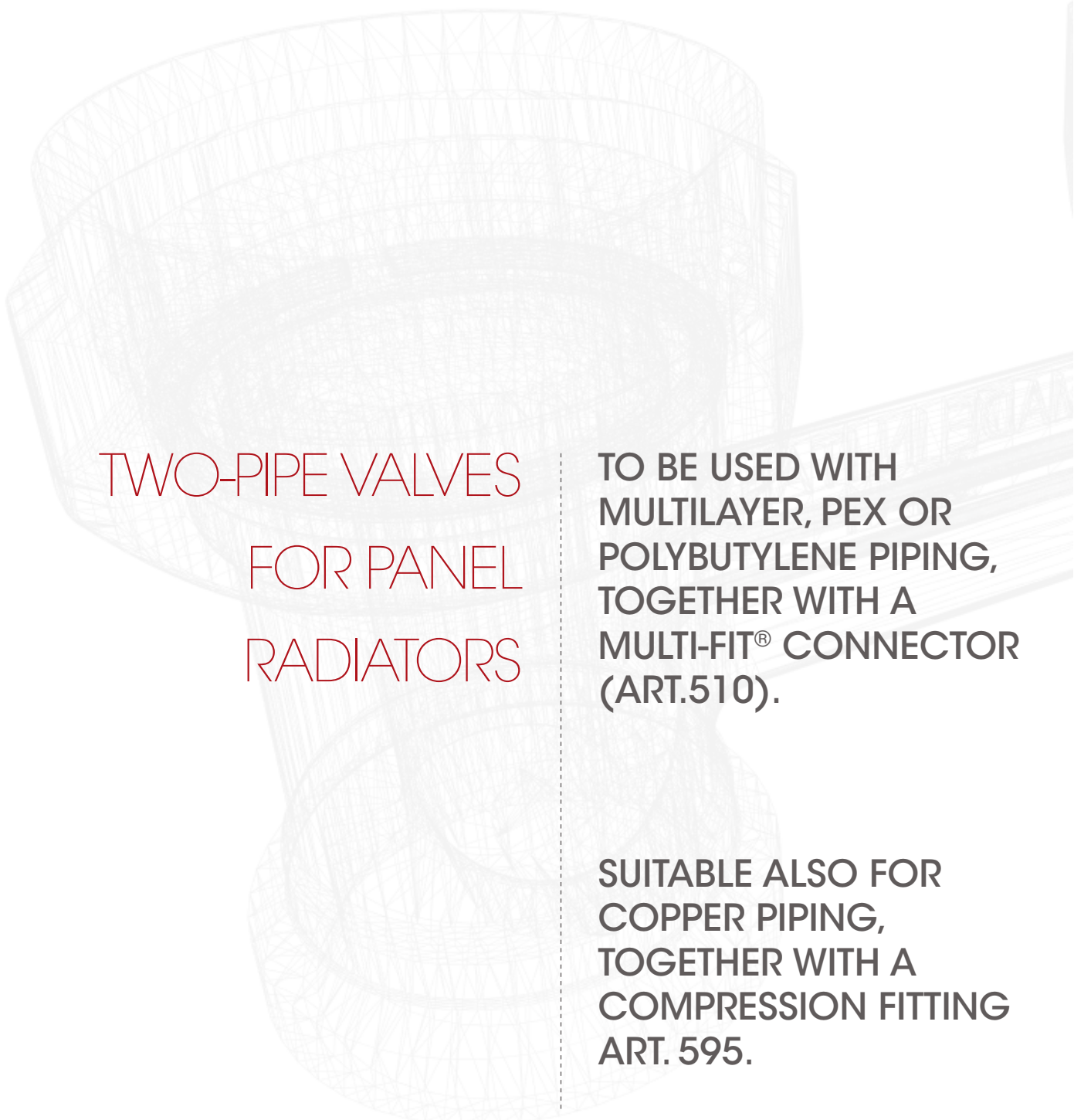
TWO-PIPE VALVES FOR PANEL RADIATORS



ITAP SpA, founded in Lumezzane (Brescia) in 1972, is currently one of the leading production companies in Italy of valves, fittings and distribution manifolds for plumbing and heating systems. Thanks to fully automated production processes, with 72 tooling machines and 51 assembly lines, we are able to produce 200,000 pieces per day. Our innate pursuit for innovation and observance of technical regulations is supported by the company certification ISO 9001: 2008. The company has always considered its focus on quality as the main tool to obtain significant business results: today ITAP SpA is proud to offer products bearing the approval of numerous international certifying bodies.

TWO-PIPE VALVES FOR PANEL RADIATORS





TWO-PIPE VALVES
FOR PANEL
RADIATORS

TO BE USED WITH
MULTILAYER, PEX OR
POLYBUTYLENE PIPING,
TOGETHER WITH A
MULTI-FIT® CONNECTOR
(ART.510).

SUITABLE ALSO FOR
COPPER PIPING,
TOGETHER WITH A
COMPRESSION FITTING
ART. 595.

305

STRAIGHT TWO-PIPE VALVE



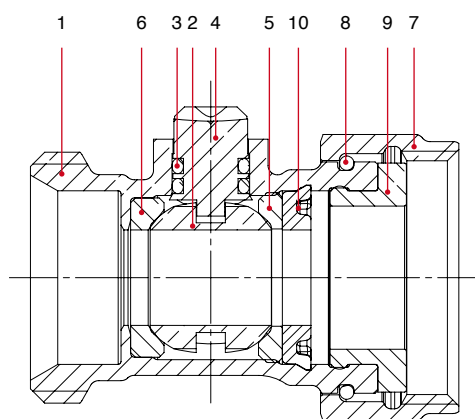
SIZE	PRESSURE	CODE	PACKING
3/4" (DN 20) EUROKONUS	10bar/145psi	3050034	6/96

TECHNICAL SPECIFICATIONS

Body in nickel-plated brass.
 Floor connections.
 Radiator connections: 3/4" flat seat.
 Pipe connection: 3/4" Eurokonus.
 Centres distance: 50mm.
 Maximum working temperature: 110°C.
 Threads ISO228 (equivalent to DIN EN ISO 228 and BS EN ISO 228).

Flow rate (Kv): 4,34 m³/h

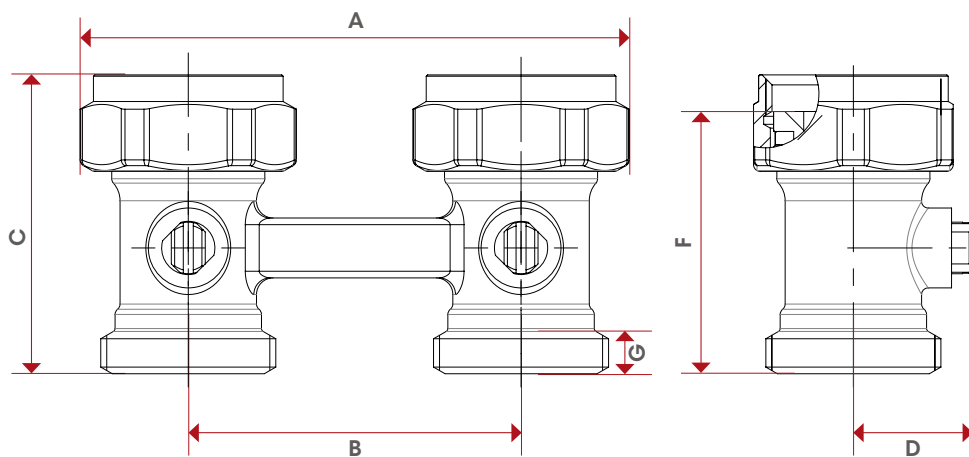
MATERIALS



POS.	DESCRIPTION	N.	MATERIAL
1	Body	1	Nickel-plated brass CW617N
2	Ball	2	Chrome-plated brass CW614N
3	O-Ring	4	EPDM
4	Stem	2	Brass CW614N
5	Seat	2	EPDM
6	Seat	2	EPDM
7	Nut	2	Nickel-plated brass CW617N
8	Stop ring	2	Stainless steel AISI 304
9	Washer	2	EPDM
10	Elastic ring	2	POM



OVERALL
DIMENSIONS



	3/4"
DN	20
A	82,5
B	50
C	44,9
D	17,9
F	39,4
G	6,5
Kg/cm ² bar	10
LBS - psi	145

CERTIFICATIONS



315

ANGLE TWO-PIPE VALVE

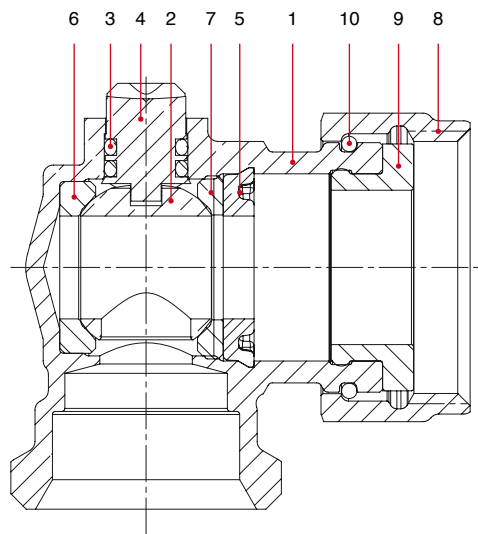


SIZE	PRESSURE	CODE	PACKING
3/4" (DN 20) EUROKONUS	10bar/145psi	3150034	6/96

TECHNICAL SPECIFICATIONS

Body in nickel-plated brass.
 Wall connections.
 Radiator connections: 3/4" flat seat.
 Pipe connection: 3/4" Eurokonus.
 Centres distance: 50mm.
 Maximum working temperature: 110°C.
 Threads ISO228 (equivalent to DIN EN ISO 228 and BS EN ISO 228).
Flow rate (Kv): 2,05 m³/h

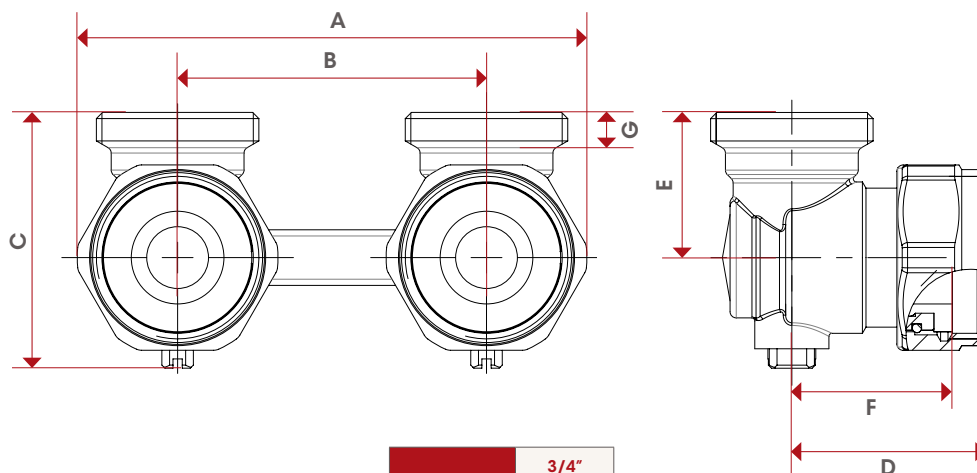
MATERIALS



POS.	DESCRIPTION	N.	MATERIAL
1	Body	1	Nickel-plated brass CW617N
2	Ball	2	Chrome-plated brass CW614N
3	O-Ring	4	EPDM
4	Stem	2	Brass CW614N
5	Elastic ring	2	POM
6	Seat	2	EPDM
7	Seat	2	EPDM
8	Nut	2	Nickel-plated brass CW617N
9	Washer	2	EPDM
10	Stop ring	2	Stainless steel AISI 304



OVERALL
DIMENSIONS



	3/4"
DN	20
A	82,5
B	50
C	41,4
D	31,5
E	23,5
F	26
G	6
Kg/cm ² bar	10
LBS - psi	145

CERTIFICATIONS



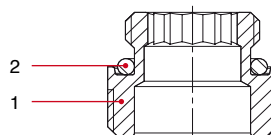
306

FITTING FOR
PANEL RADIATORS,
WITH THREAD 1/2" F



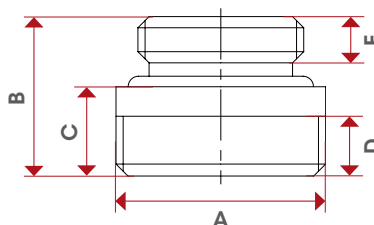
SIZE	CODE	PACKING
1/2" - 3/4"	3060012034	48/528

MATERIALS



POS.	DESCRIPTION	N.	MATERIAL
1	Fitting	1	Brass CW614N
2	O-Ring	1	EPDM

OVERALL DIMENSIONS



	1/2"x3/4"
A	26,3
B	20
C	11,2
D	7,5
E	5,8

CERTIFICATIONS



306K

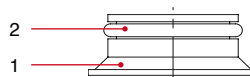
ADAPTER FOR
PANEL RADIATORS,
WITH THREAD 3/4" M



SIZE	CODE	PACKING
0	306K	2/600

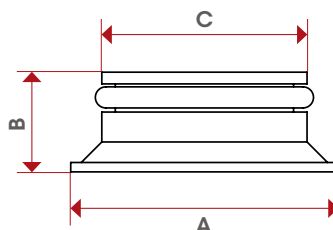
The packing consists in 300 bags, including each one 2 adapters.

MATERIALS



POS.	DESCRIPTION	N.	MATERIAL
1	Sleeve	1	Nylon
2	O-Ring	1	EPDM

OVERALL DIMENSIONS



	3/4"
DN	20
A	23
B	8,5
C	17,5



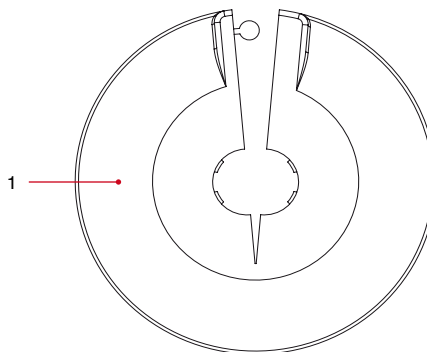
286

PLASTIC ROSETTE



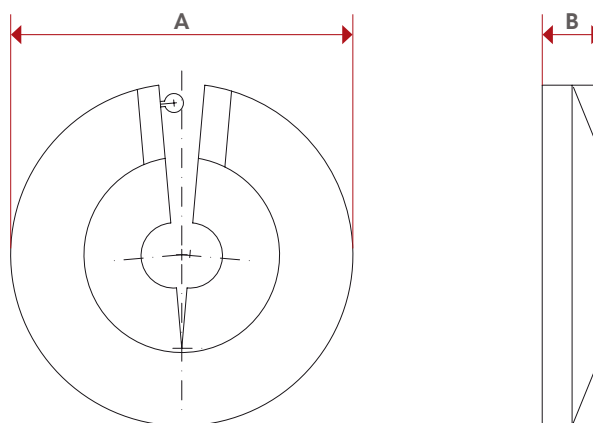
SIZE	CODE	PACKING
12	2860012	100/1000
14	2860014	100/1000
15	2860015	100/1000
16	2860016	100/1000
18	2860018	100/1000

MATERIALS



POS.	DESCRIPTION	N.	MATERIAL
1	Cover-plate	1	Polypropylene

OVERALL DIMENSIONS



	12	14	15	16	18
A	63	63	63	63	63
B	11	11	11	11	11

NOTES

We reserve the right to make improvements and changes to the products described herein and to the relative technical data, at any time and without forewarning.



ITAP S.p.A.
Via Ruca 19
25065 Lumezzane
Brescia (ITALIA)
Tel 030 89270
Fax 030 8921990
www.itap.it - info@itap.it