



 Dal 1970 la ventilazione made in Italy



Series **AXM**

Mixed flow in-line duct Fans

Series AXM

Mixed flow In-line duct fans

AXM is a series of compact in-line duct fans entirely made of robust and highly-resistant polypropylene. They are particularly indicated for installations where space is limited, such as false ceilings. Highly versatile, they can offer the most effective solution for a wide range of residential or commercial ventilation applications.

AXM fans are available in 5 models with sizes Ø100, 125, 150, 160 and 200 mm. They are 2 speed running as standard and available with timer (adjustable from 3 to 15 minutes).

BENEFITS

- High efficiency resulting in minimum energy costs.
- Quiet running thanks to optimized aerodynamics and guide vanes.
- Easy installation: pre-installed mounting brackets and external connection box.
- Simplified maintenance by loosening the clamps (no need to handle the duct).
- Versatile installation.

Features

- Duct fans, made entirely of polypropylene.
- For direct installation between ducts.
- Easy inspection and maintenance by simply opening the clamp and removing the fan.
- Helicocentrifugal mixed flow impeller with downstream stator. Made in ABS.

Motor

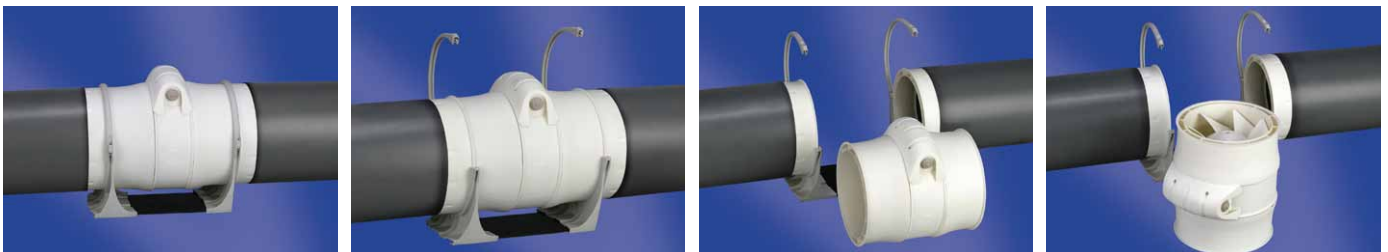
- Asynchronous motor, 2 and 3 speeds, depending on model.
- IP 44 Protection, Motor Class B.
- Robust motor with ball bearings, maintenance-free.
- 220 - 240 at 50 Hz.
- Speed control using phase control or transformer (exception: Version with timer).
- Thermal overload protection as a standard feature.

Electrical connection

- Externally fitted terminal box with cable entry grommet.

Accessories

- Speed controllers
- Back-draught shutter
- Protection grille



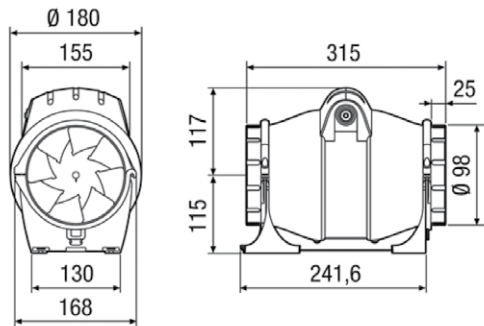
AXM 100



VERSION

 **TIMER**, adjustable from 3 to 15 minutes.

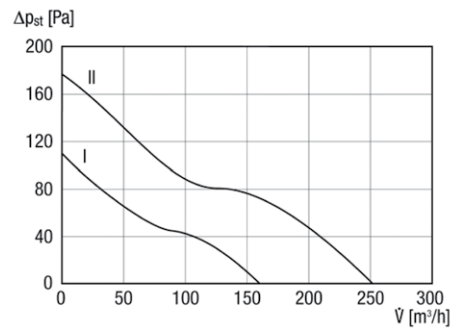
DIMENSIONS (mm)



TECHNICAL DATA

Air flow volume	160 m ³ /h/250 m ³ /h
Rotating speed	1,700 1/min/2,300 1/min
Speed controllable	✓
Rated voltage	220 - 240 V
Frequency	50 Hz
Nominal output max	35 W
I _{max}	0.1 A/0.18 A
Degree of protection (IP)	44
Insulation class	B
Installation site	Duct
Installation position	vertical, horizontal
Housing material	Polypropylene
Weight	2,1 kg
Nominal size	100 mm
Airstream temperature max	40 °C
Range	C
Tot LwA	55 dB(A)
Tot LpA at 3 m	39 dB(A)

CURVES



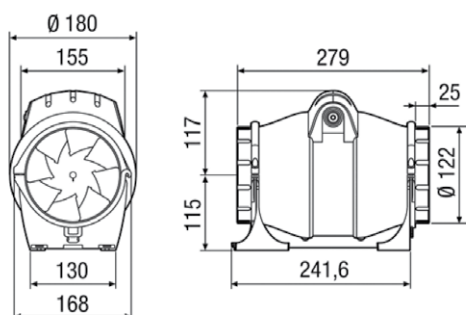
AXM 125



VERSION

 **TIMER**, adjustable from 3 to 15 minutes.

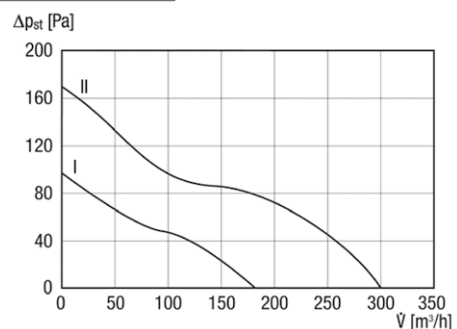
DIMENSIONS (mm)



TECHNICAL DATA

Air flow volume	180 m ³ /h/300 m ³ /h
Rotating speed	1,700 1/min/2,300 1/min
Speed controllable	✓
Rated voltage	220 - 240 V
Frequency	50 Hz
Nominal output max	36 W
I _{max}	0.1 A/0.18 A
Degree of protection (IP)	44
Insulation class	B
Installation site	Duct
Installation position	vertical, horizontal
Housing material	Polypropylene
Weight	2,1 kg
Nominal size	125 mm
Airstream temperature max	40 °C
Range	C
Tot LwA	54 dB(A)
Tot LpA at 3 m	44 dB(A)

CURVES



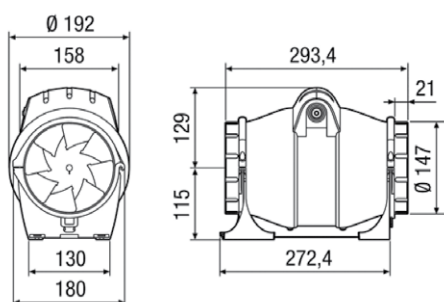
AXM 150



VERSION

 **TIMER**, adjustable from 3 to 15 minutes.

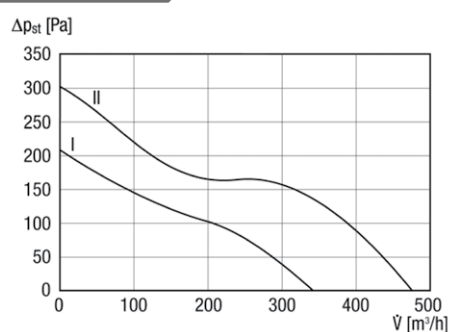
DIMENSIONS (mm)



TECHNICAL DATA

Air flow volume	340 m ³ /h/480 m ³ /h
Rotating speed	2,000 1/min/2,700 1/min
Speed controllable	✓
Rated voltage	220 - 240 V
Frequency	50 Hz
Nominal output max	70 W
I _{max}	0.27 A/0.36 A
Degree of protection (IP)	44
Insulation class	B
Installation site	Duct
Installation position	vertical, horizontal
Housing material	Polypropylene
Weight	3,2 kg
Nominal size	150 mm
Airstream temperature max	40 °C
Range	C
Tot LwA	66 dB(A)
Tot LpA at 3 m	50 dB(A)

CURVES



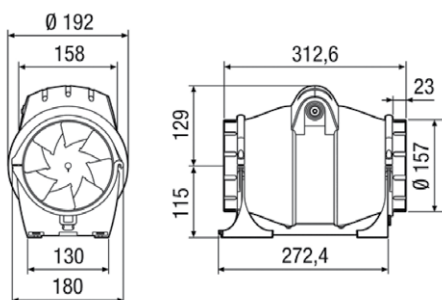
AXM 160



VERSION

 **TIMER**, adjustable from 3 to 15 minutes.

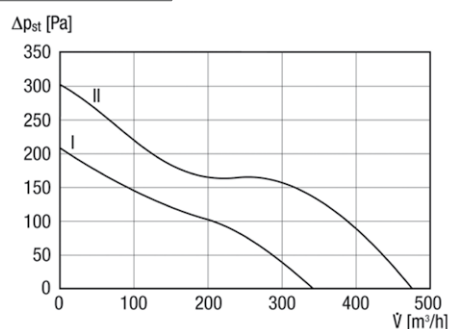
DIMENSIONS (mm)



TECHNICAL DATA

Air flow volume	340 m ³ /h/480 m ³ /h
Rotating speed	2,000 1/min/2,700 1/min
Speed controllable	✓
Rated voltage	220 - 240 V
Frequency	50 Hz
Nominal output max	70 W
I _{max}	0.27 A/0.36 A
Degree of protection (IP)	44
Insulation class	B
Installation site	Duct
Installation position	vertical, horizontal
Housing material	Polypropylene
Weight	3,2 kg
Nominal size	160 mm
Airstream temperature max	40 °C
Range	C
Tot LwA	65 dB(A)
Tot LpA at 3 m	50 dB(A)

CURVES



AXM 200



3 speeds as standard.
2 speeds Timer version.

VERSION

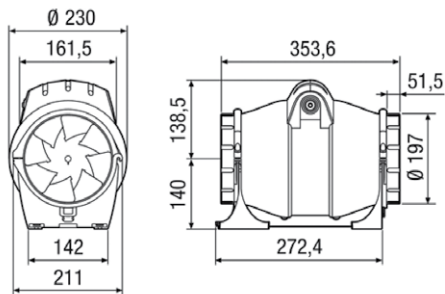


TIMER, adjustable from 3 to 15 minutes.

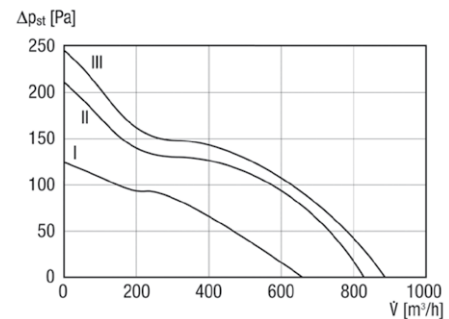
TECHNICAL DATA

Air flow volume	720 m ³ /h/820 m ³ /h/910 m ³ /h
Rotating speed	1,800 1/min/2,000 1/min/2,700 1/min
Speed controllable	✓
Rated voltage	220 - 240 V
Frequency	50 Hz
Nominal output max	75 W
I _{max}	0.24 A/0.27 A/0.34 A
Degree of protection (IP)	44
Insulation class	B
Installation site	Duct
Installation position	vertical, horizontal
Housing material	Polypropylene
Weight	4,5 kg
Nominal size	200 mm
Airstream temperature max	40 °C
Range	C
Tot LwA	58 dB(A)
Tot LpA at 3 m	43 dB(A)

DIMENSIONS (mm)



CURVES



SPEED CONTROLLERS

ACCESSORIES



R10

Cod. 2RV4110

- Infinitely variable electronic speed controller by potentiometer
- New design with cover
- **Suitable for surface and built-in application**
- Ease of connection by the means of removable terminals
- External trimmer for the adjustment of the fan minimum speed
- Protection fuse
- Preset holes for surface and recessed cable entry
- Single-phase 230V – 50 Hz
- **Max. load 1A**
- Protection IP42
- Weight 0,5 Kg
- Dimensions 110x80x42



RS

Cod. 2RV4151

- **4 steps speed controller** fitted with transformer
- New design with cover
- **Suitable for surface or built-in installation**
- Ease of connection by the means of removable terminals
- Running led On/Off
- Supply voltage 230V – 50/60 Hz
- Provided with protection fuse
- **Max. load 0,37 A**
- Protection IPX2
- Weight 0,54 Kg
- Dimensions 138 x 80 x 56



RVS

Cod. 2RV4042

- **5 steps speed controller** (fitted with transformer)
- ON/OFF switch
- IP42 protection
- **Max. load: 100 W (0,5 A)**
- Supply voltage: 230V-50/60 Hz
- Sizes: 118 x 118 x 58 mm
- Weight: 0,7 kg

BACK DRAUGHT SHUTTER

ACCESSORIES

Back draught shutters made in galvanized steel sheet with gasket on the closing side for greater sealing and less noise transmission.

CODE	DESCRIPTION
2SA1000	Shutter for AXM 100
2SA1250	Shutter for AXM 125
2SA1500	Shutter for AXM 150
2SA1600	Shutter for AXM 150
2SA2000	Shutter for AXM 200

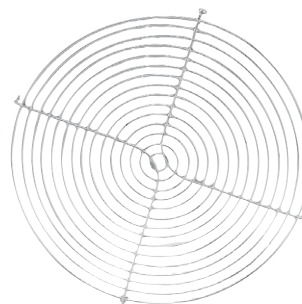


PROTECTION GRILLE

ACCESSORIES

Protection guard made in steel rod protected against the corrosion. Screws for the fixing included. To be used in case a side of the fan is not ducted or protected in any other way.

CODE	DESCRIPTION
2SR1000	Protection guard for AXM 100
2SR1250	Protection guard for AXM 125
2SR1500	Protection guard for AXM 150
2SR1600	Protection guard for AXM 150
2SR2000	Protection guard for AXM 200



Maico Italia S.p.A.

Via Maestri del Lavoro, 12 - 25017 Lonato del Garda (Brescia) Italia
Tel. +39 030 9913575 - Fax +39 030 9913766
sales@maico-italia.it - www.elicent.it



Member of:



We reserve the right to modify any technical data without notice.
Different voltage and frequency upon request.

All trademarks are the property of Maico Italia Spa - All rights reserved.

6DE1056