



Call for a showing today:

Christina Ward

Outside Community Manager
(503) 597-8822
SwedetownVillage@cwres.com

Chris Guernsey

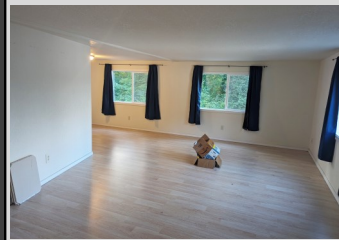
Oregon Sales Manager
(503) 510-7373
Chris.Guernsey@cwres.com



HOME ADDRESS:
25226 Alderbark Street
Space #31
Rainier, OR 97048

\$50,000

Deer View Cooperative is a 55 or older community tucked away off Hwy 30 and surrounded by nature that offers RV storage for its residents. The area has lots of areas for hiking and there is a country store nearby



BRIGHT & OPEN W-NATURAL LIGHT!

- 2 Bedrooms
- 2 Bathroom
- Washer/Dryer
- Dishwasher
- Storage Shed
- \$530 Monthly Site Rent

This 1976, 1344 sq.ft. home with 2 bedrooms and 2 bathrooms has a spacious open concept living area with lots of windows to bring in tons of natural light. The light floors help to make the room bright and spacious.

The kitchen comes with all appliances including a dishwasher. Master bedroom is spacious and has an attached bathroom. The guest bathroom has a walk-in shower. The home also comes with a washer/dryer.

Outside you have a small porch with cover at the front door and a storage shed that is in need of repair.





LENDERS FOR FINANCING

21ST MORTGAGE

Joy Williams
800-955-0021 ext. 1200
joywilliams@21stmortgage.com
620 Market Street
One Center Square
Knoxville, TN 37902

CROSS COUNTRY MORTGAGE

Lisa McCormick
503-931-2185 phone
Lisa.McCormick@ccm.com

ROGUE CREDIT UNION

Richard Burroughs
541-622-7841
rburroughs@roquecu.org

FINANCIAL SERVICES UNLIMITED

Bruce Zechenelly
503-626-8590
fsu@fsuloan.com
11950 SW 2nd Street, Suite 300
Beaverton, OR 97005

COUNTRY PLACE MORTGAGE

Lisa Reynolds
360-709-9191
lreynolds@countryplacemortgage.com

Troy Morrow
tmorrow@countryplacemortgage.com

NORTHWEST HOUSING SERVICES, LLC

Rick Budahl
877-467-9144 phone
208-461-8230 fax
rbudahl@cableone.net
website: www.nwmhloan.com
12360 Landau Way
Nampa, ID 83686

CREDIT HUMAN

J. Bretton
877-475-6852 x 2607 office
JBretton@CreditHuman.com
60 Lake Street, Ste 200
St. Albans, VT 05478

SOUND COMMUNITY BANK

Mark Weick
800-458-5585 ext. 421
mark.weick@soundcb.com
2941 S. 38th Street
Tacoma, WA 98409

MORTGAGECOUCH

Tim Leatherman
503-317-9828 cell
503-342-8525 office
888-849-2316 fax
timl@mortgagecouch.com