



HOMEOWNER SERVICES INC.

PUERTO VISTA

All Ages Community



Call for a showing today:

Mike Grant

Community Manager
(541) 888-6411 office
209-614-4824
PuertoVista@cwres.com

Chris Guernsey

Oregon Sales Manager
(503) 510-7373
Chris.Guernsey@cwres.com

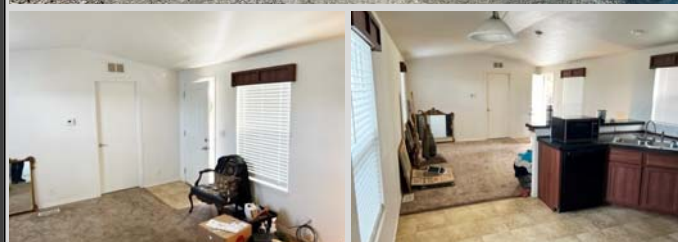


HOME ADDRESS:

1231 Embarcadero Circle
Space #94
Coos Bay, OR 97420

\$70,000

Puerto Vista is a well established and beautiful all ages community with RV storage and a playground. The community is located close to all amenities such as restaurants, shopping, schools and entertainment.



LARGE BACK YARD!

- 2 Bedrooms
- 1 Bathrooms
- Black Appliances
- Full-Size Garage
- Long Driveway
- \$510 Monthly Site Rent

Wonderful 2011 Palm Harbor home with 2 bedrooms, 1 bathroom and 756sq.ft. Home features high ceilings, decorative window valances and mini-blinds.

The kitchen has nice cabinets and counterspace, a small tall eat-in bar area with room for seating and a stove, refrigerator and dishwasher.

Outside you have a nice large backyard with grass, a full-size garage and long driveway to accommodate guests visiting.



cwres.com

*Information is reliable but not guaranteed.



LENDERS FOR FINANCING

21ST MORTGAGE

Joy Williams
800-955-0021 ext. 1200
joywilliams@21stmortgage.com
620 Market Street
One Center Square
Knoxville, TN 37902

FINANCIAL SERVICES UNLIMITED

Bruce Zechenelly
503-626-8590
fsu@fsuloan.com
11950 SW 2nd Street, Suite 300
Beaverton, OR 97005

NORTHWEST HOUSING SERVICES, LLC

Rick Budahl
877-467-9144 phone
208-461-8230 fax
rbudahl@cableone.net
website: www.nwmhloan.com
12360 Landau Way
Nampa, ID 83686

SOUND COMMUNITY BANK

Mark Weick
800-458-5585 ext. 421
mark.weick@soundcb.com
2941 S. 38th Street
Tacoma, WA 98409

CHERRY CREEK MORTGAGE

Lisa McCormick
503-931-2185 phone
503-210-6675 fax
lmccormick@ccmclending.com
website: www.cherrycreekmortgage.com
280 Liberty Street SE, Ste 100
Salem, OR 97302

COUNTRY PLACE MORTGAGE

Lisa Reynolds
360-709-9191
lreynolds@countryplacemortgage.com

Troy Morrow
tmorrow@countryplacemortgage.com

CREDIT HUMAN

J. Bretton
877-475-6852 x 2607 office
JBretton@CreditHuman.com
60 Lake Street, Ste 200
St. Albans, VT 05478

COLONIAL HOME LOANS

Tim Leatherman
503-722-3997 office
503-317-9828 cell
503-722-5368 fax
timl@colonialhomeloan.com
12901 SE 97th Avenue, #100
Clackamas, OR 97015