



Call for a showing today:

Ronda Aldridge
Community Manager
(503) 363-6234
Sundial@cwres.com

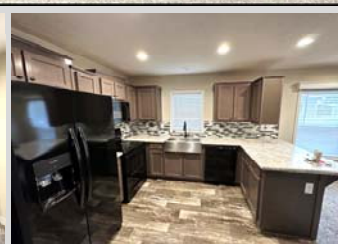
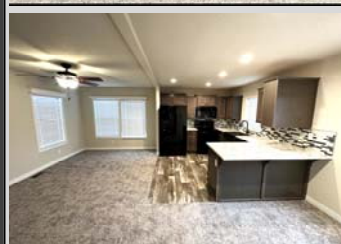
Chris Guernsey
Oregon Sales Manager
(503) 510-7373
Chris.Guernsey@cwres.com



HOME ADDRESS:
2200 Lancaster Drive SE
Space #3A
Salem, OR 97317

\$146,999

Sundial MHP is a beautiful 55+ community in the heart of the Willamette Valley. The community is pet-friendly and boasts a calendar of activities, a neighborhood atmosphere and an impressive lineup of social amenities such as a club house, indoor pool/spa, library & billiard room.



BEAUTIFUL BRAND NEW HOME!

- 2 Bedrooms
- 2 Bathrooms
- Breakfast Bar Area
- Storage Shed
- Low Maintenance Landscaping
- \$1,050 Monthly Site Rent

Beautiful brand new, 2023 Karsten home with 2 beds, 2 baths and 880sq.ft. with a nice open floor plan. Living room has lots of windows and a ceiling fan. Kitchen has beautiful black appliances, including a dishwasher and built-in microwave, a breakfast bar area with room for seating and a large deep sink.

Master bedroom is roomy with a nice bathroom and walk-in shower. The guest bath has a tub/shower combo. Outside you have a shed and low maintenance landscaping.





LENDERS FOR FINANCING

21ST MORTGAGE

Joy Williams
800-955-0021 ext. 1200
joywilliams@21stmortgage.com
620 Market Street
One Center Square
Knoxville, TN 37902

CROSS COUNTRY MORTGAGE

Lisa McCormick
503-931-2185 phone
Lisa.McCormick@ccm.com

ROGUE CREDIT UNION

Richard Burroughs
541-622-7841
rburroughs@roquecu.org

FINANCIAL SERVICES UNLIMITED

Bruce Zechenelly
503-626-8590
fsu@fsuloan.com
11950 SW 2nd Street, Suite 300
Beaverton, OR 97005

COUNTRY PLACE MORTGAGE

Lisa Reynolds
360-709-9191
lreynolds@countryplacemortgage.com

Troy Morrow
tmorrow@countryplacemortgage.com

NORTHWEST HOUSING SERVICES, LLC

Rick Budahl
877-467-9144 phone
208-461-8230 fax
rbudahl@cableone.net
website: www.nwmhloan.com
12360 Landau Way
Nampa, ID 83686

CREDIT HUMAN

J. Bretton
877-475-6852 x 2607 office
JBretton@CreditHuman.com
60 Lake Street, Ste 200
St. Albans, VT 05478

SOUND COMMUNITY BANK

Mark Weick
800-458-5585 ext. 421
mark.weick@soundcb.com
2941 S. 38th Street
Tacoma, WA 98409

MORTGAGE COUCH

Tim Leatherman
503-342-8525 office
503-317-9828 cell
888-849-2316 fax
timl@mortgagecouch.com