



HOMEOWNER SERVICES INC.

LAKEWOOD VISTA

55 or Older Community



Call for a showing today:

Don & Sylvia Best

Community Manager

(541) 689-2431

LakewoodVista@cwres.com

Chris Guernsey

Oregon Sales Manager

(503) 510-7373

Chris.Guernsey@cwres.com

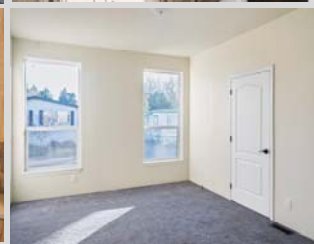


HOME ADDRESS:

1800 Lakewood Court

Sp. #182

Eugene, OR 97402



LAKE FRONT VIEW! BRAND NEW HOME!

- 2 Bedrooms / 2 Bathrooms
- Heat Pump w/Air Conditioning
- Quartz Countertops
- Large Covered Deck
- Carport
- \$1,095 Monthly Rent +\$34 cable

Lakefront View! Beautiful brand new Marlette home has 2 beds, 2 baths and 839sq.ft of inside living space. Home features a heat pump and a large 8ft covered porch overlooking the community lake! The living room area is bright and open and features French doors out to the covered deck. Kitchen has quartz countertops, stainless steel appliances including a built-in microwave, lots of storage and a small kitchen island. The master bedroom has 2 separate closets and a master bath with dual sinks and a walk-in shower.

Outside you have a carport and that wonderful covered deck to sit on overlooking the lake. Home also comes with a heat pump with air conditioning.

PRICE REDUCED!

\$179,999

Lakewood Vista is a beautiful 55+ community situated on a lake in the picturesque Pacific NW city of Eugene, OR. The community features a club house for events, indoor heated pool and a yoga & dance studio.



cwres.com

*Information is reliable but not guaranteed.



LENDERS FOR FINANCING

21ST MORTGAGE

Joy Williams
800-955-0021 ext. 1200
joywilliams@21stmortgage.com
620 Market Street
One Center Square
Knoxville, TN 37902

FINANCIAL SERVICES UNLIMITED

Bruce Zechenelly
503-626-8590
fsu@fsuloan.com
11950 SW 2nd Street, Suite 300
Beaverton, OR 97005

NORTHWEST HOUSING SERVICES, LLC

Rick Budahl
877-467-9144 phone
208-461-8230 fax
rbudahl@cableone.net
website: www.nwmhloan.com
12360 Landau Way
Nampa, ID 83686

SOUND COMMUNITY BANK

Mark Weick
800-458-5585 ext. 421
mark.weick@soundcb.com
2941 S. 38th Street
Tacoma, WA 98409

CROSS COUNTRY MORTGAGE

Lisa McCormick
503-931-2185 phone
Lisa.McCormick@ccm.com

ROGUE CREDIT UNION

Richard Burroughs
541-622-7841
rburroughs@roquecu.org

COUNTRY PLACE MORTGAGE

Lisa Reynolds
360-709-9191
lreynolds@countryplacemortgage.com

Troy Morrow
tmorrow@countryplacemortgage.com

CREDIT HUMAN

J. Bretton
877-475-6852 x 2607 office
JBretton@CreditHuman.com
60 Lake Street, Ste 200
St. Albans, VT 05478

MORTGAGE COUCH

Tim Leatherman
503-342-8525 office
503-317-9828 cell
888-849-2316 fax
timl@mortgagecouch.com