



HOMEOWNER SERVICES INC.

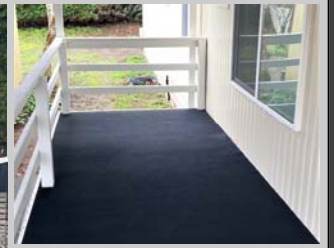
# Maple Lane

## 55 or Older Community



Call for a showing today:

**Frank Migliore**  
15130 S Maple Lane Road  
Oregon City, OR 97045  
(503) 657-6045  
MapleLane@cwres.com



**Chris Guernsey**  
Oregon Sales Manager  
(503) 510-7373  
Chris.Guernsey@cwres.com



### NICE UPDATED HOME!

- 2 Bedroom / 1 Bathroom
- Fresh Paint
- New Carpet
- Carport
- New Lighting
- \$805 Monthly Site Rent

**Home Address:**  
15130 S Maple Lane Road,  
Space #11  
Oregon City, OR 97045

# \$39,999

Maple Lane is a 55 or older community located close to shopping, restaurants, entertainment & Clackamas Community College.

Home is ready for someone to come in and call it their own!

This updated 1975, 2 bedroom, 1 bath home features new carpet throughout the home, new lighting and blinds throughout.

The deck has been repaired and the home has been freshly painted inside and out.

Outside you have fresh low maintenance landscaping and a carport.



[cwres.com](http://cwres.com)

\*Information is reliable but not guaranteed.



## **LENDERS FOR FINANCING**

### **21<sup>ST</sup> MORTGAGE**

Joy Williams  
800-955-0021 ext. 1200  
[joywilliams@21stmortgage.com](mailto:joywilliams@21stmortgage.com)  
620 Market Street  
One Center Square  
Knoxville, TN 37902

### **CHERRY CREEK MORTGAGE**

Lisa McCormick  
503-931-2185 phone  
503-210-6675 fax  
[lmccormick@ccmclending.com](mailto:lmccormick@ccmclending.com)  
website: [www.cherrycreekmortgage.com](http://www.cherrycreekmortgage.com)  
280 Liberty Street SE, Ste 100  
Salem, OR 97302

### **FINANCIAL SERVICES UNLIMITED**

Bruce Zechenelly  
503-626-8590  
[fsu@fsuloan.com](mailto:fsu@fsuloan.com)  
11950 SW 2<sup>nd</sup> Street, Suite 300  
Beaverton, OR 97005

### **COUNTRY PLACE MORTGAGE**

Lisa Reynolds  
360-709-9191  
[lreynolds@countryplacemortgage.com](mailto:lreynolds@countryplacemortgage.com)  
  
Troy Morrow  
[tmorrow@countryplacemortgage.com](mailto:tmorrow@countryplacemortgage.com)

### **NORTHWEST HOUSING SERVICES, LLC**

Rick Budahl  
877-467-9144 phone  
208-461-8230 fax  
[rbudahl@cableone.net](mailto:rbudahl@cableone.net)  
website: [www.nwmhloan.com](http://www.nwmhloan.com)  
12360 Landau Way  
Nampa, ID 83686

### **CREDIT HUMAN**

J. Bretton  
877-475-6852 x 2607 office  
[JBretton@CreditHuman.com](mailto:JBretton@CreditHuman.com)  
60 Lake Street, Ste 200  
St. Albans, VT 05478

### **SOUND COMMUNITY BANK**

Mark Weick  
800-458-5585 ext. 421  
[mark.weick@soundcb.com](mailto:mark.weick@soundcb.com)  
2941 S. 38<sup>th</sup> Street  
Tacoma, WA 98409

### **COLONIAL HOME LOANS**

Tim Leatherman  
503-722-3997 office  
503-317-9828 cell  
503-722-5368 fax  
[timl@colonialhomeloan.com](mailto:timl@colonialhomeloan.com)  
12901 SE 97<sup>th</sup> Avenue, #100  
Clackamas, OR 97015