



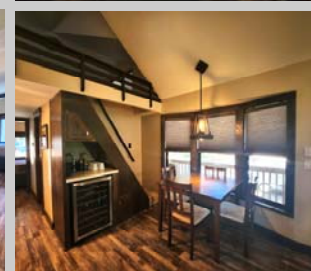
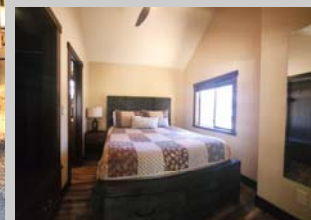
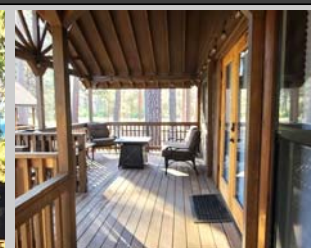
Call for a showing today:

Chris Adams
Resort Manager
541-595-6271

Chris@ColdSpringsResort.com

Chris Guernsey
Oregon Sales Manager
(503) 510-7373

Chris.Guernsey@cwres.com



Mountain Cabin on the Metolius!

- 1 Bedroom / 1 Bathroom
- Large Covered Deck
- Stainless Steel Appliances
- Investment Opportunity

Beautiful 396 sq.ft cabin with 1 bedroom, 1 bath + a loft area tucked beneath a canopy of Ponderosa & Tamaracks and only steps away from the spring-fed Metolious River. The cabin features stainless steel appliances, a wine refrigerator, microwave and farmhouse sink.

There is 1 bedroom with built-in storage and a large loft as an additional sleeping area for guests. The home has a large covered deck overlooking the Metolius River with vaulted ceilings and lots of windows. There is also a wood burning stove!

The cabin is located in the majestic and relaxing Cold Springs Resort overlooking a peaceful meadow on one side and river on the other. Great vacation home or home for year round living. This could also be an investment property.

CABIN ADDRESS:
25615 SW Cold Springs
Resort Lane, **Cabin #10**
Camp Sherman, OR 97730

\$250,000

Cold Springs Resort is within walking distance of the post office & local store, a fly fisherman's paradise. The store offers an array of fully stocked gear for fishing along with general store items.



*Information is reliable but not guaranteed.



LENDERS FOR FINANCING

21ST MORTGAGE

Joy Williams
800-955-0021 ext. 1200
joywilliams@21stmortgage.com
620 Market Street
One Center Square
Knoxville, TN 37902

CROSS COUNTRY MORTGAGE

Lisa McCormick
503-931-2185 phone
Lisa.McCormick@ccm.com

ROGUE CREDIT UNION

Richard Burroughs
541-622-7841
rburroughs@roquecu.org

FINANCIAL SERVICES UNLIMITED

Bruce Zechenelly
503-626-8590
fsu@fsuloan.com
11950 SW 2nd Street, Suite 300
Beaverton, OR 97005

COUNTRY PLACE MORTGAGE

Lisa Reynolds
360-709-9191
lreynolds@countryplacemortgage.com
Troy Morrow
tmorrow@countryplacemortgage.com

NORTHWEST HOUSING SERVICES, LLC

Rick Budahl
877-467-9144 phone
208-461-8230 fax
rbudahl@cableone.net
website: www.nwmhloan.com
12360 Landau Way
Nampa, ID 83686

CREDIT HUMAN

J. Bretton
877-475-6852 x 2607 office
JBretton@CreditHuman.com
60 Lake Street, Ste 200
St. Albans, VT 05478

SOUND COMMUNITY BANK

Mark Weick
800-458-5585 ext. 421
mark.weick@soundcb.com
2941 S. 38th Street
Tacoma, WA 98409

MORTGAGE COUCH

Tim Leatherman
503-342-8525 office
503-317-9828 cell
888-849-2316 fax
timl@mortgagecouch.com