



HOMEOWNER SERVICES INC.

# Clackamas River

## All Age Community



Call for a showing today:

**Mara Picco**

**Outside Sales Agent**

**(503) 970-4946**

***Mara.Picco@cwres.com***

**Chris Guernsey**

Oregon Sales Manager

(503) 510-7373

Chris.Guernsey@cwres.com



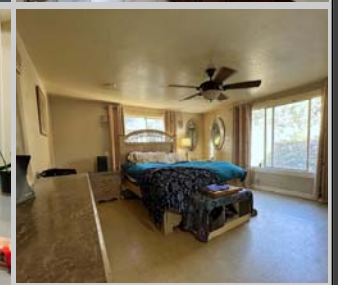
**HOME ADDRESS:**

**16440 SE 135th Street, Sp. #46  
Clackamas, OR 97015**

**PRICE REDUCED!**

**\$155,000**

Clackamas River Community Coop is a resident owned community located on the Clackamas River. The community has RV Storage and a private park with river access. There is easy access to I-205 & close to shopping, restaurants & hospital.



### SPACIOUS LIVING & FAMILY ROOM!

- 3 Bedrooms
- 2 Bathrooms
- Heat Pump w/Air Conditioning
- Large Deck
- Quartz Countertops
- \$625 Monthly Site Rent

Spacious 1987, Fleetwood, 3 bed, 2 bath home with 1620sq.ft. Home features a heat pump w/air conditioning, a remodeled kitchen with quartz countertops & beautiful new cabinets with glass fronts and lighting. Kitchen comes with all appliances including a dishwasher and built-in microwave. A skylight helps to bring in more light.

Home has a living room and family room which flows into the dining room with a sliding glass door out to the covered deck. The master bedroom is large with a ceiling fan and master bath which has also been remodeled with a tile shower!

Outside you have a large deck with a portion of it covered.



[cwres.com](http://cwres.com)

\*Information is reliable but not guaranteed.



## **LENDERS FOR FINANCING**

### **21<sup>ST</sup> MORTGAGE**

Joy Williams  
800-955-0021 ext. 1200  
[joywilliams@21stmortgage.com](mailto:joywilliams@21stmortgage.com)  
620 Market Street  
One Center Square  
Knoxville, TN 37902

### **FINANCIAL SERVICES UNLIMITED**

Bruce Zechenelly  
503-626-8590  
[fsu@fsuloan.com](mailto:fsu@fsuloan.com)  
11950 SW 2<sup>nd</sup> Street, Suite 300  
Beaverton, OR 97005

### **NORTHWEST HOUSING SERVICES, LLC**

Rick Budahl  
877-467-9144 phone  
208-461-8230 fax  
[rbudahl@cableone.net](mailto:rbudahl@cableone.net)  
website: [www.nwmhloan.com](http://www.nwmhloan.com)  
12360 Landau Way  
Nampa, ID 83686

### **SOUND COMMUNITY BANK**

Mark Weick  
800-458-5585 ext. 421  
[mark.weick@soundcb.com](mailto:mark.weick@soundcb.com)  
2941 S. 38<sup>th</sup> Street  
Tacoma, WA 98409

### **CHERRY CREEK MORTGAGE**

Lisa McCormick  
503-931-2185 phone  
503-210-6675 fax  
[lmccormick@ccmclending.com](mailto:lmccormick@ccmclending.com)  
website: [www.cherrycreekmortgage.com](http://www.cherrycreekmortgage.com)  
280 Liberty Street SE, Ste 100  
Salem, OR 97302

### **COUNTRY PLACE MORTGAGE**

Lisa Reynolds  
360-709-9191  
[lreynolds@countryplacemortgage.com](mailto:lreynolds@countryplacemortgage.com)  
  
Troy Morrow  
[tmorrow@countryplacemortgage.com](mailto:tmorrow@countryplacemortgage.com)

### **CREDIT HUMAN**

J. Bretton  
877-475-6852 x 2607 office  
[JBretton@CreditHuman.com](mailto:JBretton@CreditHuman.com)  
60 Lake Street, Ste 200  
St. Albans, VT 05478