

MOMENT 6S

User Manual

PACKING LIST



Waterproof Housing



Long Connector



Short Connector 1



Short Connector 2



360° Adapter



2.4GHz Remote
(not waterproof)



Tripod Mount Adapter



Bicycle Handlebar
Mount



Rubber Plug
Mount



USB-C Cable



2*Battery



Cleaning Cloth

PACKING LIST



2*Adhesive Pad



Protective Backdoor



Microphone



Helmet Belt



2*Helmet Mount



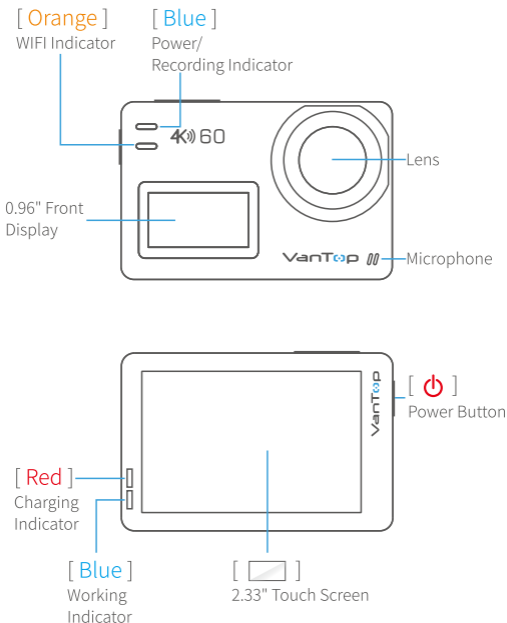
Surface J-Hook
Buckle

MOUNTING



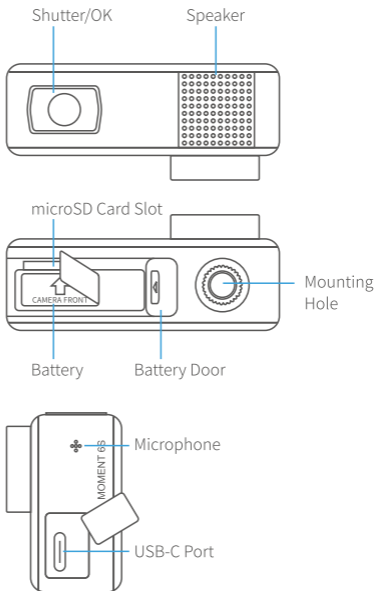
PRODUCT OVERVIEW

Camera



PRODUCT OVERVIEW

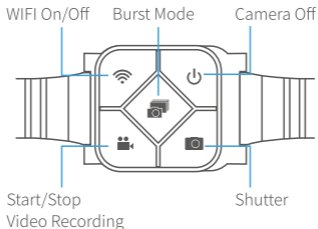
Camera



* U3 microSD card(sold separately) is a must for smooth and uninterrupted 4K video capturing.

PRODUCT OVERVIEW

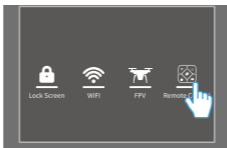
Remote



REMOTE PAIRING

Step 1:

Turn on the camera, the menu options will be displayed as shown in the picture below when you swipe down from the top of the screen. Then tap the **Remote Control** icon.



REMOTE PAIRING

Step 2:

Tap **YES** to start pairing.



Step 3:

Press and hold the **Video** and the **Photo** buttons simultaneously as shown in the picture below. You will see **Pairing Complete** on the camera after successful pairing.

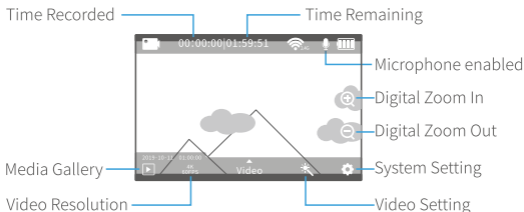


Note: The remote and the camera are not pre-paired, please pair them before your first use.

CAMERA MODES

Video Mode

After the camera is turned on, it will enter **Video Mode** by default.



Tap  on the screen to view all the video modes.



Record a video

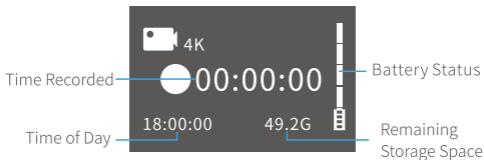


Record a series of time lapse videos at the set time intervals



Record video in -2X, -4X slow motion

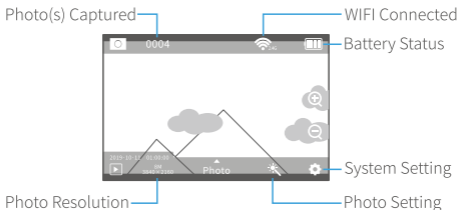
Front Display



CAMERA MODES

Photo Mode

Slide leftward/rightward on an empty section of the touch screen to enter **Photo Mode**.



Tap  on the screen to view all the photo modes.



Capture a single photo

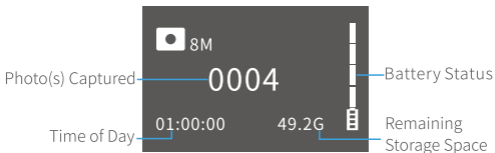


Capture a series of time lapse photos at the set time intervals



Capture photos in quick succession

Front Display



CAMERA MODES

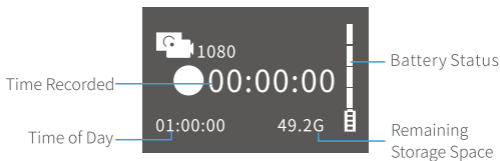
Video + Photo

Swipe up from the bottom of the screen, then tap **Video+Photo** to switch camera mode. In this mode, moment 6S will record video and capture photos (at the set photo intervals) simultaneously by pressing the shutter button.



* Tap  on the touch screen to set the photo intervals.

Front Display



CAMERA MODES

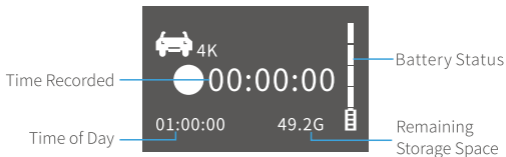
Car Mode

Swipe up from the bottom of the screen, then tap **Car Mode** to use the Moment 6S as a dash camera.



* Moment 6S will automatically start recording after a reboot.

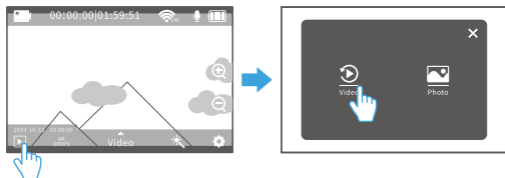
Front Display



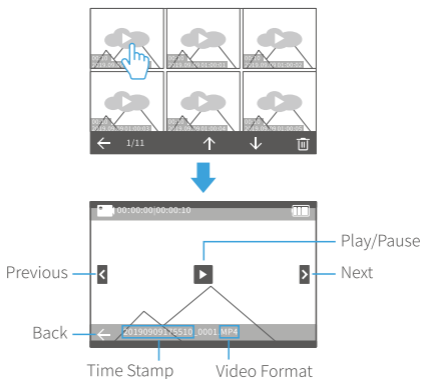
MEDIA GALLERY

Tap  on the touch screen to enter Media Gallery.

1. Check the videos/photos saved



① Video Files



MEDIA GALLERY

② Photo Files

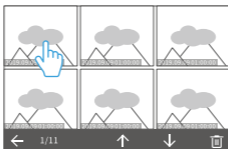
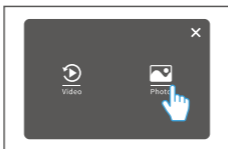
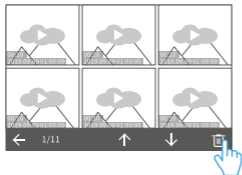



Photo Format

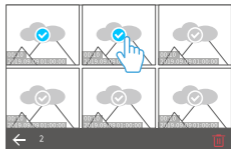
MEDIA GALLERY


2. Delete the videos/photos saved

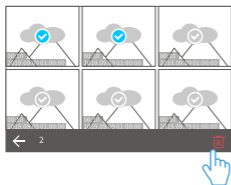
① Tap  once.



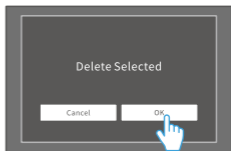
② Tap  on the thumbnail to select the files need to be deleted.



③ Tap  again to bring up the deletion option.




④ Tap to confirm the deletion.

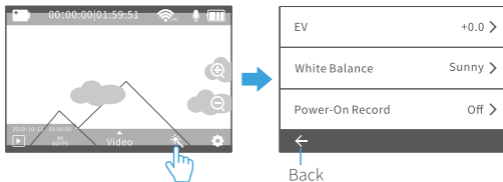


SETTINGS

Setting of Any Camera Mode

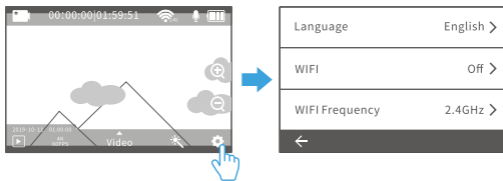
Tap  in any camera mode to start setting up the camera. Here below is an example for video setting.

Tap  on the touch screen to enter **Video Setting**.



System Setting

Tap  on the touch screen to enter **System Setting**.



APP

To operate the camera from your phone instead of the remote, please install app **MOMENT**.

Option 1:

Search and download **MOMENT** from APP Store or Google Play to install it into your mobile device directly.

Option 2:

Scan QR code below to download and install.



iOS 8.0 or later



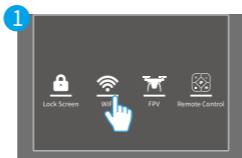
Android 4.4 or later

WIFI CONNECTION

Step 1: Turn on Camera's WIFI

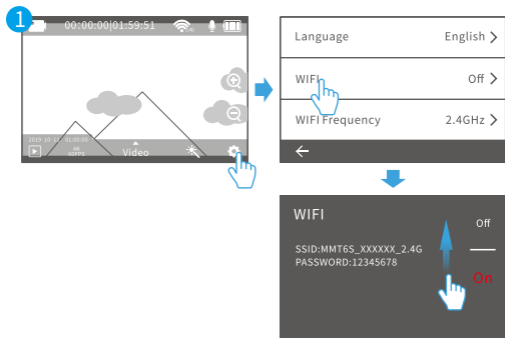
Option (1):

Turn on moment 6S, then swipe down from the top of the screen and tap WIFI.



Option (2):

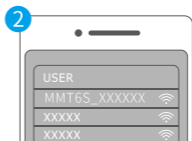
Tap  to enter System Settings, then tap WIFI > On.



WIFI CONNECTION

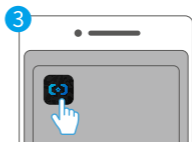
Step 2: Connect to Camera's WIFI

Find WIFI "MMT6S_" in your mobile device's WIFI settings, then input password 12345678 to get connected.

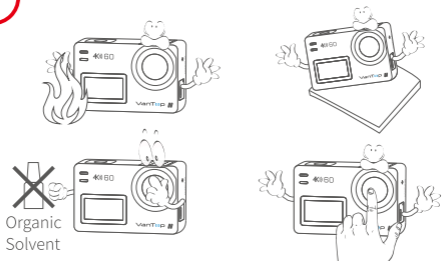
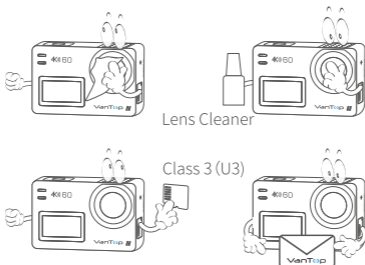


Step 3:

Launch the app in your mobile device or tablet.



MAINTENANCE



SPECIFICATION

Chipset	AMBA H22S85
Sensor	SONY IMX377
Front Screen	0.96" OLED
Touch Screen	2.33" IPS
Focal Length	2.8mm
Aperture	F2.8
FOV	170°
Weight	85g
Dimension	62.5mm x 41mm x 28.8mm
Battery Type/Capacity	3.8V/1200mAh
WIFI	2.4G/5G
Operating System	Windows 7/8X or above, OS X® 10.8 or above
Storage Supported	microSD card, up to 128GB

SPECIFICATION

Decode Format	H.264/H.265
Photo Format	JPG/RAW
Video Format	MP4
Slow Motion	-2X, -4X, -8X
Dzoom	8X
Gyro Stabilization	6-Axis Gyroscope
Photo Resolution	12MP (4000x3000 4:3) 10MP (3648x2736 4:3) 8MP (3840x2160 16:9) 8MP (3264x2448 4:3) 5MP (2592x1944 4:3) 3MP (2048x1536 4:3) 2MP (1920x1080 16:9)
Video Resolution	4K (3840x2160) 24/25/30/50/60fps 4K Ultra (3840x2160) 24/30fps 2.7K (2720x1520) 24/25/30/50/60fps 1440 (2560x1440) 24/25/30/50/60fps 1080 (1920x1080) 24/25/30/50/60/120fps 1080 Ultra (1920x1080) 30/60fps 720 (1280x720) 240fps



✉ NA:support@vantop.com

✉ FR:support.fr@vantop.com

✉ UK:support.uk@vantop.com

✉ ES:support.es@vantop.com