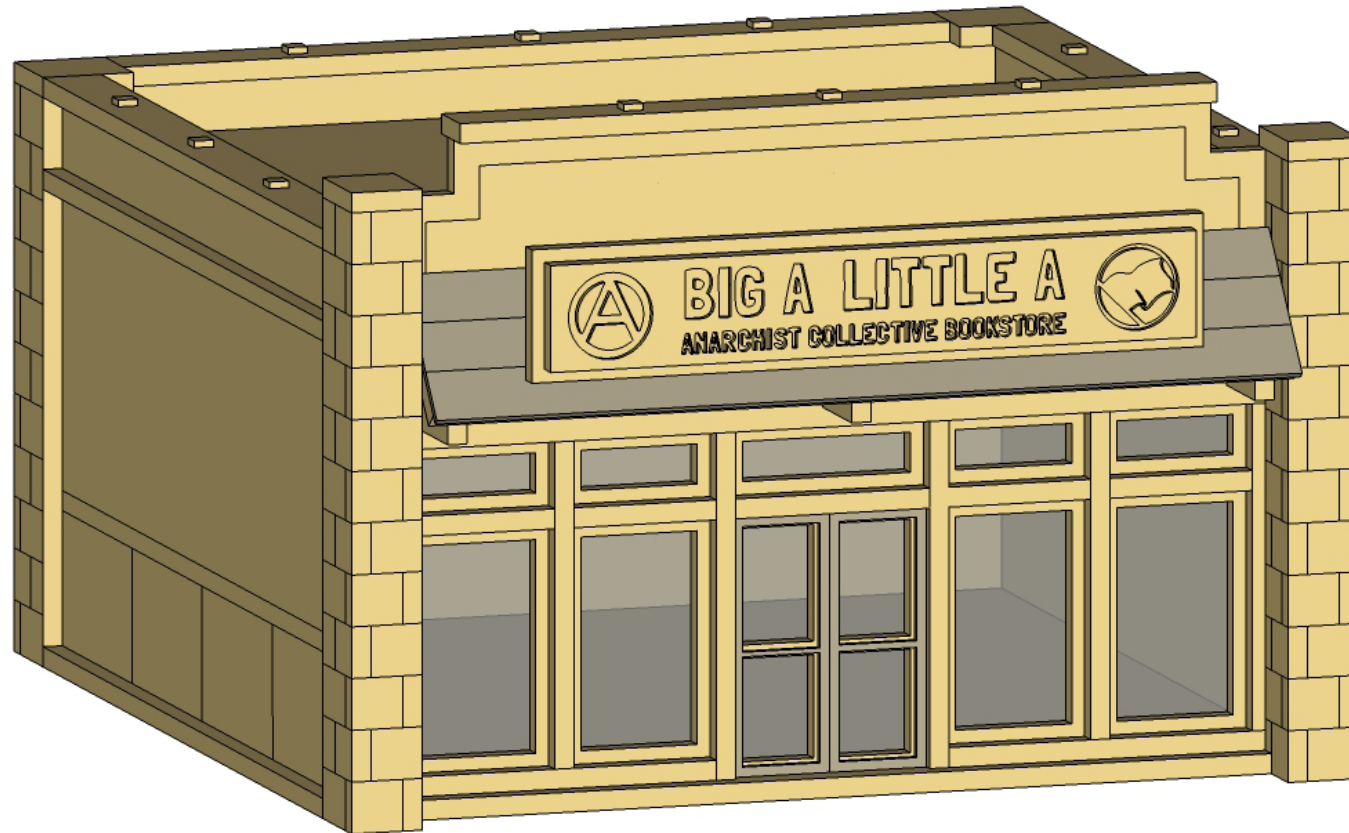


STRIP MALL

ASSEMBLY INSTRUCTIONS



SLOW DEATH GAMES

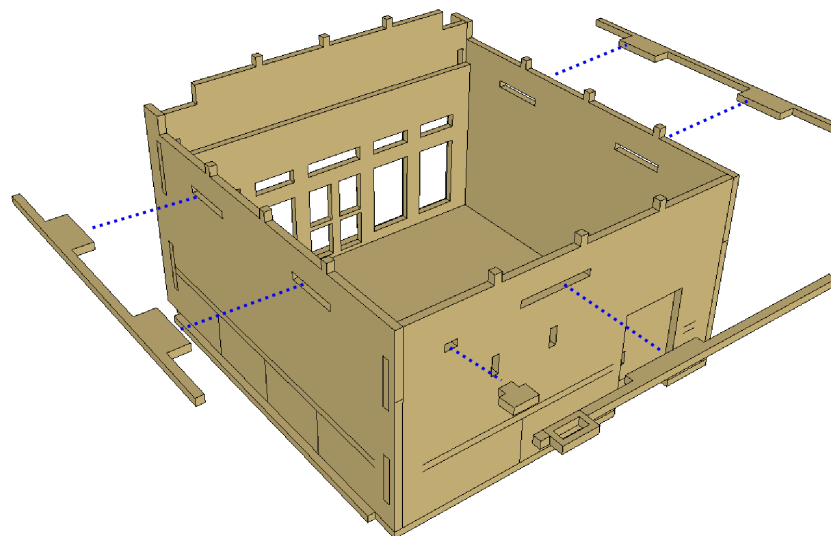
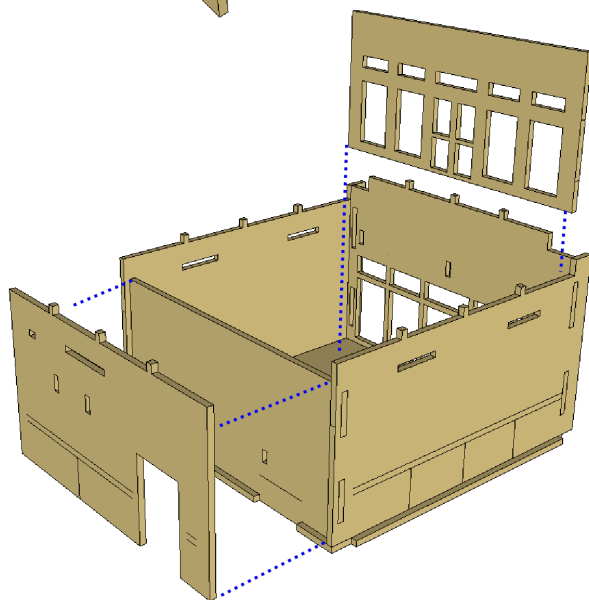
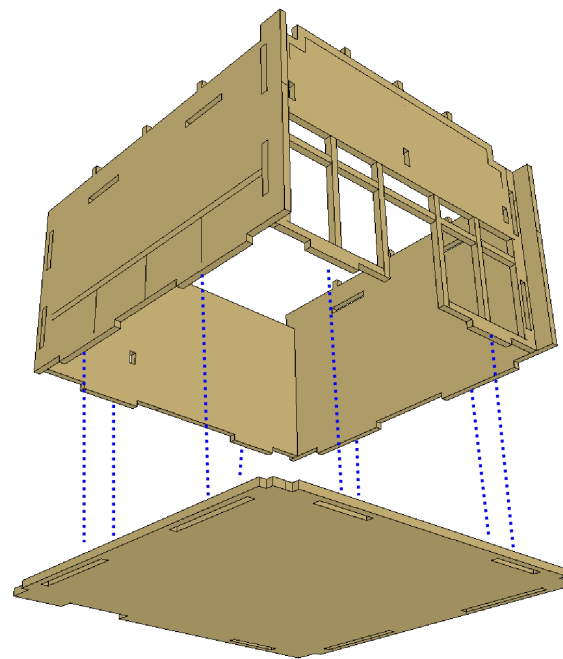
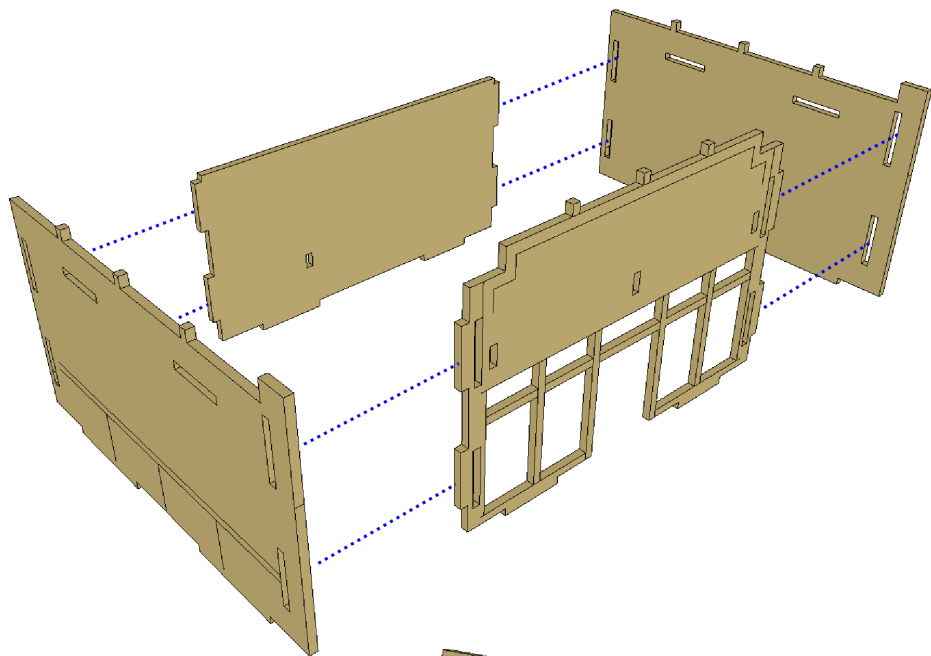


STRIP MALL

ASSEMBLY INSTRUCTIONS

OKAY GRAB YOUR PVA OR OTHER WOOD GLUE OF CHOICE AND LETS GET THIS THING TOGETHER! IT'S A PRETTY EASY KIT, BUT WE HAVE SOME HELPFUL TIPS FOR PUTTING THESE BAD BOYS TOGETHER!

THIS PAGE IS PRETTY STRAIGHTFOWARD, JUST USE CLAMPS AND RUBBER BANDS TO HELP YOU SECURE PIECES WHILE THEY ARE SETTING UP.



SLOW DEATH GAMES

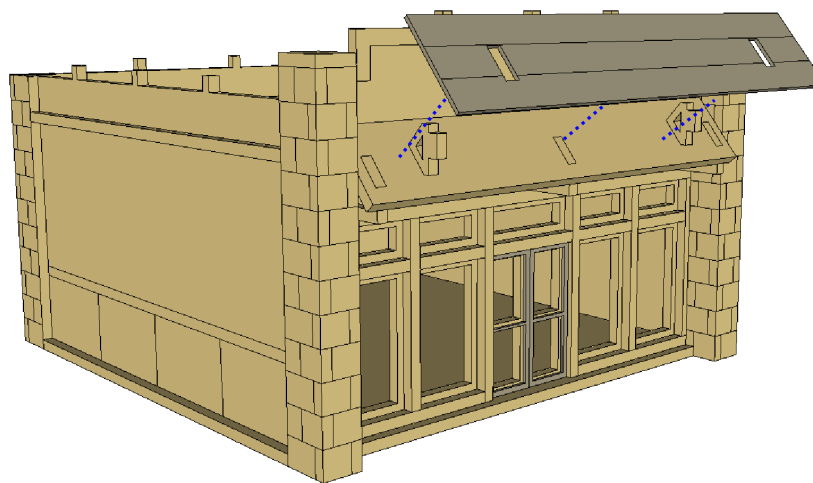
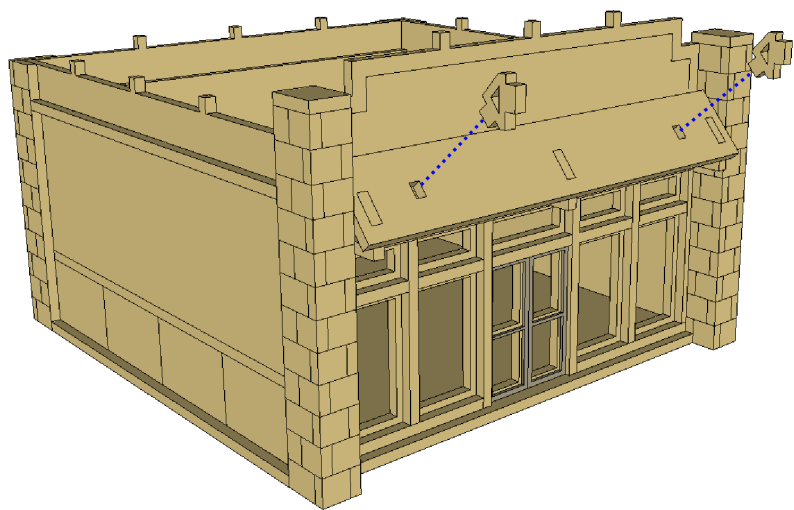
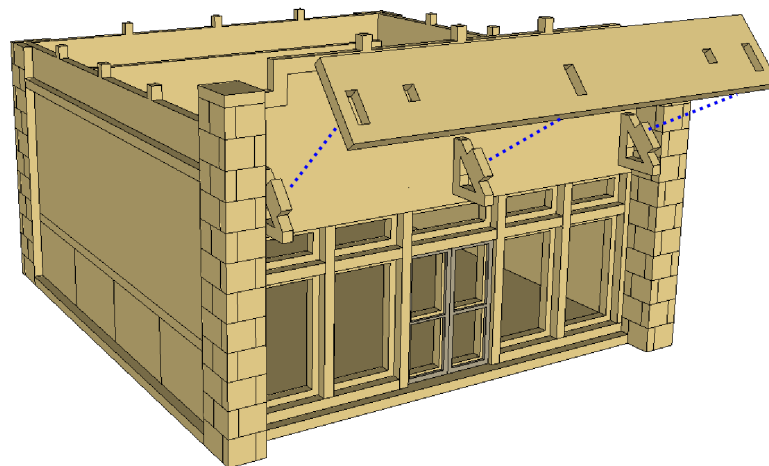
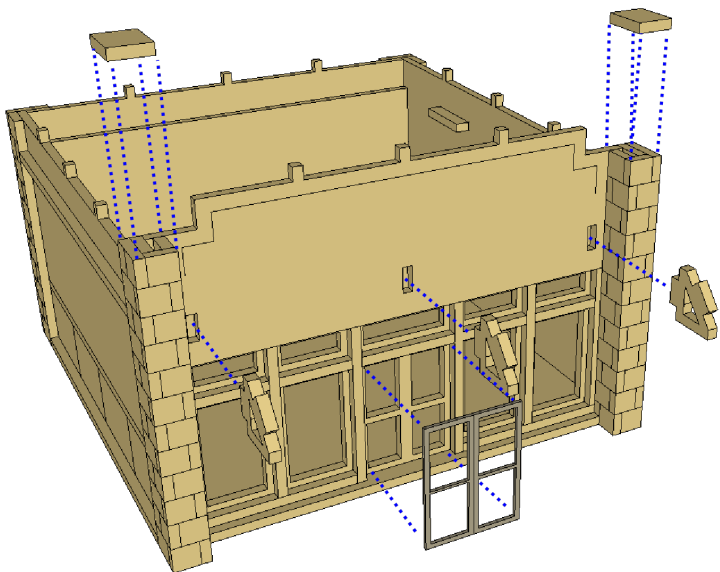


STRIP MALL

ASSEMBLY INSTRUCTIONS



THIS IS ALL PRETTY EASY, YOU GOT THIS!



SLOW DEATH GAMES



STRIP MALL

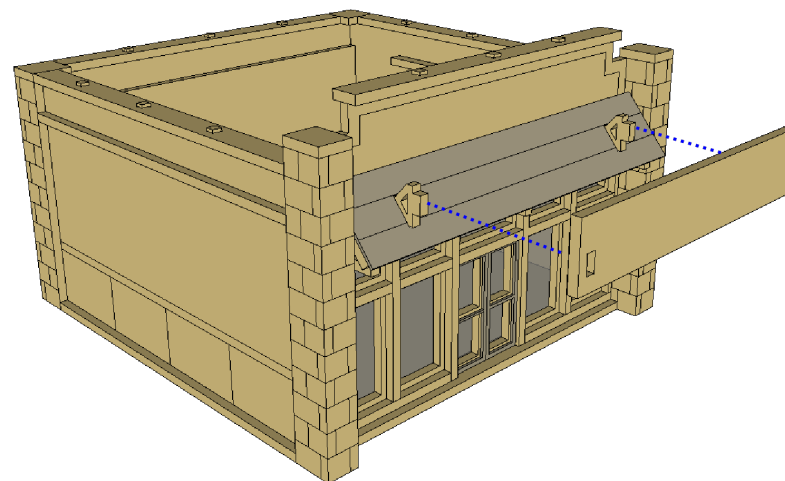
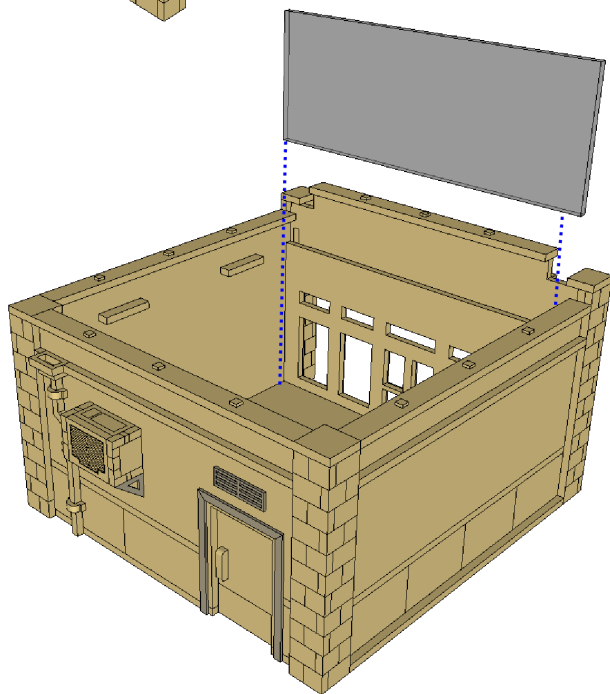
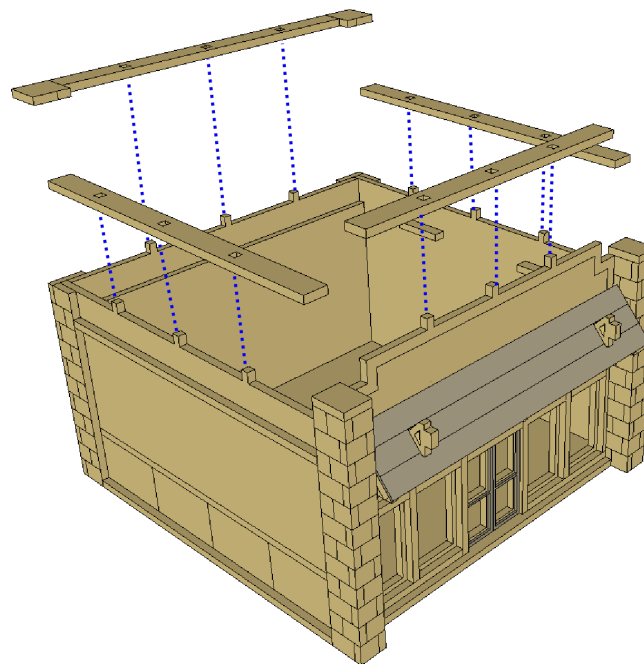
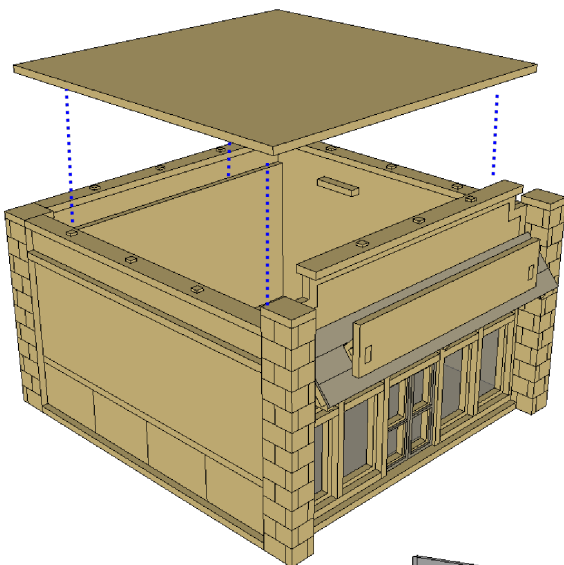
ASSEMBLY INSTRUCTIONS

IF YOU WANT YOUR ROOF TO BE ACCESSIBLE SO YOU CAN ACCESS THE INTERIOR, *DON'T GLUE* THE ROOF TRIM PIECES IN THE SECOND IMAGE ON THIS PAGE. THEY SHOULD SLOT ONTO THE TOPS OF THE WALLS AND HOLD THERE WITHOUT GLUE NO PROBLEM, BUT IF YOU GLUE THEM ON, THE ROOF WILL NO LONGER BE REMOVABLE. IF YOU DON'T WANT TO ACCESS THE INTERIOR, JUST GLUE THE ROOF AND TRIM PIECES IN PLACE.

IF YOU ARE GOING TO GLUE THE ROOF IN PLACE, YOU MIGHT STILL WANT TO WAIT TO GLUE THESE PIECES UNTIL AFTER PAINTING TO MAKE THE ACRYLIC PIECE EASIER TO INSERT AFTER PAINTING SO YOU DON'T HAVE TO WORRY ABOUT MASKING.

GLUE IN THE CLEAR ACRYLIC PIECE AFTER YOU'VE PAINTED YOUR MODEL. A NON FOGGING SUPERGLUE DESIGNED FOR CLEAR PARTS LIKE LOCTITE GLASS IS IDEAL FOR THIS KIND OF THING SO IT DOESN'T RUIN YOUR WINDOWS WITH HORRIBLE SOLVENT RESEDUCE. THERE ARE ALSO SPECIAL CANOPY GLUES FROM HOBBY STORES THAT WORK BUT THE CLEAR SUPERGLUES TEND TO WORK BETTER FOR ACRYLIC.

THE CARDBOARD PIECE SLIPS OVER THE TOP OF THE MOUNTING BRACKETS FOR THE SIGN.



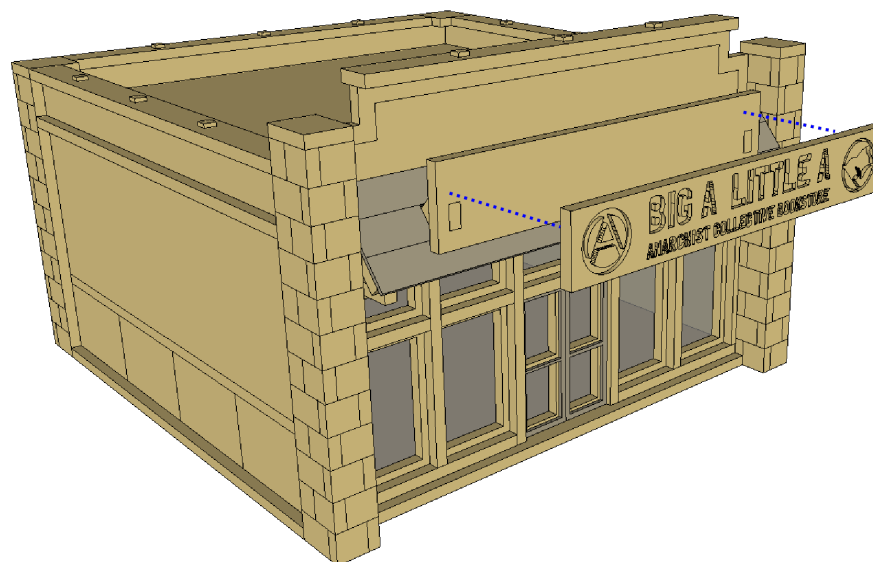
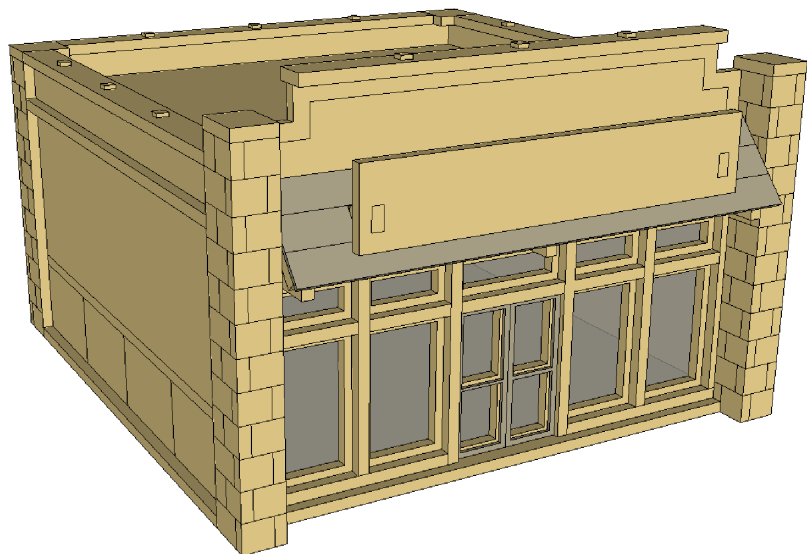
SLOW DEATH GAMES



STRIP MALL

ASSEMBLY INSTRUCTIONS

ADD ON THE SIGN OF YOUR CHOICE FROM THE SIGN PACK. THAT'S IT! NOW BUILD A BUNCH MORE TO COMPLETE YOUR SUBURBAN WASTELAND



SLOW DEATH GAMES

