



Project Name: \_\_\_\_\_

Location: \_\_\_\_\_

Item #: \_\_\_\_\_ Qty: \_\_\_\_\_

Model: \_\_\_\_\_

## FLOOR TYPE POTATO & VEGETABLE PEELER

MODEL:  XC-15  XC-15-T



XC-15(-T)

This is highly important for the kitchen where time, work and food savings are a must. Peel 15lbs.(7kg) – 20lbs(9kg) of potatoes in 1-3 mins. Get perfectly peeled, washed hard core vegetables ready for further preparation.

*\* The T in the model number indicates a TIMER is included with this model.*

### FEATURES AND CONSTRUCTION

- 15lbs (23kg) - 20lbs (9kg) capacity in 1-3 minutes
- 0.33 HP motor
- Easy to clean
- Adjustable 5-minute timer
- Stainless steel exterior and driver shaft
- Cast aluminum discharge chute
- Motor and drive unit sealed off against moisture to assure trouble free performance
- Dual V-belt drive provides speed reduction between motor and abrasive peeling disc for efficient peeling action
- Standard size V-belt for easy replacement
- Self-closing door

### ELECTRIC

115V / 60Hz / 1Ph  
208-230V / 60Hz / 1Ph  
220-240V / 60Hz / 3Ph  
Cord and plug included

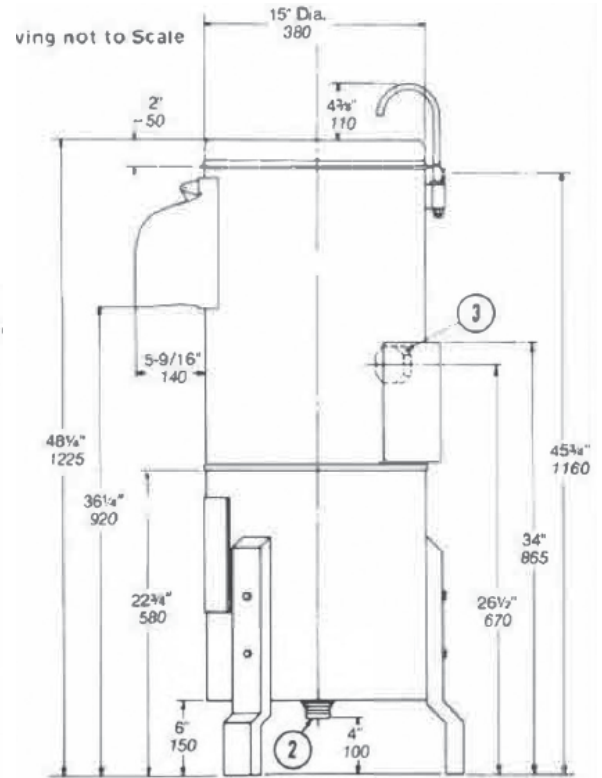
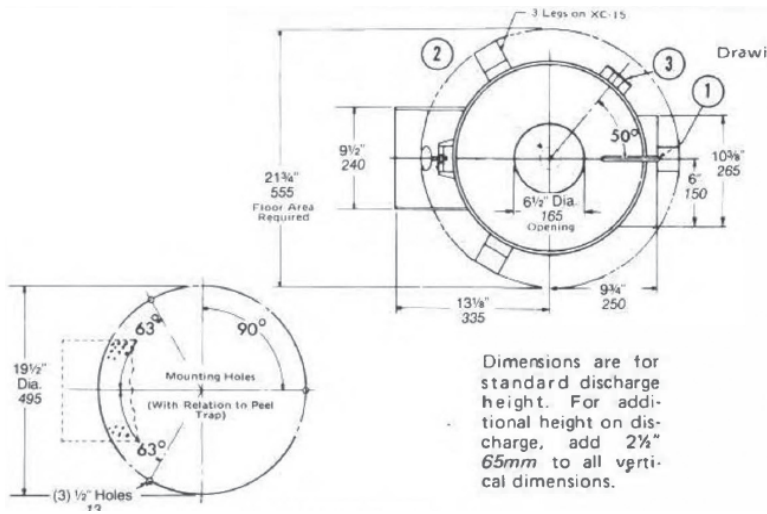
### 3RD PARTY APPROVALS



### BLAKESLEE WARRANTY (USA / CANADA)

Contact Blakeslee for warranty information.

Contact Blakeslee USA for details at [service@blakesleeinc.com](mailto:service@blakesleeinc.com) or 630.532.5021



NO.	CONNECTION	FITTING	FUNCTION
1	Cold Water	1/2" (13 mm) Hose Fitting	Peel Flushing Spray
2	Waste-Sewer	2" (50 mm) Drain Tubing	Cylinder Drain
3	Electrical	1/3 HP Motor	3-Wire 3" (76 mm)

## APPROXIMATE SHIPPING SPECIFICATIONS

MODEL	UNIT DIMENSIONS	SHIPPING DIMENSIONS	ELECTRICAL	AMPS	UNIT WEIGHT	SHIPPING WEIGHT
XC-15(-T)	20" x 20" x 25" (508 x 508 x 648 mm)	26.5" x 32.5" x 72" (673 x 826 x 1829 mm)	115V/60Hz/1Ph 208-230V/60Hz/1Ph 220-240V/6-Hz/3Ph	6A 3A 1.4A	140 lbs (63.6 kg)	168 lbs (76 kg)