



Project Name: _____

Location: _____

Item #: _____ Qty: _____

Model: _____

PLANETARY MIXER - 20 QUART FLOOR MODEL

MODEL: F-20-CA F-20SS



F-20-CA / F-20-SS

Blakeslee Planetary Mixers are available in 20, 30, 40, 60, and 80 quarts in either stainless steel or cast aluminum. Blakeslee planetary mixers are engineered with an agitator that attaches to a rotating shaft, while the mixing bowl remains stationary. Interchangeable accessories / attachments allow the end user to consistently mix ingredients. Planetary mixers are available in 2, 3 and 4 speed transmissions and perform flawlessly.

FEATURES AND CONSTRUCTION

- F-20-CA (Cast Aluminum)
- F-20-SS (Stainless Steel)

- CA: Cast Aluminum with grey enamel finish
- SS: Stainless Steel mixer base and motor housing with high-polished finish
- Heavy-duty 3-speed transmission
- Available in cast aluminum or stainless steel
- 0.5 HP motor
- 20 qt (19 L) mixing bowl comes standard
- Spring-assisted handle for raising / lowering bowl
- Bowl automatically locks in "UP or DOWN" position
- Adjustable automatic 15 minute timer
- Front mounted No. 12 Power takeoff port
- Easy to use and clean
- Equipped with batter beater and wire whip attachments

SUPPLIED EQUIPMENT

- 20 qt (19 L) stainless steel mixing bowl
- "B" Batter beater
- "W" Wire whip
- Automatic timer
- 6 ft (1.8m) cord and approved plug

OPTIONAL ACCESSORIES

- "H" Dough hook
- Shredder plates (4 sizes)
- Food / meat chopper
- 9-vegetable slicer with hopper front
- Bowl extension ring
- Splash cover

ELECTRIC

120V / 1Ph	9.8 Amps
230V / 1Ph	4.9 Amps
230V / 3Ph	2 Amps

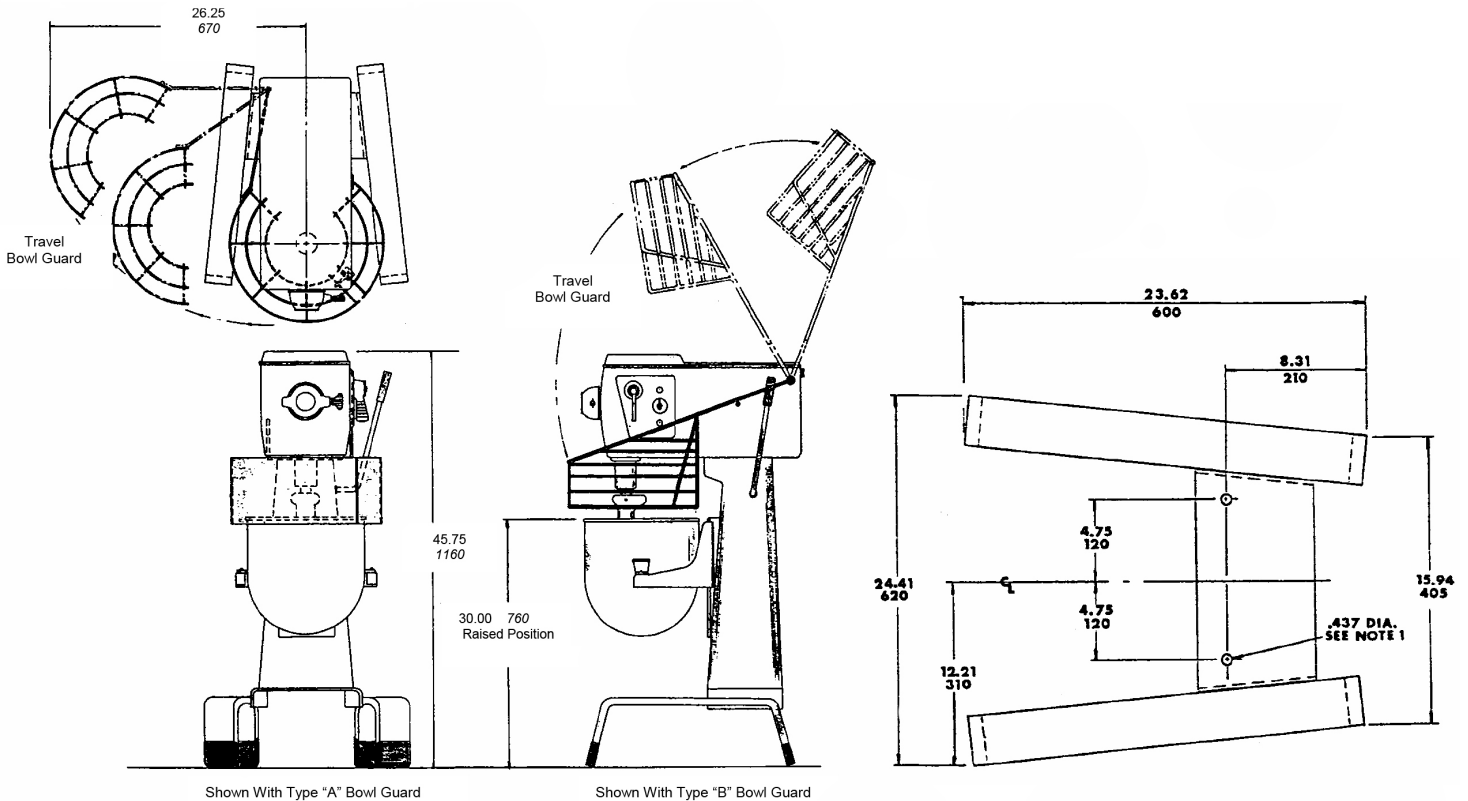
3RD PARTY APPROVALS



BLAKESLEE WARRANTY (USA / CANADA)

Blakeslee mixers are warranted for one year from date of installation against defective materials and workmanship.

Contact Blakeslee USA for details at service@blakesleeinc.com or 630.532.5021



Shown With Type "A" Bowl Guard

Shown With Type "B" Bowl Guard

SPEED	BEATER SPEED (RPM)	AUXILIARY SPEED (RPM)
Low	102	57
Medium	180	101
High	354	197

6-foot 1.8m cord and plug furnished as part of standard equipment on 110-volt models. If a permanent connection is preferred, a tapped outlet is furnished for 1/2" (13mm) conduit. Minimum wire size recommended - No. 14 A.W.G.

MODEL	DIMENSIONS	DOMESTIC CARTON	EXPORT CRATED	EXPORT BOXED	EXPORT CUBED
F-20-CA	32.5" x 37.5" x 52" (826 x 953 x 1321 mm)	210 lbs (95.3 kg)	260 lbs (118 kg)	300 lbs (136 kg)	24.4 ft (0.69m)
F-20-SS	32.5" x 37.5" x 52" (826 x 953 x 1321 mm)	210 lbs (95.3 kg)	260 lbs (118 kg)	300 lbs (136 kg)	24.4 ft (0.69m)

INSTALLATION

- Select a location for your mixer that will save time and steps for the operator. Allow ample work space in front and to the sides of the mixer.
- Holes are provided for anchoring the mixer to the floor, if desired. Anchoring is required for shipboard use.