



Project Name: _____

Location: _____

Item #: _____ Qty: _____

Model: _____

DOOR TYPE DISHWASHERS

MODEL: D-8 D-8LT D-8B



D-8 / D-8LT / D-8B

Single door type dishwasher with spring counterbalanced three-way door opening as one unit to make it possible for straight through or corner installation. Equipped with electrical timing device on which with a touch of a button will start an automatic cycle consisting of a timed wash of 49secs and 11 sec final rinse. With the minimum number of moving parts the D-8 will give you long, trouble free service with most effective wash.

FEATURES AND CONSTRUCTION

- D-8 Electric Heat
- D-8LT Electric Heat / Low Temp
- D-8B Electric Heat with 12kW Booster
- Capacity: 55 racks per hour
- Built-in interlock safety switch
- Stainless steel pumps
- Rugged, easily removable drains and scrap screens
- One model for straight through or corner operation
- Extremely simplified control circuitry for utmost in dependability and easy servicing
- Low watt density electric heating elements for extended heater life and energy saving
- One machine mounted electronic control panel with separate user interface for each motor, overhead magnetic starter and low voltage protection. One common electrical connection to machine.
- Dial type wash and final rinse thermometers machine mounted
- Automatic wash tank fill
- Welded stainless steel base
- Stainless steel legs and adjustable feet
- Removable stainless steel front panel
- Wash Tank: 180gal/ 680L (US)/min
- Packless seal type
- Stainless steel housing
- Motors – Wash Pump 1.5 HP/ 1119W
- Power Wash – Revolving upper and lower wash sprays with removable wash arms
- Final Wash – 1.3gals / 4.9L per min (spray evenly from nozzles above and below)
- Revolving lower final rinse easily removable
- Upper final rinse is stationary with easily removable nozzle
- Wash tank capacity – D-8 ... 18.5(gal) 70(L)

ELECTRIC

208-240v / 60hz / 1Ph	Electric with 15kW Booster	96.3 Amps
208-240v / 60hz / 1Ph	Electric with 12kW Booster	81.8 Amps
208-240v / 60hz / 3Ph	Electric with 15kW Booster	62.5 Amps
208-240V / 60hz / 3Ph	Electric with 12kW Booster	54.2 Amps
480V / 60hz / 3Ph	Electric with 15kW Booster	28.8 Amps
480V / 60hz / 3Ph	Electric with 12kW Booster	25.0 Amps

Optional: Separate electrical connections available for electric boosters.

3RD PARTY APPROVALS



BLAKESLEE WARRANTY (USA / CANADA)

Blakeslee dishwashers are warranted for one year from date of installation against defective materials and workmanship.

Contact Blakeslee USA for details at service@blakesleeinc.com or 630.532.5021

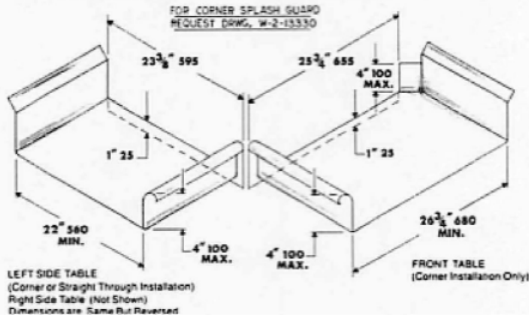
STANDARD EQUIPMENT

- 2 dish racks and 2 combination rack for cups, bowls, glasses, and silverware

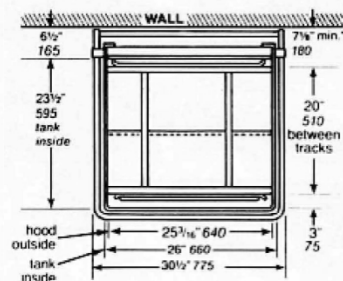
OPTIONAL EQUIPMENT

- Extra dish and combination racks
- 15 k.w. electric booster for 70°F rise.

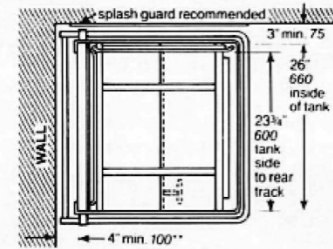
DISHTABLE DIMENSION INFORMATION



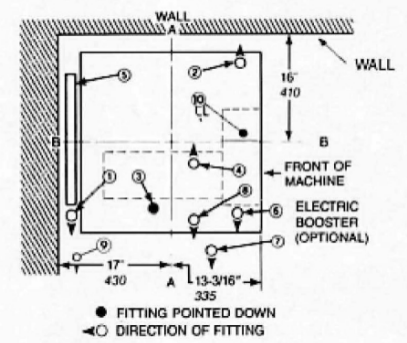
Locating Diagram STRAIGHT THROUGH INSTALLATION



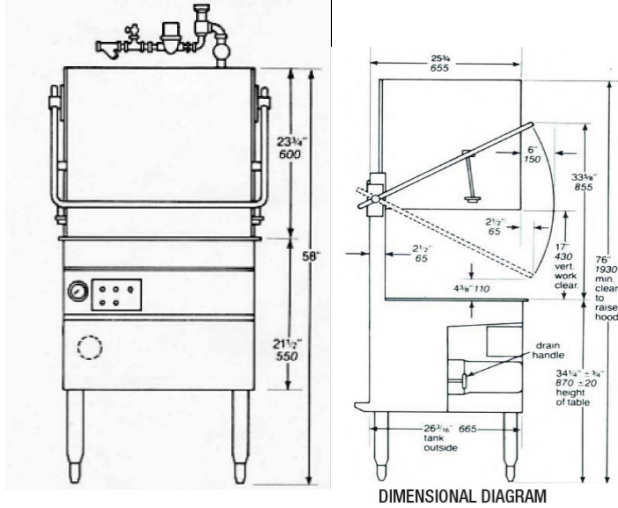
CORNER INSTALLATION Right Side of Unit Always Faces Wall



TOP VIEW OF MACHINE



Dimensional Diagram



NO.	SERVICE CONNECTION	FITTING	FUNCTION	DIM. from FLOOR		DIM. from C ₁ AA		DIM. from C ₁ BB	
				inches	mm	inches	mm	inches	mm
1	180°F HOT WATER INLET WITHOUT BOOSTER	3/4" NPT FEM.	TANK FILL AND FINAL RINSE	60-1/4	1530	14-5/8	370	12-1/2	320
2	ELECTRIC	1-1/8" DIA. HOLE	1.5HP MOTOR AND TANK HEAT	25	635	10	250	10-1/2	270
3	DRAIN	2" NPT MALE	WASTE TO SEWER	12-1/2	320	2-3/8	60	9-1/2	240
4	STEAM INJECTOR	3/4" NPT FEM.	STEAM TANK HEAT	10	250	9-1/2	240	9-1/2	240
5	STEAM COIL-IN	3/4" NPT. FEM.	STEAM TANK HEAT	10	250	6-3/4	170	13-1/2	345
6	STEAM COIL-OUT	1/2" NPT FEM.	STEAM TANK HEAT	10	250	3-1/4	90	10-1/4	260
7	180°F HOT WATER INLET WITH ELECTRIC BOOSTER	3/4" NPT FEM.	TANK FILL AND FINAL RINSE BOOSTER	5-1/2	140	14-5/8	370	28	711
8	ELECTRIC	1-5/16" DIA. HOLE	FINAL RINSE BOOSTER	3-1/4	83	12-1/2	318	1	25

EQUIPMENT

- Electric Tank Heat
- 3 k.w. heating element, thermostatically controlled with automatic cut-off
- Final Rinse
 - Choice of Hot Water or Chemical Sanitization
 - Machine mounted 12 or 15 k.w. electric booster (D-8B)
 - Chemical dispenser (D-8LT)

General Notes:

- Optional 12 k.w. electric booster, 15 k.w. electric hot water boosters for final rinse.
 - 12 or 15 k.w. electric booster mounted on machine main frame, below dishwasher tank.
 - Electric thermostats in dishwasher tank and booster (machine mounted) are wired to electric control panel on dishwasher. Electric heating element in dish machine tank is wired directly to the control panel. Please have electric contractor to furnish and install a disconnect switch in line ahead of dishwasher in compliance with local code. Optional electric final rinse boosters to be wired to a separate power line disconnect. 15 k.w. electric boosters mounted on floor stand 12" (305 mm) from left side of dishwasher—all piping furnished for one easy connection to machine. For service connection contact factory.
- All vertical dimensions from floor line subject to 3/4" (20mm) increase or decrease due to adjustable feet.
- Recommended rinse water flow pressure: 15 to 25 P.S.I. (103 Bar to 1.75 Bar.)
- All final electrical and plumbing connections to be furnished by owner. In making service connections, allowance must be made for normal variations in pipe work.

APPROXIMATE SHIPPING SPECIFICATIONS

MODEL	DOMESTIC CRATED	EXPORT BOXED	EXPORT CUBED	WEIGHT
D-8 / D-8LT / D-8B	402 lbs (182.5 kg)	502 lbs (228 kg)	54.7ft (1.55m)	550 lbs (249 kg)