



IMPORTANT NOTE

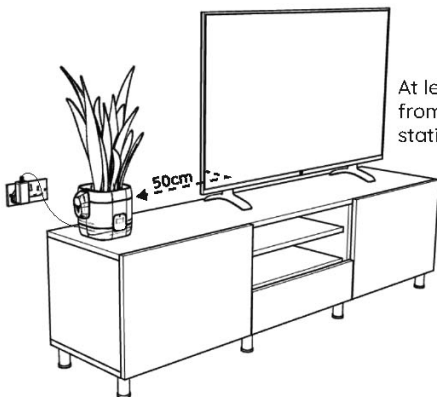


Only use Zero2.5 adaptors.
Other adaptors in the market are incompatible and may result in damage of adaptors in the event of improper usage.

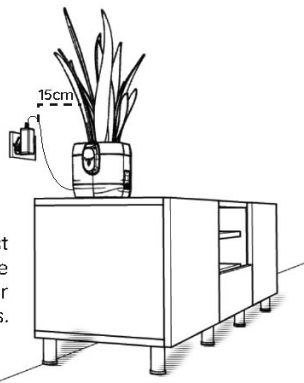


Magnetic field may interfere with pacemakers.
Avoid close contact.

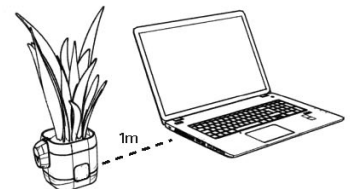
FINDING A SUITABLE SPOT



At least 50cm away from TV to avoid static interference.



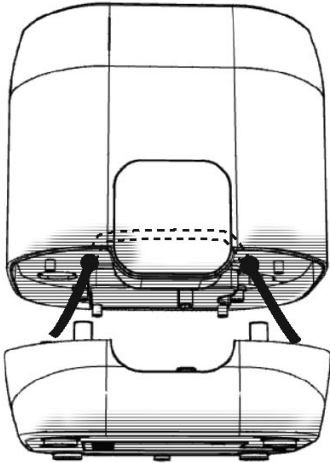
Plant to be at least 15cm away from the wall. Elevate pot for better ion emissions.



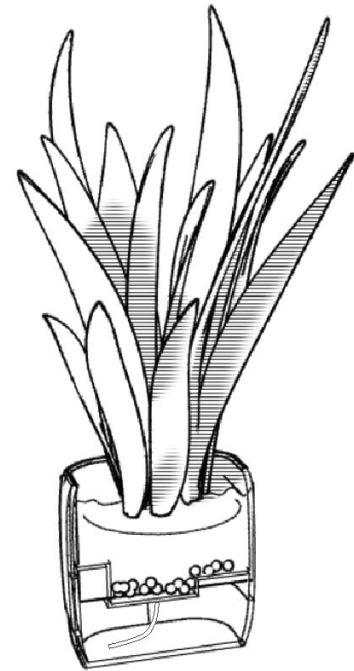
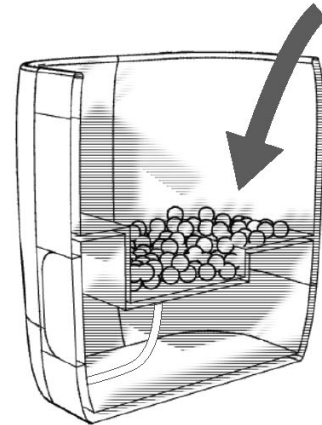
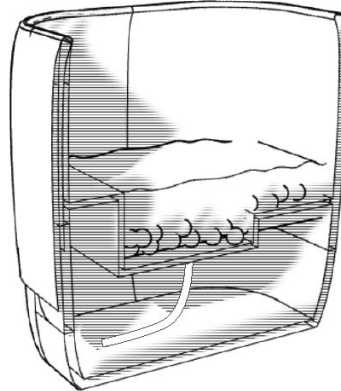
At least 1m away from any display devices (ie laptops, monitors) to avoid static interference.

POTTING YOUR SANSEVIERA

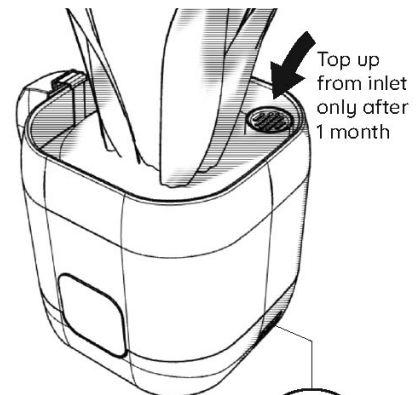
- 1** (Skip this step if the wick is pre-installed) Push the watering wick through the two holes down to the bottom. Tie two knots to prevent slipping. **Please do not remove this wick as it is the main component of the self-watering system.**



- 2** Pour in expanded clay (lecca) balls at the bottom of the pot.
- 3** After the lecca balls have covered the bottom of the pot, pour soil over it.



- 4** Carefully place the plant into the pot and make sure that the soil covers the roots.
- 5** Water directly through soil for the first month. Thereafter, water may be added via the water inlet.



WATERING

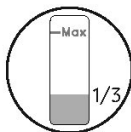
When watering, turn off the power

Watering instructions is only applicable to supplied plant, sanseveria (snake plant).

Water only when the soil feels completely dry. Check by sticking finger into soil.

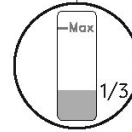
Pour 100ml of water into soil every 2 weeks. Do not water daily.

Make sure that the water level does not exceed 1/3 of the stated maximum level.

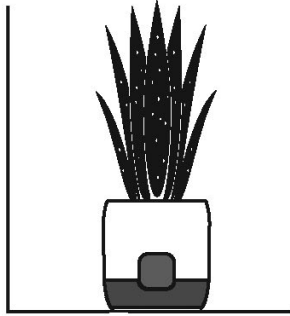


Sansevieria does not need too much water

Make sure that the water level does not go beyond 1/3 to avoid overwatering.

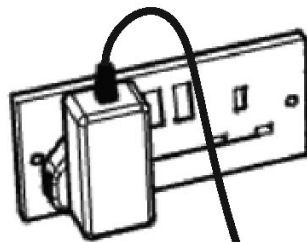


SETTING UP YOUR PLANT



- 1 Make sure that the plant is not touching the wall or any objects

- 2 Firmly insert the metal clip into the soil at the side of the pot



- 3 Plug in the power adaptor and switch on the power.
Only use the supplied Zero2.5 power adaptor.

ELECTROSTATIC WARNING



Do not touch the ionizer clip when the power is on.



Avoid touching plant as there will be a build up in static electricity.

SANSEVIERA LIGHT CONDITION



Sansevieria (snake plants) prefer bright, indirect light. However, they also grow well (albeit more slowly) in shady corners and other low-light areas of the home. Keep the plant in a warm spot.

COMMON PLANT SYMPTOMS

Droopy leaves

Too much water

Brown spots on leaves

Too little water

Spidermites pest infection

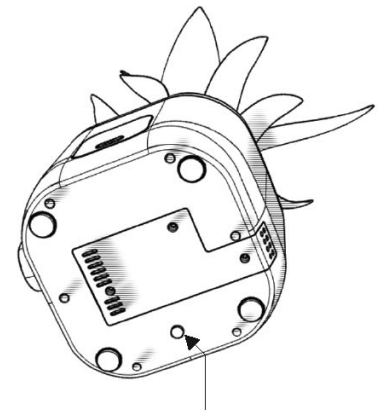
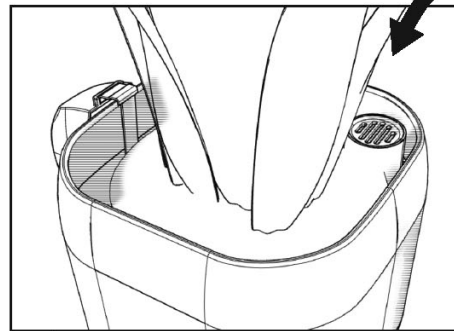
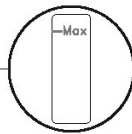
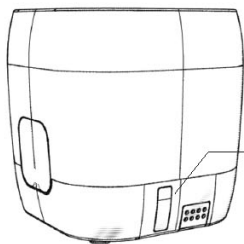
White moulds

Mealy bugs pest infection

Brown tips on leaves

Negative air ions (NAIs) are emitted from the tips of plant leaves. Thus tips of the leaves may turn brown. However it will not affect the performance of ion emission. Trimming off the brown parts is a good maintenance practice

SELF WATERING SYSTEM



If water reservoir is dry, you may refill directly through the inlet on the top

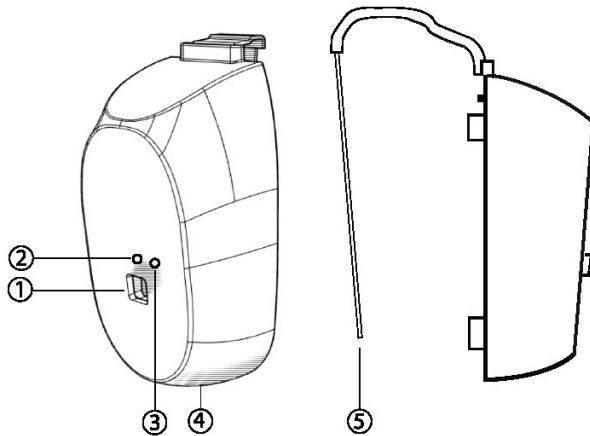
Excess water or debris in the water reservoir can be drained off by unplugging this rubber cap.

PLANT REPOTTING

If you wish to repot with a different type of plant, you may get a replacement from any plant shops.

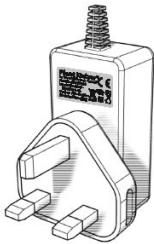
Please visit our website at www.negativeairion.com for more information on recommended plants for repotting.

SI210 IONIZING CLIP



- ① Power ON/OFF Button
- ② Power LED Indicator
- ③ Overload LED Indicator
- ④ DC Jack
- ⑤ Clip

POWER ADAPTOR



Only use Zero2.5 adaptors for Zero2.5 products.
 Do not remove the AC adaptor if your hands are wet.
 Do not use if near flammable gases or liquids.

LED LIGHT STATUS

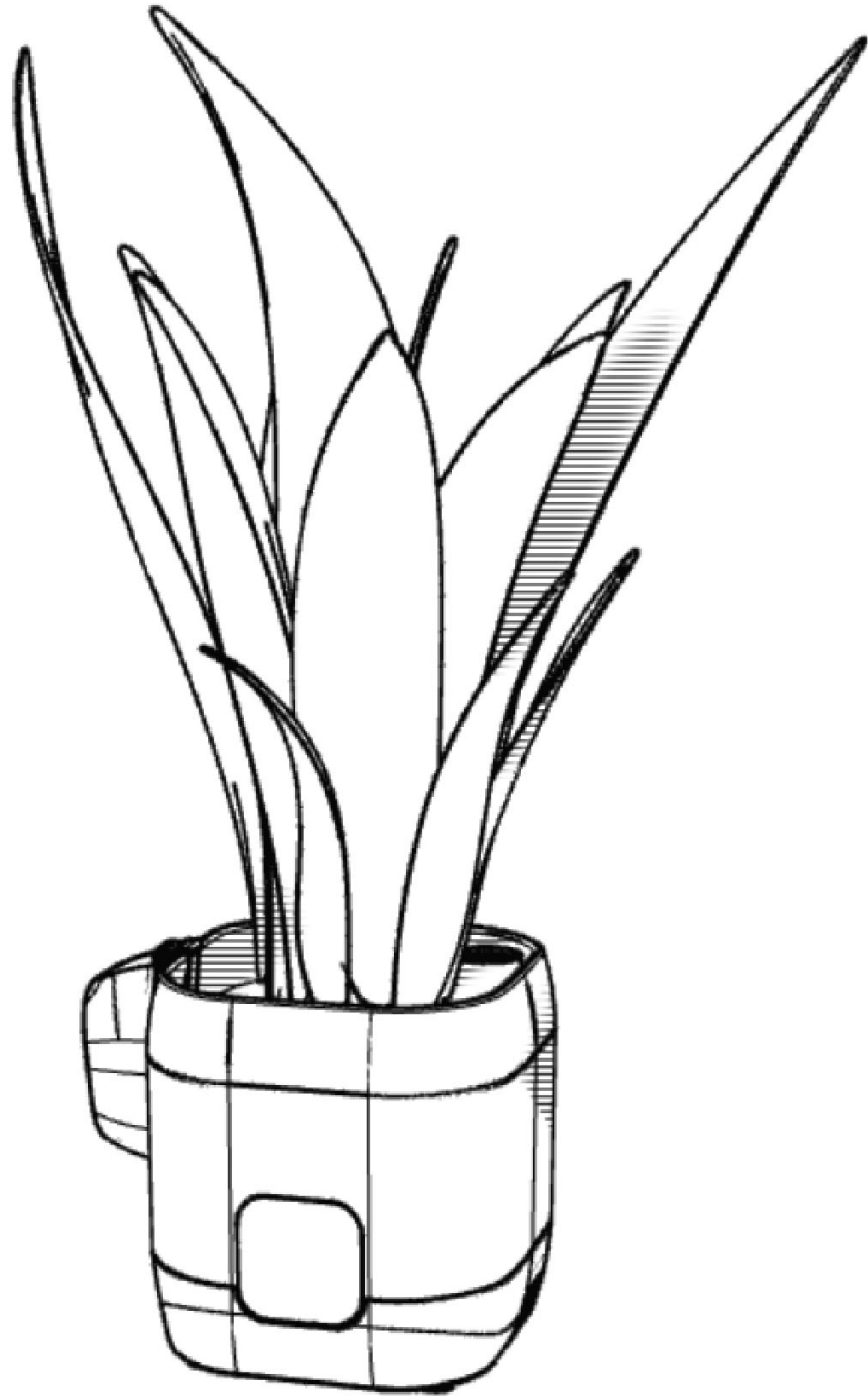
Unit's light is not on	<p>Check if power plug is properly inserted in the wall socket. Check if wall socket is turned on. Check if DC Jack is correctly attached, make sure it is pushed all the way into the Smart Ionizer. Check if the unit is turned on. Check if the wall socket is working by plugging in another electronic device. Contact us at customerservice@zero2-5.com if issues persist.</p>
Unit's light is red	<p>Your unit is overloaded. Check if pot is properly insulated. (Are you using a plastic pot? Is the environment dry?) Ensure plant is not touching any other surfaces such as wall, floor, furniture or other plants.</p>
Unit's light is green	<p>This is the indication that your unit is working properly.</p>

TECHNICAL SPECIFICATIONS

IP Rating	IP65	Dimensions	Pot - 165mm X 165mm X 165mm
Required Power Adaptor	Zero2.5 Plant Ionizer Adaptor		
Operating Temperature	0° (32°F) to 40°C (104°F)		
Storage Temperature	-20° (-4°F) to 70°C (158°F)	System Input	AC100-240V, 50/60Hz, 0.15A
Room Size	10-15m ²		

WARRANTY

All electronic components come with a warranty of 1 year.
 Warranty does not include damages due to accidents.



SP2800

Designed in Singapore by:
Zero2.5 Biotech Pte Ltd
Block 67, Ayer Rajah Crescent, #03-10/11,
Singapore 139950
Contact us: customerservice@zero2-5.com