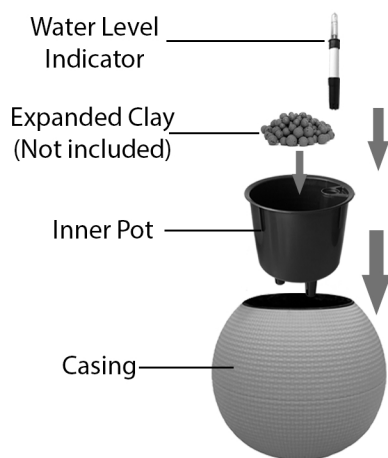


Important Notes (Please read before installation)

1. Self-watering plastic pots are always recommended. Alternatively, you can use your own pots that are made of well insulated materials like plastic. **Please do not use ceramic and metal pots.**
2. Negative air ions will create static in close proximity of the plant, **avoid touching the plant when power is on.**
3. Avoid touching the probe pin of the Plant Ionizer when power is on.
4. **Only the supplied power adaptor is to be used with Zero2.5 products.**
5. Do not remove the AC adapter and USB cable if your hands are wet.
6. Not intended for use in environments where there is a chance of explosive gases or fine particulate matter.
7. Do not use flammable liquids or gases on or near the Plant Ionizer.
8. Please water the plant once you receive it.

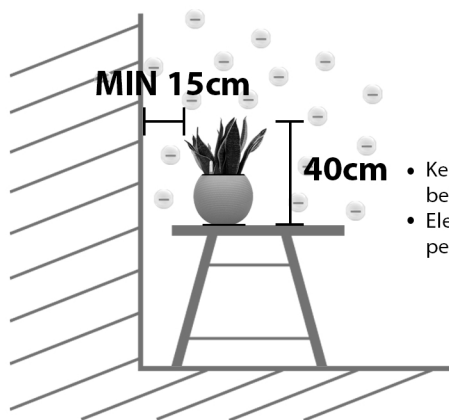
Instructions For Use

Installation

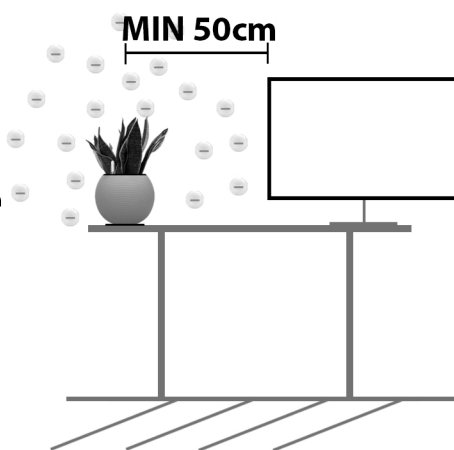


1. Buy expanded clay (4-10mm) such as LECA (It helps to prevent soil to go into water reservoir and absorb water for roots) and one of the recommended plants of your preference at local plant nurseries or florists.
2. Put inner pot into the outer casing.
3. Install water level indicator on the inner pot.
4. Put a layer of expanded clay (not included) to cover the bottom of the inner pot.
5. Repot your plant.
6. Water the plant until the water level indicator is in between MIN and MAX label.

7. Clip the stimulator and make sure the clip goes into the soil of plant pot.
8. Power up plant pot and the green LED Power Indicator will turn on. (If red LED turns on, please refer to troubleshooting guide.)

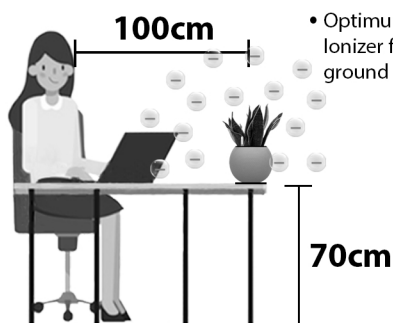


- Keep a minimal distance of 15cm between plant leaves and wall.
- Elevate plant pot for better performance of ion emission.

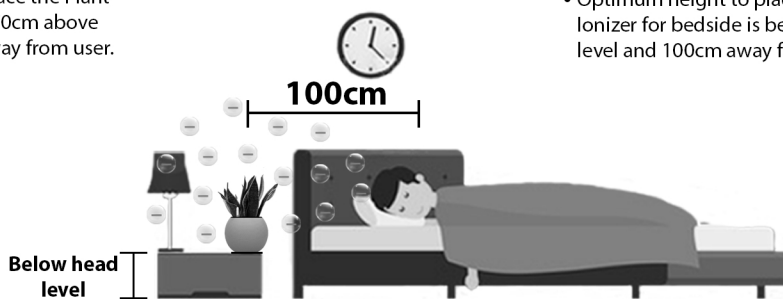


- Keep a minimal distance of 50cm between plant leaves and monitor
- Use a rubber mat under the pot for better performance of ion emission. (Rubber mat is not included)

Use Cases



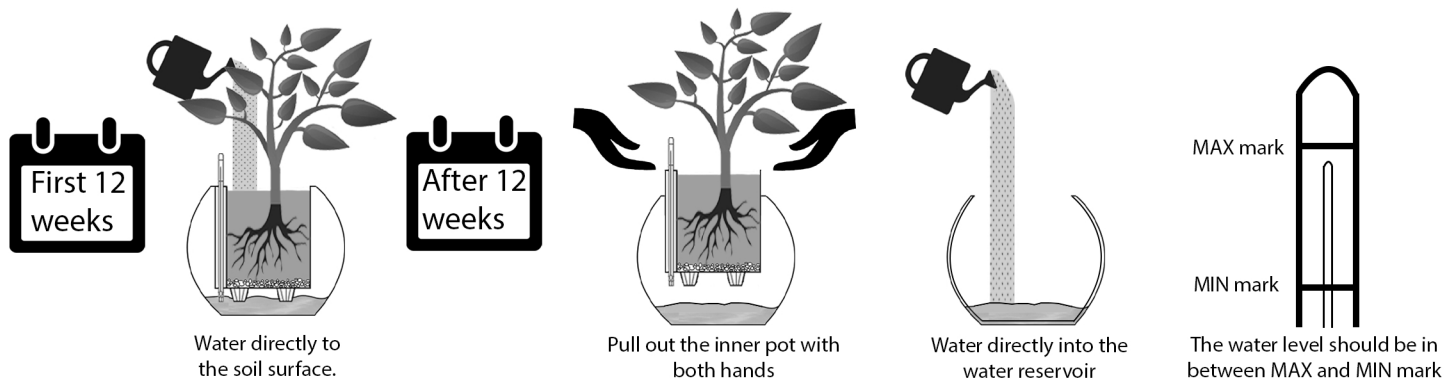
- Optimum height to place the Plant Ionizer for desktop is 70cm above ground and 100cm away from user.



- Optimum height to place the Plant Ionizer for bedside is below head level and 100cm away from user.

Plant Maintenance

1. They are hardy plants and only minimum maintenance is required. For the first 12 weeks, Add 200ml of water directly onto the soil surface once a week. After 12 weeks, water directly into the water reservoir when indicator goes below MIN mark. Make sure the water level indicator is always in between MAX and MIN mark.



2. Negative air ions (NAIs) are emitted from the tips of plant leaves. Thus tips of the leaves may turn brown. However, it will not affect the performance of ion emission. Trimming off the brown parts is good maintenance practice.

Usage With 3rd-party Devices

Zero2.5 Smart Ionizers work with 3rd-party IoT devices.

1. With Kaiterra Laser Egg and TP-Link Smart Plugs, you can remotely control ON/OFF of our Zero2.5 Smart Ionizers with air quality alert rules.
2. With Kaiterra Laser Egg air indicators, you can monitor indoor air quality with our Plant Ionizer App.

Troubleshooting



Unit's light is not on	<p>Check if power plug is properly inserted in the wall socket.</p> <p>Check if wall socket is turned on.</p> <p>Check if DC Jack is correctly attached, make sure it is pushed all the way into the Smart Ionizer.</p> <p>Is the unit turned on?</p> <p>Check if the wall socket is working by plugging in another electronic device.</p> <p>Contact us if the light is still not on.</p>
Unit's light is red	<p>This is the indication that your unit is overloaded.</p> <p>Check if plant is properly isolated. (Are you using a plastic pot? Is the environment dry?)</p> <p>Ensure plant leaves are not touching any other surfaces such as wall, floor, furniture or other plants.</p> <p>Put a rubber mat under the pot to check whether the red light is still on.</p> <p>Contact us if the red light is still on.</p>
Unit's light is green	<p>This is the indication that your unit is working properly.</p>

Warranty

All electronic components have a limited warranty of 1 year.
 Self-watering pot has a limited warranty of 3 months.
 Plant is complimentary and has a warranty of 7 days.

Technical Specifications

IP Rating	IP65	Dimensions	96Lx39Hx43W mm
Required Power Adaptor	Zero2.5 Yellow Adaptor		
Operating Temperature	0°C (32°F) to 40°C (104°F)	System Input	AC100-240v, 50/60Hz, 0.15A
Storage Temperature	-20°C (-4°F) to 70°C (158°F)		
Room Size	10-15m ²		