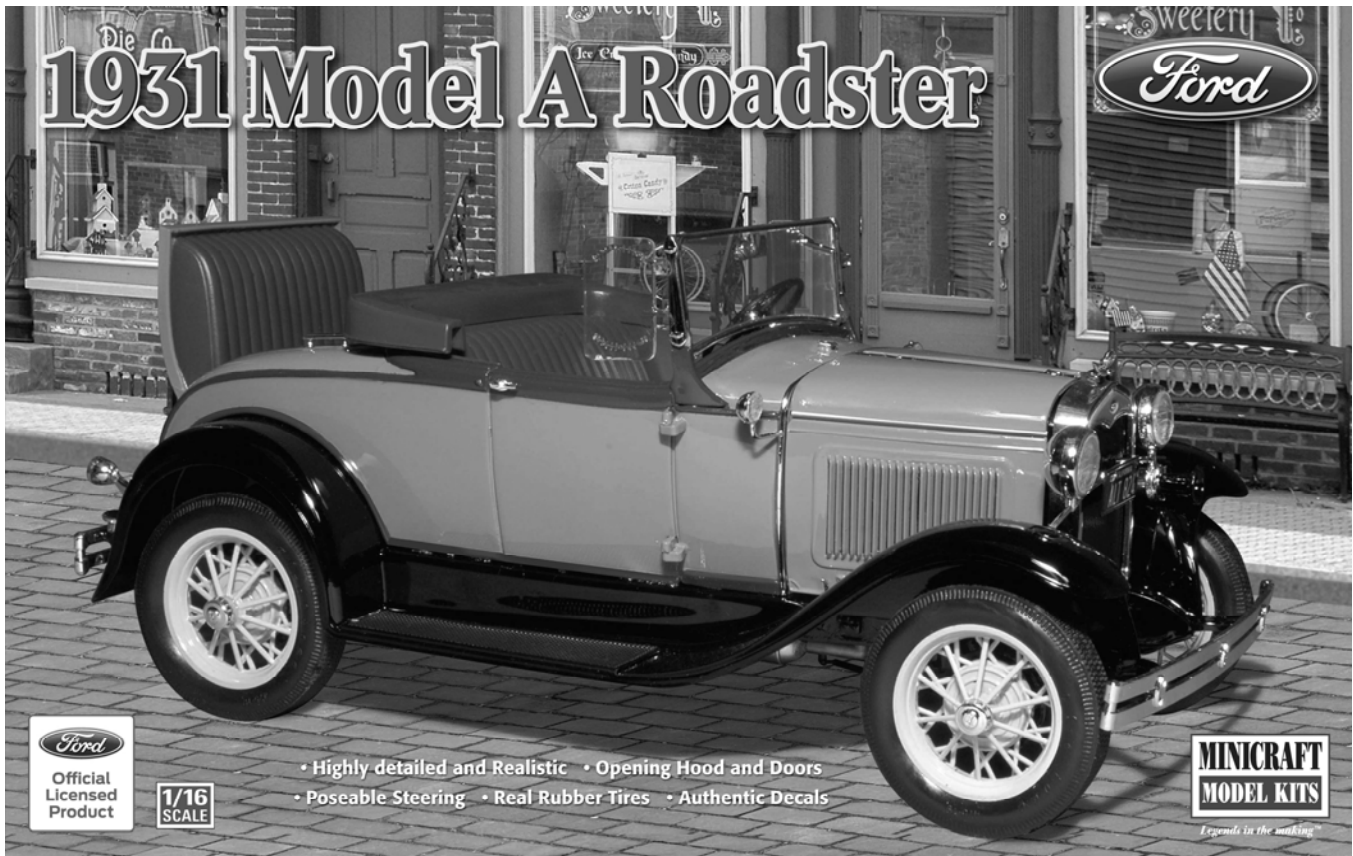


Model A Roadster



The Ford Model "A" was designed to replace the very successful Model "T". Despite the fact that the Model A was released just as the United States entered the "Great Depression" it is considered one of the most successful automobile designs of all time.

The Ford Model "A" was one of the most versatile automobiles ever, having been produced in many versions including roadster, coupe, 2 door sedan, 4 door sedan, pick-up, sedan delivery to name only the most popular! The Model "A" deluxe roadster represents the pinnacle of Model A design by combining the rugged and economical four cylinder engine in a roadster that offered top down enjoyment and sporty good looks and seating for 4 using the unique "rumble seat".

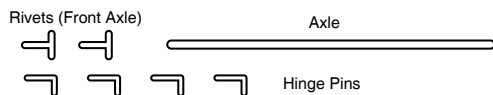
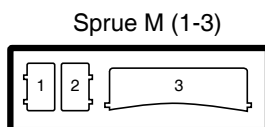
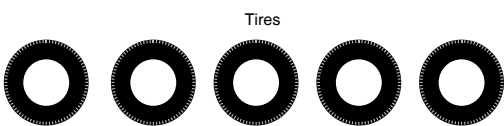
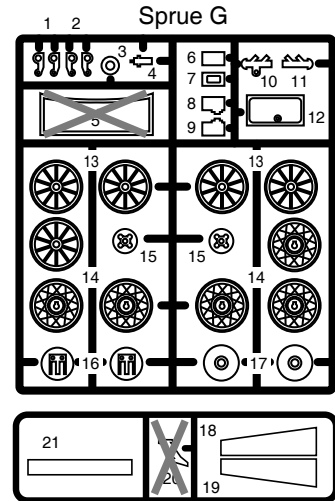
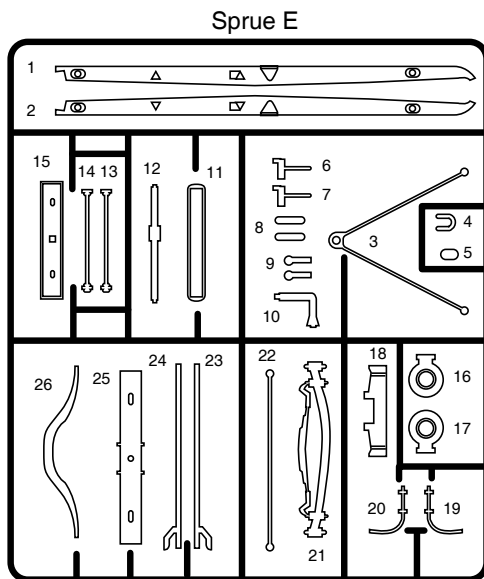
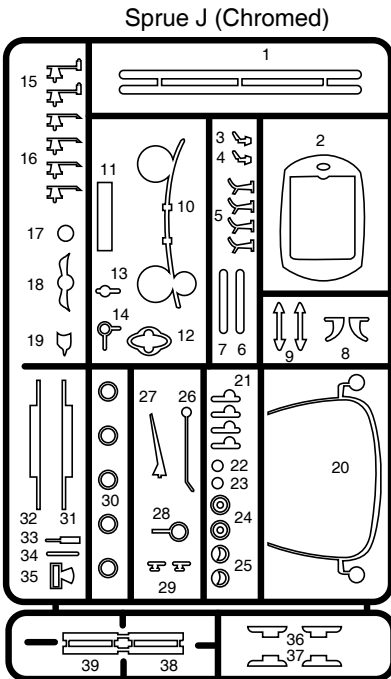
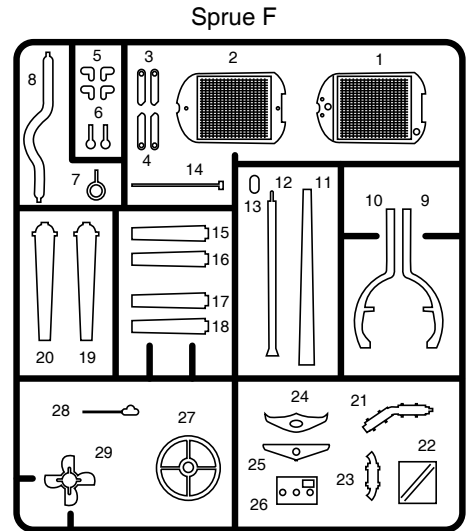
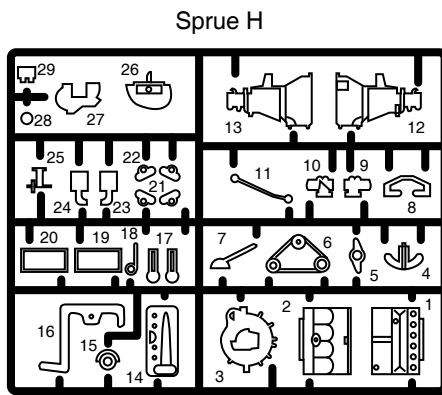
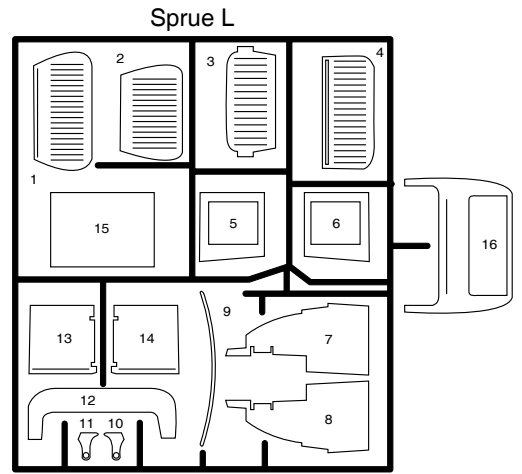
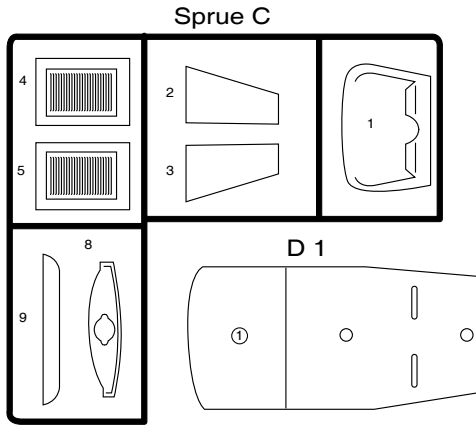
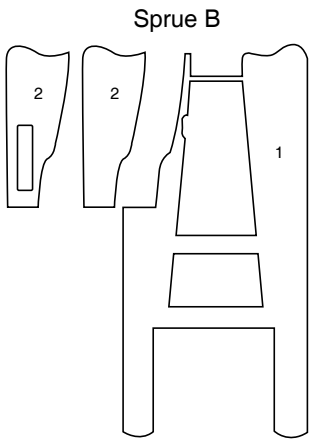
This Minicraft kit represents the deluxe roadster with almost all of the extra options one could add including fender mounted spare tire, rumble seat, chrome luggage external luggage rack and retractable canvas top as produced in 1931. The model offers excellent detail in 1/16 scale, with a flat-head 4 cylinder engine, opening doors, detailed interior, folding rumble seat, original style spoke wheels with real rubber tires and a fully detailed chassis with pose-able steering.

Minicraft Models, 1501 Commerce Drive, Elgin IL 60123 USA

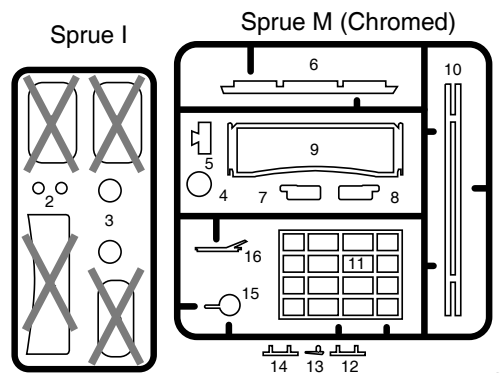
www.minicraftmodels.com

Printed in China

11236



Parts marked **X** are not for use.



BEFORE BEGINNING ASSEMBLY

Your MINICRAFT model contains a wealth of highly detailed parts. Please take a moment to read the instruction sheet to become familiar with the parts before beginning assembly.

Be sure to test the fit of all parts before gluing.

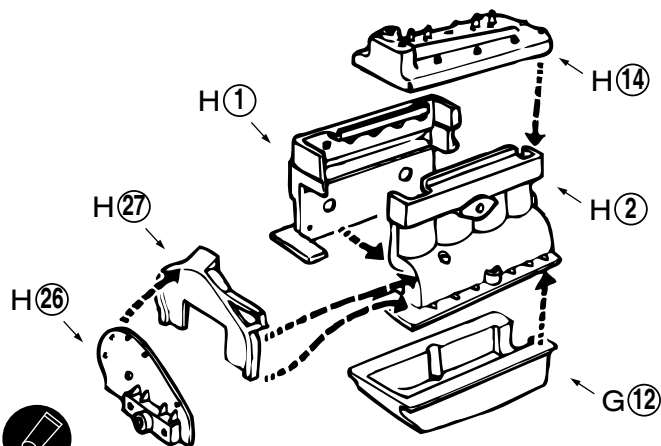
Remove the plating from the 'chromed' parts in the areas where glue will be applied.

Note and follow instruction icons shown below.

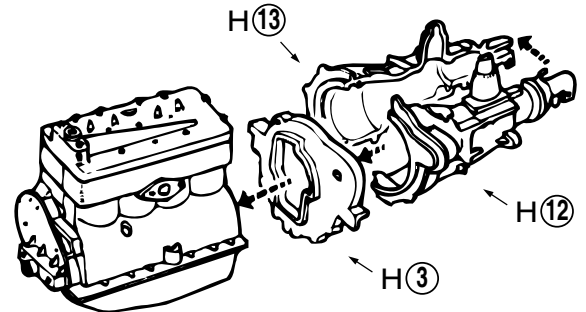
	<p>Cement Coller Kleben Pegar Incollare Colar Kleven</p>		<p>DO NOT Cement Ne pas coller Nicht Kleben No pegar Non collare Nao colar niet kleven</p>		<p>Optional Choix Auswahlmöglichkeit Eleccion Scelta Opcao Keuze</p>		<p>Cut away Couper Scheiden Cortar Tagliare Cortar Sniden</p>		<p>Repeat operation Rzřpřter l'opřzration Vorgang wiederholen Repitir la operacion Ripetere Repitir a operacao Herhalen</p>
--	--	--	--	--	--	--	---	--	---

SUGGESTED PAINTING GUIDE

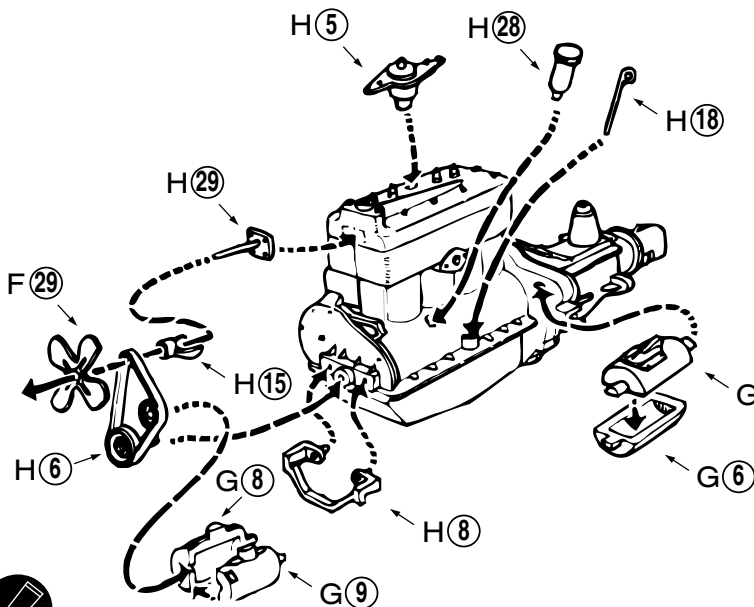
- Engine GLOSS OLIVE GREEN
- Fenders, brakes, chassis, suspension, rear axle GLOSS BLACK
- Exhaust system, tailpipe, muffler STEEL or FLAT SILVER
- Interior FLAT TAN or FLAT GRAY
- Body PAINT TO MATCH BOX TOP OR CONSULT FORD MODEL 'A' COLOR REFERENCE GUIDES
- Dash (MATCH BODY COLOR)
- Wheels BLACK, RED or STRAW BEIGE



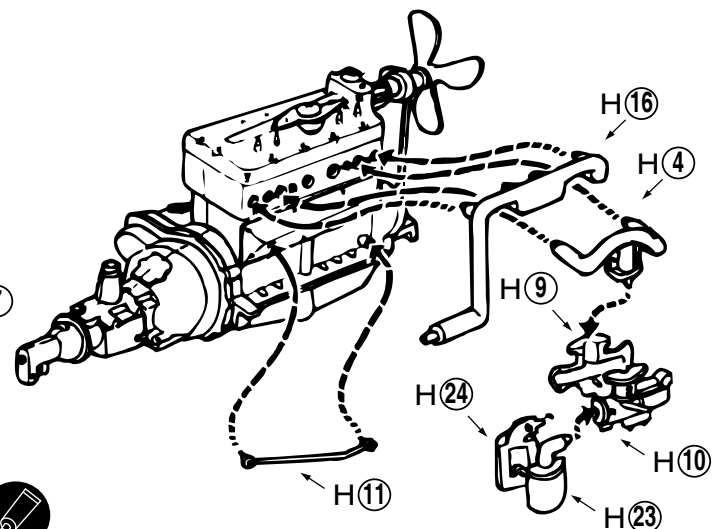
1 Cement engine block H(1/2) together. Cement additional parts in place to complete assembly.



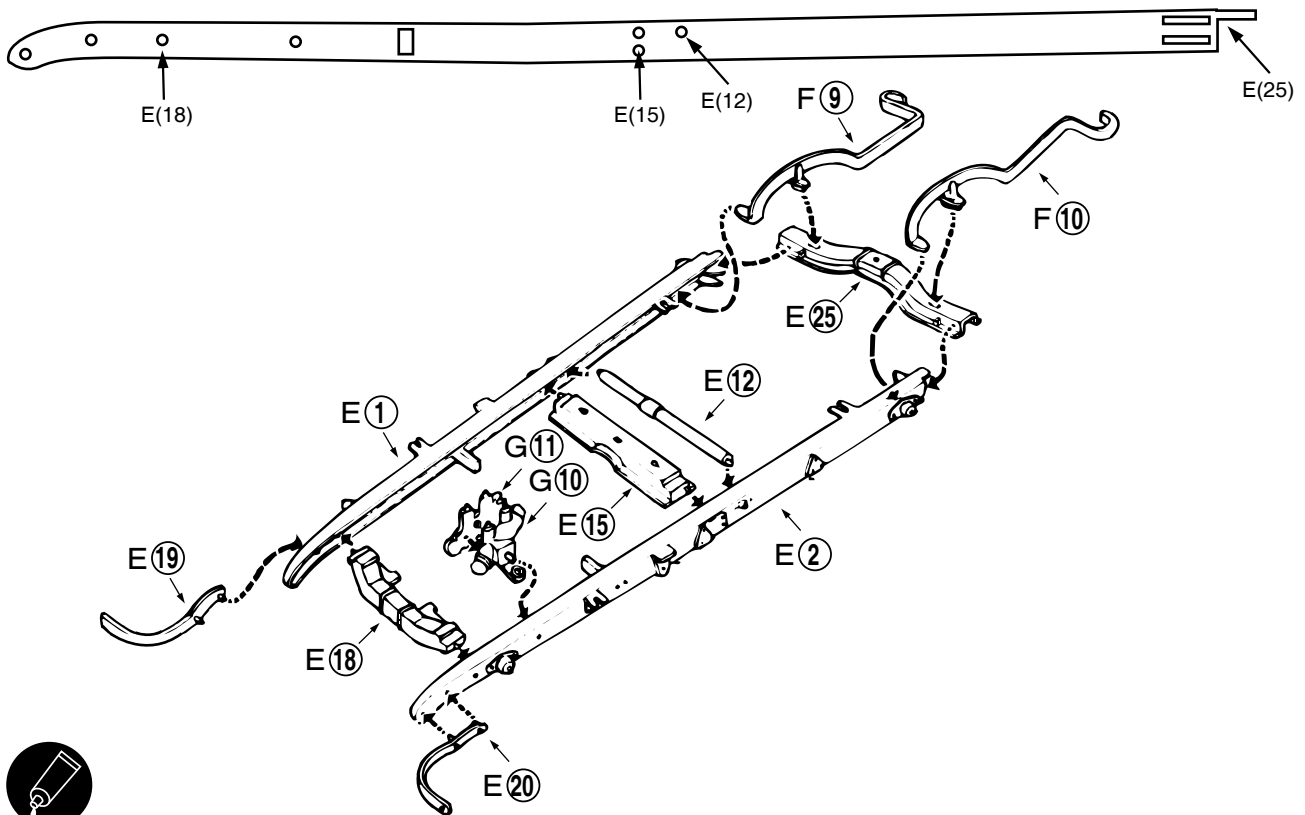
2 Cement transmission H(3/12/13) together, then to the engine.



3 Cement shaft H(29) and bracket H(8) to the engine. Place H(15) over H(29) and cement. Place fan belt and pulley H(6) over shaft H(29) and cement to engine. Cement fan F(29) to the shoulder of H(29). Cement all other parts in place as shown to complete assembly.

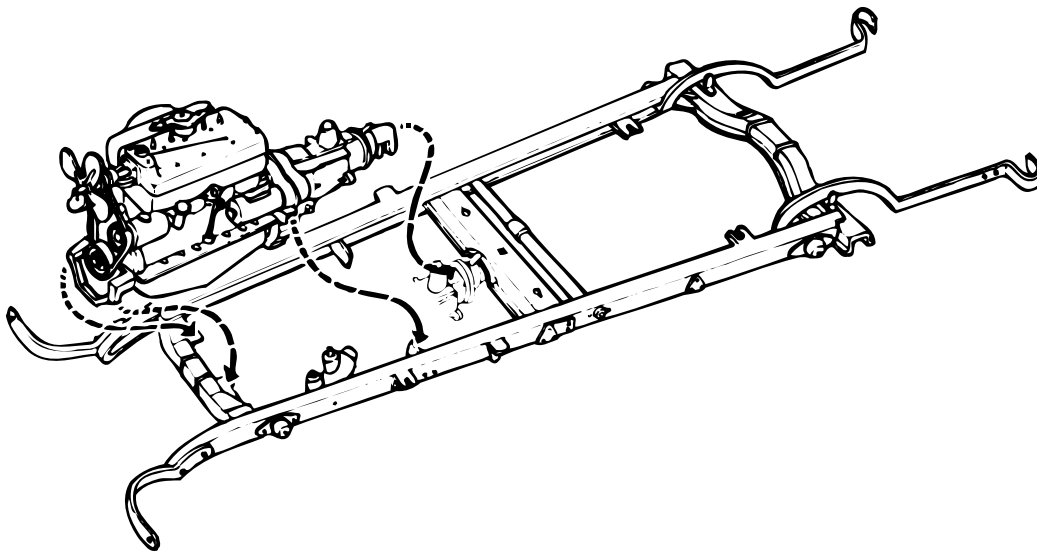


4 Cement carburetor H(9/10/23/24) together, then cement to manifold H(4). When dry, cement to engine. Cement exhaust manifold H(16) and bracket H(11) to engine.



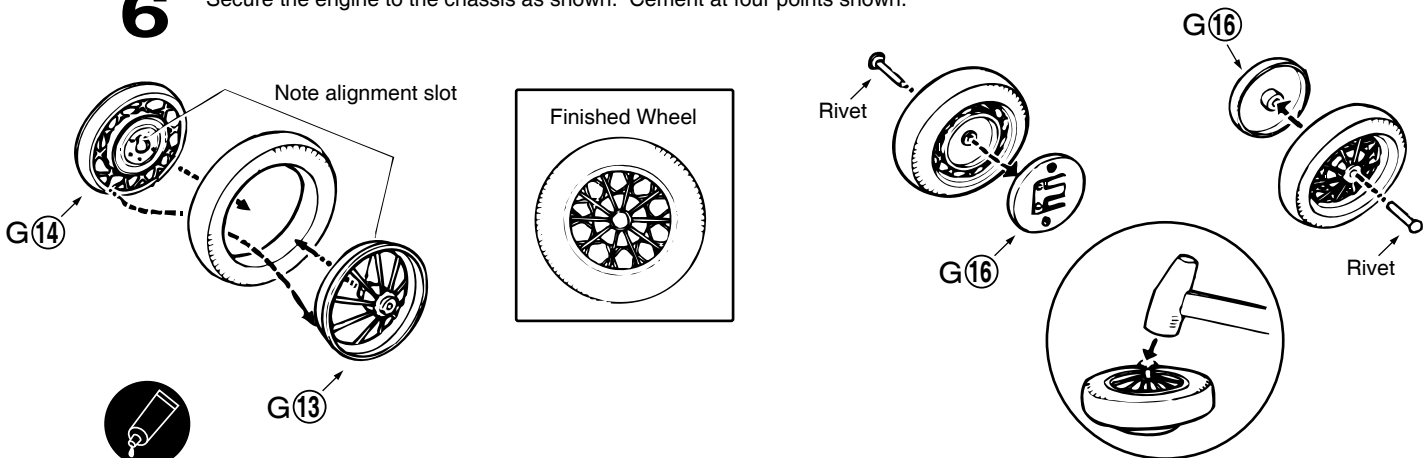
5

Assemble the chassis by cementing all parts indicated to E(2) except F(9/10). Cement E(1) to other parts, when dry attach F(9/10). Note diagram showing appropriate locating holes on parts E(1/2).



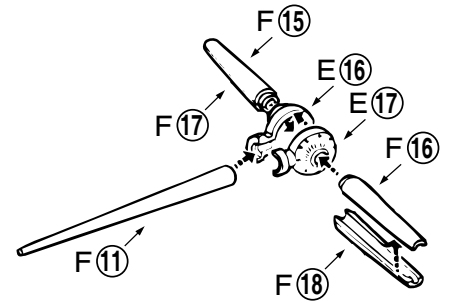
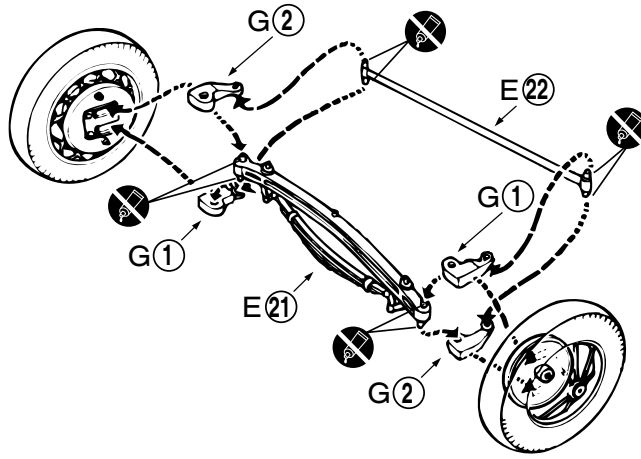
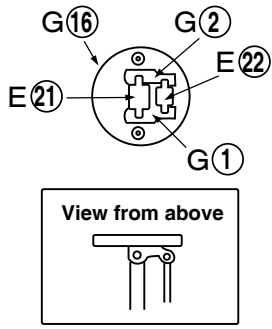
6

Secure the engine to the chassis as shown. Cement at four points shown.



7

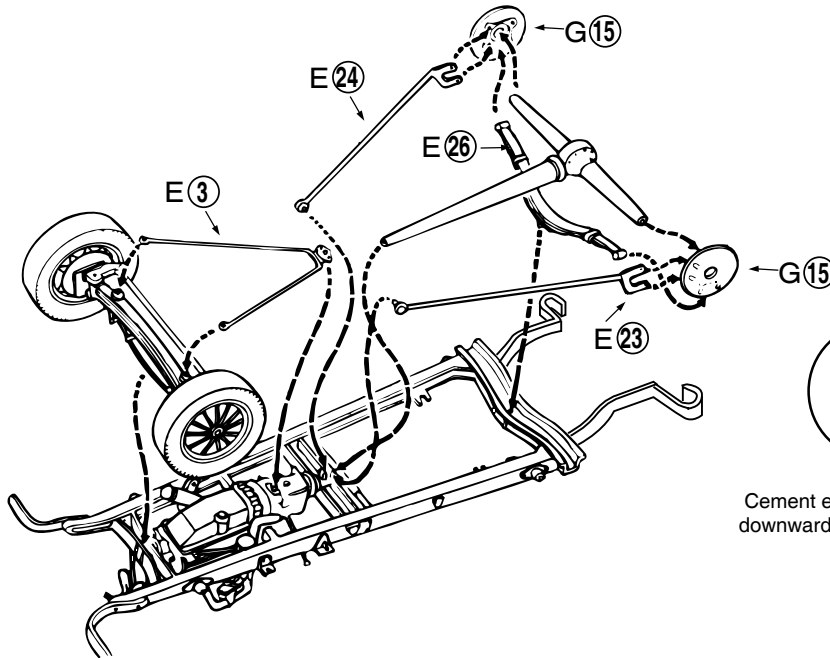
Assemble five wheels by cementing part G(13) to G(14), trapping the tire between. Assemble two front wheels by placing rivet through hub, then gently tapping the rivet into part G(16).



8 Cement parts G(1/2) to one wheel, trapping the pins of parts E(21) and E(22) in location holes. Do not allow cement to touch pins. Allow one wheel assembly to dry, then repeat with the other wheel.



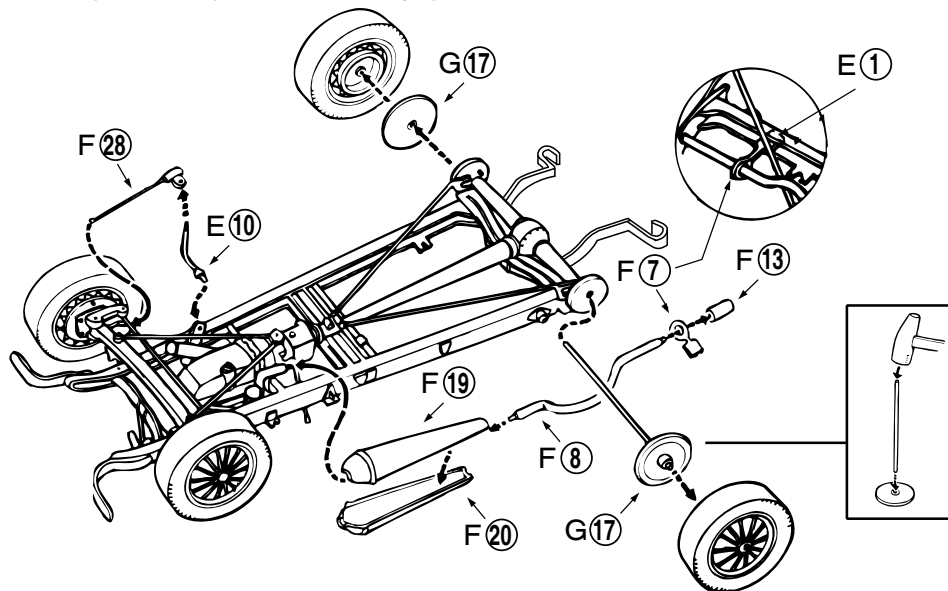
9 Cement the differential and drive shaft assembly together as shown.



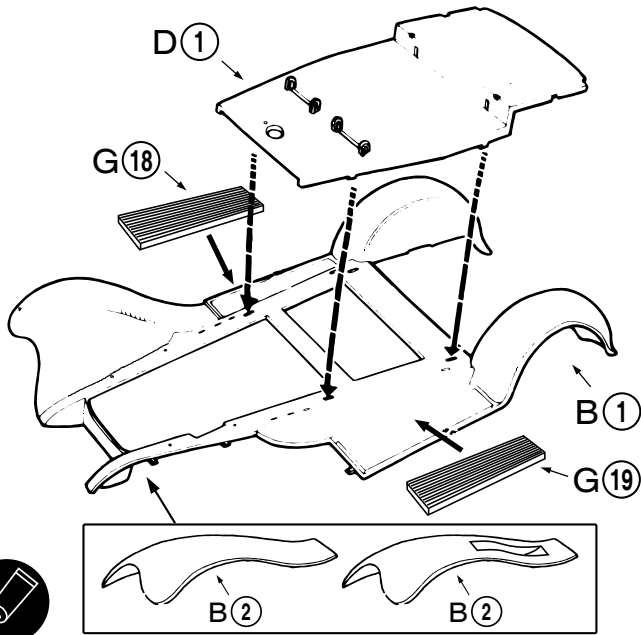
Cement end of part E(26) into downward facing slots on parts G(15).



10 Cement the front wheel assembly to the chassis and position in place with part E(3). Place G(15) on each end of differential assembly and position by cementing E(26) into the slots as shown. Cement parts E(23/24) to parts G(15) and assembled chassis. Check alignment of all parts as cement is drying.

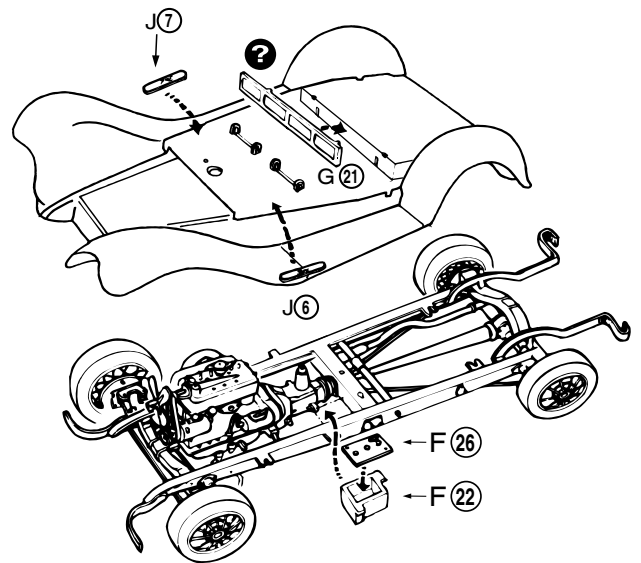


11 Cement muffler F(19/20) together, then to exhaust manifold. Before cement sets, slide bracket F(7) over exhaust pipe F(8) and cement exhaust pipe to muffler and tailpipe F(13). Align and cement bracket F(7) to frame E(1). Cement E(10) to G(10) and F(28). Cement part F(28) to side of chassis. Gently tap axle into one part G(17), slide through differential and gently tap second part G(17) to axle. Cement assembled rear wheels to parts G(17).



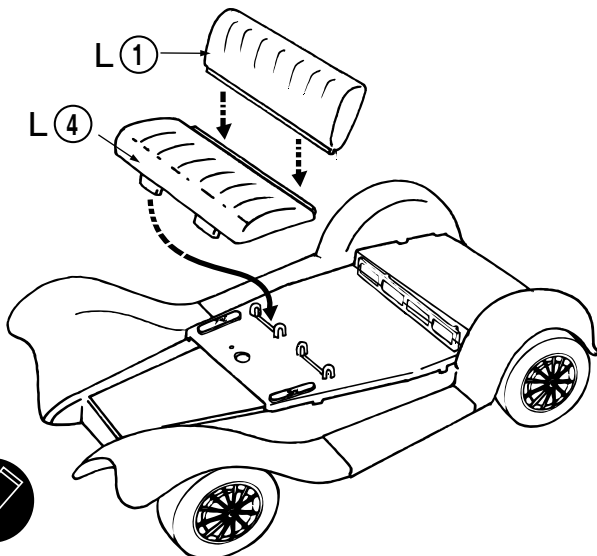
12

Cement floorboard D(1) to B (1). Cement left fender B(2) in place. Note two versions are included, with or without a cutout for the spare wheel. Refer to step 31. Attach running boards G(18/19).



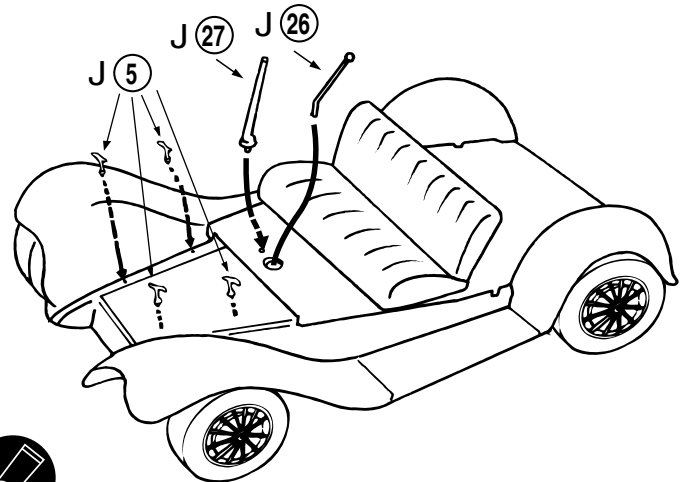
13

Cement battery parts F(22/26) together and glue to frame in position shown. Cement fenders and floorboard assembly to frame. Cement engine assembly in position, connecting to driveshaft. Glue exhausts into position.



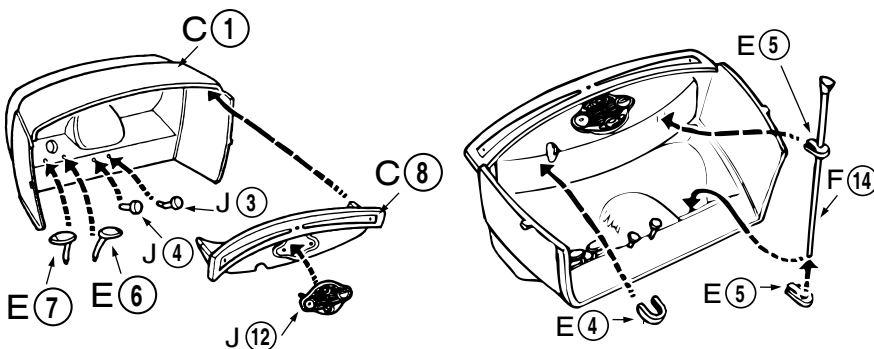
14

Assemble seat back L (1) to seat L (4), aligning tabs with slots in floorboard.



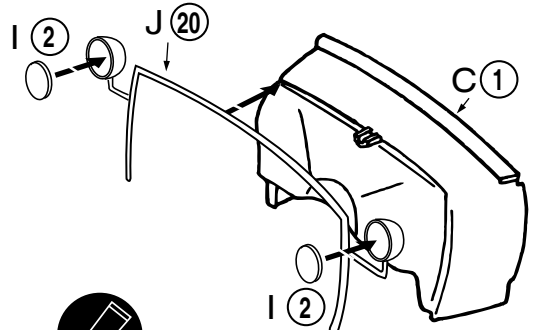
15

Attach parts (26/27) as shown. Note shift knob J (26) inserts into hole on top of transmission housing.



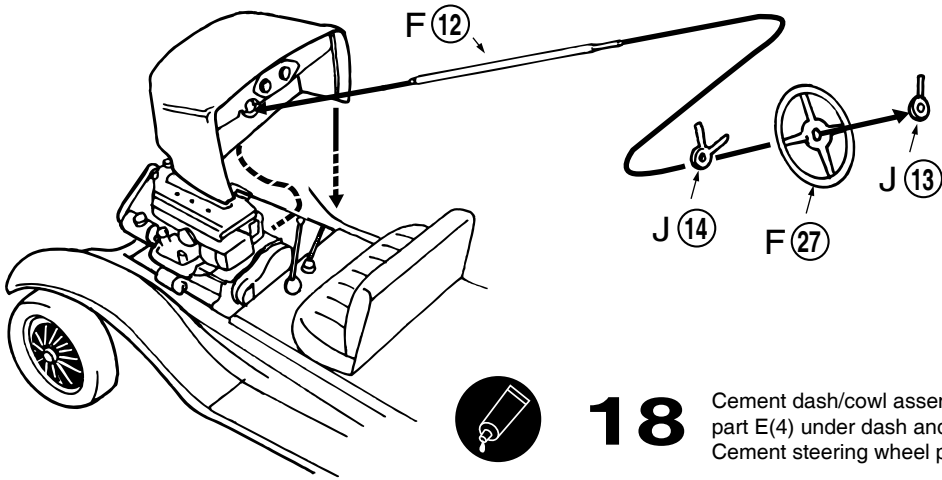
16

Cement all controls in place as shown. Slide E(5) over F(14). Cement E(5) to dash and F(14) into hole in floor. Cement E(4) under dash.



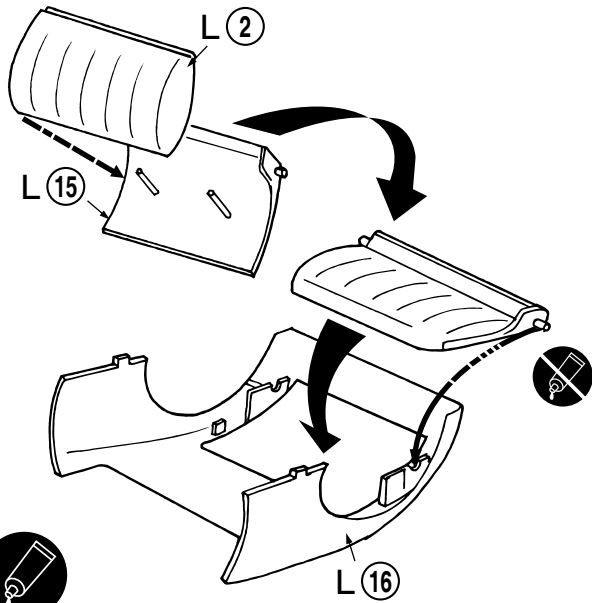
17

Carefully cement lenses I(2) to trim J(20), then attach to dash C(1).

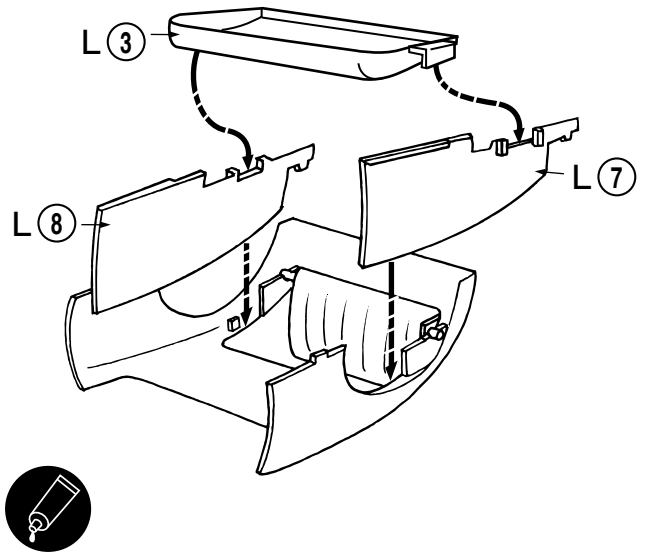


18

Cement dash/cowl assembly to chassis. Thread steering shaft F(12) through part E(4) under dash and connect to steering linkage on chassis. Cement steering wheel parts as shown and cement to steering shaft.

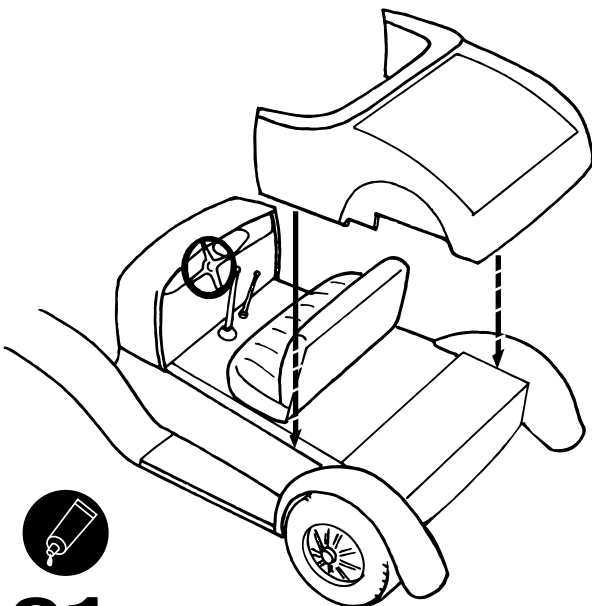


19 Assemble seat L (15) and L (2), then insert into body shell L (16). Do not glue.



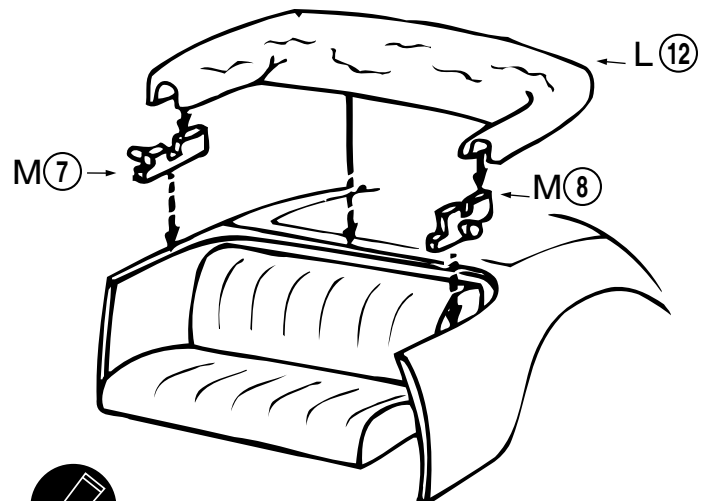
20

Cement sides L (7) and L (8) to body shell. Do not apply glue to hinge points. Attach seat bottom L (3).





21

Cement body shell to assembled chassis.

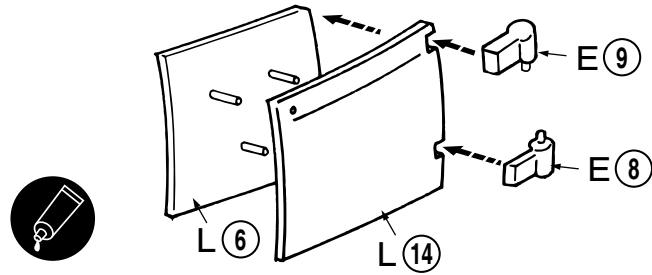


22

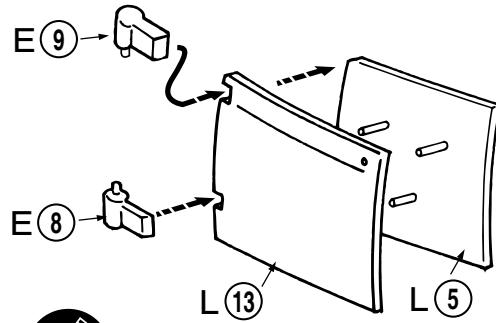
Attach hinges M(7/8) to body. Cement top L(12) to body.

2X 1/16" (2mm)   End view

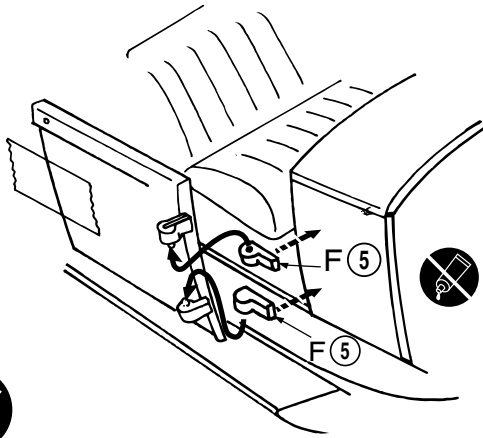
Steps 32/33 Shorten one end of hinge pins to dimensions shown. Glue into position as shown. (Part is shown upside down).



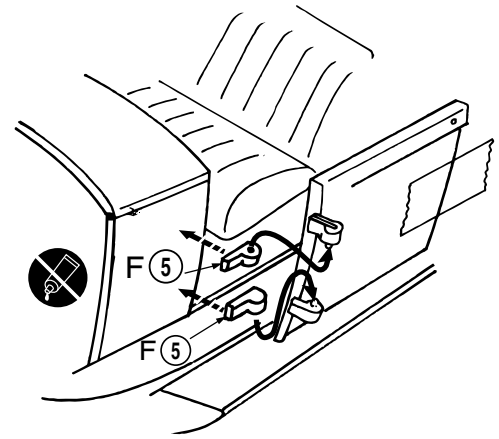
23 Cement door halves L (6,14) together. Cement hinge pin to hinge E (9), then cement hinges E (8,9) to door.



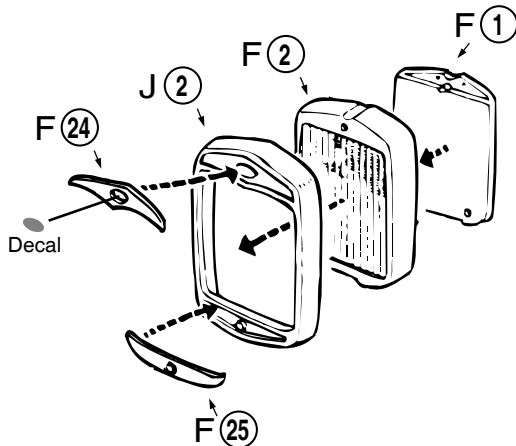
24 Cement door halves L (5,13) together. Cement hinge pin to hinge E (9), then cement hinges E (8,9) to door.



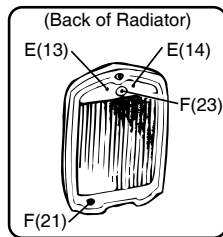
25 Fit (do not cement) hinges F5 to door hinges. Hold door shut and in place with tape, then carefully cement hinges F (5) to body.



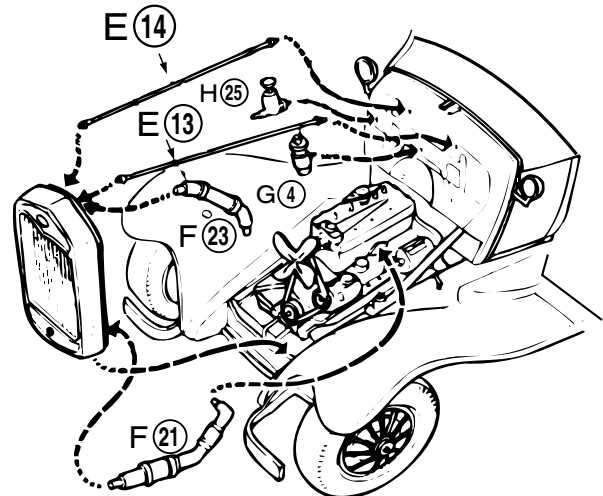
26 Fit (do not cement) hinges F5 to door hinges. Hold door shut and in place with tape, then carefully cement hinges F (5) to body.

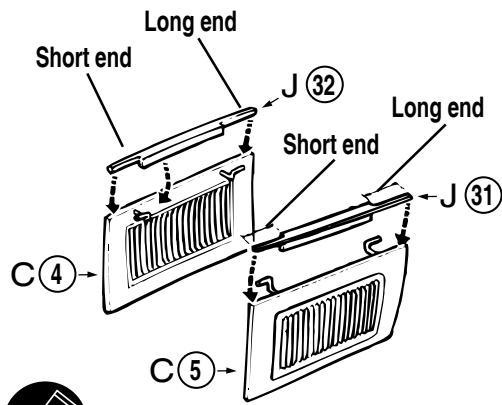


27 Assemble radiator as shown.



28 Cement water hoses F(21/23) to engine. As cement is setting, attach radiator to chassis and cement hoses to radiator. Position radiator by cementing tie rods E(13/14) in place. Refer to insert drawing showing connection points on radiator. Cement parts H(25) and G(4) to firewall.

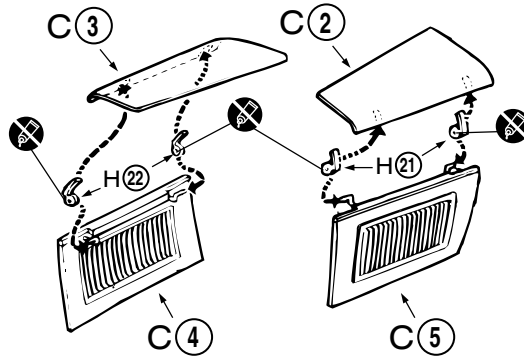




29

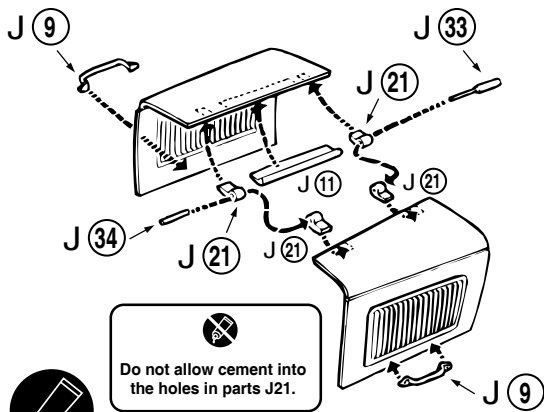
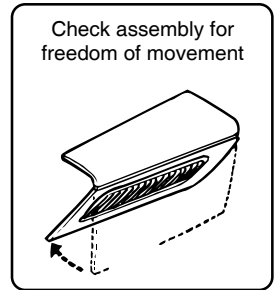
Hood/Engine Cover

Cement J(31) to C(5) and J(32) to C(4). Note alignment.



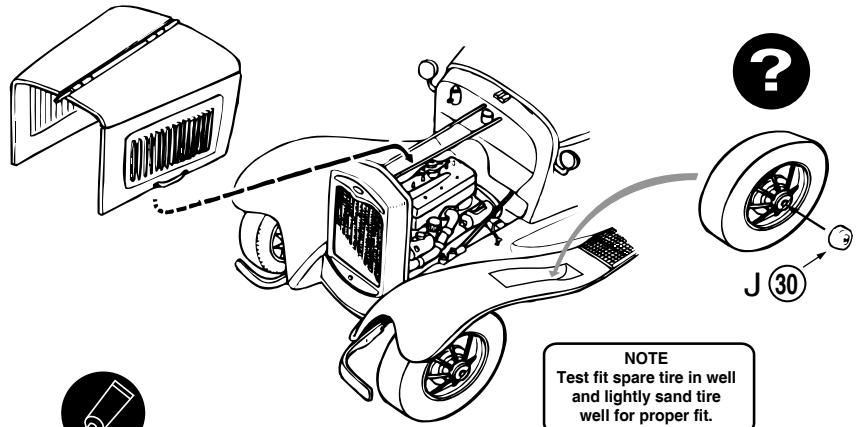
30

Assemble Right and Left sides of hood as shown. Do not allow cement to enter the holes in hinges H(21/22).



31

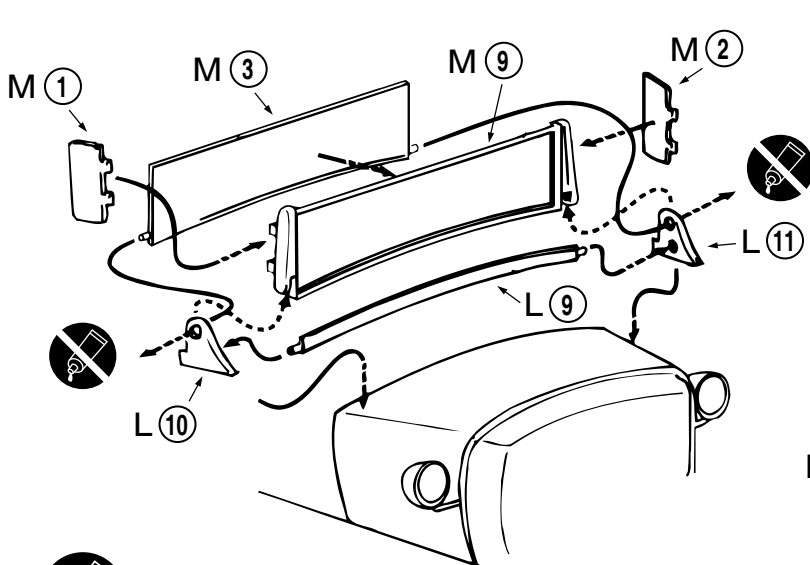
Cement J(11) to C(3) and hinges J(21) C(2/3). Place (do not cement) J(33) and J(34) into the hinge holes. Cement handles J(9) in place.



32

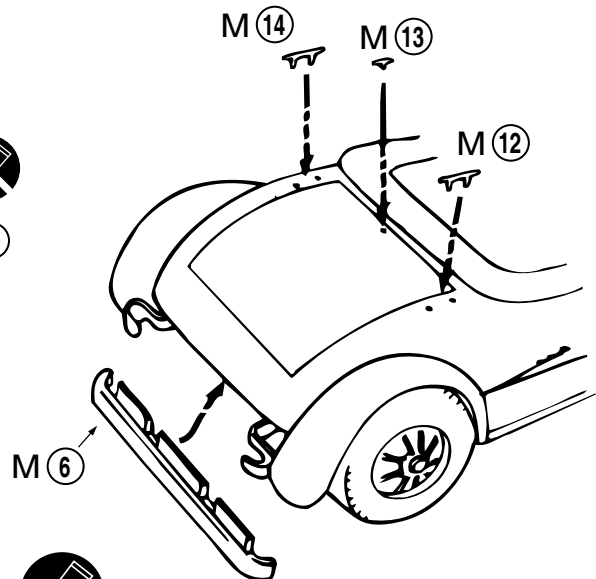
Carefully cement hinge pins on engine hood to body. When cement is dry, check hood for freedom of movement. Cement hub cap J(30) in place on spare tire. Place or glue optional spare tire to fender well.

NOTE
Test fit spare tire in well and lightly sand tire well for proper fit.



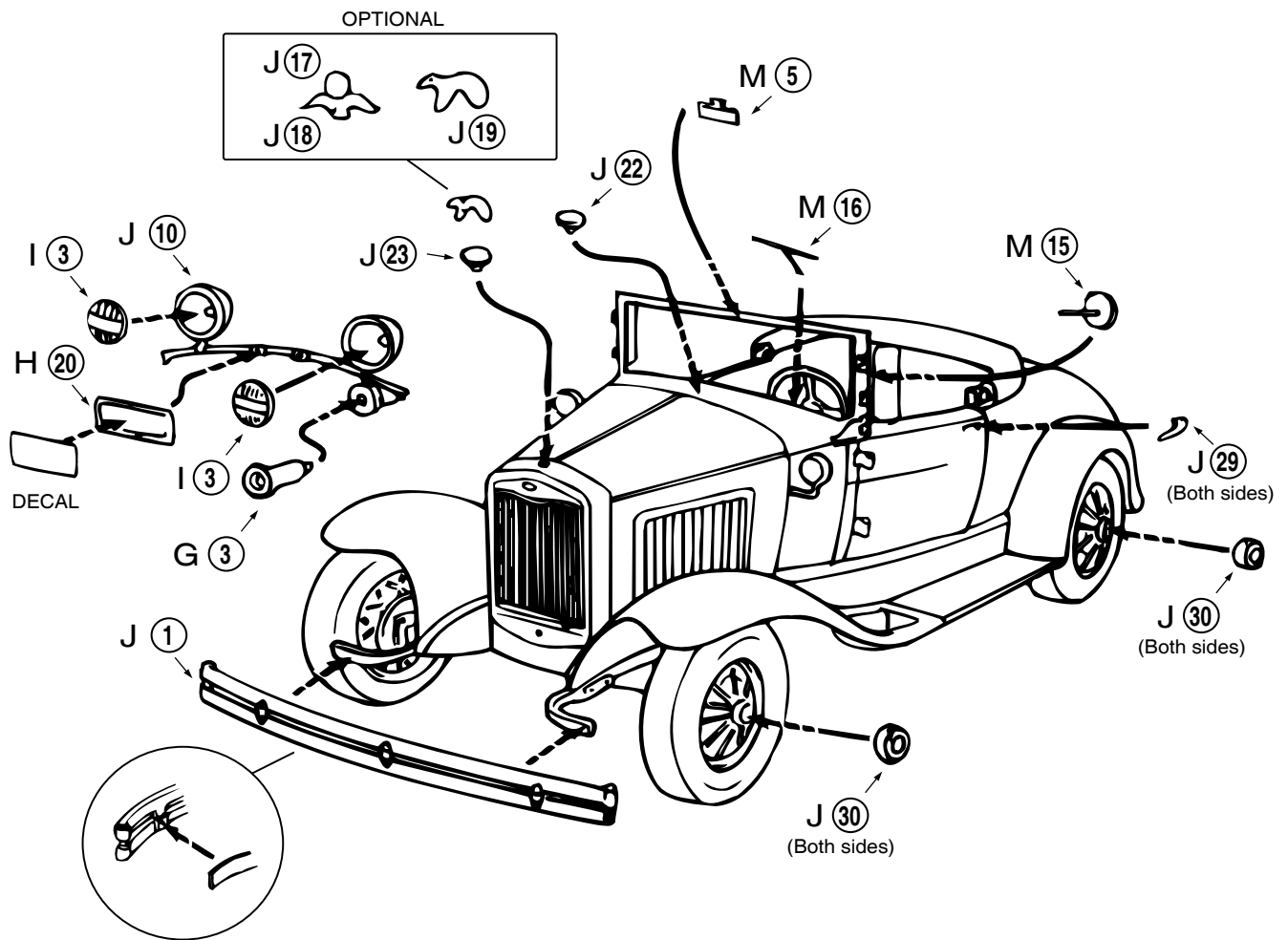
33

Slide (do not cement) pegs on windshield M(3) into upper holes of parts L(10/11). Slide these parts into slots at bottom of frame M(9) (note dashed lines). Carefully cement windshield to frame. Insert L(9) into lower holes of parts L(10/11). Cement parts L(10/11) to body. Attach side screens M(1/2).



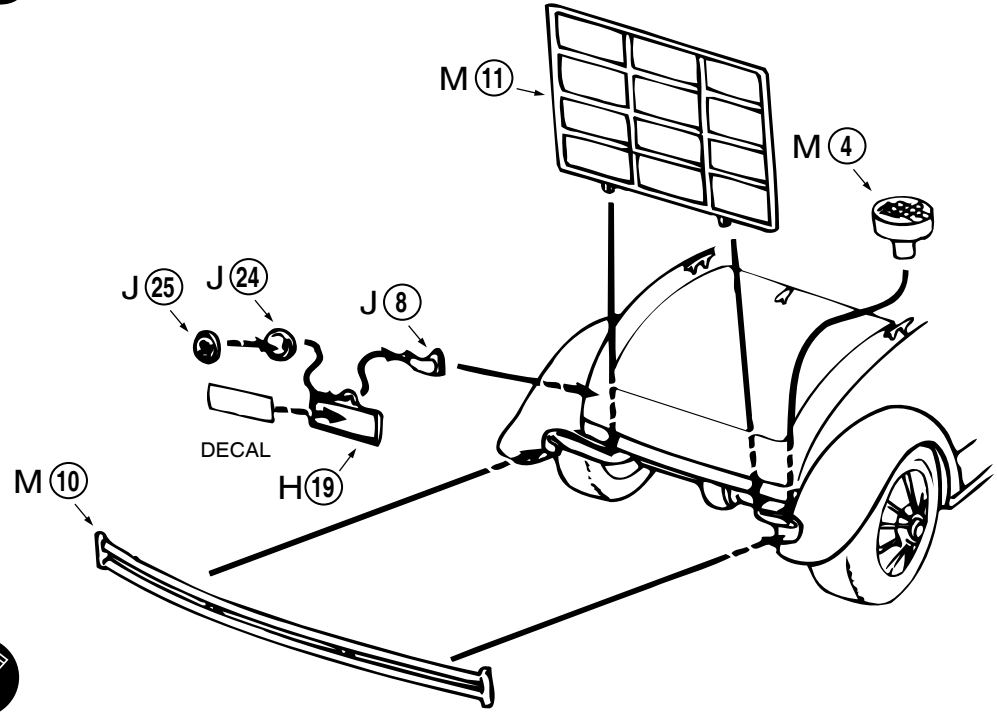
34

Cement M(12/13/14) to body. Cement trim M(6) to body.



35

Cement bumper and accessories to front end and hub caps J(30) and handles J(29) to body, left and right sides. Cement accessories to windshield.



36

Cement bumper M(10) to brackets. Attach rack M(11) and step M(4) to bumper mounts. Assemble J(25/24/8) and H(19) and cement to body.

Your Minicraft model includes high-quality waterslide decals. These decals adhere best to a glossy surface; and it is recommended that you apply a clear gloss coat over your painted model.

Use a sharp scissors or knife to cut individual decals from the carrier sheet. Do not cut into the clear film surrounding the individual decals.

* It is recommended that you apply one decal at a time.

* Place the decal section in warm water, when first inserted in the water your decal will curl, after approximately ten seconds the decal will uncurl. Remove from water and lay on a paper towel. After approximately 10 - 20 seconds the decal will slide freely from the backing paper. Use a small brush to help slide the decal from the backing paper and into position on the model. Carefully blot excess water from the decal, using care not to move the decal or tear it.

* If you choose to use a setting solution, apply a thin coat over the decal following the manufacturer's instruction.

* Allow the decal to dry overnight. Wash any adhesive residue off the model with a small amount of clean water and dry thoroughly.

* Apply clear gloss, matte or flat coat to seal decals following the instructions from the manufacturer.



Legends in the making™

Visit our Website-
www.minicraftmodels.com

Minicraft Models
1501 Commerce Drive
Elgin, IL 60123

Phone: 847-429-9676