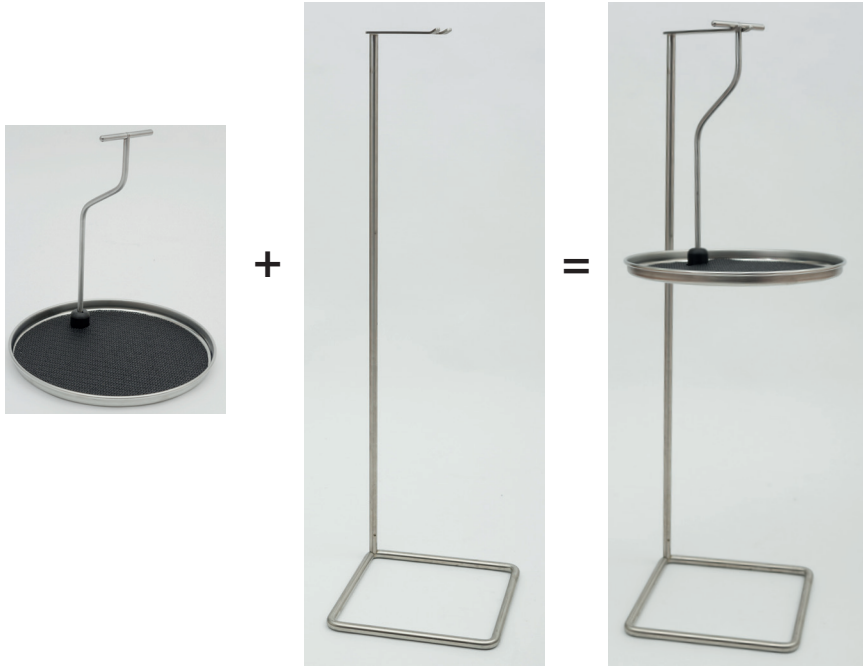


Assembly and operating instructions Hanging tray and stainless steel stand

RONDO & REMO



Shown is the tray RONDO and the tray stand REMO

CrazyChair® is the internationally registered trademark of Pimiento OHG, for exclusive, high-quality hanging chairs, hammocks, stainless steel stands and matching accessories.

The complete range of services, such as idea, design, development, production, marketing and sales is carried out at several locations in Germany.



Pimiento OHG - Crazy Chair • Germany

MAIL info@crazychair.de • WEB www.crazychair.de

GA20210508-E-RONDOREMO

RONDO hanging tray

in use as a serving tray

Scope of delivery only RONDO suspended tray:

Please check for completeness.

A 1 round stainless steel tray

B 1 curved support rod

C 2 handle halves with internal thread

D 1 black adapter already mounted on tray

E 1 Anti-slip support

Installation procedure RONDO:

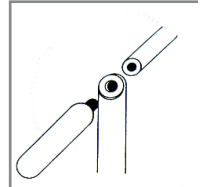
The tray is very easy and quick to assemble. It is easy to clean with water and detergent.

Step 1

Place the black non-slip mat (E) on the tray, with the hole recess placed over the black pre-mounted adapter.

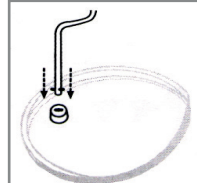
Step 2

Both handles through the hole drilling of the handle plug and tighten.



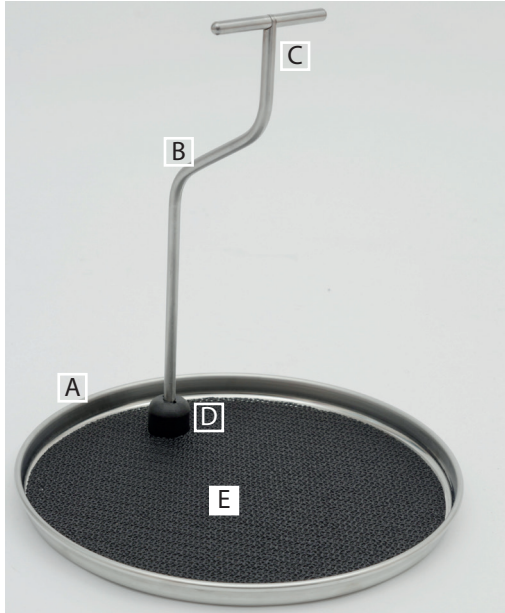
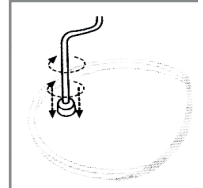
Step 3

Insert the handle into the opening of the black tray adapter and slightly downwards press (spring resistance).



Step 4

Handle clockwise by 90° turn and snap into place pull up slightly. The geboinlined carrying handle is located now centered over the tray.



RONDO is a very special tray.

The suspended tray has a specially curved carrying handle that always keeps the shelf surface in balance. So that glasses, cups and co. do not slip, they stand on a net-like non-slip mat. RONDO is the perfect helper in the house, on the way to the balcony or terrace when you want to serve something. The tray is made of stainless steel, has a diameter of approx. 34 cm and can carry a load of up to 5 kg.



RONDO hanging tray

when used as a shelf on the ONE hanging chair

Scope of delivery in addition to RONDO:

1 + 2 = black belt strap for hanging on the hanging chair, with sewn-in clip buckles.

RONDO on the hanging chair.

Imagine you are sitting in the Crazy Chair hanging chair ONE and would like to enjoy your drink or put down plates. This is the moment for RONDO, the perfect helper.

And there you go:

The short part of the black belt loop with clip is put over the long crossbar of the hanging chair (1).



For the tray we use the longer strap with clip (2). The two parts of the webbing can be easily joined or separated with the matching sewn clips. This leaves the short belt loop on the hanging chair.



When sitting in the hanging chair, the tray with the carrying handle is only hung in the loop of the belt strap (3). Ready. REMO now swings safely next to the hanging chair and the drink is within reach.



RONDO hanging tray:

- > serving and carrying with the tray works like magic
- > tray is so well balanced that glasses, dishes do not tip
- > with full tray, carrying with one hand, finally walking safely up stairs
- > carrying only one hand, opening doors with the other hand
- > non-slip, net-like, removable non-slip support
- > suitable for loads up to 5 kg
- > is suspended from the hanging chair with webbing as a floating table
- > remains in balance and floats at an ideal height
- > ideal for apartment, kitchen, terrace, balcony, motor home
- > weight 1.300g, diameter 34cm
- > height incl. carrying handle 34cm
- > material tray and carrying handle made of stainless steel

REMO tray rack

Scope of delivery REMO (supplement):

- 1 square stainless steel foot part approx. 30x30cm
- 1 stainless steel support bar, height 100 cm, with welded handle
- 1 small grub screw, to lock the rod to the foot part
- 1 Allen key for the grub screw

Assembly of the REMO stand:

Put the stainless steel rod on the foot part. The handle must be diagonally over the foot part. With the grub screw and hexagon head, the footrest with the rod is fixed against slipping out.

Perfect combination: RONDO hanging tray + stand REMO.

The special stainless steel stand has been designed to support the tray exactly developed. With RONDO + REMO you have a mobile, beautifully shaped side table and serving tray unit suitable for everyday use. Ideal for use in the living room, balcony, terrace, garden, pool, etc. The tray is simply hooked into the holder of the stand and balances itself. Design and production takes place in Germany.



Clean stainless steel with non-abrasive cleaning agents or wipe with a soft, clean cloth. Water with detergent will remove almost any dirt. For intensive care we recommend „Stainless Steel Polish“ from Starbrite. RONDO + REMO can be loaded up to max. 5kg. Glasses with long stems e.g. wine, sparkling wine, champagne or tall glasses e.g. wheat beer, carry carefully with the tray. This also applies to tall bottles. Improper handling could cause the transported goods to fall over. Possible damages are no reason for complaint.

REMO + RONDO = a perfect couple!



The REMO stainless steel tray stand with RONDO suspended tray can be used in a variety of ways. Whether in the garden, on the terrace, by the pool or in the apartment. Everywhere it is the practical butler. The ideal small side table, which can also be used directly as a serving tray. Perhaps your next gift idea.