



# **H&H Medical Corporation**

## **Product Instructions for Use**

Date Last Updated:  
July 7, 2017

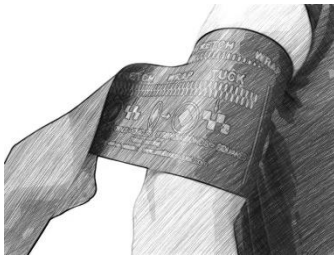
H&H Medical Corporation  
328 McLaws Circle  
Williamsburg, VA 23185 USA  
(800) 326-5708 [info@gohandh.com](mailto:info@gohandh.com)

# **Tourniquets**



# HOW TO USE THE SWAT-T™ TOURNIQUET

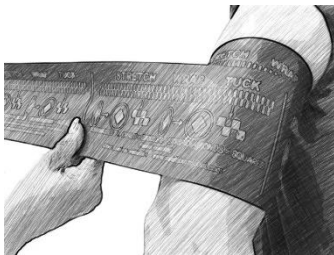
Open the packaging to the tourniquet by either tearing the package open at the tear notches or by grabbing the ends of the package and twisting the product, creating a tear in the middle. Remove the product from the package and set the tourniquet application band aside.



Wrap the SWAT-T above the wound area (or over the wound area if being used as a compression dressing). Wrap once around the extremity to ensure the tourniquet is secure against the skin.



Pull the SWAT-T tight against the extremity until the graphic diamonds on the tourniquet become squares. This will show that enough force is being applied to stop severe bleeding.



Continue to wrap the SWAT-T around the extremity, maintaining the compression by continuing to pull the tourniquet while wrapping.



Once near the end of the tourniquet, hold the last wrap up to create a loop and tuck the end of the tourniquet under this loop. The SWAT-T will grip onto itself and remain in place. **Frequently check any style tourniquet for continued occlusion as loosening can occur after application.**

***THIS PRODUCT IS SINGLE USE ONLY. DO NOT REUSE.***

*This product is a medical device that may require specific training regarding proper use. Please follow any local guidance or governing authority regarding the use of this device.*



# HOW TO USE THE SWAT-T™ TOURNIQUET ONE-HANDED

The SWAT-T can be used one-handed. Open the packaging to the tourniquet by tearing the package open at the tear notches using your teeth. Remove the product from the package and set the tourniquet application band aside.



Take one end of the SWAT-T and hold it between your teeth. You will use your teeth as the second “hand” to grab and hold the tourniquet until it is secure. With your uninjured hand, loop the SWAT-T around the injured limb. Wrap the SWAT-T above the wound area (or over the wound area if being used as a compression dressing).



Continue to hold the end of the SWAT-T between your teeth and wrap once around the extremity to ensure the tourniquet is secure against the skin.



Continue holding the end of the SWAT-T between your teeth and pull the SWAT-T tight against the extremity until the graphic diamonds on the tourniquet become squares. This will show that enough force is being applied to stop severe bleeding.



Continue to wrap the SWAT-T around the extremity, maintaining the compression by continuing to pull the tourniquet while wrapping. Once the tourniquet is set and pressure is being applied, you can release the end of the SWAT-T from your mouth.



Once near the end of the tourniquet, hold the last wrap up to create a loop and tuck the end of the tourniquet under this loop. The SWAT-T will grip onto itself and remain in place. **Frequently check any style tourniquet for continued occlusion as loosening can occur after application.**

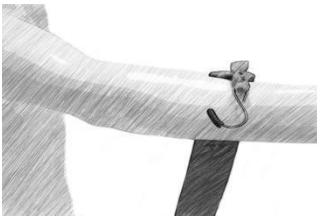
***THIS PRODUCT IS SINGLE USE ONLY. DO NOT REUSE.***

*This product is a medical device that may require specific training regarding proper use. Please follow any local guidance or governing authority regarding the use of this device.*



# HOW TO USE THE H&H TK-4 COMPRESSION STRAP TOURNIQUET

Tear open the package by using one of the indicated tear notches and remove the product. Grab the product by one of the S-hooks. Then follow these instructions for application.



Place the TK-4 by the hook end over the injured limb above the wound area. Lay the strap over the limb with the hook to the outside of the limb.



Wrap the elastic strap under the limb and hook it through the S-hook on the limb. Make sure the elastic is secure in the hook. Begin pulling on the strap and keep a constant tension on the elastic.



Holding the TK-4 against the limb, pull and tighten the strap down to secure the TK-4 and begin compression against the limb. Hold tight to the strap and begin winding it around the limb, continuing to pull the strap tight as you wrap. **DO NOT let go of the strap while winding; this will result in the hook and strap unraveling and may cause injury.**



Once the tourniquet has been wrapped around the limb, tuck the remaining S-hook under the elastic wrap to secure the tourniquet. If you need to adjust the tourniquet, pull out the S-hook and unwrap the strap.

**Frequently check any style tourniquet for continued occlusion as loosening can occur after application.**

***THIS PRODUCT IS SINGLE USE ONLY. DO NOT REUSE.***

This product is a medical device that may require specific training regarding proper use. Please follow any local guidance or governing authority regarding the use of this device.



# HOW TO USE THE H&H TK-4L COMPRESSION STRAP TOURNIQUET

Tear open the package by using one of the indicated tear notches and remove the product. Grab the product by the large red hook. Then follow these instructions for application.



Place the TK-4L by the large red hook end over the injured limb above the wound area. Lay the strap over the limb with the hook to the outside of the limb. Wrap the elastic strap under the limb and feed it through the red hook. Make sure the elastic is secure in the hook. Begin pulling on the strap and keep a constant tension on the elastic.



Pull and tighten the strap down to secure the TK-4L and begin compression against the limb. Hold tight to the strap and begin winding it around the limb, continuing to pull the strap tight as you wrap. **DO NOT let go of the strap while winding; this will result in the hook and strap unraveling and may cause injury.**



Once the tourniquet has been wrapped around the limb, tuck the remaining S-hook under the elastic wrap to secure the tourniquet. If you need to adjust the tourniquet, pull out the S-hook and unwrap the strap. **Frequently check any style tourniquet for continued occlusion as loosening can occur after application.**

***THIS PRODUCT IS SINGLE USE ONLY. DO NOT REUSE.***

This product is a medical device that may require specific training regarding proper use. Please follow any local guidance or governing authority regarding the use of this device.

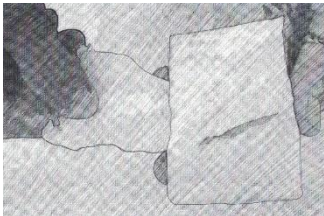
# **Gauze and Bandages**





# HOW TO USE THE H&H COMPRESSED GAUZE TO PACK A WOUND

The H&H Compressed Gauze can be used to pack a wound and slow severe hemorrhaging. **Wear protective gear such as gloves before using this product as you will come in contact with blood and/or bodily fluids.** To start, tear open the package by using one of the tear notches on the package and remove the product. Then follow these instructions for application.



Find the end of the gauze roll by either bending the roll in the middle or pulling on the top. Take the end and pull about 6-8" of gauze from the roll. Hold the end in one hand and the rest of the roll in your other hand.



Using one or two fingers, push the end of the gauze roll deep into the wound. Push the end of the gauze all the way down into the wound until you reach the end of the wound. Bring your fingers out of the wound and pull more of the gauze from the roll.



Continue pushing gauze into the wound, filling the entire wound cavity with gauze. Use your fingers to push the gauze firmly down into the wound to apply pressure. Once the gauze is completely packed into the wound, place the remainder of the gauze roll (if any) on top of the wound and apply firm pressure over the wound.



Hold this pressure for **three minutes**. Do not release pressure to check the wound during this time. After three minutes, apply a compression bandage or securing bandage to keep the gauze in place.

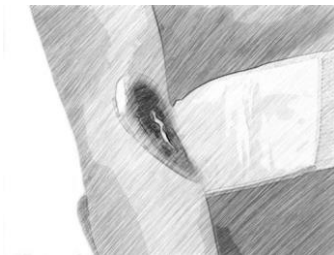
***THIS PRODUCT IS SINGLE USE ONLY. DO NOT REUSE.***

*This product is a medical device that may require specific training regarding proper use. Please follow any local guidance or governing authority regarding the use of this device.*

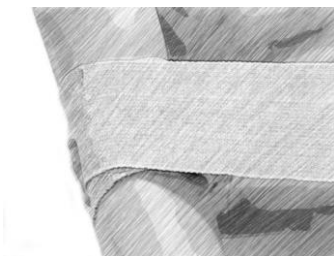


# HOW TO USE THE H&H MINI COMPRESSION BANDAGE

Tear open the package by using one of the indicated tear notches and remove the product. Grab the product by the elastic to keep the pad side sterile. Then follow these instructions for application.



Apply the bandage with the sterile pad down over the wound and the elastic wrap side up. Take the elastic wrap and pull it around the bandage, securing the short elastic end to the wrap.



Once the bandage is secure, begin wrapping the elastic around the wound, keeping tension on the elastic. This will add pressure around the wound and help reduce bleeding. Continue to wrap the elastic until you reach the end.



Once finished wrapping all of the elastic, secure the end to the wrap with the hook material to the wrap or use the barrette to secure the end to the wrap.

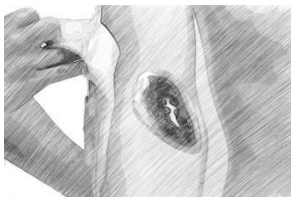
***THIS PRODUCT IS SINGLE USE ONLY. DO NOT REUSE.***

This product is a medical device that may require specific training regarding proper use. Please follow any local guidance or governing authority regarding the use of this device.



# HOW TO USE THE H&H THIN H COMPRESSION BANDAGE

Tear open the package by using one of the indicated tear notches and remove the product. Grab the product by the elastic to keep the pad side sterile. Then follow these instructions for application.



Apply the bandage with the sterile pad down over the wound and the H-Cleat side up above the wound. Center the H-Cleat over the wound area.



Take the elastic wrap and pull it around the bandage, securing the short elastic end to the wrap. This will hold the bandage in place and secure when you begin to apply pressure.



Pull the elastic wrap under the bandage, then tuck it under the H-Cleat and pull down. This will secure the elastic wrap and pull down. This will begin adding pressure over the wound.



Pull the elastic wrap under the bandage and wrap it around the other end of the H-Cleat. This will add more pressure over the wound and lock the wrap so that it will not unravel. Then begin wrapping the elastic around the entire bandage pad. Keep the elastic tight as you wrap to continue to apply pressure.



Continue wrapping the elastic around the bandage pad, keeping the wrap tight to add pressure over the wound. Once finished wrapping all of the elastic, secure the end to the wrap with the hook material to the wrap or use the barrette to secure the end to the wrap.

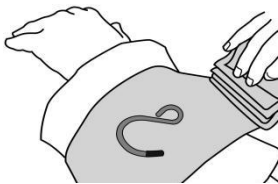
***THIS PRODUCT IS SINGLE USE ONLY. DO NOT REUSE.***

This product is a medical device that may require specific training regarding proper use. Please follow any local guidance or governing authority regarding the use of this device.

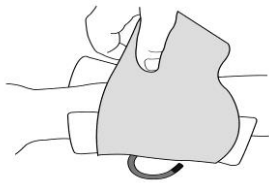


# HOW TO USE THE CINCH TIGHT BANDAGE

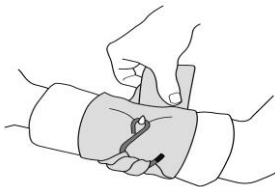
Tear open the package by using one of the indicated tear notches and remove the product. Grab the product by the elastic to keep the large pad side sterile. Then follow these instructions for application.



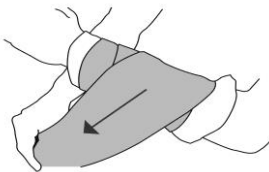
Apply the bandage with the large pad down over the wound and the hook side up above the wound. Center the hook over the wound area.



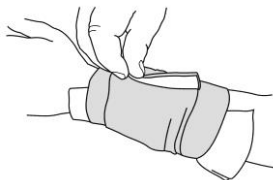
Take the elastic wrap and pull it around the bandage, securing the short elastic end to the wrap. This will hold the bandage in place and secure when you begin to apply pressure.



Pull the elastic wrap under the bandage, then tuck it under the hook and reverse the wrap. This will ensure the wrap is fully secured.



Begin wrapping the elastic around the bandage pad, keeping the wrap tight to add pressure over the wound.



Once finished wrapping all of the elastic, secure the end to the wrap with the hook material to the wrap.

***THIS PRODUCT IS SINGLE USE ONLY. DO NOT REUSE.***

This product is a medical device that may require specific training regarding proper use. Please follow any local guidance or governing authority regarding the use of this device.



# HOW TO USE THE H&H H-BANDAGE COMPRESSION DRESSING

Tear open the package by using one of the indicated tear notches and remove the product. Grab the product by the elastic to keep the large pad side sterile. Then follow these instructions for application.



Apply the bandage with the large pad down over the wound and the H-Cleat side up above the wound. Center the H-Cleat over the wound area.



Take the elastic wrap and pull it around the bandage, securing the short elastic end to the wrap. This will hold the bandage in place and secure when you begin to apply pressure.



Pull the elastic wrap under the bandage, then tuck it under the H-Cleat and pull down. This will secure the elastic wrap and pull down. This will begin adding pressure over the wound.



Pull the elastic wrap under the bandage and wrap it around the other end of the H-Cleat. This will add more pressure over the wound and lock the wrap so that it will not unravel. Then begin wrapping the elastic around the entire bandage pad. Keep the elastic tight as you wrap to continue to apply pressure.



Continue wrapping the elastic around the bandage pad, keeping the wrap tight to add pressure over the wound. Once finished wrapping all of the elastic, secure the end to the wrap with the hook material to the wrap or use the barrette to secure the end to the wrap.

***THIS PRODUCT IS SINGLE USE ONLY. DO NOT REUSE.***

This product is a medical device that may require specific training regarding proper use. Please follow any local guidance or governing authority regarding the use of this device.

# **Chest Dressings and Pneumothorax Devices**

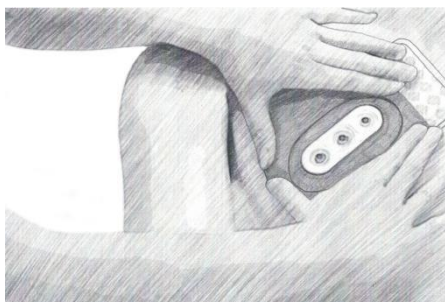


# HOW TO USE THE H&H BOLIN CHEST SEAL VALVED CHEST DRESSING

Tear open the package by using the indicated tear notches remove the product. Grab the product by the large tab to keep the product sterile and follow these instructions to apply the product.



Using the provided pad, wipe away any bodily fluids from the chest wound. Holding the product at the large tab, peel the clear plastic backing away from the sticky hydrogel base.



Hold the Bolin Chest Seal over the wound and place it on the chest, centering the three valves over the wound area. Air will begin to exit through the one-way valves. Press the seal down onto the chest to ensure a complete seal.

If one of the valves becomes blocked, lift the Bolin Chest Seal and reposition it so that one of the other valves is centered over the wound.

***Continue to monitor the injured for signs of a tension pneumothorax. Follow local protocols for treatment of a tension pneumothorax when using the Bolin Chest Seal.***

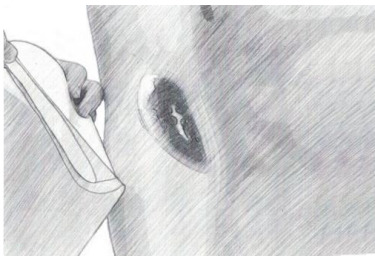
***THIS PRODUCT IS SINGLE USE ONLY. DO NOT REUSE.***

This product is a medical device that may require specific training regarding proper use. Please follow any local guidance or governing authority regarding the use of this device.

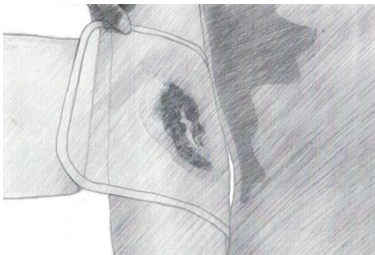


# HOW TO USE THE H&H WOUND SEAL KIT OCCLUSIVE DRESSING

Tear open the package by using one of the indicated tear notches and remove the product. Grab the product by the large tab to keep the product sterile and follow these instructions to apply the product.



Using the provided pad, wipe away any bodily fluids from the wound. Holding the product at the large tab, peel the clear plastic backing away from the sticky hydrogel base.



Hold the Wound Seal over the wound and place it on the wound, centering the seal over the wound area. You can watch and monitor the wound through the hydrogel



Smooth out the hydrogel to ensure a firm seal against the skin. If you need to adjust or move the seal, use the large tab at one end to pull the seal away from the skin.

***THIS PRODUCT IS SINGLE USE ONLY. DO NOT REUSE.***

This product is a medical device that may require specific training regarding proper use. Please follow any local guidance or governing authority regarding the use of this device.

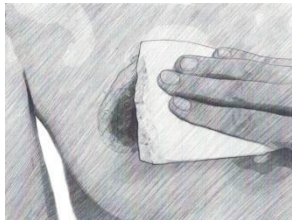




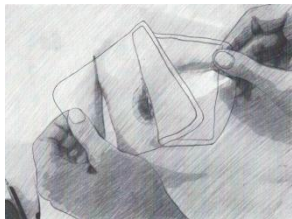
# HOW TO USE THE DUALSEAL™ CHEST SEAL TWO-PACK



Inspect the foil pouch to make sure the packaging has not been compromised. Tear open the package by using one of the indicated tear notches and remove the product (2 seals included).



Wipe the application site dry with an absorbent pad or sponge (not included) to remove any bodily fluid prior to application.



Remove the seal from the protective backing and apply to the wound with the hydrogel adhesive applied against the wound and skin.



Smooth the seal over the wound and apply pressure to form a protective seal around the wound site. Monitor the wound area until seen by medical professionals.

***THIS PRODUCT IS SINGLE USE ONLY. DO NOT REUSE.***

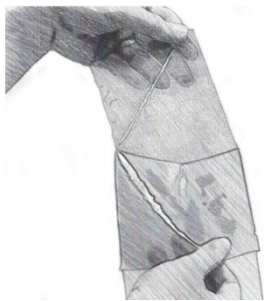
This product is a medical device that may require specific training regarding proper use. Please follow any local guidance or governing authority regarding the use of this device.

# **Other Trauma Devices**



# HOW TO USE THE H&H ClearCool™ HYDROGEL BURN DRESSING

Peel open the package by using the tab provided at the top corner of the package and remove the product. Grab the product by the large tabs at either end to keep the product sterile and follow these instructions to apply the product.



Peel back the blue backing from the clear burn dressing. Hold the dressing by the tab with the hydrogel facing towards the burn.



Apply the clear burn dressing to the burn, ensuring placement of the hydrogel over the burn area. Gently smooth out the burn dressing to ensure coverage over the burn area. The water in the hydrogel will begin soothing the burn. Continue to monitor the burn area and re-apply as needed.

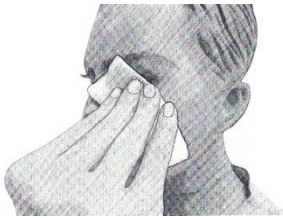
***THIS PRODUCT IS SINGLE USE ONLY. DO NOT REUSE.***

This product is a medical device that may require specific training regarding proper use. Please follow any local guidance or governing authority regarding the use of this device.

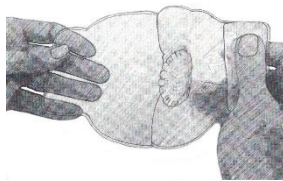


# HOW TO USE THE H&H COMBAT EYE SHIELD

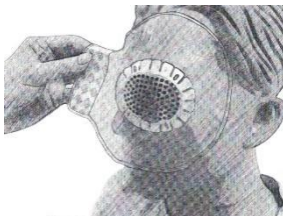
Tear open the package by using one of the indicated tear notches and remove the product from the package. Remove the eye shield from the protective wrapper.



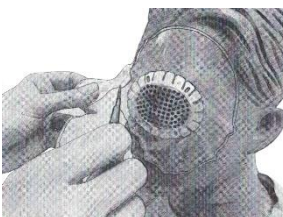
Using the included gauze, wipe around the injury site, removing bodily fluids or debris from around the eye. Do not wipe the eye itself and do not place the gauze or any item on the eye.



Peel back the clear protective sheet away from the hydrogel side of the seal. Make sure the aluminum eye shield is firmly embedded in the seal itself.



Position the eye shield directly over the injured eye and smooth the hydrogel disc onto the skin. Try to remove any wrinkles or folds in the disc to ensure a proper seal.



If the hydrogel disc is too large for the injured person's face or may block the nose or mouth, trim away the portions of the disc that may cause issues.

Frequently check the eye shield to make sure it has not moved or needs to be repositioned.

***THIS PRODUCT IS SINGLE USE ONLY. DO NOT REUSE.***

This product is a medical device that may require specific training regarding proper use. Please follow any local guidance or governing authority regarding the use of this device.