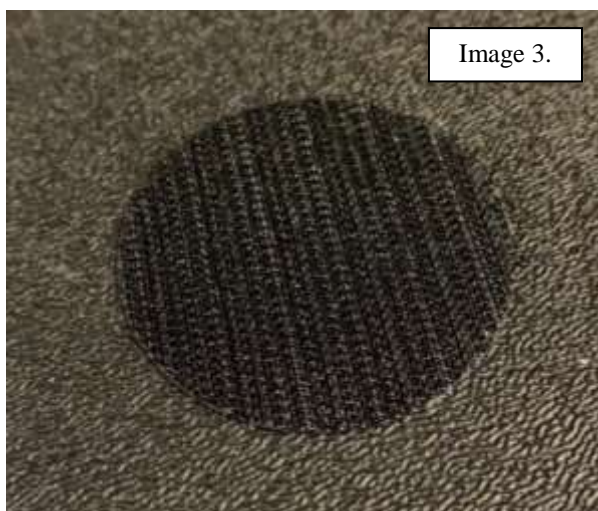


## BELMOR FLOOR LINER RETAINING CLIP INSTALLATION INSTRUCTIONS FOR TRUCKS WITH VINYL FLOORING

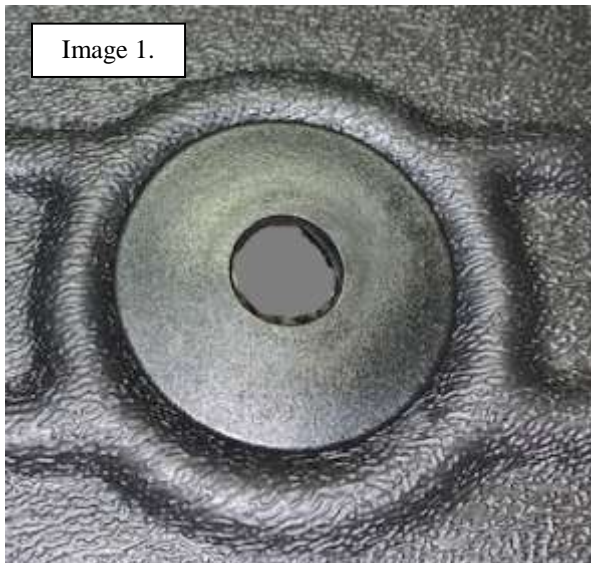
*YOUR NEW LINER SET INCLUDES OUR FLOOR LINER RETENTION CLIP SYSTEM. THESE RETAINING CLIPS SECURE THE LINERS IN PLACE WHILE KEEPING SPILLS AND DEBRIS TRAPPED INSIDE THE LINERS. TO INSTALL, SIMPLY FOLLOW THE INSTRUCTIONS BELOW:*

- 1) Clean your vinyl floors thoroughly using a degreaser product like Simple Green®.
- 2) Test fit your new Belmor Floor Liners in your vehicle. If any trimming is required to achieve the correct fit, complete the trimming needed and reinstall the liners. Refer to the installation instructions that accompanied the liners for possible trim details.
- 3) Determine the location for installation of the Velcro retention pads by using an ink pen or similar and making a mark directly through the hole in the mat clips to the flooring below (Image 1 below). When all of the locations are marked, remove the floor liners.
- 4) Using the included 3M primer pens, dampen **an approximate 2" circular** area around the marked locations (see image 2 below). The primer pens are activated by first crushing the reservoir inside; just pinch to crush. Each primer pen will be used on 2-3 locations.
- 5) Once the areas wetted with the primer pen have dried, install the Velcro retention pads, centering them on the marked and primed locations (see image 3 below).
- 6) Last, insert the included floor mat posts through the liner into the mat clip locations and then install the liners. The Velcro pads on the bottom of floor mat posts will match up to the Velcro retention pads you just installed to secure the floor liners (see image 4 below).



## BELMOR FLOOR LINER RETAINING CLIP INSTALLATION INSTRUCTIONS FOR TRUCKS WITH CARPET FLOORING

- 1) Test fit your new Belmor Floor Liners in your vehicle. If any trimming is required to achieve the correct fit, make the needed trims. Refer to the installation instructions that accompanied the liners for trim instructions.
- 2) Note that each liner in your set has floor mat clips that were installed during manufacturing (see image 1 below). The number and location of mat clips varies with each application. Insert the included mat retention post (see image 2 below) into the liners. The post top passes up through the bottom of the liner into the mat clip. (see image 2 below).
- 3) Lastly, reinstall the liners with the retention posts inserted in the mat clips and position into place. Then, using the slot in the top of the retention post and a coin, flat-blade screw driver or similar, twist the post so that the screw shank is secured into the carpet (see image 4 below).



IF YOU HAVE ANY QUESTIONS REGARDING THE INSTALLATION OF YOUR RETAINING CLIPS, PLEASE CALL 800-344-8759 MONDAY-FRIDAY 8:00 AM - 5:00 PM OR E-MAIL US AT: [contactus@huskyliners.com](mailto:contactus@huskyliners.com).