

# FlexiRoll

**Description:** High Gloss dry-erase surface  
**Weight:** 350-381 grammes per square meter

**Fire Rating:** Euro Class B  
**Health & Safety:** This product is classified as non-hazardous and therefore does not require any special handling. This product does not require special labelling.

**Handling/Storage:** Store at ambient temperatures away from heat source. Suitable lifting equipment may be required.

**Fire Fighting:** Any extinguishing media are suitable. Wear self contained breathing apparatus, protective clothing and full face mask. Fumes should be ventilated immediately due to possible liberation of noxious gases.

**Ecological:** This product is not bio-degradable. Dispose of in accordance with Local Authority regulations or via an authorised contractor.

## Ways FlexiRoll Can Be Installed

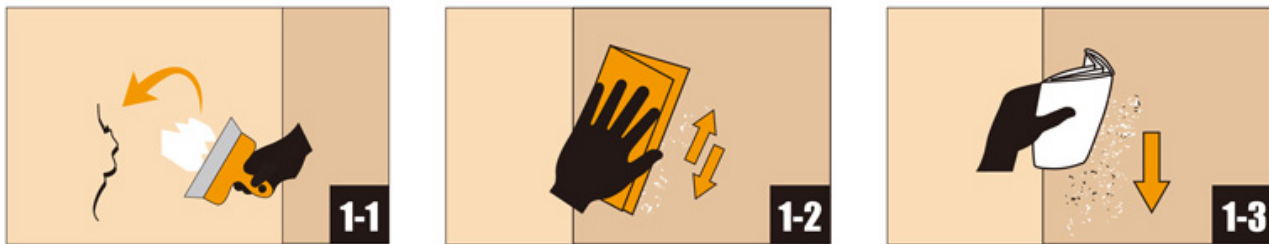


## The Following Tools Are Good To Have:



## General Guide

### 1. Preparation



- Remove all old backing paper from wall surface. Ensure hanging surface is smooth, clean, dry in depth, of a uniform colour and in a sound condition.
- Surface should be free from contaminants such as dirt, dust, grease, mildew, ink stains; etc - any of these can prevent adhesion taking place.
- Wash with detergent solution, rinse and allow to dry.
- Fill cracks and holes with a proprietary filler in accordance with the manufacturer's instructions.
- Treat any areas showing mould growth.
- Ensure floors are swept clean to avoid dirt gathering at skirting level.
- Ensure that you are installing under adequate lighting conditions.
- Site temperature should not be below 12°C (55°F). Avoid excessive heat until adhesive is fully dried

## Surfaces

### Plasterboard:

1. File all nail heads, screws, etc. And coat with light coloured oil-based metal primer. All holes should be filled and smoothed.
2. Prime surface with FlexiRoll Whiteboard Wallpaper Primer and allow to dry before hanging

### Porous surface (plaster, cement render, etc)

1. Ensure old plaster stable and free of mould.
2. Ensure new plaster dry in depth. Seal with FlexiRoll Whiteboard Wallpaper Primer

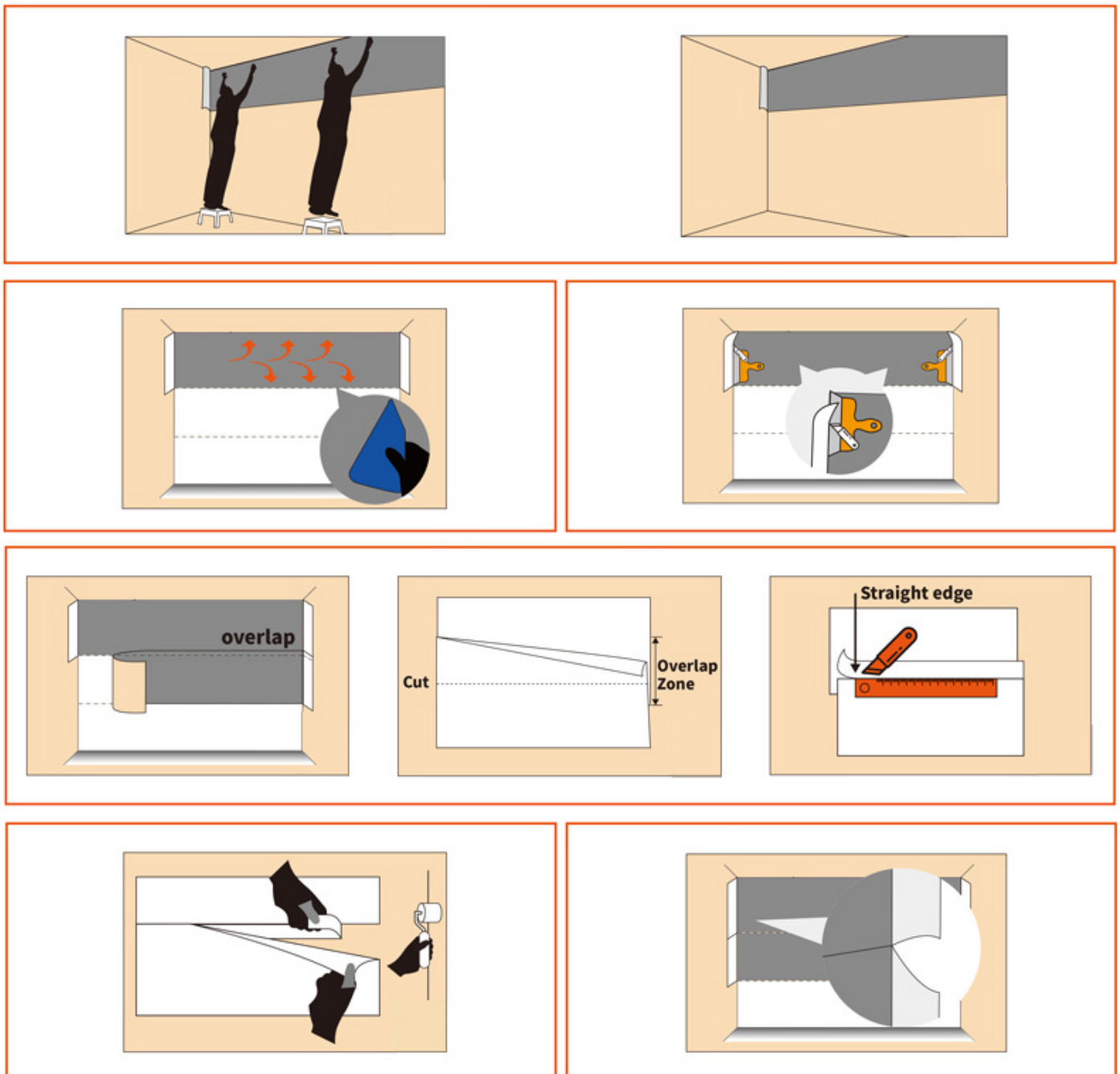
### Non-porous surface (glass, gloss paint, etc)

1. Abrade surface to provide a key. Wash and dry thoroughly.
2. Use FlexiRoll Whiteboard Wallpaper Adhesive

### Emulsion paint:

1. Abrade surface to provide a good key.
2. Wash and dry thoroughly.
3. Apply one coat of FlexiRoll Whiteboard Wallpaper Primer

## Hanging Instructions



- Cut the FlexiRoll to required length
- Pour paste into paste tray
- Paste the wall with roller
- Apply the FlexiRoll lengths edge to edge (vertically or horizontally)
- The roll edges of the FlexiRoll do not always achieve a tight edge to the edge joint when fixed to walls. To obtain a tight edge to edge joint the edges of adjacent rolls must be overlapped on the wall by approx. 10-15mm and then cut down the center of the overlap. The cut off edges should then be discarded and the roll edges joined along the new clean edge line.
- Use a soft wallpaper brush to remove bubbles and creases
- Use a straight edge and trimming knife or scissors at any corners
- Remove any excess paste with a damp sponge
- Leave to dry thoroughly (24 hrs)
- The wall is now ready to write on with dry erase pens

### **Maintenance:**

- Before Use:** Following Installation, Whiteboard wall covering should not be used until the adhesive has fully dried.  
Clean the surface thoroughly with clean water and a soft wet cloth, then dry the surface using a soft dry lint free cloth. Be sure to remove any residual adhesive that may have been left during installation.  
Ordinary dirt and smudges can be removed with a mild soap and warm water. Clean from bottom of wall upward. Rinse thoroughly with clean water from the top down using a sponge. Dry the wall covering with a soft, lint-free cloth or towel.
- Erasing:** Dry-erase markings should be removed with a soft cloth or a felt eraser for longer lasting surface effectiveness. When "dry-erasing", press firmly and evenly, using a circular motion. Be sure not to let any abrasive edge scrape the surface.  
It is essential to clean or replace erasers when they become soiled. Dirty erasers will leave excess ink on the surface and will affect the performance of the wall covering.
- Cleaning:** For best results, rinse surface thoroughly with water after cleaning. Any difficulty in erasing may be the result of a residue build-up from cleaners.  
For periodic cleaning, or as needed, rinse the surface with clean water. This may be done with a soft cloth or sponge then dry the surface using a soft dry lint free cloth.  
For removing small difficult marks, first write over the old mark with a dry erase marker to re-activate the ink and then erase.  
Do not use erasers with plastic edges, ballpoint pens or other sharp pointed writing instruments on the surface.
- Long Term:** Do not use any abrasive cleaning cloths or powdered abrasive as they will damage the surface leaving an unsightly appearance. Do not use active solvent-type cleaning preparations, such as nail polish remover etc, as they will they will damage the surface of the product. No marker-board conditioners or re-surfacing products should be used.  
To prevent dry ink smearing and insure the best performance and appearance of the material we recommend that all dry erase marks be completely removed every two weeks.