

Party Wall - Acoustic Datasheet:

ROBUST DETAIL E-WT-1

Twin timber frames with partial or no sheathing boards, min. 50mm cavity

External wall

Masonry with 50mm (min) cavity

Flexible Cavity Barrier

Encapsulated non-combustible glass mineral wool

Sheathing board

Internal wall

Fully filled with Earthwool FrameTherm Roll/Slab

Inner leaf

Gypsum based board (nominal 8kg/m²)

Insulation

Earthwool Timber Frame Party Wall Slab 60mm (min)

Partial sheathing of party wall

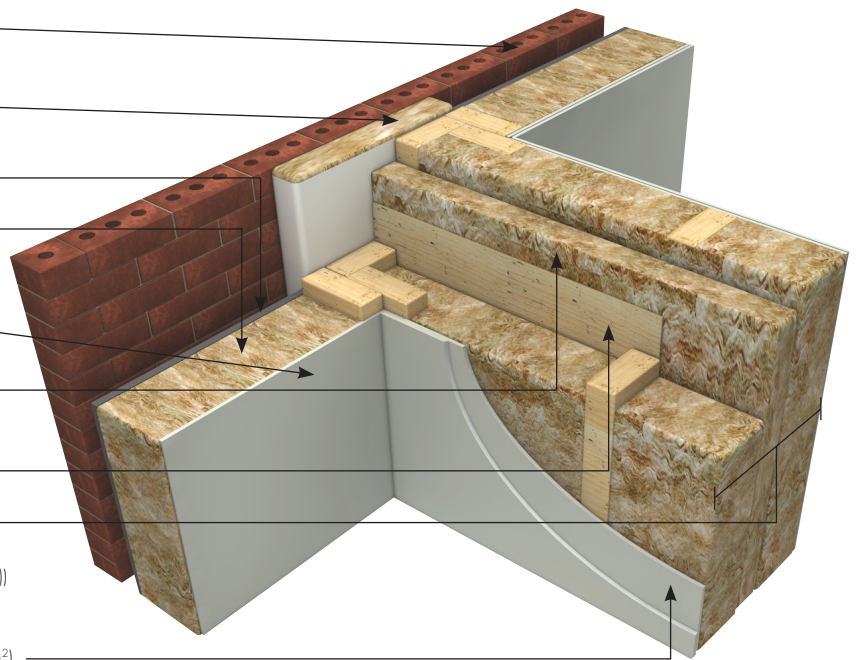
Wall width

240mm (min) between inner faces of wall linings.

50mm (min gap between frames (including sheathing if included))

Wall finish

2 or more layers of gypsum based board (total nominal 22kg/m²)



Knauf Insulation Earthwool Timber Frame Party Wall Slab

Thickness (mm)	Length (mm)	Width (mm)	Fire Performance	Generic BRE Green Guide Rating	Contributes to zero effective U-value (i)	Approved Document E (England and Wales) Acoustic performance ≥ 45 dB $D_{nT,w} + C_{tr}$	Section 5 (Scottish Technical Handbook) Acoustic performance at least 56 dB $D_{nT,w}$	Code for Sustainable Homes credits
60	1200	600	Euroclass A1	A+	Yes	Yes	Yes	1
85	1200	600	Euroclass A1	A+	Yes	Yes	Yes	1
110	1200	600	Euroclass A1	A+	Yes	Yes	Yes	1

(i) When used in conjunction with effective edge sealing

Benefits

- No requirement for pre-completion acoustic testing in this construction when using the **robustdetails**[®] scheme.
- Timber Frame Party Wall Slab when installed with a Flexible Encapsulated Mineral Wool Cavity Barrier at the perimeter of the party wall satisfies the Building Regulations definition of a Zero U-value solution for Party Wall bypass.
- Earthwool Timber Frame Party Wall Slab is easy to install and is sized to suit common timber frame construction dimensions.



The Part E Robust Details Handbook states that the separating cavity in E-WT-1 may be insulated with mineral wool with a maximum density of 60kg/m³ in the frame and 40kg/m³ in the cavity between the frames. Knauf Insulation Earthwool Timber Frame Party Wall Slab fulfils this requirement. Acoustic testing has been completed to demonstrate suitability in the above construction. If this solution were used on site with an equivalent construction and the same build quality, it would achieve the sound insulation performance level required by Approved Document E (England and Wales) and Section 5 (Scottish Technical Standards).

Knauf Insulation Ltd
PO Box 10, Stafford Road, St Helens, Merseyside WA10 3NS

For further information contact our Technical Support Team
Tel: 01744 766 666 E-mail: technical.uk@knaufinsulation.com
www.knaufinsulation.co.uk

KINE3325DAT - V1016

KNAUFINSULATION
it's time to save energy

Party Wall - Acoustic Datasheet:

ROBUST DETAIL E-WT-2™

Twin timber frames with sheathing boards, min. 50mm cavity

External wall

Masonry with 50mm (min) cavity

Earthwool Cavity Barrier

Encapsulated non-combustible glass mineral wool

Sheathing board

Internal wall

Fully filled with Earthwool FrameTherm Roll/Slab

Inner leaf

Gypsum based board (nominal 8kg/m²)

Insulation

Earthwool Timber Frame Party Wall Slab 60mm (min)

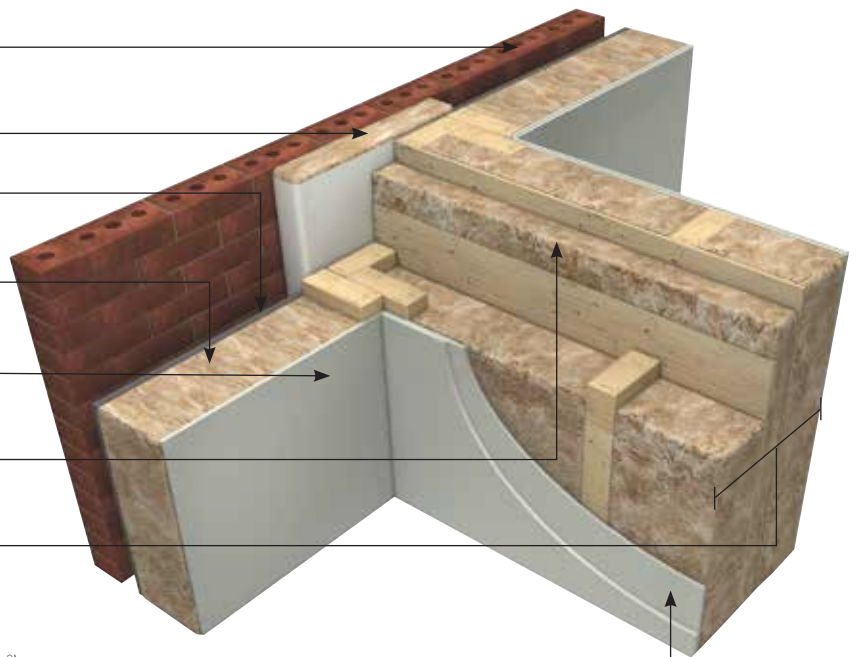
Wall width

240mm (min) between inner faces of wall linings.

50mm (min gap between wall panels)

Wall finish

2 or more layers of Gypsum based board (total nominal 22kg/m²)



Knauf Insulation Timber Frame Party Wall Slab

Thickness (mm)	Length (mm)	Width (mm)	Fire Performance	Generic BRE Green Guide Rating	Contributes to zero effective U-value (i)	Approved Document E (England and Wales) Acoustic performance in excess of 45 dB D _{nT,w}	Section 5 (Scottish Technical Handbook) Acoustic performance at least 56 dB D _{nT,w}	Code for Sustainable Homes credits
60	1200	600	Euroclass A1	A+	Yes	Yes	Yes	1
85	1200	600	Euroclass A1	A+	Yes	Yes	Yes	1
110	1200	600	Euroclass A1	A+	Yes	Yes	Yes	1

Benefits

- Provides a solution to restrict heat loss through party wall bypass
- Contributes to a zero U-value to be claimed in SAP calculations (i) as the product provides a full-fill solution
- Easy to install and is sized to suit common timber frame construction dimensions
- Performance proven by independent robust co-heating testing
- Utilises revolutionary ECOSE® Technology a bio-based formaldehyde free binder technology, based on rapidly renewable materials instead of petro based chemicals

(i) When used in conjunction with effective edge sealing



The Part E Robust Details Handbook states that the separating cavity in E-WT-2 may be insulated with mineral wool with a maximum density of 60kg/m³ - Knauf Insulation Earthwool Timber Frame Party Wall Slab fulfils this requirement. Acoustic testing has been completed to demonstrate suitability in the above construction. If this solution were used on site with an equivalent construction and the same build quality, it would achieve the sound insulation performance level required by Approved Document E (England and Wales) and Section 5 (Scottish Technical Standards).

Knauf Insulation Ltd
 PO Box 10, Stafford Road, St Helens, Merseyside WA10 3NS
 For further information contact our Technical Support Team
 Tel: 01744 766 666 E-mail: technical.uk@knaufinsulation.com
www.knaufinsulation.co.uk

KNAUFINSULATION
 it's time to save energy