

**QUICK &  
EASY TO  
INSTALL**



1

Staple to timber



2

Overlap and tape



3

Fix battens & board



**alumaflex**

# FOURTEEN LAYER MULTIFOIL INSULATION

ask your stockist for

**alumaflex**  
INSULATION

THIN & HIGHLY EFFICIENT

# IDEAL FOR ROOFS WALLS LOFTS

## AND TIMBER FRAME CONSTRUCTION



Call us on **01621 776252**  
[www.alumaflex.co.uk](http://www.alumaflex.co.uk)

TESTED BY A UKAS  
ACCREDITATION BODY

Sq Metres	Width	Length	Weight	Thickness
12	1.2 metres	10 metres	10kg	25 - 30 mm

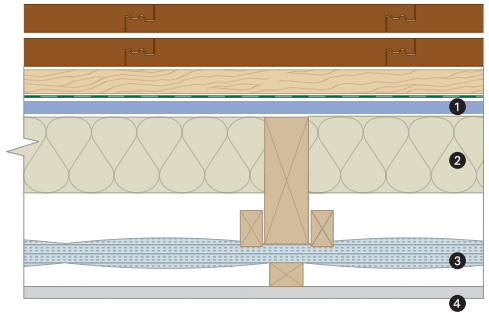
## ALUMAFLEX U-VALUE CALCULATION GUIDE



### ALUMAFLEX IN LOFTS

Description ( PIR between rafters)	U-Value
Alumaflex and 90 mm PIR	0.18 W/m <sup>2</sup> K
Alumaflex and 120 mm PIR	0.15 W/m <sup>2</sup> K
Alumaflex and 150mm PIR	0.13 W/m <sup>2</sup> K

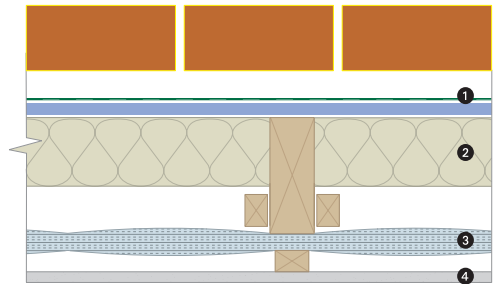
Description ( PIR between rafters)	U-Value
Alumaflex x 2 and 60 mm PIR	0.18 W/m <sup>2</sup> K
Alumaflex x 2 and 85 mm PIR	0.15 W/m <sup>2</sup> K
Alumaflex x 2 and 110mm PIR	0.13 W/m <sup>2</sup> K



### ALUMAFLEX IN WALLS

Description ( PIR between studs)	U-Value
Alumaflex and 30 mm PIR	0.28 W/m <sup>2</sup> K
Alumaflex and 70 mm PIR	0.21 W/m <sup>2</sup> K
Alumaflex and 100 mm PIR	0.18 W/m <sup>2</sup> K
Alumaflex and 150 mm PIR	0.14 W/m <sup>2</sup> K

Description ( PIR between studs)	U-Value
Alumaflex x 2	0.26 W/m <sup>2</sup> K
Alumaflex x 2 and 25 mm PIR	0.21 W/m <sup>2</sup> K
Alumaflex x 2 and 50 mm PIR	0.18 W/m <sup>2</sup> K
Alumaflex x 2 and 100 mm PIR	0.14 W/m <sup>2</sup> K



**Diagram Key**

- 1 Membrane
- 2 Insulation
- 3 Alumaflex
- 4 Plasterboard

### ALUMAFLEX IN FLOORS

P/A below	50 mm airgap above	100mm air gap above	150mm airgap above
0.2	0.22 W/m <sup>2</sup> K	0.20 W/m <sup>2</sup> K	0.19 W/m <sup>2</sup> K
0.5	0.28 W/m <sup>2</sup> K	0.25 W/m <sup>2</sup> K	0.24 W/m <sup>2</sup> K