

THERMO-LOC FR60

60-minute fire-rated cavity closer

Fire rated barriers for eliminating damp and cold bridging around doors, windows and sills

Use

- To close the cavity at external doors, window jambs and sills
- To provide thermal insulation and prevent 'cold bridging'
- To provide a DPC at external doors, window jambs or sills
- 60 minutes fire rating and minimum 15 minutes insulation
- Suitable for cavities up to 150mm
- Suitable for timber and masonry walls

Features and benefits

- Provides an effective DPC and thermal barrier between frame, inner and outer wall leaf
- Thermal conductivity of 0.036W/mK
- Exceeds the minimum thermal resistance path of 0.45m²K/W stipulated in 'Part L' accredited construction details
- Rigid profile extrusion allows both first and second fix
- Suitable for all frame and sill positions (see Fig.1)
- Durable and resistant to decay
- Insulation option to suit your requirements both thermal and fire rated
- Global warming potential of zero
- Ozone depletion potential of zero
- Available fully rebated - Check reveal (single flange)

Quality

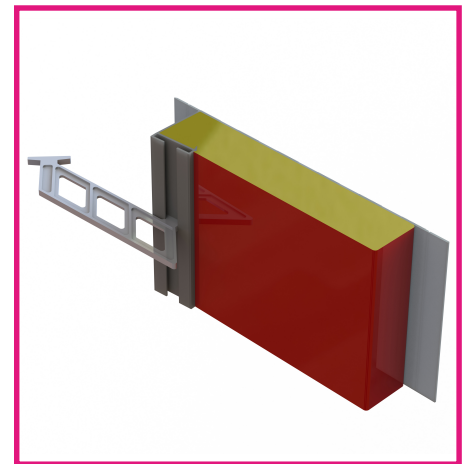
- Independently tested by Warrington Fire
- LABC Registered Detail
- Satisfies NHBC Standards
- Manufactured to BS EN ISO 9001 and BS EN ISO 14001
- Complies with Building Regulation Approved Documents C, B, L1 & L2
- Complies with 'Part L' accredited construction details
- Complies with the Scottish Building Standards 'Technical handbook'
- Satisfies BRE document 'Thermal insulation: avoiding risks'
- Meets all relevant British Standards

Material and colour choice

- Rigid profile extruded in white UPVC
- Supplied in 2.4 metre lengths
- Standard cavity options available 50mm - 150mm
- Rockfibre mineral wool (FR) insulation 0.036W/mk

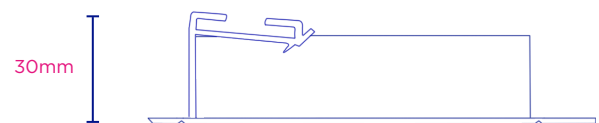
Installation advice

- Can be used in both first and second fix applications
- Cut the cavity closer into required lengths allowing the jamb section to overlap the sill section and to butt the underside of the lintel
- In first fix application the cavity barrier should be nailed to the jamb/sill of the door or window frame and the whole assembly built in as work proceeds. Alternatively the barrier can be built in sections using fixing ties as work proceeds.



Thermo-loc FR60 100mm Profile

Single Profile | 50mm - 100mm cavities



Single Profile | 105mm - 150mm cavities

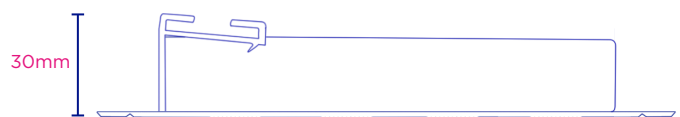
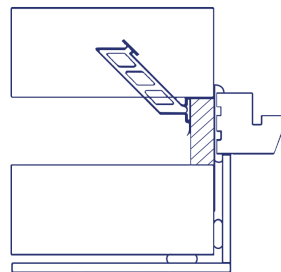
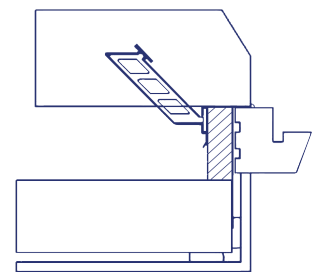


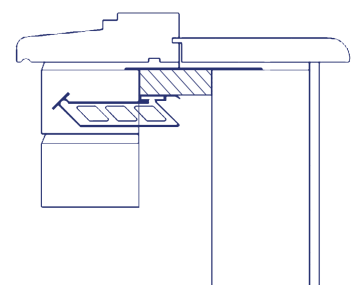
Fig.1 Flush jamb



Fully rebated Check reveal



Sill detail



Cavity barriers for fully rebated / check reveals also available

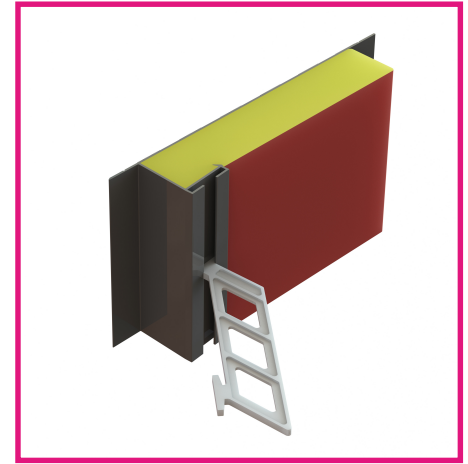
- For second fix applications, the cavity barrier is pushed into the open cavity after building work is complete. The compressible nature of the exposed insulation material is used to create a friction fit in the cavity, secure nail fixing is required.
- Joining 'off cut' sections should not be carried out for the FR range

THERMO-LOC

FR60

60-minute fire rated cavity closer

Fire rated barriers for eliminating damp and cold bridging around doors, windows and sills



Thermo-loc FR60 150mm Profile

How to order

- Establish the cavity width and select the correct cavity barrier width, or the next size up to ensure the cavity can be closed
- In jamb and sill applications, first estimate the total length of cavity barrier required, then order the correct number of individual 2.4 metre lengths so limiting joint pieces
- Fixing ties are available for secure fixing if required (particular attention around door openings). Allow for ties fitted at 450mm centres

Technical considerations

- BRE Document 'Thermal insulation: avoiding risks' and Robust Details stipulate: "When a window or door frame is set back behind the inner face of a dense outer masonry leaf, it should overlap an insulated closer by a minimum of 30mm for BRE exposure zones Sheltered to Severe; but fully rebated (check reveals for zones Very Severe" (see Fig.2)
- With reference to insulation, the products in this range do not use, contain or produce Urea Formaldehyde, CFC's or indeed any of the so called soft CFC's, ie. HCFC's & HFA's. They conform to the Montreal Protocol and have an ozone depletion potential of zero and global warming potential of zero.

Product codes

Thermo-loc 60-minute fire-rated cavity barriers

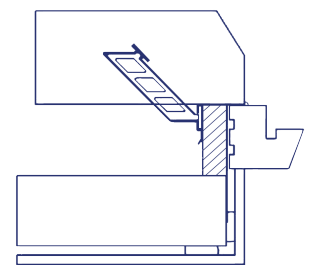
Product code	Description	Cavity width	Length	Pack quantity	Lead time
FR60/50	Thermo-loc FR60	50mm	2.4m	5	Next working day
FR60/65	Thermo-loc FR60	65mm	2.4m	5	7-10 working days
FR60/75	Thermo-loc FR60	75mm	2.4m	5	7-10 working days
FR60/90	Thermo-loc FR60	90mm	2.4m	5	7-10 working days
FR60/100	Thermo-loc FR60	100mm	2.4m	5	Next working day
FR60/125	Thermo-loc FR60	125mm	2.4m	5	Next working day
FR60/150	Thermo-loc FR60	150mm	2.4m	5	Next working day
FR60/CR50	Thermo-loc FR60 CR	50mm	2.4m	5	7-10 working days
FR60/CR65	Thermo-loc FR60 CR	65mm	2.4m	5	7-10 working days
FR60/CR75	Thermo-loc FR60 CR	75mm	2.4m	5	7-10 working days
FR60/CR90	Thermo-loc FR60 CR	90mm	2.4m	5	7-10 working days
FR60/CR100	Thermo-loc FR60 CR	100mm	2.4m	5	7-10 working days
FR60/CR125	Thermo-loc FR60 CR	125mm	2.4m	5	7-10 working days
FR60/CR150	Thermo-loc FR60 CR	150mm	2.4m	5	7-10 working days
CCFIX	Fixing ties - 100 pack	-	-	100	Next working day

NB. Non standard cavity size to special order



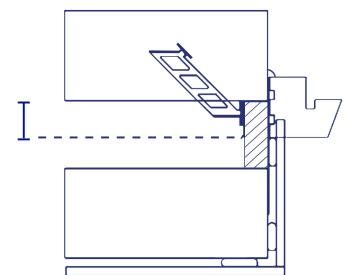
Timloc Building Products, Timloc House, Ozone Park, Howden, East Yorkshire, DN14 7SD
 T: 01405 765 567 E: sales@timloc.co.uk W: www.timloc.co.uk Technical | E: technical@timloc.co.uk

Fig. 2 Fully rebated (check reveal)



Staggered jamb

At least 30mm overlap to window frame



Bill of quantity

F30 Accessories/sundry items for brick/block/stone walling
 Clause

180 | CAVITY CLOSURES FOR CLOSING AROUND WINDOW & DOOR OPENINGS

- To extend not less than 150mm beyond ends of lintels/bridgings.
- Manufacturer: Timloc Building Products, Timloc House, Ozone Park, Howden, East Yorks. DN14 7SD. T: 01405 765 567, W: www.timloc.co.uk
- Reference:.....eg. FR60/50 (Thermo-loc FR60, 2.4m, 50mm cavity)
- Accessories: Fixing ties available, 6 No. per 2.4m cavity barrier.