

CUSTOMER COPY



FLARE™ WINDSHIELD FOR H-D ROAD GLIDE



EMAIL:
info@getklocked.com



CALL:
(605) 996-3700

FOR 2015+ FLTR



1. Loosen, but do not remove, the four windshield mounting screws and gently remove your windshield

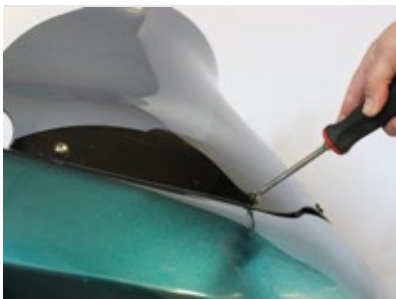


2. Ensure the washers on each mounting screw are out toward the head of the screws



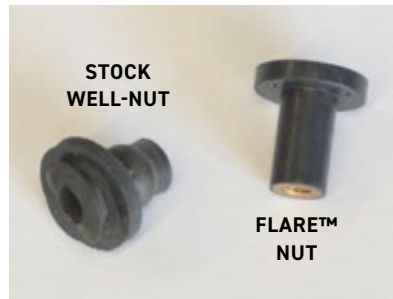
3. Install your new Flare™ Windshield onto the mounting screws. Torque the two center screws first, then the two outer screws.

FOR 98-13 FLTR



1. Remove all five windshield fasteners and remove your windshield

NOTE Reinstallation of the stock weather stripping is not required



2. Check the well-nuts in the fairing, if they are damaged or broken, Klock Werks offers a replacement kit (part number 2404-0548) for \$29.95



3. Starting with the center screw, install your new Flare™ Windshield and torque to factory specifications.

WARNING! Using Loctite® or any type of thread locker on hardware will result in breakdown of the Polycarbonate and cause cracking.

Klock Werks cannot be held responsible for any damage resulting from improper installation performed by any consumer or their dealer.

U.S. Pat. No. D586,274; D632,235; D586,275; D633,017; D626,046; D633,018 Pat. 001050165-0001, 001050165-0002, 001050165-0003 APO No. 324093, 324094, 325192

KLOCK WERKS // GETKLOCKED.COM