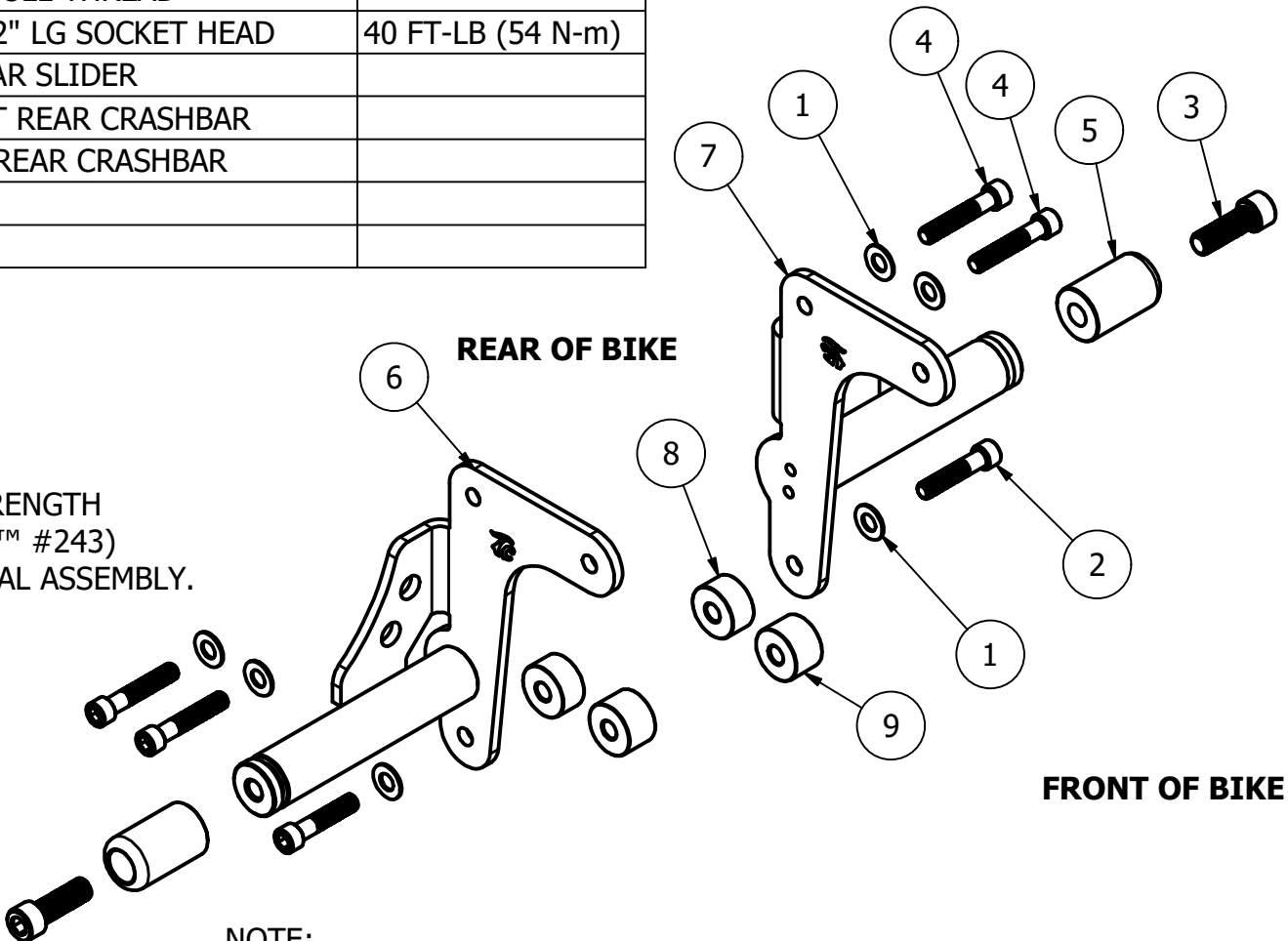


PARTS LIST				
ITEM	QTY	PART NUMBER	DESCRIPTION	TORQUE VALUE
1	6	119-0026	3/8 SAE WASHER	
2	2	119-0174	3/8-16 x 1-3/4" LG SOCKET HEAD	40 FT-LB (54 N-m)
3	2	119-0358	1/2-13 x 1.50" SOCKET HEAD CAP SCREW, FULL THREAD	25 FT-LB (34 N-m)
4	4	119-0481	3/8-16 x 2" LG SOCKET HEAD	40 FT-LB (54 N-m)
5	2	MB248BT	CRASH BAR SLIDER	
6	1	MB262M8	M8 RIGHT REAR CRASHBAR	
7	1	MB263M8	M8 LEFT REAR CRASHBAR	
8	2	MB267M8	SPACER	
9	2	MB268M8	SPACER	

TC BROS.® PART# **103-0019**

**SOFTAIL REAR CRASHBAR
MODEL YEAR 2018 & NEWER**



WARNING: APPLY MEDIUM STRENGTH THREADLOCKER (BLUE LOCTITE™ #243) TO ALL FASTENERS DURING FINAL ASSEMBLY.

TC BROS.
www.tcbros.com
419-265-9399

PAGE 1 OF 3

08NOV2023

NOTE:
LIGHTLY TIGHTEN UPPER SCREWS (119-0481) ON EACH CRASHBAR BRACKET. CHECK GAP ON LOWER BRACKET AND PLACE **BEST FITTING SPACER**, MB267M8 OR MB268M8, BEFORE FULLY TIGHTENING ALL SCREWS.

NOTE:

1. LEFT SIDE & RIGHT SIDE IS REFERENCED AS IF THE OPERATOR IS SEATED ON THE MOTORCYCLE
2. REMOVE SADDLEBAGS, IF EQUIPPED, FOR MORE WORK AREA AND TO PREVENT POSSIBLE DAMAGE TO SADDLEBAGS
3. REMOVE FACTORY PASSENGER PEG MOUNTS IF EQUIPPED.
4. **WARNING:** INSTALL CRASHBARS ONE SIDE AT A TIME. IF MOUNTING SCREWS FOR REAR FENDER MOUNTS ARE REMOVED ON BOTH SIDES, THERE IS A RISK THE REAR FENDER CAN FALL FROM MOUNTING POINTS.

INSTALLATION INSTRUCTIONS:

LEFT SIDE:

1. REMOVE REAR FENDER MOUNT SCREWS AND PLASTIC PLUG IN LOWER HOLE ON FRAME. SEE FIG. 1 FOR LOCATIONS. USE 3/8-16 TAP TO CHASE ALL HOLES TO REMOVE RUST AND RESIDUAL THREADLOCKER. CHASING HOLES WILL IMPROVE THREADLOCKER ADHESION IN UPCOMING STEPS.
2. APPLY THREADLOCKER TO 2 SCREWS, 119-0481. POSITION LEFT CRASHBAR BRACKET, MB263M8, ON FRAME. THREAD SCREWS WITH WASHERS, 119-0026, INTO UPPER HOLES NOTED IN FIG 2. HAND TIGHTEN SCREWS UNTIL CRASHBAR BRACKET IS IN CONTACT WITH FENDER MOUNTING SUPPORTS.
3. TWO SPACERS, DIFFERENT THICKNESSES, MB267M8 & MB268M8, ARE PROVIDED FOR DIFFERENT MODELS. PLACE CORRECT SPACER BETWEEN CRASHBAR BRACKET AND FRAME. APPLY THREADLOCKER TO SCREW, 119-0174. THREAD SCREW WITH WASHER, 119-0026, INTO LOWER HOLE NOTED IN FIG 2.
4. TORQUE ALL 3 SCREWS TO TORQUE VALUE ON PAGE 1.
5. APPLY THREADLOCKER TO SCREW, 119-0358, AND INSTALL SLIDER, MB248BT. TORQUE TO VALUE ON PAGE 1.



FIG 1

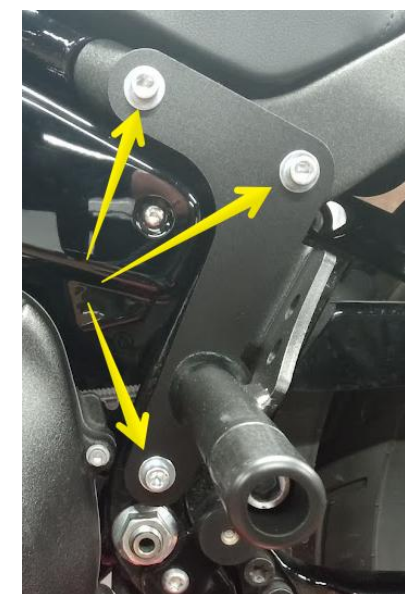


FIG 2

TC BROS.
www.tcbros.com
419-265-9399

RIGHT SIDE:

1. REMOVE MUFFLERS. REMOVE FRONT AND REAR PIPE CLAMP NUTS TO ALLOW PIPES TO MOVE FREELY. REST PIPES ON MID CONTROL FOOTPEG BRACKETS.
2. REMOVE REAR FENDER MOUNT SCREWS AND PLASTIC PLUG IN LOWER HOLE ON FRAME. SEE FIG. 3 FOR LOCATIONS. USE 3/8-16 TAP TO CHASE ALL HOLES TO REMOVE RUST AND RESIDUAL THREADLOCKER. CHASING HOLES WILL IMPROVE THREADLOCKER ADHESION IN UPCOMING STEPS.
3. APPLY THREADLOCKER TO 2 SCREWS, 119-0481. POSITION RIGHT CRASHBAR BRACKET, MB262M8, ON FRAME. THREAD SCREWS WITH WASHERS, 119-0026, INTO UPPER HOLES NOTED IN FIG 2. HAND TIGHTEN SCREWS UNTIL CRASHBAR BRACKET IS IN CONTACT WITH FENDER MOUNTING SUPPORTS.
4. TWO SPACERS, DIFFERENT THICKNESSES, MB267M8 & MB268M8, ARE PROVIDED FOR DIFFERENT MODELS. PLACE CORRECT SPACER BETWEEN CRASHBAR BRACKET AND FRAME. APPLY THREADLOCKER TO SCREW, 119-0174. THREAD SCREW WITH WASHER, 119-0026, INTO LOWER HOLE NOTED IN FIG 4.
5. TORQUE ALL 3 SCREWS TO TORQUE TO VALUE ON PAGE 1.
6. APPLY THREADLOCKER TO SCREW, 119-0358, AND INSTALL SLIDER, MB248BT. TORQUE VALUE ON PAGE 1.
7. REINSTALL EXHAUST AND TORQUE ALL HARDWARE TO PROPER FACTORY TORQUE VALUES.

TC BROS.
www.tcbros.com
419-265-9399



FIG 3

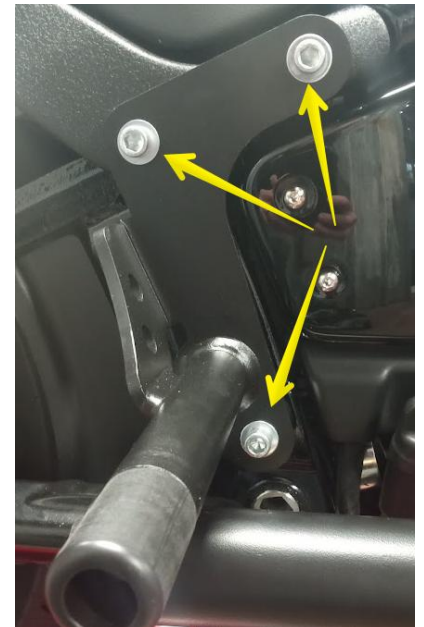


FIG 4