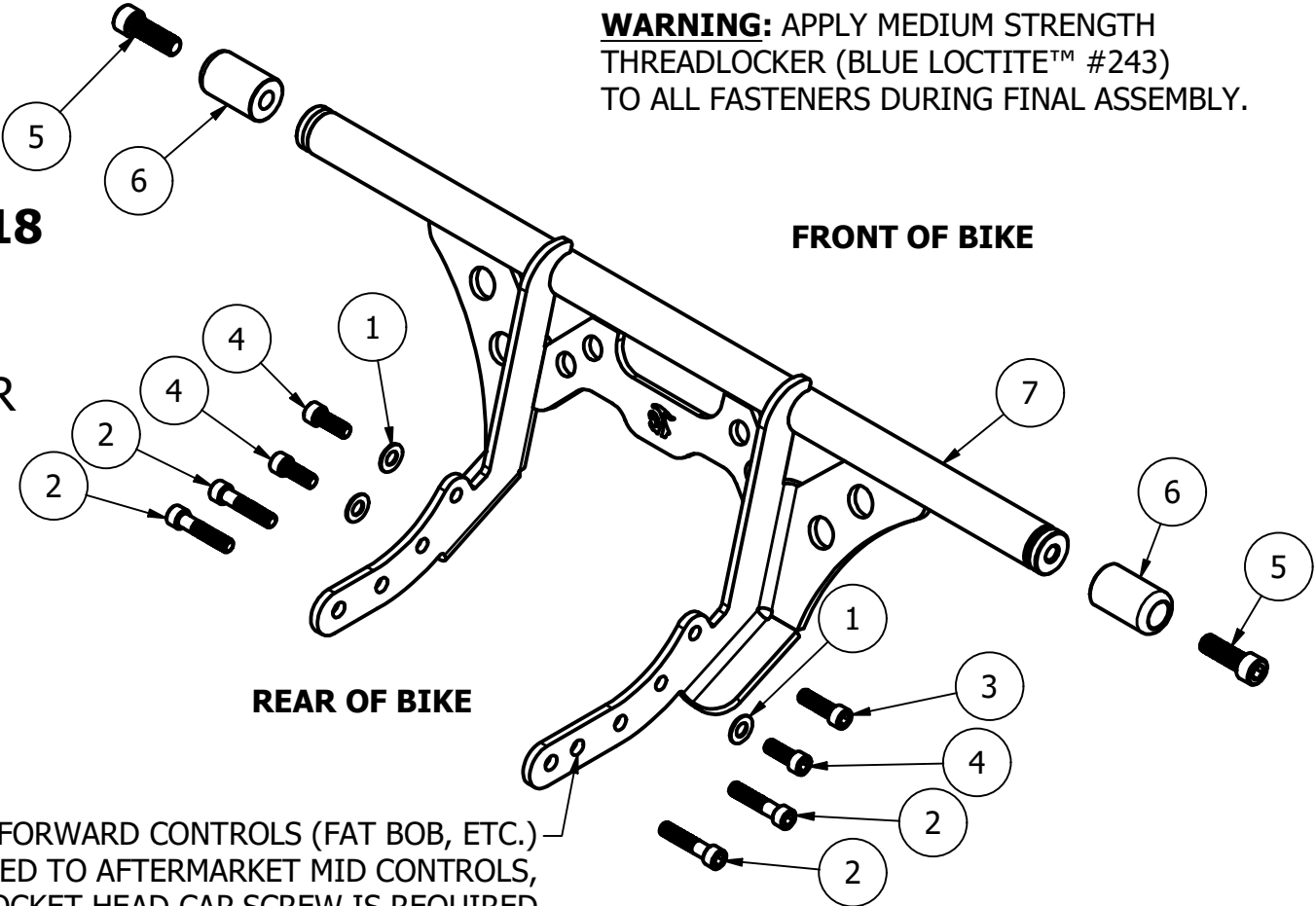


WARNING: APPLY MEDIUM STRENGTH
 THREADLOCKER (BLUE LOCTITE™ #243)
 TO ALL FASTENERS DURING FINAL ASSEMBLY.

TC BROS.® PART# **103-0018**

SOFTAIL FRONT CRASHBAR
 MODEL YEAR 2018 & NEWER



IF USING ON A MODEL THAT HAD OEM FORWARD CONTROLS (FAT BOB, ETC.)
 AND HAS BEEN CONVERTED TO AFTERMARKET MID CONTROLS,
 ADDITIONAL 3/8-16 X 1-1/4" LG SOCKET HEAD CAP SCREW IS REQUIRED
 IN THIS LOCATION (NOT INCLUDED IN KIT)

PARTS LIST				
ITEM	QTY	PART NUMBER	DESCRIPTION	TORQUE VALUE
1	3	119-0026	3/8 SAE WASHER	
2	4	119-0174	3/8-16 x 1-3/4" LG SOCKET HEAD	40 FT-LB (54 N-m)
3	1	119-0187	3/8-16 x1-1/4 SOCKET HEAD CAP SCREW	40 FT-LB (54 N-m)
4	3	119-0293	3/8"-16x1.00" SOCKET HEAD CAP SCREW	40 FT-LB (54 N-m)
5	2	119-0358	1/2-13 x 1.50" SOCKET HEAD CAP SCREW, FULL THREAD	25 FT-LB (34 N-m)
6	2	MB248BT	CRASH BAR SLIDER	
7	1	MB261M8	SOFTAIL FRONT CRASH BAR	

TC BROS.
 www.tcbros.com
 419-265-9399

PAGE 1 OF 2

08NOV2023

1. REMOVE OEM FOOT PEG MOUNTING BRACKETS ON BOTH SIDES. REMOVE MASTER CYLINDER/BRAKE PEDAL BRACKET ON RIGHT SIDE, MASTER CYLINDER CAN REMAINED ATTACHED TO BRACKET. CAREFULLY LET MASTER CYLINDER HANG FROM BRAKE LINE AND WIRING.
2. REMOVE HOLE PLUGS ON FRAME EXPOSING THREADED HOLES. USE 3/8-16 TAP TO CHASE ALL HOLES TO REMOVE RUST AND RESIDUAL THREADLOCKER. CHASING HOLES WILL IMPROVE THREADLOCKER ADHESION IN UPCOMING STEPS.
3. APPLY THREADLOCKER TO 2 SCREWS, 119-0293. POSITION CRASHBAR ON FRAME. ON LEFT SIDE, THREAD SCREWS W/ WASHERS, 119-0026, INTO HOLES NOTED IN FIG 1. HAND TIGHTEN.
4. APPLY THREADLOCKER TO SCREW, 119-0293. ON RIGHT SIDE, THREAD SCREW W/ WASHER, 119-0026, INTO HOLE NOTED IN FIG 2. HAND TIGHTEN.
5. APPLY THREADLOCKER TO SCREW, 119-0187. ON RIGHT SIDE, POSITION MASTER CYLINDER/BRAKE PEDAL BRACKET. THREAD INTO FRONT TOP HOLE NOTED IN FIG 3. HAND TIGHTEN. VERIFY BRAKE LINE AND WIRING IS NOT PINCHED BEHIND BRACKET.
6. APPLY THREADLOCKER TO 2 SCREWS, 119-0174. ON RIGHT SIDE, POSITION FOOT PEG MOUNT BRACKET. THREAD INTO LOWER, LEFT HOLES NOTED IN FIG 3. HAND TIGHTEN.
7. APPLY THREADLOCKER TO 2 SCREWS, 119-0174. ON LEFT SIDE, POSITION FOOT PEG MOUNT BRACKET. THREAD INTO HOLES NOTED IN FIG 4. HAND TIGHTEN.
8. TORQUE ALL 8 SCREWS TO TORQUE VALUE ON PAGE 1.
9. APPLY THREADLOCKER TO SCREW, 119-0358, AND INSTALL SLIDER, MB248BT. TORQUE TO VALUE ON PAGE 1.

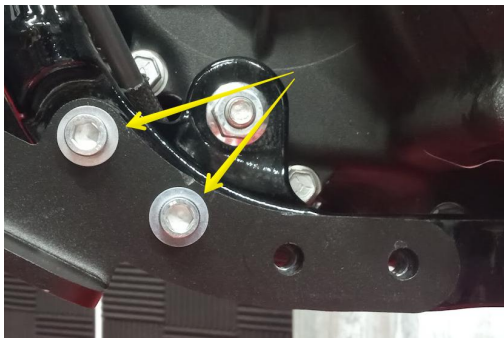


FIG 1



FIG 2

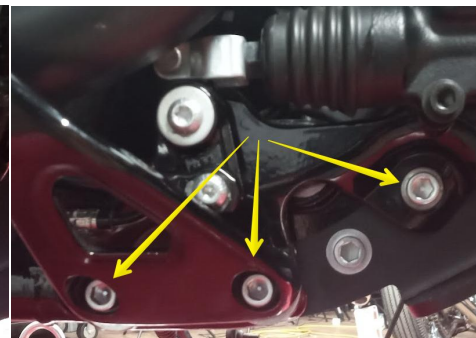


FIG 3

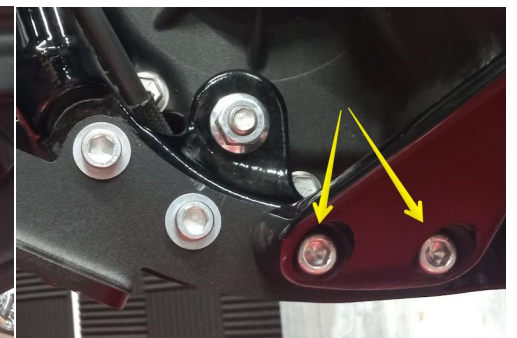


FIG 4